



A global  
university



UNIVERSITY  
OF WOLLONGONG  
AUSTRALIA

Stands  
for purpose



# Who we are

---

As the world changes, people, businesses and industry are becoming more globally connected than ever before.

At UOW, we have recognised this and are proud to be among the best modern universities in the world.





# Awards and rankings

## **EQUAL FIRST UNIVERSITY IN AUSTRALIA**

UOW was rated Australia's leading public university for student experience in the 2018 Good Universities Guide, and highest ranked university in NSW in Quality Indicators for Learning and Teaching (QILT) 2018.

---

## **5 STARS**

UOW is one of only two Australian universities- and the only publicly funded university- to achieve 5 stars in all student experience measures: overall experience, skills development, student support, teaching quality and learning resources and learner engagement<sup>1</sup>

---

## **TOP 2%**

of universities in the world<sup>2</sup>

---

## **FINALIST**

2017 The Global Teaching Excellence Awards (GTEA), recognising teaching excellence.

---

## **138,765**

graduates working in 149 countries

---

## **HIGHEST RANKED**

Best university in NSW/ACT in 7 study areas<sup>3</sup>

---

## **17th**

best modern university in the world<sup>4</sup>

---

## **TOP 1%**

for graduates as rated by global employers<sup>5</sup>

---

## **WORLD CLASS RESEARCH**

98% of UOW disciplines above world standard

---

<sup>1</sup> 2018 Good Universities Guide <sup>2</sup> QS World University Rankings 2018 <sup>3</sup> Quality Indicators for Learning and Teaching (QILT) 2018 <sup>4</sup> QS Top 50 under 50 Rankings 2018 <sup>5</sup> 2018 QS Graduate Employability Rankings

## Student statistics

UOW's students and graduates can be found in 149 countries, laying the foundation for collaborative learning at a local and international level.

This network ultimately allows our students to discover new ways of learning and thinking to help solve some of the world's most complex problems.



**34,144**

2016 total student enrolment



**26,587**  
In Australia



**7,557**  
International  
teaching  
locations

### SECTOR-WIDE SURVEYS



**84.5%**  
Undergraduate  
Course Satisfaction  
(CEQ) - compared  
to national average  
of 80.6%

**65.7%**  
Undergraduate  
Good Teaching  
Scale (CEQ) -  
compared to  
national average  
of 62.7%

The Course Experience Questionnaire (CEQ) is a survey within the Australian Graduate Survey (AGS) of all University graduates, and is conducted by Graduate Careers Australia (GCA). More info: [graduatecareers.com.au](http://graduatecareers.com.au)

## STUDENT MIX

### DOMESTIC INTERNATIONAL



7,519 International teaching locations

6,934 In Australia

### GENDER

17,102 Male

17,035 Female

\* Includes domestic students studying at offshore campuses

## ENROLMENTS



24,012 Undergraduate

7,235 Postgraduate coursework

1,695 Higher degree research

1,202 Non-award

## SOCIAL INCLUSION/PARTICIPATION RATE



18.56% Students of low socio-economic status

30.2% Students from regional and remote areas

2.04% Students identifying as Aboriginal or Torres Strait Islander

## UOW ALUMNI



138,765 Cumulative number of alumni

179 Different countries that our alumni originate from

149 Different countries that are home to our alumni

## GLOBAL REACH

### INTERNATIONAL ENROLMENTS BY REGION

|                            |       |
|----------------------------|-------|
| Americas                   | 546   |
| North Africa & Middle East | 1,880 |
| North East Asia            | 3,307 |
| North West Europe          | 385   |
| Oceania & Antarctica       | 42    |
| South East Asia            | 3,768 |
| Southern & Central Asia    | 3,963 |
| Southern & Eastern Europe  | 205   |
| Sub-Saharan Africa         | 357   |

## STUDENT MOBILITY



685 Domestic students participated in outbound studies in 2017

240 Study Abroad and Student Exchange university partnerships in 44 countries

7,200 UOW students have studied overseas on exchange programs

718 International students participated in semester studies or visiting research programs at UOW in 2017

12,759 Study abroad and exchange students have come from another university to study at UOW

## INTERNATIONAL RESEARCH LINKS



1569 Academic and research collaborations globally (including joint research grants, publications and funding)

# From Wollongong to the world

**1975**

UOW incorporated by NSW parliament as an independent institution

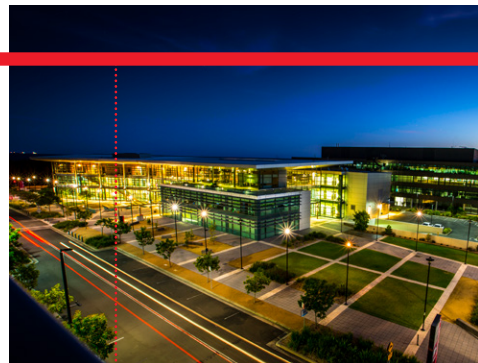
**2005**

UOW established in Singapore



**1993**

UOW established in Dubai



**1951**

Established as a Division of the then NSW University of Technology (University of NSW)



**2008**

UOW opened the first building at Wollongong Innovation Campus (iC)





## 2010

Opening of the \$30 million Illawarra Health and Medical Research Institute and the \$20 million building housing the Sydney Business School and the UOW/TAFE Digital Media Centre at Innovation Campus

## 2016

UOW establishes teaching locations in Hong Kong & China



## 2018

Construction begins on Molecular Horizons - a Molecular and life sciences research centre located at UOW's Wollongong Campus



## 2011

UOW established in Malaysia

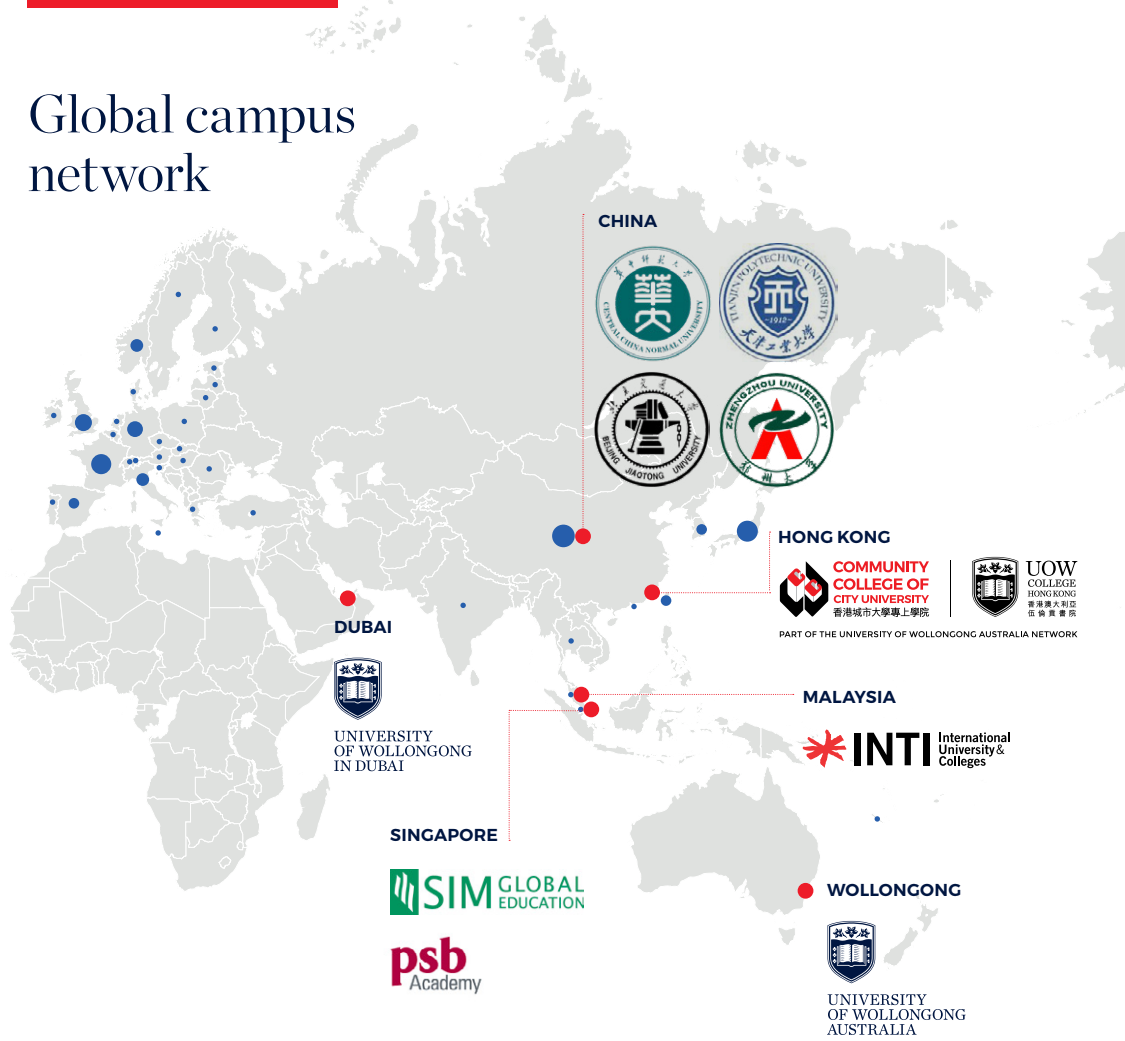


## 2017

South Western Sydney Campus established in Liverpool – UOW's 9th Australian campus

# Global campus network

A GLOBAL UNIVERSITY







- UOW global presence**  
UOW campuses & teaching locations
- UOW global exchange partners**  
(size indicates number of partners)

## A LAUNCH PAD TO THE WORLD

Our students, graduates, academics and researchers study, work and collaborate right across the world.

It's this global network that has UOW advancing social, environmental and economic development on an international scale.

The University of Wollongong is a truly global educator, delivering undergraduate and postgraduate programs at teaching sites in Australia and at overseas campuses in Asia and the Middle East, with connections to over 200 universities in 44 countries.

Our student body comprises more than 170 nationalities, in multi-cultural community settings that provide global insights and perspectives.

UOW students have access to state-of-the-art facilities, comprehensive support and highly qualified academics from around the world. Our wide global presence means that we are able to provide diverse mobility opportunities for our students. This consistently ensures exceptional student satisfaction and graduate outcomes.

# Learning and the student experience

A GLOBAL UNIVERSITY

From the inner city to the coast and out to the country, all of UOW's nine domestic locations have one thing in common: a five-star educational experience.

UOW was rated Australia's leading public university for student experience in the 2018 Good Universities Guide.

This is why our students are among the happiest and the most satisfied.



 **27°C**  
average max summer  
temperature (80.6°F)

 **22°C**  
average annual  
temperature (71.6°F)

 **83km**  
drive to Sydney (53 miles)



# Wollongong: an environment of success

As a city nestled between the mountains and the sea, the wider Wollongong region offers a range of cultural, sporting and recreational outlets. It is a region rich in industry, providing greater opportunities for work experience and employment. Wollongong is Australia's 9th largest city and just over 1 hour's drive from Sydney.

## CULTURE

- Illawarra Performing Arts Centre
- Wollongong City Art Gallery
- WIN Sports and Entertainment Centre
- Coastal cycleway/ walking track from Wollongong to Thirroul (13km)
- Science Centre and Planetarium (UOW)
- Skydive the Beach
- Sri Venkateswara Hindu Temple

## ATTRACTIONS

- 17 patrolled beaches
- Nan Tien Temple (largest Buddhist temple in the Southern Hemisphere)
- Botanic Gardens
- Sea Cliff Bridge/ Grand Pacific Drive
- The Blue Mile Foreshore Precinct
- Illawarra escarpment bushwalks

## KEY INDUSTRIES

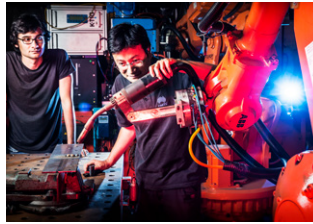
- Education
- Manufacturing
- Health Services
- Port
- Tourism
- Mining
- Retailing
- Professional Services
- Technology

# Faculties and Schools



## **FACULTY OF BUSINESS**

- Sydney Business School
- Accounting, Economics and Finance
- Management, Operations and Marketing



## **ENGINEERING AND INFORMATION SCIENCES**

- Civil, Mining and Environmental Engineering
- Computing and Information Technology
- Electrical, Computer and Telecommunications Engineering
- Mathematics and Applied statistics
- Mechanical, Materials, Mechatronic and Biomedical Engineering
- Physics



## **FACULTY OF SOCIAL SCIENCES**

- Education
- Psychology
- Health and Society
- Geography and Sustainable Communities



## STAFF MIX

|                                       | FTE          | HEAD-COUNT   |
|---------------------------------------|--------------|--------------|
| Academic staff                        | 977          | 1,058        |
| Professional Services staff           | 1,199        | 1,315        |
| <b>Total (excluding Casual staff)</b> | <b>2,176</b> | <b>2,373</b> |
| Casual staff                          | 447          |              |



## 340

Degrees offered onshore and offshore



## LAW, HUMANITIES AND THE ARTS

- The Arts, English and Media
- Humanities and Social Inquiry
- Law



## SCIENCE, MEDICINE AND HEALTH

- Biological Sciences
- Chemistry
- Earth and Environmental Sciences
- Medicine
- Nursing



## ENTITIES

- Australian Institute for Innovative Materials
- Illawarra Health and Medical Research Institute
- Early Start
- Smart Infrastructure Facility
- Sustainable Buildings Research Centre

# Wollongong Campus

UOW's Wollongong campus is one of the most picturesque university campuses in Australia. The campus is located at the base of Mount Keira, a few kilometres north-west of Wollongong CBD, and is used by 24,000 students and more than 2000 staff.

Facilities include extensive teaching, research and administration buildings, student residences, library, conference rooms, food halls, cafes, supermarket, restaurant and bar, retail outlets, indoor sports centres and gymnasium, Olympic-standard swimming pool and sports fields.

Prominent buildings include the:

- SMART Infrastructure Facility - an International leader in applied infrastructure research  
[smart.uow.edu.au](http://smart.uow.edu.au)
- Illawarra Health & Medical Research Institute which provides facilities to 600 affiliated researchers and students  
[ihmri.uow.edu.au](http://ihmri.uow.edu.au)
- Early Start Facility, that includes an Australia-first \$7 million Discovery Space  
[earlystart.uow.edu.au](http://earlystart.uow.edu.au)

- Molecular Horizons, a world-leading \$80 million molecular and life sciences research centre  
[smah.uow.edu.au/cmmb](http://smah.uow.edu.au/cmmb)
- Sciences Teaching Facility is one of the latest in networked wireless microscope technology from renowned scientific technology supplier Leica





## Innovation Campus (iC)

UOW's Innovation Campus (iC) is an award-winning research, development and business precinct established in Wollongong 10 years ago.

The 33 hectare site is a centre of Australian innovation and research excellence, home to a number of our leading research institutes. It is also home to some of the most advanced infrastructure in the nation.

Organisations from around the world co-locate at the campus with UOW's leading research institutes, including:

- Intelligent Polymer Research Institute (IPRI)
- The Australian Research Council Centre for Excellence for Electromaterials Science (ACES)

- Institute for Superconducting and Electronic Materials (ISEM)
- University of Wollongong Electron Microscopy Centre (EMC)
- Sustainable Buildings Research Centre (SBRC)
- Australian National Centre for Ocean Resources and Security (ANCORS)
- iAccelerate business incubator (iC)
- Science Space

[innovationcampus.com.au](http://innovationcampus.com.au)

LEARNING AND STUDENT  
EXPERIENCES







# UOW Sydney Business School

- Located in the heart of Sydney's financial district, overlooking Sydney Harbour
- Award-winning business courses
- Strong links with industry, business and government
- UOW Business and Management graduate outcomes received five stars rating in the 2018 Good Universities Guide

[sydneybusinessschool.edu.au](http://sydneybusinessschool.edu.au)

## Other campuses

Bega

[bega.uow.edu.au](http://bega.uow.edu.au)

Batemans Bay

[bbay.uow.edu.au](http://bbay.uow.edu.au)

Shoalhaven

[shoalhaven.uow.edu.au](http://shoalhaven.uow.edu.au)

Southern Highlands

[highlands.uow.edu.au](http://highlands.uow.edu.au)

South Western Sydney

[southwesternsydney.uow.edu.au](http://southwesternsydney.uow.edu.au)

Southern Sydney

[ssydney.uow.edu.au](http://ssydney.uow.edu.au)



# World-class research

---

Our research has placed us in the Top 1% of universities worldwide for research quality.

**77**

Startup companies supported in iAccelerate (UOW's innovation ecosystem accelerator)

---

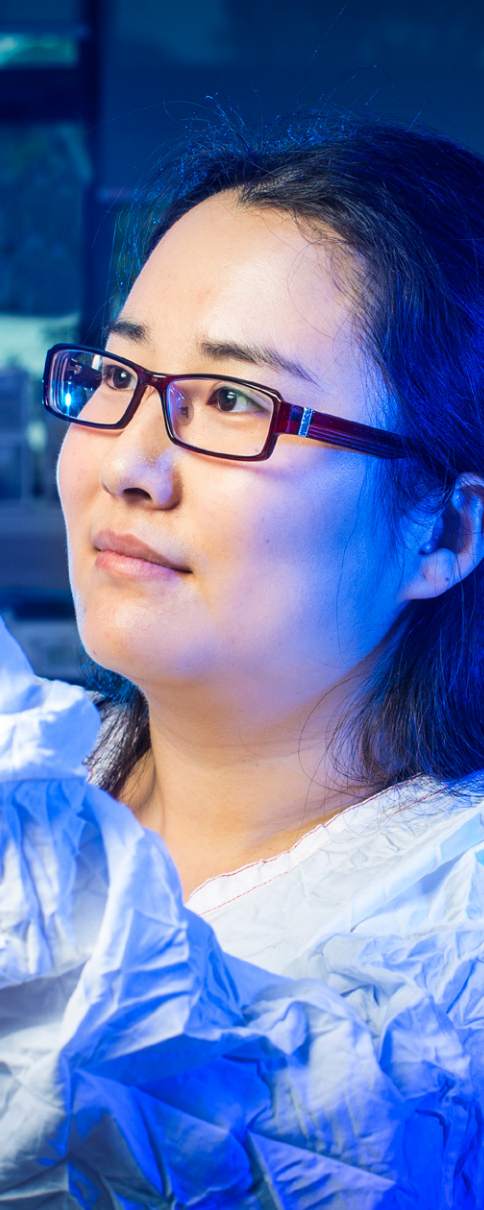
**57**

UOW disciplines rated 'at world standard' or higher

---

Excellence in Research for Australia 2015 (next rating 2019).





## RESEARCH STRENGTHS

From 3D bioprinting, materials engineering and medicinal chemistry, to social transformation, our research is solving complex real-world problems.

UOW's research strengths include:

- Advanced Manufacturing Technologies
- Australian Centre for Cultural Environmental Research
- Australian National Centre for Ocean Resources and Security (ANCORS)
- Centre for Archaeological Science (CAS)
- Centre for Medical and Molecular Bioscience (CMMB)
- Centre for Medical Radiation Physics (CMRP)
- Early Start Research Institute (ESRI)
- Engineering Materials (EM)
- GeoQuEST Research Centre
- National Institute for Applied Statistical Research Australia (NIASRA)

## GLOBAL CHALLENGES PROGRAM

UOW's Global Challenges Program is a strategic research initiative focused on transformative interdisciplinary research that harnesses the expertise of world-class researchers to address complex, real-world problems – to transform lives and regions.

- Over 420 researchers
- 95 interdisciplinary projects across the following themes:

*Transforming lives and regions*

*Living well, longer*

*Manufacturing innovation*

*Sustaining coastal and marine zones*

## Enquiries

**[uow.edu.au/international](http://uow.edu.au/international)**

1300 367 869

[facebook.com/uow](https://facebook.com/uow)

[instagram.com/uow](https://instagram.com/uow)

[twitter.com/uow](https://twitter.com/uow)

[plus.google.com/+universityofwollongong](https://plus.google.com/+universityofwollongong)

[linkedin.com/company/9727](https://linkedin.com/company/9727)

[youtube.com/user/uownow](https://youtube.com/user/uownow)

---

### **STUDY ABROAD & EXCHANGE**

Office of Global Student Mobility

[student-mobility@uow.edu.au](mailto:student-mobility@uow.edu.au)

+61 2 4221 5400

### **AGENTS & REPRESENTATIVES**

Please visit [uow.edu.au/future/international/representatives](http://uow.edu.au/future/international/representatives)

### **GLOBAL CONNECTIONS**

Keep up to date with UOW's International news

by subscribing to our quarterly e-newsletter,

Global Connections:

[uow.edu.au/international/newsletter](http://uow.edu.au/international/newsletter)



UNIVERSITY  
OF WOLLONGONG  
AUSTRALIA