





**VIRTUAL TOURS**  
Check out our 360° panoramas of our facilities at:  
[southwales.ac.uk/virtualtour](http://southwales.ac.uk/virtualtour)

**BOOK YOUR PLACE ONLINE**  
[southwales.ac.uk/opendays](http://southwales.ac.uk/opendays)

**2018 OPEN DAYS**  
Saturday 6 October  
Saturday 3 November  
Future dates to be confirmed for 2019

# OPEN DAYS

Choosing a degree and where to study are big decisions. We're here to help!

The best way to know if a university is right for you is to look around at an Open Day.

USW Open Days offer you the full experience. You can explore the University, sample lectures, see where you'll live, and speak to tutors and students – all giving you a great idea of what it's like to study here.

This year's Open Day programme is packed with everything you need – from workshops and tours, to checking out some of our newest facilities.

Dont worry if you're not able to come for an Open Day. We organise online information sessions throughout the year on Facebook Live and Google Hangout. Follow and 'like' us to keep up-to-date.



# COMMENT

Meet our Bloggers	4
Welcome	5
Welcome from the International Team	6-7
South Wales: The perfect location	8-9
Pontypridd: A breath of fresh air	10-11
Cardiff: A great capital city	12-13
Newport: On the waterfront	14-15
Dubai: A global hub of opportunity	16-17
Success starts here	18-19
Courses	20-34
Online courses offered in partnership with UNICAF and Diploma MSc	35
Pre-university and English study	36-37
General and Intensive English Foundation programmes	38-39
Fees for non-EU students 2019-2020	40-41
Finances for non-EU students	42-43
Visas and immigration procedures for non-EU students	44-45
Fees for EU students 2019-2020	46-47
How to apply	48-49
Your home from home – accommodation	50-51
USW Sport	52-53
Students' Union	54-55
Focus on your career	56-57
Supporting you and your studies	58-59
International Welcome Programme	60
USW Alumni and International Partnerships	61
Useful contacts	62

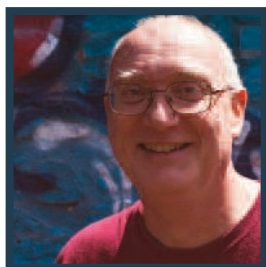


Dunraven Bay, Vale of Glamorgan

# MEET OUR BLOGGERS

The USW Bloggers share what student life is like through their vlogs and blogs – follow them to hear about USW life in their own words.

As well as day-to-day student life, our bloggers can offer lots of advice about applying to university – from Open Days and your personal statement to making the most of student life. If you've got a question about being a student here, just get in touch through Tumblr, Instagram or Twitter.



**PETER GRIFFITHS**

Third year BN (Hons) Adult Nursing student from Wales.

**JIA WEI**

BSc (Hons) International Wildlife Biology student from Malaysia.



**LAUREN COLE**

Student from Swansea studying BSc (Hons) Marketing.



**LUKAS NAVESNIK**

From the Czech Republic, studying Media Production at USW Cardiff.



**MARCIANA ROMERA**

American, second year student, studying BA (Hons) Film at USW Cardiff.



Follow their blogs through Tumblr: [southwales.ac.uk/uswbloggers](https://southwales.ac.uk/uswbloggers) or look for them on Instagram and Twitter: [@uswbloggers](https://twitter.com/uswbloggers)

It is my real pleasure to

# WELCOME

your interest in the University of South Wales and introduce our International Student Guide to you.



Your time here at USW will make a real difference to your life.

Whether you're learning with senior leaders from the BBC or aerospace engineers from major airlines, you'll be part of a professional university that understands employers and gives you a head start for the real world of work.

You'll meet creative and inspiring lecturers and technicians, in an academic community whose learning is underpinned with serious research for the real world, from renewable energy to criminology, media to health services.

We're a very diverse community, and we're proud of it. We're inclusive in who studies at USW and how we teach. If you choose USW, you'll make friends and meet people of every age and background, from 18-year-old undergraduates to established professionals. This will be vital in your own professional network through your career, whether you're just starting out or have already been working for some time.

Your time at USW will broaden your horizons, teach you new ways of looking at the world around you, and unlock your potential to make the most of your career.

Students like you who have made us their choice have gone on to run big international companies and start their own businesses. They've risen to the top of their profession as judges, head teachers and healthcare professionals. They've published books, designed for the catwalk and won Oscars. You could too.

I hope to see you with us soon.

Professor Julie Lydon OBE  
Vice-Chancellor



# WELCOME FROM THE INTERNATIONAL TEAM

Our International and EU Student Recruitment and our Immigration and International Student Advice teams work closely with the University's Enquiries and Admissions team to ensure that applications are dealt with efficiently and in a timely manner. They are here to help you before, during and after you've submitted your application to ensure the process is as smooth as possible.

## International and EU Student Recruitment

We are here to help you with any enquiries you have about studying at the University of South Wales, whether you are thinking about studying with us or if you have already submitted your application.

We know that sometimes it's easier to discuss your application in person, so we often travel overseas to meet with students and parents. To find out when we will be visiting your country, visit your country pages at: [southwales.ac.uk/international](http://southwales.ac.uk/international)

Contact us:  
[international@southwales.ac.uk](mailto:international@southwales.ac.uk)  
+44 (0)1443 654 450

## Immigration and International Student Advice

We are here to offer information and advice to international students before your arrival at the University and during your studies on a range of non-academic matters such as immigration, cultural issues and daily life in the UK. We arrange the University's International Welcome Programme, arrival services, various social

events and the Global Assistants project. We also work with other departments within the University to ensure that the University is compliant under the Tier 4 immigration regulations.

Contact us:  
[international.advice@southwales.ac.uk](mailto:international.advice@southwales.ac.uk)  
+44 (0)1443 482 083.  
You can also contact us through our 'Ask an Advisor' live chat facility. Visit [southwales.ac.uk/international](http://southwales.ac.uk/international) for more information.



Immigration and International Student Team

From the left: James Morris, Kath Williams, Tim Goss



From the left: Joe Paley, Sally Fairburn, Dr Lisa Davies, Sally-Anne Awcock, Richard Stacey, Jo Scaplehorn.

International and EU Team



## DID YOU KNOW?

We have an International Alumni Association, so you can keep in touch with friends for life, all over the world.

International Welcome Week

# SOUTH WALES: THE PERFECT LOCATION

South Wales is an exceptional part of the UK, with city life, countryside and coast.

With campuses in Pontypridd, Cardiff and Newport, you can enjoy all that south Wales has to offer – city life and culture, stunning beaches and breathtaking countryside.

South Wales is a welcoming place to study and our students love the friendly atmosphere at USW. All our campuses are easily reached by road, rail and air, so wherever you come from you're never far from home. Turn over to discover more about where you'll study.



Brecon Beacons National Park

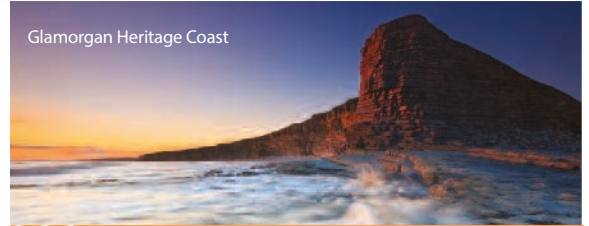
## DID YOU KNOW?

WELSH IS SPOKEN BY SOME PEOPLE IN WALES BUT DON'T WORRY, EVERYONE SPEAKS ENGLISH AND YOUR CLASSES AND DAY-TO-DAY ACTIVITIES WILL BE CARRIED OUT IN ENGLISH.



"There are a lot of reasons for choosing to study in Wales, for example, Wales offers a low cost of living compared to other parts of the UK. Also, accommodation, food, entertainment, travel and education are all very affordable."

Nurshuhada Abdul Rahman, Malaysia  
MSc Fashion Marketing



Glamorgan Heritage Coast

USW is located on three sites — Pontypridd, Cardiff and Newport. Turn over to find out more



- Pontypridd Campus, Treforest and Glyntaff sites
- Cardiff Campus
- Newport City Campus
- Airports

"The UK offered me my preferred course, multi-cultural environment, academic excellence and financial assistance. I found USW's location exquisite, serene and peaceful. People are friendly and co-operative. I have enjoyed living here."

Attique ur Rahman,  
MSc Forensic Audit and Accounting,  
Chevening Scholar from Pakistan



# PONTYPRIDD: A BREATH OF FRESH AIR

You'll find USW Pontypridd in the heart of south Wales, just 20 minutes from Cardiff by train.



USW Pontypridd, Treforest

# PONTYPRIDD: WHAT YOU'LL FIND

- Student community and social scene
- Green open spaces and fresh air
- 20 minutes from Cardiff by train
- Warm and friendly welcome
- National Lido of Wales
- Cities, mountains and beaches all in easy reach

## WATCH ONLINE

Get a bird's eye view of campus — watch our aerial video: [southwales.ac.uk/pontytour](https://southwales.ac.uk/pontytour)



USW Pontypridd, Glyntaff

## What's at USW Pontypridd?

- Halls of Residence
- Students' Union
- Library and Student Centre
- Sport Centre
- Food, drink, coffee and cafes
- USW Sport Park
- Train station with regular trains to Cardiff and beyond
- Chaplaincy and multi-faith prayer facilities
- International Zone

## What you can study here:

- Accounting
- Business
- Computing
- Engineering
- Health
- Humanities
- Law
- Police Sciences
- Psychology
- Science
- Sport
- Pre-sessional English Language Programmes

## USW Pontypridd

USW Pontypridd is surrounded by green open spaces. Our students say they love the community atmosphere, as well as the convenience of living and studying in the same place.

USW Pontypridd is made up of two sites; Treforest and Glyntaff. From listed buildings to new, modern structures, Pontypridd reflects the University's history and its ambitions. Here, you'll find everything you need in one place – your classes, the library, cafes and bars to eat and drink, and friends to spend time with.



Oscar Ferreira do Carmo, Chevening Scholar, Brazil Master of Business Administration (MBA)

"South Wales is definitely somewhere you can make a home, away from home. Cardiff is only a 20 minute train journey away from the Pontypridd Campus, therefore city life is close enough. I've adopted a healthy lifestyle by joining the gym and make the most of the opportunities available to me. My overall experience here has been amazing."

Oscar Ferreira do Carmo, Chevening Scholar, Brazil Master of Business Administration (MBA)

DISCOVER **CARDIFF** JUST 20 MINUTES FROM PONTYPRIDD BY TRAIN →

# CARDIFF: A GREAT CAPITAL CITY

USW Cardiff is in the city centre, putting you at the heart of the country's capital.



USW Cardiff



## USW Cardiff

USW Cardiff is home to our creative industries students.

We've just finished a new phase of investment and development, so we can offer even more specialist facilities for you to develop your creative work in a professional environment. You'll find study spaces, the library and the SU – all in the one impressive building. Take a look around online: [southwales.ac.uk/cardiff](https://southwales.ac.uk/cardiff)

Cardiff is a major centre for media production in the UK, with the BBC's Roath Lock drama studios on the doorstep and Pinewood Studios nearby. The city centre is also set to welcome the headquarters of BBC Wales, while ITV Wales is making Cardiff Bay its new home.

Well known as a city of culture and entertainment, the opportunities for creative industries students in Cardiff are endless.



## STUDENT LIFE IN CARDIFF

See what the capital has to offer students: [southwales.ac.uk/10postcodes](https://southwales.ac.uk/10postcodes)

## What you can study here:

- Animation and Games
- Design and Communication
- Drama, Dance and Performance
- Fashion
- Film and Visual Effects
- Journalism and Media
- Music and Sound
- Photography

"Wales without doubt has become one of my favorite spots in the UK because of its cozy feeling and how easily you can fit in, which helped me feel at home. The people are very warm and friendly, and Cardiff in particular is multicultural".

Muhanned Kalash, Chevening Scholar, Libya, MSc Global Governance



## DID YOU KNOW?

Cardiff was voted the most cost-effective city in the UK by RBS Student Living, 2017.

DISCOVER **NEWPORT**. JUST 15 MINUTES FROM CARDIFF BY TRAIN →

## WHAT'S WAITING FOR YOU IN CARDIFF?

- Vibrant arts and live music scene
- City of attractions – from the castle to the bay
- Great nightlife, every night
- Shopper's paradise – indie Edwardian arcades to high-end fashion brands
- International sporting occasions
- Green spaces – city of parks and trees
- Just two hours from London by train
- Multicultural capital city

# NEWPORT: ON THE WATERFRONT

Newport is a great student city with a bright future.



## USW Newport

Right at the heart of the city, overlooking the River Usk, is one of the University's most iconic buildings and it couldn't be in a better location to embrace city life in Newport. Plus, the Halls of Residence are just a few minutes' walk away, so you won't have to get up too early for your 9am lectures!

USW Newport is home to a wide range of subject areas, so you'll benefit from studying in a diverse atmosphere.

We're continually developing facilities – there's a new cafe with Starbucks coffee, Students' Union facilities and study spaces, with more developments to come. Whether you're studying a business course or training to be a teacher, you won't be disappointed by the fantastic facilities at USW Newport.



## What you can study here:

- Business
- Counselling
- Hotel and Hospitality Management
- Social Work
- Teacher Training
- Working with Children and Families
- Youth and Community Work

## TAKE A CLOSER LOOK

Check out student life  
in Newport:  
[southwales.ac.uk/  
newport](http://southwales.ac.uk/newport)

## NEWPORT: WHAT YOU'LL FIND

- Unique city with a bright future
- Great nightlife and entertainment
- New retail and leisure development opposite USW Newport Campus
- Proud industrial heritage
- Less than two hours from London by train

USW Newport



# DUBAI: A GLOBAL HUB OF OPPORTUNITY

## Engineering excellence

Producing top engineers and industry-ready graduates is what the University of South Wales has been doing for more than a century. We offer specialist higher education courses and facilities for aircraft maintenance at USW Pontypridd in the UK, and now at our USW Dubai Campus in the UAE.

Our Aircraft Maintenance Engineering course is recognised by European Aviation Law, as detailed by the European Aviation Safety Agency (EASA). We are the only university in the UK to integrate the industry-standard qualification 'EASA Part-66' with an Honours degree, delivered on a single campus. On completion of the required EASA training, students are able to obtain a full EASA Part-66 Aircraft Maintenance Engineer Licence in just two years, which usually requires five years' professional experience.

## Opportunities in Dubai

This new development offers students the opportunity to study in the heart of an emerging global hub for the aviation industry. On the doorstep of the world's largest airport in the making, Al Maktoum International Airport, our campus is situated in Dubai's purpose-built city for business and industry, Dubai South.

Ideally placed to expand its delivery in the future, our campus has a range of specialist facilities. To enhance your learning, we'll be utilising our strong industry links and working with a number of key partners in the region.

Join us and the many aircraft maintenance and aeronautical graduates who have found employment in the aerospace industry worldwide.

## DID YOU KNOW?

Demand for commercial airline engineers for the next 20 years is set to be above 648,000. (Boeing 2017)

## COURSES AT DUBAI

Gain a recognised British Bachelor degree through a range of accessible routes of study:

- BSc (Hons) Aircraft Maintenance Engineering (including Foundation Year)
- BSc (Hons) Aircraft Maintenance Engineering
- BSc (Hons) Aircraft Maintenance Engineering (Top Up)

We intend to expand the range of courses on offer. For the latest information on the exciting development and full course information, visit: [southwales.ac.uk/dubai](http://southwales.ac.uk/dubai)

## DID YOU KNOW?

Courses and degree certificates at Dubai are identical to those gained at our UK campuses.



Dubai skyline

## What makes Dubai a great place to study?

- It is a truly multi cultural city
- A transcontinental hub for aviation
- It has world famous architecture
- Stunning attractions, resorts and parks
- Host city for the World Expo 2020

## OPEN DAYS VISIT US

Open Days give you an opportunity to explore the campus and find out what we have to offer. Find out about courses, accommodation, student funding and scholarships, and even the application process. Our academic team will answer your questions and make you feel welcome. Events run throughout the year visit our website to book your place: [southwales.ac.uk/dubai](http://southwales.ac.uk/dubai)



## OUR DUBAI CAMPUS INCLUDES:

- Aircraft assembly hangar
- Avionic laboratory
- Riveting workshop
- Gas turbine engine workshop
- Computer laboratories
- Student social space
- Student library

# YOUR FUTURE IS OUR PRIORITY

The University of South Wales is one of the largest universities in the UK, offering our students excellent opportunities and prospects.

A course at USW is more than just a qualification. Inside and outside the classroom, we help you achieve your potential professionally and personally. Here's what you need to know about studying here.



USW Graduation

## Quality courses

All universities are subject to a regular institutional review that audits teaching quality and academic standards. This is carried out by the UK's Quality Assurance Agency (QAA) – an independent body financed by the higher education funding councils and UK universities themselves, to ensure that students get the best possible teaching and support during their study.

As a result, students can be sure that a University of South Wales degree is not only quality approved and internationally recognised, but will also prepare them for a career in even the most demanding environments. See [www.qaa.ac.uk/InstitutionReports](http://www.qaa.ac.uk/InstitutionReports) to read the latest review report.



Shortlisted Teaching and Learning Strategy of the Year

## Career focused

Employability is at the heart of everything we do. We seek to ensure you'll be ready to start a successful career as soon as you graduate. We've even made employability part of the curriculum, with teaching informed by what happens in the real world and skills you'll need for the workplace.

## Professional skills

We continually invest in our campuses to ensure you have the best possible student experience and gain all the skills you need. Our students learn about their profession in environments that recreate the workplace by using the same equipment and software. This approach ensures you'll be ready for the workplace and have the confidence to succeed.

95%

of our graduates are in employment or further study within six months of graduation.

(DLHE 2016/17)

## Accredited courses

Many courses at the University have been accredited by professional bodies. This means they are of the highest standard and can grant you exemptions from professional exams as an added extra. Here are some of the professional bodies we work with:

ACCA	BCS	The Geological Society
Creative Skillset	Engineering Council	Royal Society of Chemistry
RICS	Civil Aviation Authority	The Chartered Society of Forensic Sciences
CIPD	BJTC	Royal Society of Biology
CIPS	Royal Aeronautical Society	The British Psychological Society
CIM	JBM	IET
APM	CIPR	CMI
CILT	IDM	Institution of Mechanical Engineers
ILM	PRCA	The General Civil Aviation Authority
CIEEM	Royal Geographical Society (with IBG)	

## Student life

At university you'll make friends for life, try out lots of new things and become more independent than ever before. As the largest university in Wales, we have thousands of students who come here to study every year, so you'll meet plenty of people from all over the world.

## Research that matters

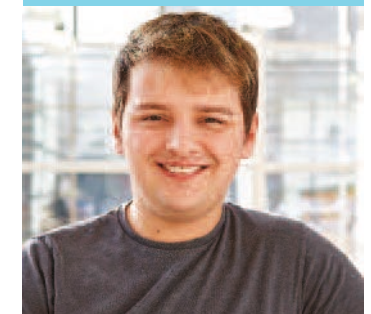
Research at USW makes a real difference. It provides solutions to problems and informs decisions that affect society, culture and the economy.

In the latest Research Excellence Framework (REF 2014), half of our research was rated world-leading or internationally excellent. This means you'll be taught by lecturers who are at the forefront of their fields, giving you a window to the latest thinking and developments.

For further information about our current research, research opportunities and how to become a research student, visit our Graduate Research Office webpages [southwales.ac.uk/gro](http://southwales.ac.uk/gro)

"The course is accredited by the Chartered Institute of Personnel Development (CIPD), which is internationally recognised by employers. Hence the reason why USW became my first choice when applying to University. The course equips you with the knowledge, skills and professional attitude employers are looking for."

Stephen O'Shea, Wales, BA (Hons) Human Resource Management



# WHAT COURSE WILL YOU CHOOSE?


With so many courses on offer, from foundation to postgraduate level, deciding what to study can be difficult. Here's some advice on how to choose the course and type of study that's right for you.

Think about the kind of person you are and what you like doing. What are you good at? What have you enjoyed studying? What kind of career do you want? It's important you enjoy what you study and how you are taught. Do you prefer research with written sources, or do you want hands-on experience?

When you see our excellent courses, facilities and graduate employment rate, we hope you'll choose USW. For the most up-to-date list of courses and more information, visit: [southwales.ac.uk/courses](http://southwales.ac.uk/courses)

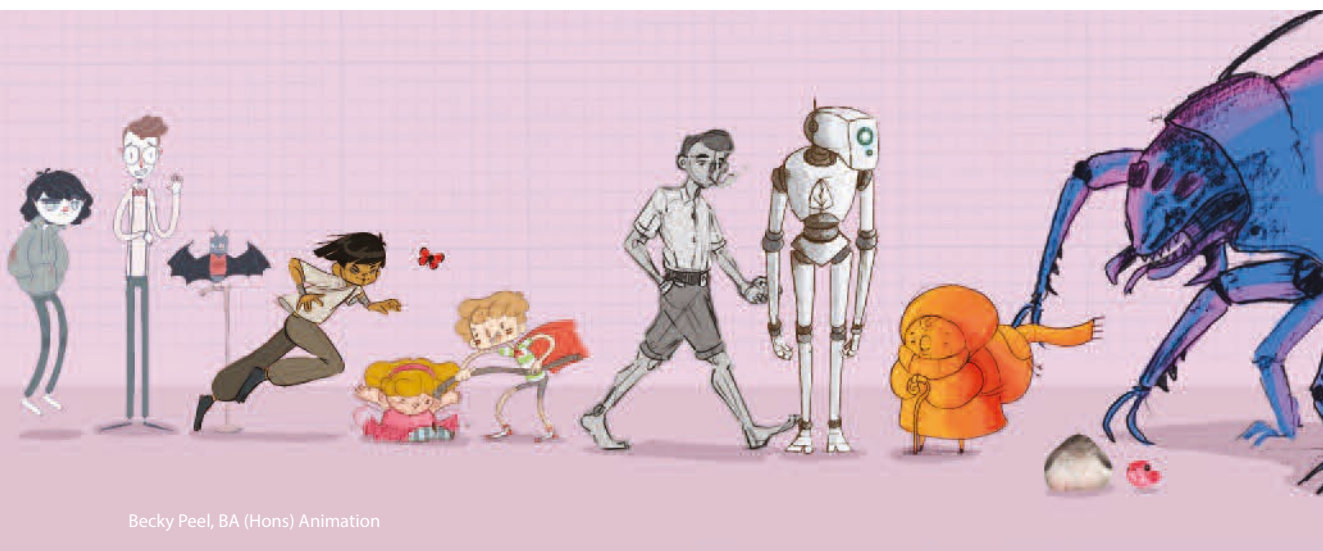
## KEY

- USW Cardiff
- USW Newport
- USW Pontypridd
- Online Delivery
- USW Dubai



"The computer animation course is really interesting. Our tutors told us to enjoy the projects and have fun. We take life drawing classes to improve our drawing, and contexture classes to learn about animation and film theories. The people here are very nice and helpful, which makes me enjoy studying at the University."

**Yue Liu, China**  
BA (Hons) Computer Animation



Becky Peel, BA (Hons) Animation

# GM FINANCIAL



"Studying in Wales is the best decision I've made. The goods and services available are comparable to the rest of the UK, but the cost of living is more affordable. The quality of its education and research is of a high standard. The support services the University provides for international students are excellent."

**Cheng De Chang, Malaysia**  
MSc Finance and Investment

Matthew Sensier,  
BA (Hons) Accounting with Finance graduate



## Accounting and Finance

- BA (Hons) Accounting and Finance
- BSc (Hons) Banking, Finance and Investment (Top Up)
- BA (Hons) Forensic Accounting

- MSc Finance and Investment
- MSc Forensic Audit and Accounting
- MSc International Banking and Finance
- MSc Professional Accounting (with ACCA tuition)

### DID YOU KNOW?

The University of South Wales has been awarded Platinum Status as an Approved Learning Partner by ACCA.

## Animation and Games

- BA (Hons) Animation (2D and Stop Motion)
- BA (Hons) Computer Animation
- BA (Hons) Computer Games Design
- BA (Hons) Game Art

### DID YOU KNOW?

96% of BA (Hons) Computer Animation students were satisfied with their course (NSS 2018)

- MA Animation
- MA Games Enterprise

### DID YOU KNOW?

Our graduates have been employed at prestigious studios and worked on films such as *Hellboy 2*, *P-Force*, *Watchmen*, *Beowulf* and *Happy Feet*.

## Art

- BA (Hons) Creative and Therapeutic Arts
- MA Arts Practice (Arts, Health and Wellbeing)
- MA Arts Practice (Fine Art)

### DID YOU KNOW?

Our BSc (Hons) Human Biology lecturers are specialists in areas that include cardiovascular physiology, biomechanics, immunology, genetics, and tissue regeneration.

## Biological Sciences

- BSc (Hons) Biology\*
- BSc (Hons) Forensic Biology
- MSci Forensic Biology
- BSc (Hons) Human Biology\*
- BSc (Hons) International Wildlife Biology
- BSc (Hons) Medical Sciences
- BSc (Hons) Medicinal and Biological Chemistry\*
- BSc (Hons) Natural History\*
- BSc (Hons) Natural History and Media\*\*

**100%**  
of BSc (Hons) Human Biology students were satisfied with their course.  
(NSS 2018)

\* Foundation year available  
\*\* Subject to validation

## Built Environment

- BSc (Hons) Construction Project Management\*
- BSc (Hons) Project Management (Surveying)\*
- BSc (Hons) Quantity Surveying and Commercial Management\*
- MSc Construction Project Management
- MSc Safety, Health and Environmental Management

### DID YOU KNOW?

94% of our Built Environment graduates are in employment or further study within six months of graduation (Graduate Survey 2016).

## Business and Management

- BA (Hons) Business Management
- BA (Hons) Business Studies (Top Up)
- BA (Hons) Business and Accounting (Top Up)
- BA (Hons) Business and Finance (Top Up)
- BA (Hons) Business and Human Resource Management (Top Up)
- BA (Hons) Business and Marketing (Top Up)
- BA (Hons) Business and Supply Chain Management (Top Up)
- BA (Hons) Event Management
- BA (Hons) Hotel and Hospitality Management

- BA (Hons) Human Resource Management
- BA (Hons) International Business (Top Up)
- BA (Hons) Logistics and Supply Chain Management
- BA (Hons) Marketing
- BA (Hons) Public Relations
- BA (Hons) Strategic Customer Management\*\*

- Doctor of Business Administration (DBA)
- MBA (Master of Business Administration)
- MSc Engineering Management
- MSc Global Governance
- MSc Health Economics
- MSc Human Resources Management
- MSc International Business and Enterprise
- MSc International Logistics and Supply Chain Management
- MSc Leadership and Management
- MSc Leadership in Healthcare
- MSc Management
- MSc Marketing
- MSc Project Management
- MSc Public Relations
- MSc Strategic Digital Marketing
- MSc Strategic Leadership (Health and Social Care)
- MSc Strategic Procurement Management

### DID YOU KNOW?

We work with global companies, including IBM, Rolls-Royce, HSBC and the BBC.

\* Foundation year available  
\*\* Subject to validation



USW Pontypridd

# 100%

of our Human Resource Management students are satisfied with their course.

(NSS, 2018)



“Studying abroad can be a big change to your life. The University recognises this and it’s put the support in place to help you adapt to your new surroundings. The facilities are fantastic and everything you need to succeed is at your disposal. All you need to do is make the most of what’s available.”

**Gertrude Nankumba, Uganda**  
MSc Human Resource Management

## Chemistry and Pharmaceutical Science

- BSc (Hons) Chemistry\*
- MSci Chemistry
- BSc (Hons) Medicinal and Biological Chemistry\*\*
- BSc (Hons) Pharmaceutical Science\*
- MSci Pharmaceutical Science

## Chiropractic

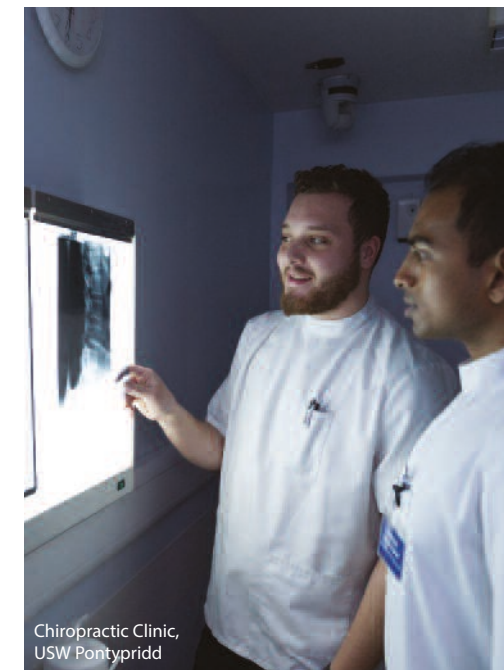
- Master of Chiropractic\*



“The University of South Wales is the only university in the UK that offers a fully integrated undergraduate chiropractic degree programme accredited by the General Chiropractic Council and the

European Council on Chiropractic Education. The University offers students a chance to work as a student clinician in the Welsh Institute of Chiropractic outpatient clinic during the final year of the programme, enabling them to build experience and enhance clinical skills by giving treatments to patients.”

**Nigel Nathan Chin Jie Jiun, Malaysia**  
Master of Chiropractic



## Computing

- BSc (Hons) Applied Cyber Security
- BSc (Hons) Computer Science\*
- MComp Computer Science
- BSc (Hons) Computer Applications Development\*
- MComp Computer Applications Development
- BSc (Hons) Computer Forensics\*
- MComp Computer Forensics
- BA (Hons) Computer Games Design
- BSc (Hons) Computer Games Development\*
- MComp Computer Games Development
- BSc (Hons) Computer Security\*
- MComp Computer Security
- BA (Hons) Game Art
- BSc (Hons) Information Communication Technology\*
- MComp Information Communication Technology
- MSc Computer Forensics
- MSc Computer Systems Security
- MSc Computing and Information Systems
- MSc Cyber Security
- MSc Data Science

### DID YOU KNOW?

93% of our Computing graduates are in employment or further study within six months of graduation (Graduate Survey 2016).

\* Foundation year available  
\*\* Subject to validation

## Criminology

- BSc (Hons) Criminology and Criminal Justice and Youth Justice ●
- BSc (Hons) Criminology and Criminal Justice ●
- BSc (Hons) Criminology and Criminal Justice and Sociology ●
- BSc (Hons) Criminology and Criminal Justice with Psychology ●
- BSc (Hons) Forensic Science with Criminology ●
- BSc (Hons) Psychology with Criminology and Criminal Justice ●
- LLB (Hons) Law with Criminology and Criminal Justice ●
  
- MSc Crime and Justice ●
- MSc Working with Adult and Young Offenders ●

## Dance

- BA (Hons) Dance ●

## Design

- BA (Hons) Advertising Design ●
- BA (Hons) Computer Games Design ●
- BA (Hons) Illustration ●
- BA (Hons) Fashion Design ●
- BA (Hons) Fashion Promotion ●
- BA (Hons) Fashion Marketing and Retail Design ●
- BA (Hons) Graphic Communication ●
- BA (Hons) Interior Design ●
- BA (Hons) TV and Film Set Design ●
  
- MA Graphic Communication ●

### DID YOU KNOW?

You can go online to watch criminology videos and read our student stories: [southwales.ac.uk/criminology](http://southwales.ac.uk/criminology)

## Drama and Performance

- BA (Hons) Performance and Media ●
- BA (Hons) Performing Arts ●
- BA (Hons) Theatre and Drama ●
  
- MA Drama ●
- MA Songwriting and Production ●

## Education

- BA (Hons) Early Years Education and Practice (with Early Years Practitioner status) ●
- BA (Hons) Working with Children and Families ●
- BSc (Hons) Childhood Studies (Top Up) ●
  
- MA Child and Adolescent Mental Health (CAMH) ●
- MA Education (Innovation in Learning and Teaching) ●
- MA Leadership and Management (Education) ●
- MA SEN/ALN (Additional Learning Needs) ●
- MA Teaching English to Speakers of Other Languages (TESOL) ●
- MA SEN/ALN (Autism) ●

### DID YOU KNOW?

100% of our BA (Hons) Graphic Communication Students were satisfied with their course (NSS 2018).



Dance students rehearsing at USW Cardiff

### DID YOU KNOW?

As part of our courses, you can sample diverse skills such as music, dance, visual theatre, circus arts, street arts and carnival.

## DO YOU DOODLE?

See how our students marked National Doodle Day: [southwales.ac.uk/doodle](http://southwales.ac.uk/doodle)

# 100%

of our BA (Hons) Interior Design graduates are in employment or further study within six months of graduation.

(Graduate Survey 2016)

Olivia Laxton, BA (Hons) Interior Design

## Engineering (Aerospace)

- BEng (Hons) Aeronautical Engineering\*
- BSc (Hons) Aircraft Maintenance Engineering\*
- BSc (Hons) Aircraft Maintenance Engineering (Top Up)
- MEng Aeronautical Engineering
  
- MSc Aeronautical Engineering
- MSc Aviation Engineering and Management



"Wales is one of the countries that gives a big welcome to international students. The living cost here is much lower compared to other places in the UK and it offers stunning countryside to explore. Wales offers world-class teaching and research in education. Come and discover it for yourself. Croeso i Gymru - Welcome to Wales in Welsh."

Lalitambiga Gandhi (Lali), Malaysia  
MSc Aircraft Maintenance Engineering

\* Foundation year available



"The University of South Wales is one of the best for civil engineering. The facilities are very good, especially the structural lab and the computer lab. The course has fully prepared me to work in the construction industry by giving me an awareness of health and safety on a site while working, and giving me the knowledge and confidence to solve problems. One of the most useful things I have learnt is how to handle myself in a professional manner. I now feel capable of handling any type of professional challenge and situation."

Thirunathan Pradeepkumar, Sri Lanka  
BSc (Hons) Civil Engineering

## Engineering (Civil)

- BEng (Hons) Civil Engineering
- BSc (Hons) Civil Engineering\*
- BSc (Hons) Civil Engineering (Post Diploma)
- MEng Civil Engineering
  
- MSc Civil and Structural Engineering
- MSc Civil Engineering and Environmental Management



Materials Testing Laboratory, USW Pontypridd

**100%**  
of our BSc (Hons) Lighting Design and Technology students were satisfied with their course  
(NSS 2018).



"When I graduated from my degree I decided to study MSc Project Management. USW creates an environment that encourages growth; I love the positive atmosphere around the University and the diversity of both the people and the things they study."

Mohamed Al Hajeri, Qatar  
BSc (Hons) Mechanical Engineering

## Engineering (Electrical and Electronic)

- BEng (Hons) Electrical and Electronic Engineering\*
- MEng Electrical and Electronic Engineering
- BSc (Hons) Electrical and Electronic Engineering (Top Up)
- BSc (Hons) Lighting Design and Technology\*
- BSc (Hons) Sound and Live Event Production\*
  
- MSc Electronics and Information Technology
- MSc Mobile and Satellite Communications

### MEng AWARDS

Our MEng awards allow you to train to Masters level as an undergraduate student, gaining advanced technical and professional skills to distinguish yourself. They also offer a full educational base for professional development to become a Chartered Engineer, so you'll graduate much closer to professional membership and taking your career to the next level.

## Engineering (Mechanical)

- BEng (Hons) Mechanical Engineering\*
- MEng Mechanical Engineering
- BSc (Hons) Mechanical Engineering
  
- MSc Mechanical Engineering
- MSc Professional Engineering

\* Foundation year available

**100%**  
of our Mechanical Engineering graduates are in employment or further study within 6 months of graduation.  
(Graduate Survey 2016).



**DID YOU KNOW?**  
Aeronautical Engineering students can use our MP521 flight simulator to try out the flight characteristics of their aircraft designs.

Wayne Kwenda,  
BSc (Hons) Aircraft Maintenance Engineering,  
Product Support Engineering, General Electric Aviation Wales

## English and Creative Writing

BA (Hons) English\*  
BA (Hons) English and Creative Writing\*

MA English by Research  
MA Teaching English to Speakers of Other Languages (TESOL)  
MPhil in Writing

## Fashion

BA (Hons) Fashion Design  
BA (Hons) Fashion Marketing and Retail Design  
BA (Hons) Fashion Promotion

## VISIT GLOBAL FASHION CAPITALS

Students on our fashion courses get the chance to go on a number of optional field visits, including a trip to New York during International Fashion Week. In recent years our students have also visited Paris, London and Copenhagen, to name but a few (additional costs apply).

## Film and Visual Effects

BA (Hons) Film  
BA (Hons) Cinema  
BA (Hons) Visual Effects and Motion Graphics

## Forensic Science

BSc (Hons) Analytical and Forensic Science (Top Up)  
BSc (Hons) Forensic Biology  
BSc (Hons) Forensic Investigation  
BSc (Hons) Forensic Science\*  
BSc (Hons) Forensic Science with Criminology\*  
MSci Forensic Biology  
MSci Forensic Investigation  
MSci Forensic Science  
MSci Forensic Science with Criminology  
  
MSc Analytical and Forensic Science

## DID YOU KNOW?

We have a special multi-room simulations of crime scenes to provide hands-on practise for the forensic investigators of tomorrow.

\* Foundation year available  
\*\* Subject to validation

## DID YOU KNOW?

USW is top in Wales and joint top in the UK for student satisfaction in physical geographical sciences (NSS 2018).

## Geography, Geology and the Environment

BSc (Hons) Geography\*  
BSc (Hons) Geology\*  
BSc (Hons) Geology and Physical Geography  
BSc (Hons) Natural History\*  
BSc (Hons) Natural History and Media\*\*  
MGeog Geography  
MSci Hazard and Disaster Management  
  
MSc Hazard and Disaster Management  
MSc Renewable Energy and Resource Management  
MSc Safety, Health and Environmental Management  
MSc Wildlife and Conservation Management

## Health Sciences

BSc (Hons) Community Health and Wellbeing (Top Up)  
BSc (Hons) Health and Social Care Management  
BSc (Hons) Public Health  
  
MSc Pain Management (online)  
MSc Strategic Leadership (Health and Social Care)

## History

BA (Hons) History\*  
  
MA History by Research

## DID YOU KNOW?

For the last ten years, our students have reached the national finals of the Royal Television Society awards in London, winning prizes in the documentary and entertainment categories.



"The reason I applied for the Chevening scholarship was to gain knowledge and experience at international level in my field so that I can share this knowledge with other occupational health and safety professionals in Mongolia. I would definitely recommend USW, not only to Chevening scholars, but to any other students thinking about studying in the UK."

Otgontsetseg Bishkhorloo, Chevening Scholar, Mongolia, MSc Safety, Health and Environmental Management

## DID YOU KNOW?

BBC Fellows at USW are senior BBC leaders drawn from key specialist areas. They will lecture at the University and host USW students at BBC headquarters across the UK.

## Journalism and Media

- BA (Hons) Journalism
- BA (Hons) Media Production
- BA (Hons) Media, Culture and Journalism
- BA (Hons) Performance and Media
- BA (Hons) Photojournalism
- BA (Hons) Sports Journalism\*\*

## Law

- LLB (Hons) Law
- LLB (Hons) Legal Practice (Exempting)
- LLB (Hons) Law (Accelerated Route)
- LLB (Hons) Law with Criminology and Criminal Justice
- Legal Practice Course (LPC)
- LLM Laws (with options to specialise in Civil and Human Rights, Criminal Justice, or International Commercial Law)

## Mathematics

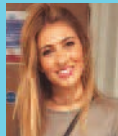
- BSc (Hons) Mathematics\*
- MMath Mathematics
- MSc Data Science

## DID YOU KNOW?

USW is the best in Wales and joint top in the UK for student satisfaction in Mathematics (NSS 2018).

## Medical Sciences

- BSc (Hons) Medical Sciences



"I am currently living in a house in Treforest and it is amazing. Prices for rent are very reasonable and all necessities you require are nearby. You can visit Cardiff at any time as it is only 25 minutes away by train."

Olivia Jane Photiou, Cyprus  
BSc (Hons) Medical Sciences

\* Foundation year available  
\*\* Subject to validation



## WHY WAIT?

Our LLB (Hons) Legal Practice (Exempting) degree means that if you want to be a solicitor, you can enter the profession in just three years instead of the traditional four years.

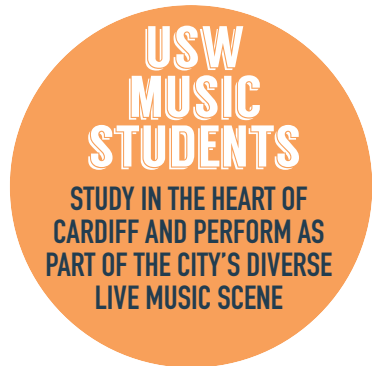
Hafsa Abdul Hardi

## Midwifery

- Bachelor of Midwifery (Hons) Registered Midwife

## Music and Sound

- BA (Hons) Music Business
- BA (Hons) Popular and Commercial Music
- MA Music Therapy
- MA Songwriting and Production
- MSc Music Engineering and Production



## Nursing and Health Sciences

- Bachelor of Nursing (Hons) (Adult)
- Bachelor of Nursing (Hons) (Child Health)
- Bachelor of Nursing (Hons) (Learning Disabilities)
- Bachelor of Nursing (Hons) (Mental Health)
- BSc (Hons) Acute and Critical Care
- BSc (Hons) Community Health Studies (with specialist pathways)
- BSc (Hons) Professional Practice (with specialist pathways)
- BSc (Hons) Specialist Community Public Health Nursing (with specialist pathways)
- MSc Acute Medicine
- MSc Advanced Clinical Practitioner
- MSc Advanced Practice
- MSc Applied Health Economics

- MSc Clinical Endodontics
- MSc Community Health Studies (with specialist pathways)
- MSc Cosmetic Medicine
- MSc Dermatology in Clinical Practice
- MSc Diabetes
- MSc Disaster Healthcare
- MSc Endocrinology
- MSc Gastroenterology
- MSc Medical Education
- MSc Obesity and Weight Management
- MSc Pain Management
- MSc Preventative Cardiovascular Medicine
- MSc Professional Practice (with a number of pathways)
- MSc Public Health
- MSc Respiratory Medicine
- MSc Rheumatology
- MSc Sexual and Reproductive Medicine
- MSc Specialist Community Public Health Nursing (with specialist pathways)



Nursing students managing a case during a simulated shift, Clinical Simulation Centre, USW Pontypridd



"I chose to study nursing and I wanted to further my studies here in the UK. I would recommend nursing students to choose the University of South Wales as it has the best equipped clinical simulation centre."

Maisa Mei Lee, Malaysia  
BN (Hons) Nursing (Adult)



## Photography

BA (Hons) Documentary Photography  
BA (Hons) Photography  
BA (Hons) Photojournalism

MA Documentary Photography



"I compared a few universities in the UK and Lithuania and I saw that USW has some great photography courses. By the time I graduate, I will have experience in most of the photography genres and with equipment such as cameras, studios and darkrooms, so I will have enough skills to become a freelance photographer or work in a studio when I graduate."

Migle Kryzauskaite, Lithuania  
BA (Hons) Photography

## Policing and Security

BSc (Hons) Police Sciences\*  
MSc International Security and Risk Management

## Psychology

BSc (Hons) Childhood Development  
BSc (Hons) Criminology and Criminal Justice with Psychology  
BSc (Hons) Psychology  
BSc (Hons) Psychology with Behaviour Analysis  
BSc (Hons) Psychology with Counselling  
BSc (Hons) Psychology with Criminology and Criminal Justice  
BSc (Hons) Psychology with Developmental Disorders  
BSc (Hons) Sport and Exercise Psychology

DPsych Counselling Psychology  
MSc Behaviour Analysis and Therapy  
MSc Clinical and Abnormal Psychology  
MSc Play Therapy  
MSc Psychology by Research  
MSc Systemic Psychotherapy

### DID YOU KNOW?

You could gain clinical experience on campus – every undergraduate student is guaranteed a six-week placement in our Behaviour Analysis Clinic. There are even additional placements if you want to build on your experience.

**90%**  
of our BA (Hons) Photography graduates are in employment or further study within six months of graduation.

(Graduate Survey 2016)



Tim Smith, BA (Hons) Documentary Photography

\* Foundation year available

## Psychotherapy and Counselling

BA (Hons) Counselling and Therapeutic Practice  
BA (Hons) Creative and Therapeutic Arts  
BSc (Hons) Psychology with Counselling  
BSc (Hons) Systemic Counselling

DPsych Counselling Psychology  
MA Art Psychotherapy  
MA Consultative Supervision  
MA Counselling Children and Young People  
MA Integrative Counselling and Psychotherapy  
MA Music Therapy  
MSc Cognitive Behavioural Psychotherapy  
MSc Play Therapy  
MSc Systemic Psychotherapy

## Public and Emergency Services

BA (Hons) Public Services

MSc Global Governance  
MSc Health and Public Service Management  
MSc Strategic Leadership (Health and Social Care)

## Religious Studies

MA Buddhist Studies

## Renewable and Sustainable Energy

MSc Renewable Energy and Resource Management



"USW is one of the best universities in the UK for Renewable Energy. The course is well structured and efficient and the professors are helpful. Some of the facilities include laboratories and the Hydrogen Centre. There are also several trips to research centres that are owned by USW and to other renewable energy plants around Wales."

Sharif Khoshnaw, Chevening Scholar, Kurdistan  
MSc Renewable Energy and Resource Management

## Social Work and Social Care

BA (Hons) Working with Children and Families  
BSc (Hons) Social Work

**100%**  
of our Social Work graduates are in employment or further study within six months of graduation.

(Graduate Survey 2016)



"The benefit of studying this degree is that there are a wealth of jobs available in the public sector, where there will always be a need. The knowledge and skills you develop on the course are transferable, broadening your career options."

Angeline Tshiyane, Zimbabwe  
BA (Hons) Public Services student

## Sociology

BSc (Hons) Sociology

## Sport

Foundation Degree Sports Coaching and Development

Foundation Degree Rugby Coaching and Development (Welsh Rugby Union)

BSc (Hons) Sports Coaching and Development

BSc (Hons) Football Coaching and Performance

BSc (Hons) Football Coaching, Development and Administration

BSc (Hons) Football Coaching, Development and Administration (Top Up)

BSc (Hons) Rugby Coaching and Performance

BSc (Hons) Sport and Exercise Science

BSc (Hons) Sports Coaching and Performance (Top Up)

BSc (Hons) Sports Journalism

BSc (Hons) Strength and Conditioning

MA Leadership in Sport

MSc Advanced Performance Football Coaching

MSc Sport, Health and Exercise Science

MSc Sports and Exercise Medicine (online)

MSc Sports Coaching and Performance

## Teaching

- BA (Hons) Primary Studies with QTS
- BSc (Hons) Secondary Design and Technology with QTS
- BSc (Hons) Secondary Mathematics with ICT with QTS
- BSc (Hons) Secondary Mathematics with Science with QTS
- BSc (Hons) Secondary Science with ICT with QTS
- BSc (Hons) Secondary Science with Mathematics with QTS

## Youth and Community

- BA (Hons) Youth and Community Work\*
- BA (Hons) Youth and Community Work (Youth Justice)\*
- BSc (Hons) Childhood Studies (Top Up)
- MA Working for Children and Young People (Youth Work Initial Qualifying)

### DID YOU KNOW?

97% of our Teacher Training graduates are in employment or further study six months after graduating (Graduate Desination Survey 2016).

\* Foundation year available



USW Sport Park, Football Coaching Students

**97%**  
of our Sport graduates are in employment or further study within six months of graduation.

(Graduate Survey 2016)

# ONLINE COURSES

## Offered in Partnership with UNICAF

The University is committed to providing flexible study options for students. An integral part of our approach is the design, development and implementation of online courses and our commitment to help students develop excellent critical analysis, reflection, and problem-solving skills.

We have partnered with UNICAF, the leading platform for delivering online university degrees in Africa. UNICAF is responsible for the recruitment, admission, enrolment and support of online learners to the following University of South Wales courses:

- Master of Business Administration
- MA Education (Innovations in Learning and Teaching)
- LLM Laws
- BA (Hons) Business Studies (Top Up)
- MSc Public Health
- MSc Psychology

Studying online allows you to learn at your own pace in your home or place of work, at a time that's convenient for you.

You will have access to a range of online resources to support your studies and on successful completion of your online course, you will receive a University of South Wales award.

UNICAF

### CONTACT US

For more information about these online courses, how to apply, entry, fees and scholarships visit:  
[southwales.ac.uk/unicaf](http://southwales.ac.uk/unicaf)  
Call: +357 2275 8555

## Offered in Partnership with Diploma MSc

 Diploma MSc

The University has worked in partnership with Diploma MSc to successfully provide online postgraduate courses since 2010.

These courses have been completed by students from over 70 countries across the world and have received excellent recognition. Many courses are accredited by the RCGP (Royal College of General Practitioners) and HEART UK have approved the Preventative Cardiovascular Medicine courses. Diploma MSc also won 'Best Online Distance-Learning Programme' at the E-Learning Awards in 2015.

Diploma MSc's innovative method of online delivery enables you to achieve career progression from anywhere in the world. The flexible delivery gives you the freedom to complete your PgDip or MSc your way, while working around your existing full-time job commitments.

This means that our courses are perfect to expand your qualifications without having to take time out from your career.

The following PgDip/MSc courses are currently available:

- Acute Medicine
- Applied Health Economics
- Cosmetic Medicine
- Dermatology in Clinical Practice
- Diabetes
- Endocrinology
- Gastroenterology
- Genomic Medicine and Healthcare\*
- Leadership in Healthcare
- Medical Education
- Obesity and Weight Management
- Pain Management
- Preventative Cardiovascular Medicine
- Respiratory Medicine
- Rheumatology
- Sexual and Reproductive Medicine
- Sports and Exercise Medicine

### CONTACT US

For more information about these online courses, how to apply, entry, fees and scholarships  
Visit: [www.diploma-msc.com](http://www.diploma-msc.com)  
Call: +44 (0) 29 2068 2050

\* PgDip only

# PRE-UNIVERSITY AND ENGLISH STUDY AND PRE-SESSIONAL ENGLISH STUDY

The Centre for International English offers academic and pre-sessional English language programmes at a range of levels. These courses help international and EU students develop a wide range of skills, academically and socially, within the university environment.

All courses are delivered by fully qualified and professional teachers of the English language, who have broad experience of working with international and EU students. We are supportive of your academic needs and ambitions, and work closely with the University's academic faculties to make sure you get the best preparation and support for your studies. The programme you choose will depend on your level of English and academic qualifications.

The Centre for International English continues to support international and EU students even after their preparation course has finished. On consultation with your faculty, you may be able to attend weekly English language modules free of charge, to fully support you throughout your studies.

The University strongly recommends that you allow at least 10 weeks (300 hours of English) input to improve your English level by up to one (1.0) IELTS band (or equivalent).

All our fee-paying programmes are run at USW Pontypridd, Treforest, and are accredited by the British Council.



For more information on our English language courses, visit: [southwales.ac.uk/international-english](http://southwales.ac.uk/international-english)

## English Entry Requirements For undergraduate study

To study an undergraduate course, you will need a good command of English and be able to prove you have at least the equivalent of:

- IELTS 6.0 overall (with at least 5.5 in each component)
- IGCSE pass in English at grade C or above

## For postgraduate study

To study a postgraduate course, you will need a good command of English and be able to prove you have at least the equivalent of:

- IELTS 6.5 overall (with at least 5.5 in each component)

If you do not meet these language requirements, you may be eligible for one of our preparation courses: the Pre-sessional English Language Programme or International Foundation Programme.

## Pre-sessional English Language Programmes

These are 5, 10, 15, 20 or 25 week intensive English language courses for students holding conditional offers for programmes at the University of South Wales, but who do not meet the language requirements. The Pre-sessional English Language Programme improves your English and academic skills, and helps you communicate more effectively in an English-speaking environment.

## Entry requirements

Applicants must hold an offer for a course at the University of South Wales (foundation, undergraduate, or postgraduate levels). Applicants must also satisfy the English language requirements as detailed in the table below.

International (non-EU) applicants must hold a UK Visas and Immigration (UKVI) IELTS (taken at an approved UKVI centre).

For information on UKVI centres across the world, visit [www.gov.uk](http://www.gov.uk) or contact your country representative for further information.



"The teaching staff are lovely people. They were my first teachers in the UK and they helped me not only with English, but also with other issues I had when I first arrived as everything was so new."

**Ziwen Yao, China**  
10 week Pre-sessional English Language Programme and BA (Hons) International Business (Top Up)

Current English Language Level	Recommended Pre-sessional English Language Programme	Start Date	Tuition Fee
			2019/20
IELTS 3.5* or equivalent (with a minimum of 3.5 in all components)	25 weeks	Starts: 3 June 2019 Ends: 6 December 2019	£9,125
IELTS 4.0* or equivalent (with a minimum of 4.0 in all components)	20 weeks	Starts: 8 July 2019 Ends: 6 December 2019	£7,300
IELTS 4.5* or equivalent (with a minimum of 4.0 in all components)	15 weeks	Option 1 – Starts: 28 May 2019 Ends: 6 September 2019 Option 2 – Starts: 27 August 2019 Ends: 6 December 2019	£5,475
IELTS 5.0* or equivalent (with a minimum of 4.5 in writing and 4.0 in all other components)	10 weeks	Option 1 – Starts: 1 July 2019 Ends: 6 September 2019 Option 2 – Starts: 30 September 2019 Ends: 6 December 2019	£3,650
IELTS 5.5* or equivalent (with a minimum of 5.5 in writing and 5.0 in all other components) Or IELTS 6.0* or equivalent (with a minimum of 6.0 in writing and 5.5 in all other components)	5 weeks	Option 1 – Starts: 5 August 2019 Ends: 6 September 2019 Option 2 – Starts: Mon 4 November 2019 Ends: Friday 6 December 2019	£1,825

\*Students applying for a course requiring a higher IELTS score than 6.0 may require a longer pre-sessional English course.

Please note that the fees stated above are subject to change. For full terms and conditions, visit our website: [southwales.ac.uk/money](http://southwales.ac.uk/money)



USW Pontypridd

JOIN OUR FREE ENGLISH CLASSES WHILE YOU STUDY

# INTERNATIONAL FOUNDATION PROGRAMME, INTENSIVE ENGLISH (IFPIE)

This one-year programme has been designed for students who want to study at undergraduate level in the UK. Students are taught in small groups with a strong focus on developing academic English language skills, as well as subject-specific knowledge to the standard needed for undergraduate study.

## Entry requirements

Applicants need a valid, national school leaving certificate at an appropriate level and are also required to have a level of English equivalent to UKVI IELTS 5.0 with a minimum of 4.5 in all components. On successful completion of the IFPIE, students can progress to the first year of their University of South Wales undergraduate award. Progression routes include business, accounting and finance, law, humanities and social sciences (excluding English and creative writing), psychology, hotel and hospitality management, computing, and health and social care management. Please check with the University whether your chosen pathway is available.

## Modules

The IFPIE has four language skills modules. The Academic Writing module enables students to write a range of texts using an academic style and a level of accuracy that is appropriate to undergraduate study.

In Academic Reading and Academic Listening, students develop the skills and vocabulary necessary to cope with challenging academic texts and lectures. These three modules are studied alongside the Academic Study in the UK Context module, which teaches students to manage their time, solve problems, and use sources effectively in their academic work, as well as learning about the UK context in which they are studying.

Students also study pathway modules that are relevant to the subject area of their proposed undergraduate course.

USW Pontypridd, Treforest

**START DATE**

**23 September 2019**



"My course has small classes so we can communicate with our tutor very closely, and it is a great help for us. We read, write, and speak a lot to improve our English and our teachers are always happy to help us. This is a good opportunity to make our language and communication skills better."

**Aya Kubouchi, Japan**  
10 week Pre-sessional Programme and International Foundation Programme

# FEES FOR NON-EU STUDENTS

## 2019-2020

	Tuition Fee	Maximum Scholarship	Minimum Fee Payable
<b>Research Degrees</b>			
Full-time Research Fee	£13,900	-	£13,900
Part-time Research Fee	£6,950	-	£6,950
<b>Postgraduate Degrees</b>			
MBA/Legal Practice Course/PgDip Legal Practice Course	£13,700	£1,500	£12,200
MA/MSc*	£13,400	£2,000	£11,400
<b>Undergraduate Degrees</b>			
Degree*/HND/Foundation Degree Courses (per year)	£12,600	£1,500	£11,100
Degree Placement Year	£2,530	-	£2,530
BA and MBA Package (non-STEM)	£20,500	-	£20,500
BA and MA/MSc Package (non-STEM)	£20,000	-	£20,000
BSc and MA/MSc Package (STEM)	£20,500	-	£20,500
International Foundation Programme (IFP)	£7,800	-	£7,800
BSc (Hons) Aircraft Maintenance Engineering (Top Up)	£18,900	£2,250**	£16,650

STEM degrees are those in the areas of science, technology, engineering and mathematics. Please note that some courses may incur additional fees for equipment, studio time and field courses. Visit [southwales.ac.uk/money](http://southwales.ac.uk/money) for details.

Please note that the fees stated above are subject to change.

**Amount to pay:** Your offer letter states the amount of course fees you will need to pay. New students starting courses from 2019-2020 will benefit from fee protection for the duration of their studies. For the latest information visit: [southwales.ac.uk/international](http://southwales.ac.uk/international)

\*Please refer to course web pages for any additional field trip fees: [southwales.ac.uk/courses](http://southwales.ac.uk/courses)

\*\*Students from countries eligible for the Chancellor's International Development Scholarships (see page 41) may qualify for a scholarship of £3,750.

## SCHOLARSHIPS

worth up to £2,500 available to international students

### Scholarships

The University of South Wales is pleased to offer a range of scholarships to international students. Partial tuition scholarships of up to £2,000 per year are available on selected courses:

- For undergraduate courses, up to £1,500 per year
- For Masters courses, up to £2,000
- For MBA courses, up to £1,500

### Chancellor's International Development Scholarships\*

Undergraduate International Development Scholarships of £2,500 are available for students from the following countries:

- Bangladesh
- Brazil
- India
- Kenya
- Mexico
- Myanmar
- Nepal
- Nigeria

- Sri Lanka
- Thailand
- Uganda
- Zambia
- Tanzania
- Turkey
- Vietnam
- Zimbabwe

You will be automatically considered for a scholarship when we receive your application. You do not need to make a separate scholarship application. If you are successful, you will receive confirmation of a scholarship with your offer letter.

Scholarships do not apply to sponsored students or those studying a placement year, the IFP, or Pre-session English Language Programmes. Scholarships may be withdrawn if conditions of the scholarships are not adhered to. For more information about fees and scholarships, visit: [southwales.ac.uk/international](http://southwales.ac.uk/international)

### Commonwealth and Chevening Scholarships

The University of South Wales is a popular destination for Commonwealth and Chevening scholars and we are delighted to support these scholarship programmes. The University offers a number of general and partnership Commonwealth and Chevening scholarships. Visit [southwales.ac.uk/international](http://southwales.ac.uk/international) for more information.



"I would say life so far in USW is amazing. 24 hour library access, high-quality teaching staff and latest technologies have helped improve my study."

**Tawsif Chowdhury, Commonwealth scholar, Bangladesh, MSc Renewable Energy and Resource Management**

\*This scholarship would replace the standard £1,500 undergraduate scholarship.



"I chose to study in the UK because of the reputable education system. USW stood out because of its diverse modules as part of my course. I have received great support from the University and would recommend the UK and USW to any student both local and international."

**Grace Mungkaje Chevening Scholar, Papua New Guinea, MSc Forensic Audit and Accounting**

### Payment schedule of tuition fees

Students studying Pre-session English Language and International Foundation Programmes must pay the balance of fees in full before enrolment.

Students studying undergraduate and postgraduate courses must pay minimum 50% of fees before enrolment.

The following payment plans are available to undergraduate and postgraduate students:

1. An early payment discount of £300 may be available upon full payment of fees on/before enrolment. Terms and conditions apply.
2. Payment of the balance of fees by instalments over seven months.

For further information about payment schedule of tuition fees, including payment by Flywire, visit: [southwales.ac.uk/international](http://southwales.ac.uk/international)

### Extra information

- Fees are charged per academic year.
- Accommodation and living costs should be calculated separately.
- Students who are not UK citizens may not be eligible for government support for fees. If you are not a UK or EU citizen, you will be asked to pay the full tuition fee as quoted on your offer letter.

# FINANCES FOR NON-EU STUDENTS

## Living costs

South Wales offers great value for money. Food, entertainment, accommodation and other day-to-day costs are likely to be lower than in many other parts of the UK.

It is difficult to estimate how much it will cost you to live in the UK because so much depends on your personal lifestyle. UK Visas and Immigration (UKVI) suggests that students studying outside London should allow approximately £1,015 per month for living costs, compared to £1,265 per month for students studying in London. You will also need to consider any additional costs of travelling to and from your home country.

If you are planning on bringing your family to the UK, you will need to bring enough money to support them too. Please contact our Immigration and International Student Advice Team (IISA) who will be able to advise you on the financial requirements for UK visas. For more information on general living costs in the UK, visit [www.educationuk.org](http://www.educationuk.org). You may also find the International Student Calculator helpful: [www.studentcalculator.org.uk/international](http://www.studentcalculator.org.uk/international)

## Deposits and payments

A deposit must be paid before letters for a visa application are issued. This deposit will also secure your scholarship if relevant. Your offer letter will clearly outline methods of payment for your deposit and the balance of your tuition fees. There is also some useful information on page 41.

Refund of deposits or prior payment of fees will only be made if you can produce evidence that your visa was refused. Refunds will not be made under any other circumstances. Please note refunds may incur an administration fee.

We are committed to provide programme reports and other information to sponsors on request.

**SPONSORED  
STUDENTS**

"I run my own production company, called Papillonmexy, in Abuja, Nigeria, which employs five members of staff. My company was recently awarded a contract by the United States Ministry of Agriculture to produce a film on biotechnology in Nigeria. I am also a photographer and was employed as the official photographer for Tony Blair's visit to Nigeria in 2012. My MA directly prepared me for working in this industry."

**Emmanuel Okolo, Nigeria**  
MA Film Producing



# VISAS AND IMMIGRATION PROCEDURES FOR NON-EU STUDENTS

## Do I need a visa?

If you are a national of a country outside the European Economic Area (EEA), you will probably need a visa to study in the UK.

If you need to apply for a visa to come to the UK to study, it is important you visit and read the University's guide to visas and application processes: [southwales.ac.uk/international](https://southwales.ac.uk/international)

Once you have accepted an offer to study at the University of South Wales, you will be contacted by the University's Immigration and International Student Advice team (IISA). They will guide you through applying for entry clearance under Tier 4 (or any appropriate alternative immigration category). You can also contact the IISA team directly by e-mail: [international.advice@southwales.ac.uk](mailto:international.advice@southwales.ac.uk)

Please note: you can apply for a Tier 4 student visa up to three months before the start of your course. You will only be able to enrol on the course and at the university that the visa has been issued for, which has an agreed start date. Any changes to university or course start dates should be updated by getting a new visa before you leave your home country.

Tier 4 students are given a vignette (sticker in their passport) that covers 30 days and are given a letter stating the total length of leave granted. If you have a Tier 4 visa, you will need to bring the letter with you to collect a Biometric Identity Document (BID: visa card), that covers the rest of your course once you arrive in the UK. Please enter our Alternative Collection Number - 2HE492 - on your application to ensure your BID (visa) comes directly to the University instead of a Post Office. There is no

charge to do this. As part of ongoing support before you arrive, the University will automatically provide you with more information about how you collect your BID. You will not be able to fully enrol on your course and access your University student card without collecting your BID first.

Tier 4 students must pay an Immigration Health Surcharge (IHS) if their visa is for six months or more in the UK.

For information on the IHS charge and how this is paid, visit our website: [southwales.ac.uk/international](https://southwales.ac.uk/international)

If you want to bring family members to the UK with you as your dependants, visit the 'Bringing your family' section on our website for information and guidance: [southwales.ac.uk/international](https://southwales.ac.uk/international)



Alexander Delalu

Speak with our Immigration and International Student Advice team (IISA) in real time using our 'Ask an Adviser' chat facility at: [intsupport.southwales.ac.uk/ask/](https://intsupport.southwales.ac.uk/ask/)

USW Cardiff



## NEED HELP?

If you want advice on what and how to study, we have a team of professionals who can help you decide what's right for you.

Call us today:  
+44 (0)1443 654 450

## Tuberculosis screening

Before getting a visa, nationals from certain countries will need to be tested for tuberculosis (TB), and obtain a certificate that states they are free from infectious TB. The test includes having a chest X-ray at an accredited clinic or hospital run by the International Organisation for Migration. To check whether you need to obtain a TB certificate before you travel, check the Home Office website: [www.gov.uk/tb-test-visa](https://www.gov.uk/tb-test-visa)

## When your entry clearance (visa) has been issued

Check it carefully to make sure:

- Your name and date of birth are correct
- It clearly states that you are a student
- The sponsor licence number is identical to the one listed on your Confirmation of Acceptance for Studies (CAS) statement
- It starts on or before the date you want to travel to the UK

When considering your application for entry clearance (visa), the British Embassy,

High Commission or Consulate in your country should comply with the guidance, which you can access at: [southwales.ac.uk/intsupport/visa-lengths](https://southwales.ac.uk/intsupport/visa-lengths)

## The University's reporting duties under Tier 4 of the points-based system

International students are permitted entry to the UK under immigration laws for the purposes of study. The University is required to report to UK Visas and Immigration (UKVI) when international students holding a Tier 4 student visa:

- Do not enrol within the enrolment period (including not completing enrolment due to non-collection of a BID)
- Enrol, but do not adhere to designated University attendance monitoring procedures
- Permanently or temporarily stop studying (including discontinuing or suspensions of study)
- Make significant changes to their circumstances (such as the successful completion of a course earlier than expected, a change of course, or completion from home)

- Break the conditions of their permission to stay, such as working illegally or not leaving the UK when required



"The community of students at USW is multicultural, which means you mingle with people coming from different parts of the world. Wales itself is a place to be explored for its culture, tradition and beautiful landscape."

**Aboobakar Shahjahan, India**  
BEng (Hons) Aeronautical Engineering graduate

# FEES AND FINANCES

## 2019-2020

The University is proud to educate students from over 120 countries, and we want students from across the EU to know that they are welcome, and will remain welcome at the University.

Future funding arrangements with the EU will be determined in due course as part of the UK's discussions on its EU membership.

For further information, visit:

- University of South Wales: [southwales.ac.uk](http://southwales.ac.uk)
- Universities UK: [www.universitiesuk.ac.uk](http://www.universitiesuk.ac.uk)
- UK Council for International Student Affairs (UKCISA): [www.ukcisa.org.uk](http://www.ukcisa.org.uk)
- Student Finance Wales: [www.studentfinancewales.co.uk/eu](http://www.studentfinancewales.co.uk/eu)

### Undergraduate (Bachelors) students

In the academic year 2019-2020, standard full-time fees for undergraduate awards are £9,000.

Most EU students are not required to pay the £9,000 fee upfront, as they can apply for a Tuition Fee Loan from Student Finance Wales. The current rules are that repayment of this loan will start only when you have graduated and are earning a salary above £25,000 per year in the UK, or the equivalent threshold set for the country you are working in.

For up-to-date information on our fees and the funding arrangements in Wales, visit: [southwales.ac.uk/money](http://southwales.ac.uk/money)

### Postgraduate (Masters) students

As a guide, the standard full-time Masters fee charged during 2018-2019 was £6,000. Please visit our course pages for up to date information for 2019.

As an EU student you may be able to apply for a Postgraduate Loan from the Student Loans Company. For more information about the loan, visit: [southwales.ac.uk/money](http://southwales.ac.uk/money)

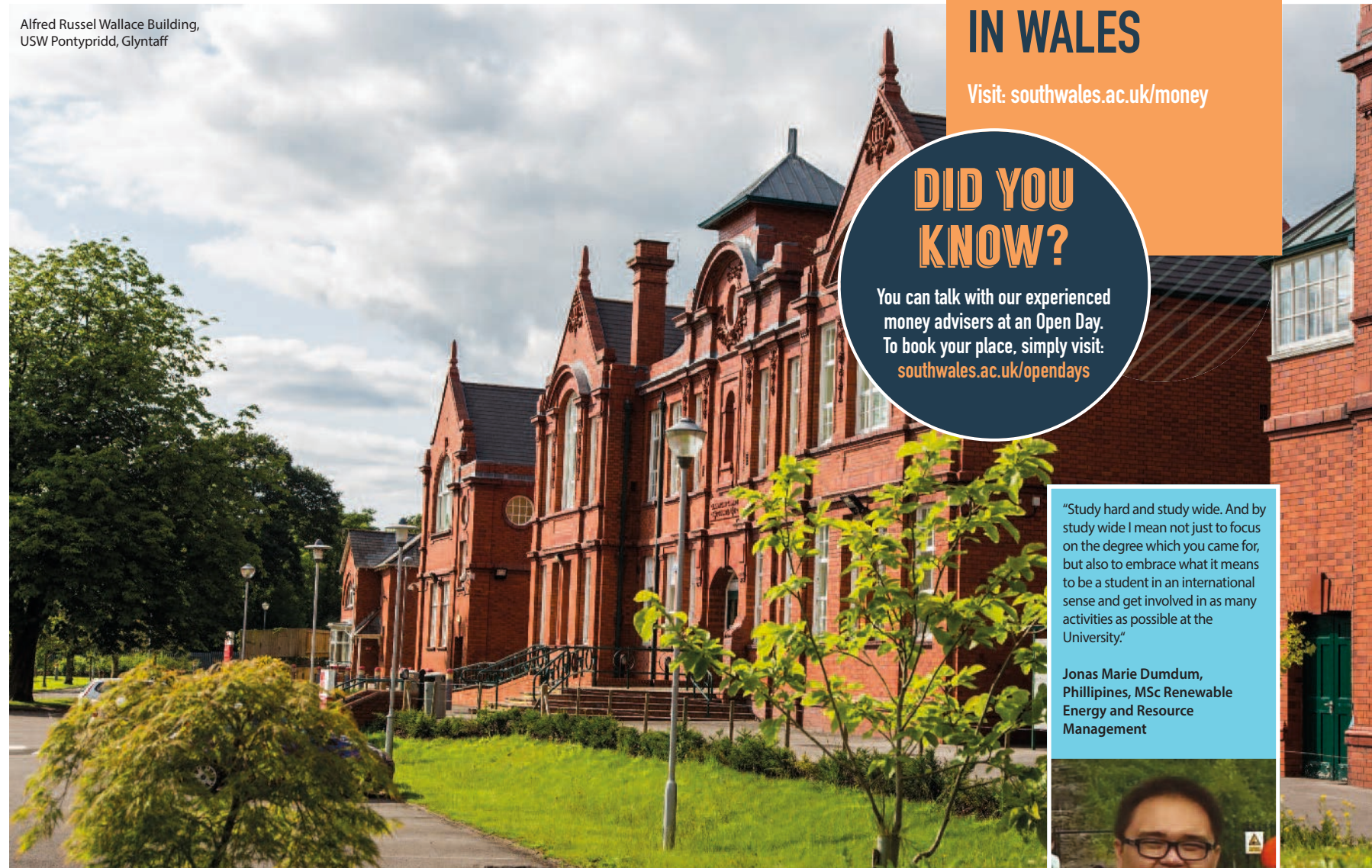
### Scholarships and bursaries

The University is committed to providing financial help and support to students during their studies. Information is available on our website, please visit: [southwales.ac.uk/money](http://southwales.ac.uk/money)

### Living costs

South Wales offers great value for money. Food, entertainment, accommodation and other day-to-day costs are likely to be lower than in many other parts of the UK. For information on general living costs in the UK, visit [www.educationuk.org](http://www.educationuk.org). For information on fees, funding, scholarships and living costs in Wales, visit: [southwales.ac.uk/money](http://southwales.ac.uk/money)

Alfred Russel Wallace Building,  
USW Pontypridd, Glyntaff



## FEES, FUNDING, SCHOLARSHIPS AND LIVING IN WALES

Visit: [southwales.ac.uk/money](http://southwales.ac.uk/money)

### DID YOU KNOW?

You can talk with our experienced money advisers at an Open Day. To book your place, simply visit: [southwales.ac.uk/opendays](http://southwales.ac.uk/opendays)

"Study hard and study wide. And by study wide I mean not just to focus on the degree which you came for, but also to embrace what it means to be a student in an international sense and get involved in as many activities as possible at the University."

Jonas Marie Dumdum,  
Phillipines, MSc Renewable  
Energy and Resource  
Management



Terms and conditions apply to scholarships. The University reserves the right to limit the number of scholarships available in the event of changes to the fee and student support regime in Wales. If such a change is necessary, all scholarship recipients will be notified by e-mail. For the latest information on fees and scholarships, visit: [southwales.ac.uk/money](http://southwales.ac.uk/money).



# HOW TO APPLY



USW Pontypridd, Treforest

## Making your application

### Academic qualifications

The University recognises a range of entry qualifications from around the world. For country-specific requirements, visit: [southwales.ac.uk/international](http://southwales.ac.uk/international)



"I applied to study at the University of South Wales because the programme allows me to get a Bachelor's degree in one year and the living expenses here are much lower than many other regions in the UK."

Feifei Zhu, China  
BA (Hons) Finance and Investment (Top Up)

### English language entry requirements

Proficiency in the English language is essential, and the University recognises the following English language qualifications:

- An IELTS with an average overall score of 6.0\* with a minimum of 5.5 in each component for undergraduate study, and an average overall score of 6.5 with a minimum of 5.5 in each component for postgraduate study
- IGCSE pass in English at grade C or above
- Equivalent country-specific English qualifications are also considered on an individual basis

For further information, visit: [southwales.ac.uk/international](http://southwales.ac.uk/international)

\*Courses below undergraduate level will require a UKVI IELTS taken at an approved UKVI centre. Please note we offer pre-sessional courses for students whose IELTS is below requirement. See pages 36-37 for further information.

### Considering your application

You will need to submit as many of the following documents as possible with your application:

- English language certificates
- Results from high school or university qualifications (certificates and transcripts)
- Academic reference
- Personal statement

### Education counsellors

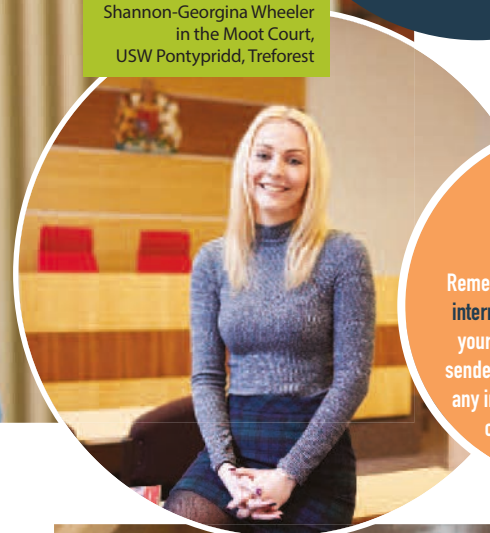
Our International and EU Student Recruitment Team will be able to provide you with information about our courses and facilities at the University (see pages 6-7).

You can also contact us for details of our representatives in your country who will be able to help you.

## APPLICATIONS

Each application is considered on an individual basis. If you have other qualifications or relevant work experience, please contact us to discuss your application.

Shannon-Georgina Wheeler  
in the Moot Court,  
USW Pontypridd, Treforest



## DON'T FORGET

Remember to add our email address [international@southwales.ac.uk](mailto:international@southwales.ac.uk) to your e-mail address book or safe senders list – you don't want to miss any important information or offers of study we may send you.



From the left: Back: Zak Lichniak, Cath Woodward, Jo Allen  
From the left: Front: Anneli Stephens, Siobhan Jones, Matthew Davies  
International and EU, Enquiries and Admissions Team

## What happens next?

1

Visit [southwales.ac.uk/international](http://southwales.ac.uk/international) to research our courses, fees and scholarships.

2

Contact our Admissions Team ([international@southwales.ac.uk](mailto:international@southwales.ac.uk)) or one of our representatives in your country to discuss any questions you may have – visit our country pages at: [southwales.ac.uk/international](http://southwales.ac.uk/international)

3

Apply for your course online, using the My USW online portal: [southwales.ac.uk/apply](http://southwales.ac.uk/apply)

4

Receive a decision; we aim to respond to your applications within 10 working days.\*

5

If your offer is unconditional, you would need to decide whether you would like to accept the offer.

If your offer is conditional, you can still accept. Once your conditions are met, please send us your documents and we'll update your offer.

6

If you have any questions throughout your application process, please contact us.

\*A decision will take longer for courses that require an interview

## CONTACT US

If you have any questions or queries in relation to your application, please contact the International and EU Enquiries and Admissions Team:  
Tel: + 44 (0)1443 654 450 or email: [international@southwales.ac.uk](mailto:international@southwales.ac.uk)

# YOUR HOME FROM HOME

Where you live is just as important as what you learn. Whether you want to live in Halls of Residence on campus or in a privately rented house, we'll help you feel right at home.

Living in Halls is a great way to meet people and make new friends. If you choose Halls of Residence, you'll be close to the library, lectures and the Students' Union, plus you won't have to budget for travelling costs. We've got lots of accommodation options, so you can choose what suits you best.

## Pontypridd

The University has Halls at USW Pontypridd, so you can live and study in a friendly, community atmosphere that our students love. Not only is it convenient, but it's competitively priced too.

There are nearly 1,200 en suite rooms of different sizes, and 20 self-contained studio flats. All our accommodation is self-catering, so each kitchen is well-equipped with microwaves, ovens, toasters and fridges. As a campus resident, you can head to The Hub for social events like cooking lessons and curry nights, or organise your own with your flatmates.

## Cardiff

In Cardiff, we work with private provider, Liberty Living, to offer you rooms in their Halls of Residence. These en suite rooms are right in the city centre – one of the Halls is directly opposite the ATRIUM building at USW Cardiff.

## Newport

In Newport city centre, the University has teamed up with private provider, CLV, to offer modern Halls of Residence very close to USW Newport and overlooking the River Usk. There are six room packages to choose from. If you'd like some extra space, there are studio flats available too.



"I live in Halls on campus. It is convenient as it's very close to my classes, library, Students' Union, and Sport Centre."

**Sharif Khoshnaw,**  
Chevening scholar, Kurdistan,  
MSc Renewable Energy and Resource  
Management



Halls of Residence,  
Newport

TAKE A  
LOOK  
AROUND

Take a look at our 360° tours and videos online:

[southwales.ac.uk/accommodation](http://southwales.ac.uk/accommodation)



Mountain Halls, USW Pontypridd



Mountain Halls, USW Pontypridd

En-suite facilities

Newport Student Village, Newport City Centre

Liberty Living: Liberty Bridge, Cardiff



"I live in private, shared accommodation, a short walk from the Pontypridd Campus, so it's very convenient for me. The place is so nice with facilities that allow me to prepare my own traditional meals. It's like home away from home!"

**Kudakwashe Magura,**  
Chevening scholar, Zimbabwe,  
MSc Engineering Management

## Accommodation Services

We'll tell you how to apply for a room as part of the University application process.

Applications for accommodation for 2019-2020 will close on 28 June 2019. Find out more online: [southwales.ac.uk/accommodation](http://southwales.ac.uk/accommodation).

If you don't want a place in Halls, we can discuss other options and help you find the right place to live. We keep a database of local authority-registered landlords whose properties meet the legal minimum standard and safety regulations. Visit: [southwalesstudentpad.co.uk](http://southwalesstudentpad.co.uk).

## How will I pay?

International students are expected to pay Halls rental in full at the beginning of the academic year.

EU students are expected to pay Halls rental for Newport and Cardiff campuses in full at the beginning of the year, unless they have a UK guarantor.

Students staying in a privately rented house should refer to their contract for payment details.

# WHAT WILL I GET FOR MY MONEY?

## Pontypridd Halls

- From £92.96 per week (attic or basement ensuite rooms)\*
- Own room with en suite shower room and toilet
- Shared kitchen and dining area with five other people
- Fast-speed internet access
- Bills included
- Insurance for personal belongings
- 24 hour security system

## Cardiff Halls

- From £115 per week\*
- Own room with ensuite shower and toilet
- Shared kitchen, dining and living area
- Internet access
- Shared common room with TV and pool table
- Bills included
- 24 hour security system

## Newport Halls

- From £96 per week\*
- Own room with ensuite shower room and toilet
- Shared kitchen and common room with Sky TV
- Fast-speed internet access
- Bills included
- Insurance for personal belongings
- 24 hour security system

## Privately rented house

- From £50 per week\*
- Own bedroom
- Shared kitchen, bathroom and lounge, usually with three to five others
- Bills not included (approximately £15 per week)

All Halls have coin-operated laundry facilities and are staffed 24 hours a day.

\*Please check our website for the latest information.

# USW SPORT

USW Sport has some of the best facilities in the UK, offering clubs, courses and qualifications.

USW Sport is for everyone – there are plenty of ways to get active, keep fit and stay healthy while you study here.

The Sport Centre at USW Pontypridd has a huge main hall, a gym with entertainment while you train, and the latest integra machines for use by wheelchair and able-bodied users.

There are also squash courts, a climbing wall, a large free weights room, sauna and steam room, and a studio for dance and martial arts. There are daily fitness sessions too, with zumba, spin, kettlebells and pilates on offer.

Students who live or study in Newport or Cardiff can use sport facilities at Pontypridd, but we've also arranged discounted rates with gyms and health clubs in Cardiff. Plus, USW Newport is right opposite the Newport Centre, which has a pool, fitness centre, health suite, sports hall, and a fantastic student deal.

## REPRESENT USW AT ONE OF THESE SPORTS

- lacrosse • tennis • ultimate frisbee • archery
- mountain biking • swimming • golf • surfing
- sailing • canoeing • archery • water polo
- snowsports • shooting • futsal • and many more

For a full list, visit: [southwales.ac.uk/sport](http://southwales.ac.uk/sport)



USW Basketball

"The gym offers great sporting equipment and instructional courses such as yoga, pilates, kick boxing, archery and rock climbing."

Crystal Jia Yee Foo, Malaysia, MChiro



## TRY SOMETHING TOTALLY NEW AND ENJOY THE SOCIAL SIDE OF SPORT



Our full-size indoor 3G pitch built to the Fifa Pro standard and World Rugby 22 standard

### Play Sport

What's on offer goes way beyond weights and equipment. You can enjoy the social side of sport or try something totally new. From indoor climbing to yoga, archery and everything in between, there's sure to be something you'll enjoy.

Going to university doesn't mean giving up the sports you love either. USW Sport has over 45 teams that compete in the British Universities and Colleges Sport (BUCS) leagues. You'll train and play matches at the Sport Centre at USW Pontypridd or at USW Sport Park.

## JOIN OUR TEAM

Come to an Open Day or watch our video to find out how:  
[southwales.ac.uk/sport](http://southwales.ac.uk/sport)

### Sport qualifications

USW Sport also provides academic courses, from Foundation degrees to PhD research. Alongside these, we offer National Governing Body coaching awards to all students. These awards and work experience will put you in a strong position for a range of employment opportunities, even for careers outside sport.

### Performance Sport Programme

The Performance Sport Programme aids the development of talented student athletes while they study. Focus Sport helps students achieve excellence in their sport, and there are scholarships for students who compete nationally or internationally and represent the University in one of the BUCS sports.



The University of South Wales, Cardiff University and Cardiff Metropolitan University have formed the Cardiff/USW Institute Centre for Cricketing Excellence. It's one of only six centres in the UK where the best young cricketers can combine higher education with their sporting development.

# USW SPORT PARK

USW Sport Park is one of the best university sport coaching and training venues in the country. It's just a five minute drive from USW Pontypridd or you can take the free shuttle bus.

Thanks to continued investment, our students now have even more first-class facilities. We have a brand-new specially designed sporting performance facility that focuses on rugby and football coaching. It includes a specialist centre for strength and conditioning with 12 lifting platforms, providing a high performance environment for aspiring athletes. Our full-size indoor 3G pitch is built to the Fifa Pro standard and World Rugby 22 standard. It will guarantee training all year round for our rugby, football and coaching students. We are the only university in England and Wales to offer this facility.

You'll also find a notational analysis suite and over 30 acres of playing fields, including five floodlit pitches. We have a sand-dressed 'astroturf' pitch, as well as a full-size FIFA approved 3G pitch. In addition to these all-weather pitches, there are six grass football pitches, three grass rugby pitches, and a large changing pavilion.

Our facilities are regularly used by international professional teams, such as the Wales national football team and Cardiff City Football Club, as well as the touring New Zealand, South Africa and Australia rugby squads. This demonstrates the high quality of our pitches and the versatility of our equipment.

# YOUR STUDENTS' UNION

The Students' Union plays an important part in the life of every student, and it's much more than a place to party.

The SU is where you can seek advice, play sport, make new friends, find work and have your voice heard. That said, there's plenty happening when it's time to put your studies aside and relax!

With Union facilities across the University, we're always here for you. You automatically get membership of the Union and you can enjoy what's on offer at any USW location, no matter where you study.

The Union offers a wide range of services and activities:

## Social life

There's no shortage of entertainment at the Union. In a warm and friendly atmosphere, you can watch live sport on the big screen, enjoy a meal, grab a coffee, or just take a break and relax. And things pick up when the sun goes down – from live bands and pub quizzes, to film screenings and theme nights: [uswsu.com/events](http://uswsu.com/events)



Freshers' Fair, USW Pontypridd

## Clubs and societies

Whatever your passion, from human rights to snowboarding or pizza, there's a club or society for you. If you join a club or society, you'll meet lots of new people and get involved in all sorts of activities, from demonstrations and day trips to nights out and parties. If there isn't a society for your activity, simply find enough like-minded people and set up your own!

Most importantly, you'll get more out of your time at University – it's a chance to try something completely new or keep up interests you have already. Plus, if you get elected to a committee, the skills you'll gain will be good for your CV. Find out more at: [uswsu.com/societies](http://uswsu.com/societies)



"There are so many societies and clubs available for international students. I have met some awesome friends from all over the world and got to know the differences among cultures and religions."

Lam Thanh Sang, Vietnam  
BA (Hons) International Business (Top Up)

**ACCESS  
ALL AREAS**

Visit [uswsu.com](http://uswsu.com)  
for a look at Union life.



Students' Union, USW Pontypridd

## Employment

If you want some extra cash, you can mix business with pleasure. The Union needs staff for lots of roles, such as bar work or courier. You can find vacancies at: [uswsu.com/jobs](http://uswsu.com/jobs)

## DID YOU KNOW?

If things get on top of you, the Nightline service can help. You can talk through your problems with trained student volunteers to find solutions that will work for you.

## Get involved

We are a democratic organisation independent of the University and run by students, for students. Every year a team of Executive Officers are elected by the student body to represent and guide the Students' Union. The Executive Officers work together with a team of dedicated part-time Officers, student reps and staff to make sure you get the most out of your education and student experience.

## Welfare

University is a fantastic experience, but being a student can be completely different from the life you led before and it's understandable if you have a few problems along the way. But you don't have to get through it alone – whether your problem is financial, emotional or educational, the Welfare Service is here to listen and support you.



Students' Union, USW Pontypridd

# FOCUS ON YOUR CAREER

It's never too early to think about what you want to do after university.  
Most students go to university to prepare for a successful career.  
So, we've made your future priority our priority.

## Careers and Employability Service

Our Careers and Employability team can offer a wide range of services to make you more employable. We'll help you consider your career options and develop the skills and experience you will need to be successful in the graduate employment market. We also offer practical help with finding work placements, completing job applications or practising interview techniques.

Simply call in to the Careers and Employability Service at any time to use the resources. If you're too busy to come and see us, you can access these resources online whenever suits you. You can find out about new vacancies, careers workshops and networking events, get updates on work placements, or search our employer directory for opportunities.

Visit [southwales.ac.uk/careers](http://southwales.ac.uk/careers) to see what we offer and what our students have to say.

## Courses for the real world

Some of our courses have a year of work experience, called a 'sandwich year', built in – just check the study options next to each course online. It's a great opportunity to spend time in the workplace to understand what is required of new graduates, and to gain relevant experiences to talk about at interview.

Our links with industry in the UK and overseas mean that what you learn on your course is informed by actual practice and reflects real-life trends. Many courses also hold accreditations by professional bodies, which demonstrates that course content meets industry standards. See page 19 for further details.



"One of the most important things my course has taught me is how the animation industry works in Europe. It has really helped me prepare for my professional life. The internships have made me more ambitious about what I would like to do after graduation; I would like to become a director and produce my own films. The experience of studying here has really helped me on my path to achieving this."

Mario Quinones, Chile  
MA Animation

# EMPLOYER LINKS

We work with employers across all industry sectors to link students with graduate and placement opportunities.

Thousands of jobs and placements are posted on our vacancy system each year and over 400 employers visit USW to meet students at our careers fairs and networking events. Here are just some of the companies we work with:

- ACCA • Admiral
- Airbus Defence and Space
- Amazon • BBC • BT
- Capgemini • Capital Law • CIPFA
- Deloitte • Enterprise Rent-A-Car
- Fujitsu • GE Aviation Wales
- General Dynamics • GM Financial
- Government Statistical Service
- Hilton • Hugh James Solicitors
- Japan Exchange and Teaching (JET) Programme • Legal and General
- L'Oréal • National Museum Wales
- Network Rail • NHS Wales
- Office for National Statistics
- Peacocks • PriceWaterhouseCoopers
- Qatar Airways • Rolls-Royce
- Royal Air Force • Royal Navy
- South Wales Police • Tata Steel
- Wales Audit Office
- Welsh Government
- Welsh Rugby Union (WRU)
- Willmott Dixon Construction

Visit our website for a full list and to find out more: [southwales.ac.uk/careers](http://southwales.ac.uk/careers)



Get Experience. Be Distinctive.  
Achieve an Edge for Employment.

## Grad Edge Award

At the University of South Wales, we want our students to hit the ground running in the graduate labour market, so we created the Grad Edge Award to help develop your mindset, skills and attributes.

## Freelancing and business start-up support

If you wish to develop your skills, knowledge and experience to develop a business idea, then Student Enterprise is here to help. Support includes a range of events, activities, workshops, funding and mentoring to help get your ideas off the ground.

If you are looking to set up a business in Wales, then Student Enterprise can support the development of your Tier 1 Graduate Entrepreneurship Visa application. You can also apply for the opportunity to pitch for up to £1,000 in BID and/or take part in the annual USW Freelancers Academy. Visit: [southwales.ac.uk/enterpriseusw](http://southwales.ac.uk/enterpriseusw) to find out more.



Students celebrating business start-up success following completion of the USW Freelancers Academy

## USW Exchange

The Exchange aims to develop the relationship between academia and industry. It helps you gain the personal skills and awareness needed in the workplace. The Exchange is an education scheme, where a group of students can participate in a 'consultancy firm' to provide advice for our clients. Students get to the root of the problem, resulting in a detailed report and presentation of their recommendations.

Benefits of working with The Exchange

- Opportunity to gain industrial experience
- Apply theoretical knowledge to practice
- Develop effective communication skills
- Enhance your Curriculum Vitae (CV)

## Network75

Subject areas that take part in Network75 are engineering, surveying, computing, business, accounting, law and chemistry. EU students are eligible to apply for the Network75 scheme, which combines work and study to improve your employability. Network75 students are in University for two days each week and in work for the other three.

There's a host of financial benefits and 100% employment rate too. All Network75 students have been offered jobs by their host companies on graduation, often at a level higher than other graduates. To find out more and apply online, visit: [southwales.ac.uk/network75](http://southwales.ac.uk/network75).

# YOUR CAREER COUNTS

[southwales.ac.uk/careers](http://southwales.ac.uk/careers)



USW Pontypridd

# HIRING!

Why not become a student ambassador at the university? Our students work closely with staff at events to tell others about their experiences at University. You can gain valuable work experience, have fun and get paid! Find out more at:

[www.southwales.ac.uk/ambassadors](http://www.southwales.ac.uk/ambassadors)

# SUPPORTING YOU AND YOUR STUDIES

Student services are here to help your time at USW run as smoothly as possible. For information or advice, whatever the issue, there's a network of people ready to help.

## Immigration and International Student Advice

Our Immigration and International Student Advice team (IISA) are experts in immigration law and rules. They offer specialist advice and information for EU and international students and their dependants. They are also dedicated to the welfare of international and EU students. They will make sure you have the help and support you need before you arrive and during your studies IISA staff can help you with any non-academic, welfare-related issues such as visa extensions, employment regulations, orientation and adapting to a new culture.

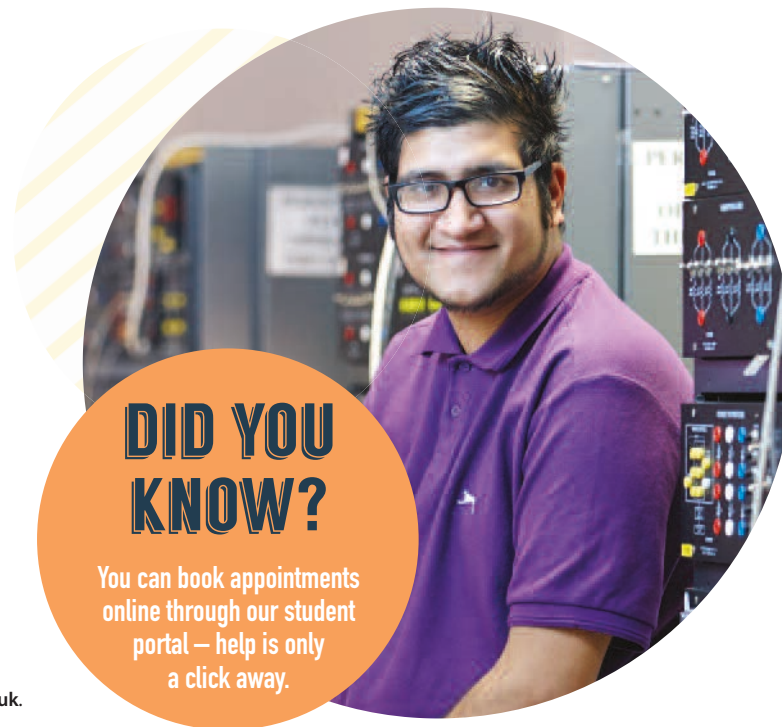
The International Zone is based at USW Pontypridd, Treforest, and the team offers drop-in sessions and surgeries across all campuses. The IISA team works closely with the Students' Union and international student societies to support and promote activities for international students. For more information: Visit: [southwales.ac.uk/intsupport](http://southwales.ac.uk/intsupport) or e-mail: [international.advice@southwales.ac.uk](mailto:international.advice@southwales.ac.uk).

## Arrival services

To make your travel arrangements to the University as easy as possible, the University organises arrival services for when you first arrive in the UK. These services are available throughout the year from Cardiff International Airport (CWL) and Heathrow Airport (LHR), London.



We recommend you arrange your flight to land at Cardiff International Airport (CWL). On request, we can arrange a free taxi service from the airport to your



accommodation at the University of South Wales. If you arrive at LHR, we can arrange for a University representative to meet you and help you with the rest of your journey to Wales. Please note, this is not a pick-up service and our representative will neither transport you nor travel with you to the University.

It is important to remember that you must request the arrival services at least five working days before you travel. For more information and a booking form, visit: [southwales.ac.uk/arrivalservices](http://southwales.ac.uk/arrivalservices)

"Studying at the University of South Wales has allowed me to adapt to a multicultural environment. Through meeting and making friends from different countries, cultures and backgrounds, I feel I have developed into a well-rounded individual."

**Filipe Galamba, Portugal**  
MA Journalism

USW Cardiff

## DID YOU KNOW?

You can download a free Blackboard app and keep up-to-date with all your study materials on the go. Or download it to your tablet and save lots of money on printing!



## Library and learning support

As well as the great facilities for your subject, you'll use the latest technologies to enhance your studies. We have virtual learning systems and you'll experience some of your learning through these, and you can access your course materials anytime and anywhere through Blackboard.

## Student development and study skills

At university you'll need to become an independent and effective learner, so we offer support to help you get the most from your studies. Our study skills tutors offer informal tutorials and drop-in sessions in a friendly and relaxed environment. You can get one-to-one advice or attend workshops on specialist topics. We also offer a wide range of self-study materials at each campus and online.

## Award-winning online support

USW has an award-winning web portal called 'UniLife', where you'll find all the information you need for student life. There's the latest news and events, a comprehensive directory of student information, access to e-learning, study tools and student job listings.

## Postgraduate Centre

A spacious, open-plan, social learning area dedicated to postgraduate students at USW Pontypridd. The centre has study areas, Wi-Fi, computer facilities, a cafe area, and small meeting rooms.

## The Wellbeing Service

The University's Wellbeing Service offers a professional, confidential counselling service and mental wellbeing support for students. There's also Nightline, which is a telephone helpline for students during term-time, while our website has lots of alternative sources of help: [southwales.ac.uk/wellbeing](http://southwales.ac.uk/wellbeing)

## Money advice

We have experienced staff who can advise you on any aspect of student finance, from fees and scholarships to budgeting.

## Health services

Our nurse-led University Health Service offers walk-in services with a wide range of advice and referral options. For details about what non-EU students should do before coming to the UK to study, visit: [southwales.ac.uk/international](http://southwales.ac.uk/international) or [www.ukcisa.org.uk](http://www.ukcisa.org.uk).



## Disability and Dyslexia Service

The Disability and Dyslexia Service offers support, advice and assistance to students with a disability or specific learning difficulty. Please contact us before enrolment to discuss any support requirements. For more information, e-mail [ddsadvisor@southwales.ac.uk](mailto:ddsadvisor@southwales.ac.uk) or visit: [southwales.ac.uk/disability](http://southwales.ac.uk/disability).



## Religion

The University welcomes students with different cultures and faiths from over 120 countries. The Chaplaincy is rooted in the Christian tradition, but is an inclusive service and gives support to people of all faiths and none. Prayer facilities are available at all of our campuses and the chaplaincy staff can help you with any questions you have about practising your faith. For more information, e-mail [chaplaincy@southwales.ac.uk](mailto:chaplaincy@southwales.ac.uk) or visit: [southwales.ac.uk/chaplaincy](http://southwales.ac.uk/chaplaincy).

# INTERNATIONAL WELCOME PROGRAMME

## What is the International Welcome Programme (IWP)?

The IWP is a special orientation programme that has been running just for international and EU students each September and February for over ten years. IWP is primarily a social programme that allows students to settle in, make friends and get used to being in the UK before their compulsory academic faculty induction and enrolment, which happens the following week.

## What sort of activities are included?

There are a wide range of trips and activities on offer and each student can build their own personalised programme based on their needs and preferences. All students attend a compulsory welcome session and can then choose optional information sessions, including:

- Living and learning in the UK
- Keeping safe under Tier 4
- Driving in the UK

Activities vary from treasure hunts to cooking demonstrations, picnics to quizzes and city walks to guest lectures from local historians. There are also opportunities to learn new skills such as world dance, Zumba or drumming!

You can visit local attractions, hear a professional Welsh storyteller, have a go at karaoke, watch a film and even show off your talents at a production.

Whether you like to party or you prefer something a little quieter – there will be something for everyone. As well as all the fun activities, there will also be staff and current students here to show you around the campuses, help make sure you have somewhere to live, and assist with opening a bank account.

## Why should I take part in the IWP?

The IWP is designed to help students with their transition to the UK and make the process easy and enjoyable. You will have an opportunity to meet plenty of new students who have the same concerns, as well as students who have been here a while and can share their own experiences. The IWP ensures you are fully prepared and settled before starting your academic journey.

## How much does it cost?

Registration and most of the activities are free, though there is a small charge, usually less than £5, for some of the optional coach trips and meals.

## HOW DO I SIGN UP?

Being part of the IWP couldn't be easier. Visit [southwales.ac.uk/international](http://southwales.ac.uk/international) for further information and an online booking form.



International Welcome Programme students visit Cardiff Bay and boat trip



"When I arrived in Cardiff, I didn't know what to expect. However, it only took me a short time to adapt to my new life, thanks to the support I got and the friends I met during the International Welcome Programme."

Alma Ramirez, Mexico  
MA Scriptwriting

# USW ALUMNI

The benefits of being a University of South Wales student extend way beyond your new qualification and last much longer than your course.

As a graduate you automatically become a lifetime member of the University and join a global network of over 200,000 alumni in more than 120 countries. From becoming a mentor and receiving our monthly e-bulletin, to reunions and taking part in international group activities, there are plenty of ways to stay connected.

Alumni regularly return to campus as guest speakers, facilitate opportunities with industry and provide advice to students who are thinking about enrolling at the University. Our alumni are a dynamic and growing community – whether you're based in Cardiff or Calcutta, Manchester or Mexico City, there are opportunities to network the world over.

You could also join us for our Big Weekend event held each June. This is an opportunity for a reunion back in south Wales, or at sister events held across the world, ensuring alumni continue to feel part of USW's global community.

Search for USW Alumni on Facebook, Twitter and LinkedIn, or visit: [southwales.ac.uk/alumni](http://southwales.ac.uk/alumni)



Alumni Event, Mexico



Alumni event, Malaysia

# INTERNATIONAL PARTNERSHIPS

The University of South Wales has numerous collaborative partnerships across the world, in a range of subject areas and disciplines.

The nature of these partnerships is varied and includes research, staff and student exchange, online, direct and joint delivery of University courses, bespoke training and other projects.

From logistics and supply chain management to business, computing, construction project management, special education needs, mechanical engineering and civil engineering, our portfolio of international activity is diverse and relevant to current market needs.

If you're interested in studying a University of South Wales course overseas with one of our partners, or are an overseas institution interested in exploring opportunities for collaboration with us, please contact the University at: [intpartnerships@southwales.ac.uk](mailto:intpartnerships@southwales.ac.uk)



Maria Fernandes  
International Partnerships  
Manager

# USEFUL CONTACTS

If you've read this booklet and have any questions or need further information, now is the time to contact us. Below is a list of contacts who can help you.

## General enquiries

Call: +44 (0)1443 654 450  
Email: [international@southwales.ac.uk](mailto:international@southwales.ac.uk)  
Visit: [southwales.ac.uk/international](http://southwales.ac.uk/international)

## Application enquiries

Call: +44 (0)1443 654 450  
Email: [international.admissions@southwales.ac.uk](mailto:international.admissions@southwales.ac.uk)

## Immigration, meet and greet

Immigration and International Student Advice  
Call: +44 (0)1443 482 083  
Email: [international.advice@southwales.ac.uk](mailto:international.advice@southwales.ac.uk)  
Visit: [southwales.ac.uk/arrivalservices](http://southwales.ac.uk/arrivalservices)

## Accommodation enquiries

Call: +44 (0)1443 482 044  
Email: [accom@southwales.ac.uk](mailto:accom@southwales.ac.uk)  
Visit: [southwales.ac.uk/accommodation](http://southwales.ac.uk/accommodation)

## Additional contacts

Education UK  
Call: +44 (0)161 957 7755  
Visit: [www.educationuk.org](http://www.educationuk.org)

## UKCISA – UK Council for International Student Affairs

Call: +44 (0)207 788 921  
Visit: [www.ukcisa.org.uk](http://www.ukcisa.org.uk)

## UK coach enquiries

Visit: [www.nationalexpress.com](http://www.nationalexpress.com)

## UK rail enquiries

Call: +44 (0)207 278 5240  
Visit: [www.nationalrail.co.uk](http://www.nationalrail.co.uk)



USW Cardiff

[southwales.ac.uk/international](http://southwales.ac.uk/international)



USW international students



This guide provides general guidance and does not form part of any contract. The information given has been produced well in advance of delivery of the courses outlined for students due to enter the University during the 2019-20 intake. While it is believed to be correct at the time of going to press, our website should be checked for the latest position. The University reserves the right to amend or discontinue courses, or alter facilities, as a response to circumstances beyond its control but will otherwise endeavour to respond to change by consulting with those affected and/or taking remedial action to help them.

Coast image on page 9, Cardiff Bay images on page 13, provided by Thinkstock, Cardiff shopping arcade image on page 12 provided by Nick Andrews; Brecon Beacons image on page 8: CT Aylward, Getty Images.

Produced by the University of South Wales's Marketing and Student Recruitment department.

Designed by USW Print and Design  
[www.uswprintanddesign.co.uk](http://www.uswprintanddesign.co.uk)

Printed by AST Print Group  
[www.astprint.com](http://www.astprint.com)

The University of South Wales is a registered charity. Registration No. 1140312