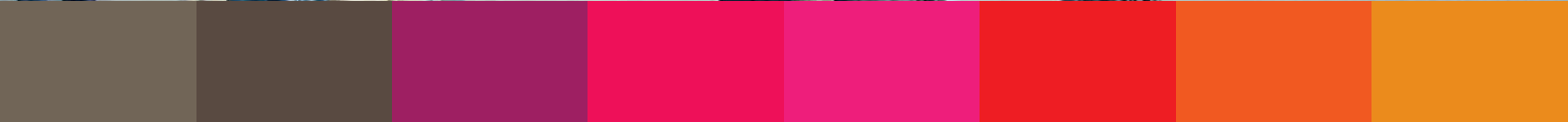


# International Student guide

[www.univ-paris-diderot.fr](http://www.univ-paris-diderot.fr)



# Welcome !

Dear students from around the world,

You have decided to come and study at Université Paris Diderot, the only multi-disciplinary university in Paris. Each year, around 6,000 foreign students register with Université Paris Diderot either individually or in the context of a mobility programme.

To make your arrival and integration within the university easier, we suggest that you start by preparing for the various administrative and educational formalities awaiting you before and after your arrival, not to mention the many services available on the university campus, now.

This guide is at your disposal to assist you in passing your courses at Université Paris Diderot.

***The International relations office***





## Welcome to Université Paris Diderot **pg. 5**

### Presentation of Université Paris Diderot

- A bit of background pg. 6
- Courses pg. 8
- Foreign students pg. 9
- International relations office (BRI) pg. 9

### Study organisation

- The LMD reform pg.10
- The European Credit Transfer System (ECTS) pg. 11
- The university calendar pg. 12

### How to register

- Registration at the university pg. 13
- Students registering individually pg. 14
- Students on mobility programmes p. 24

### Learning French

- Intensive course in French language and culture (SILC) pg. 26
- Semester courses in practicing French pg. 27
- The university diploma in French language and culture (DULCIF) pg. 28

## Living in Paris

### Administrative formalities

- Visas and residence permits pg. 32
- Social and medical cover pg. 35

### Financing your programme

- Grants from the French government pg. 38
- Specific programmes pg. 39
- CROUS (Student services) grants from the Ministry of National Education (MEN) pg. 40

### Working in France

- Legislation pg. 41
- Job vacancies pg. 43

### Accommodation

- Types of accommodation pg. 44
- Financial assistance for housing pg. 51

### Practical informations

- Routine expenses pg. 52
- University restaurants pg. 53
- Transport in Paris pg. 55
- Driving in France pg. 55

## Practical services

**pg. 56**



# Welcome to Université Paris Diderot



## Presentation of Université Paris Diderot

Université Paris Diderot is the only multi-disciplinary university at the heart of Paris, and can offer a wide range of courses and research options in 5 subject areas:

- the arts, literature and languages
- law, economics and management
- human and social sciences
- sciences, technology, health
- medicine, odontology

### A bit of background

---

**1970** : After the events of May 68, and in the context of the application of the Faure law, the prestigious University of Paris was divided into 13 independent universities.

Paris 7 was unique in that the university could already offer a fairly wide range of courses in several subject areas: Human sciences, Sciences and Health, etc.

**1994** : Paris 7 opted for Denis Diderot, the great philosopher of the Enlightenment (a remarkably open-minded and tolerant man, creator of l'Encyclopédie), as its emblematic figure to reinforce and promote its multi-disciplinary projects. Paris 7 university then adopted the name "Paris 7 - Denis Diderot" university.

**2007** : Paris 7 moved from its initial site, Jussieu campus in the Latin district of Paris 5, to the current site in Paris Left Bank in the south east of the French capital city. The move near to the Bibliothèque Nationale de France (BNF - National French Library) provided Université Paris Diderot with new facilities and boosted its ambitions.



## Presentation of Université Paris Diderot

**Since April 2009** : Université Paris Diderot is part of the PRES (Pôle de recherche et d'enseignement supérieur - Cluster for research and higher education) "Sorbonne Paris Cité", a consortium which includes 4 universities and 4 leading French sites: Sorbonne Nouvelle (Paris 3), Paris Descartes (Paris 5), Paris Diderot (Paris 7), Villeteuse (Paris 13), the IGP (Institute of Earth Physics of Paris), the INALCO (Institut national des langues et civilisations orientales - National institute of eastern languages and civilisations), the Institute of Political Sciences of Paris and the EHESP (Ecole des Hautes Etudes en Santé Publique - Higher school of public health studies).

This strategic partnership will reinforce the effectiveness and appeal of the French research and higher education system by sharing the skills of the partners.

### A few figures for Université Paris Diderot...

**26 000** students & **6300** graduates each year

**92** research teams working with the leading research bodies in France  
such as the CNRS, INSERM, CEA, INRIA, IRD and Institut Pasteur

**23** doctorate schools hosting over **2000** researchers, **2050** doctorate students,  
**400** thesis and **80** research supervisor accreditations each year

**19** Degrees & **8** professional Degrees

**33** Masters including **116** specialisations focusing on Research or Professional skills  
Complete Medicine and Odontology curricula

**190** other university degrees (60 university diplomas, 111 inter-university diplomas,  
preparation for selective examinations, etc.)





# Presentation of Université Paris Diderot

## Courses

Université Paris Diderot includes **3 departments, 16 faculties, 4 institutes** and **1 selective engineering school**. These academic bodies provide a wide range of revised courses targeting many different public and private professional sectors.

✚ information :

[www.univ-paris-diderot.fr](http://www.univ-paris-diderot.fr)  
Offre de formation

Sciences
Department of Biology
Department of Exact science
Faculty of Chemistry
Faculty of Information technology
Faculty of Mathematics faculty
Faculty of Physics faculty
Faculty of the Earth and environmental sciences and the planets
Faculty of Life Sciences faculty
University institute of technology
Mathematics teaching research institute
Denis Diderot selective engineering school

Literature and Human Sciences
Department of Literature and Human Sciences
Faculty of English and american studies
Faculty of intercultural studies and applied languages
Faculty of eastern Asian languages and civilisation
Faculty of Literature, art and film studies
Faculty of linguistics
Faculty of human and clinical sciences
Faculty of social sciences
Institute of contemporary philosophy
Health
Faculty of Odontology
Faculty of Medicine
University institute of hematology

# Presentation of Université Paris Diderot

## Foreign students

Every year, around **6000 foreign students**, on mobility programmes or registering individually, study at Université Paris Diderot.

Students registering individually are handled directly by their host academic body.

Students arriving as part of a mobility programme must go to the International relations' office (BRI) upon arrival.

Introductory meetings are planned both by the BRI and by the academic bodies.

## The International relations office (BRI)

The BRI manages and coordinates all of the international activities of Université Paris Diderot.

Welcoming foreign students on mobility programmes is part of the BRI's tasks.

## How to reach Université Paris Diderot

Using the metro system: line 14 – Stop: Bibliothèque François Mitterrand  
Using the RER train system: line C – Stop: Bibliothèque François Mitterrand  
Using the bus: lines 62, 89, 132 and 325 - Stop: Bibliothèque François Mitterrand



### CONTACT :

#### International relations office (BRI)

Bâtiment des Grands Moulins  
Wing A 2<sup>nd</sup> floor  
5, rue Thomas Mann  
75205 Paris Cedex 13 France

#### Public opening hours :

Monday-Wednesday-Thursday :  
9:00-12:00 and 14:00-16:00  
Tuesday-Friday :  
9:00-12:00

## Study organisation

### Higher education reform

The higher education reform establishing Degree-, Masters- and Doctorate- level qualifications was launched to standardise university qualifications in Europe and encourage student mobility. University studies are now broken down into 3 levels: Degrees, Masters and Doctorates. One year is worth 60 credits. Students need **180 credits** to obtain a degree, **120 credits** to obtain a **masters** and **180 credits** to obtain a **Doctorate**.

year 8	Doctorat			180 credits	
year 7					
year 6					
year 5	Master	M 2	semester 3	semester 4	120 credits
year 4		M 1	semester 1	semester 2	
year 3	Licence	L 3	semester 5	semester 6	180 credits
year 2		L 2	semester 3	semester 4	
year 1		L 1	semester 1	semester 2	

# Study organisation

## The European Credit Transfer System (ECTS)

Université Paris Diderot has adopted the European Credit Transfer System (ECTS). According to this system, a full-time student will obtain 60 credits for an academic year.

Each module represents a certain number of ECTS credits; you will obtain complete information on the credits assigned for each module from the academic body organising the module. The number of ECTS credits is calculated based on a volume of hours, classes and personal study. ECTS credits can be awarded for an internship or period abroad, for example, depending on the specific procedure for each course.

Credits represent international academic recognition for studies. Credits can be:

- transferred within France and Europe, for students spending part of their course abroad or changing course before completing their qualification;
- used, as they are definitively acquired, regardless of the length of the studies of the student.

### ECTS Grade Definition

<b>A</b>	EXCELLENT - Remarkable result, with only a few minor errors
<b>B</b>	VERY GOOD - Above-average result, but with a few mistakes
<b>C</b>	GOOD - Generally good work, with some significant errors
<b>D</b>	SATISFACTORY - Acceptable, but with substantial shortfallings
<b>E</b>	PASS - The result meets minimum criteria
<b>FX</b>	FAIL - Additional work is required before credits can be accorded
<b>F</b>	FAIL - Considerable additional work is required

## Study organisation

### The academic calendar

The academic year runs from September to end-June of the following year :

- **Semester 1** : September – December
- **Exam session S1** : between 2 & 15 January
- **Semester 2** : mid-January – mid-May
- **Exam session S2** : between 15 & 30 May
- **Support week S1 & S2** : between 1 and 15 June
- **Final exam session S1 & S2** : between 15 and 30 June



#### **Christmas break :**

3rd and 4th weeks  
of December

#### **Spring term break :**

between the 2nd and 4th  
week of April

#### **Public holidays :**

New-years day : 1 January  
Easter Monday : 25 April  
May day : 1 May  
Victory day : 8 May  
Ascension day : 2 June  
Whitsunday : 13 June  
National day : 14 July  
Assumption day : 15 August  
All Saints' day : 1 November  
Armistice 1918 : 11 November  
Christmas : 25 December

# How to register

## Registering with the university

---

Registering with Université Paris Diderot involves 5 main stages :

- **Stage 1 : Check out the courses**

All course information is available on the University web site: select your diploma.

[www.univ-paris-diderot.fr](http://www.univ-paris-diderot.fr) - "Courses" section

- **Stage 2 : Submit an application**

You must submit an application before registering. We suggest you read the explanations on the following pages carefully.

[www.univ-paris-diderot.fr/DEVU](http://www.univ-paris-diderot.fr/DEVU) - "Foreign students" section

- **Stage 3 : Register with the administrative services**

This registration will be completed when you pay your registration fees. This process must be repeated on an annual basis. This process will lead to the issue of a student card and proof of registration.

- **Stage 4 : Register with the faculty**

You must register for your course after registering with the administrative services. You can do this from September with your faculty or department (dates displayed on boards).

You now need to select your modules and draft your schedule.

- **Stage 5 : Activate your ENT account**

Immediately after your registration, you must connect to the ENT (Digital working environment), to activate your account.

Thanks to this process, you will receive practical information from your faculty/department/Institute or the University directly. You can redirect mail sent to this electronic address to your usual e-mail address by entering this address in the ENT

[www.univ-paris-diderot.fr/DEVU](http://www.univ-paris-diderot.fr/DEVU) - ENT portal

## How to register

Only two types of status exist for foreign students at Université Paris Diderot :

- Foreign students registering individually
- Foreign students on a mobility programme

Registration procedures vary depending on the type of application.

### Students registering individually

---

If no cooperation agreement exists between Université Paris Diderot and another higher education body, the student is considered to register individually. Therefore, students wishing to take a course at the University must comply with the applicable registration procedure.

*N.B.: Students wishing to register for a professional course (professional degree/masters/university diploma, technical diploma, interuniversity diploma or engineering diploma) must contact the academic body in charge of the course directly for information on the procedure.*

## How to register with Paris Diderot

### Which situation? Which procedure ?

	Registering for licence 1 & 2 and PACES <sup>(1)</sup>	Registering for Licence (year 3)	Registering for a master or doctorate
You are from a country in the <b>European Economic Area</b> */Switzerland	<b>SESAME</b> You are not required to prove your level of French	<b>SESAME</b> You are not required to prove your level of French	<b>SESAME</b> You are not required to prove your level of French
You are from a country outside of the <b>European Economic Area</b> * / Switzerland  You do not live in a <b>CEF country</b>	<b>DAP</b>  You must pass a French language test	<b>SESAME</b>  You must pass a French language test	<b>SESAME</b>  You are not required to prove your level of French
You are from a country outside of the <b>European Economic Area</b> <sup>(2)</sup> / Switzerland  You live in a <b>CEF country</b>	<b>CEF – DAP</b>  You must pass a French language test	<b>CEF</b>  You must pass a French language test	<b>CEF</b>  You are not required to prove your level of French

1. PACES : First common core year for Health studies
2. European Economic Area : Germany, Austria, Belgium, Bulgaria, Cyprus, Denmark, Spain, Estonia, Finland, France, Greece, Hungary, Ireland, Iceland, Italy, Latvia, Liechtenstein, Lithuania, Luxembourg, Malta, Norway, the Netherlands, Poland, Portugal, Romania, the United Kingdom, Slovakia, Slovenia, Sweden and the Czech Republic.



## How to register

### ■ SESAME application

You must submit your application using our on-line service :



The main steps :

.....  
+ information :

[www.univ-paris-diderot.fr/  
DocumentsFCCK/inscriptions/  
File/SESAME20102011.pdf](http://www.univ-paris-diderot.fr/DocumentsFCCK/inscriptions/File/SESAME20102011.pdf)

1. Read the SESAME guide
2. Submit your application using SESAME
3. Send your application by post with the documents listed on the application form (including the results of your French test), to the address indicated in the documents.
4. A special committee will study your application and send you an e-mail either accepting or rejecting your application.
5. You will then receive notification by e-mail and an official letter by post.

*N.B. : You should allow at least 3 weeks between sending your application and receiving the decision (excluding the month of August, when the University is closed).*



## How to register

### The French test in the context of a SESAME application

You must provide proof of passing one of the French language tests when applying for your long-stay student visa. Applicants must indicate the results obtained in one of the following tests or diplomas when applying to the Université Paris Diderot. No other test, diploma or means of assessment will be accepted by the University :

- **DALF** (Diplôme Approfondi de Langue Française - Advanced French language diploma). Level C1
- **DELF** (Diplôme d'Études en Langue Française - Diploma in French studies). Level B2
- **TCF** (Test de Connaissance du Français - French knowledge test) within the last two years. Level B1
- **TEF** (Test d'Évaluation en Français - French assessment test) within the last year. Level 3
- **DHEF** (Diplôme des Hautes Études Française - Diploma of higher French studies)
- **CEFP2** (Certificat d'Études de Français Pratique 2 - Certificate of practical French studies 2)
- **DS** (Diplôme supérieur - Higher diploma)
- **DL** (Diplôme de langue Français - French language diploma)

*N.B. : Students wishing to study for language diplomas (Degrees in English, eastern languages or applied foreign languages) must obtain level 4 or B2 or higher.*

## How to register

### ■ Prior request for admission (DAP)

Foreign students holding foreign secondary school qualifications must submit a prior request for admission (DAP) to register for a degree in a University.

**Important !** Two DAP forms exist. Select the right form according to your country of residence :

- if you are not resident in France, you must use the **"white" application form**
- if you are a resident in France, you must use the **"green" application form**

**The following students are exempt from the DAP :**

- Students studying in France in the context of an interuniversity agreement if specified
- Students receiving a grant from the French government, an international body or a foreign government for which grants are managed by an approved French agency
- Students who are stateless or political refugees holding the OFPRA (Office Français Pour les Réfugiés et les Apatrides - French office for stateless persons and political refugees) card
- Students whose parents are diplomats in service in France



# How to register

## White applications

Obtain the "white" application form from 1 December directly from the SCAC (Service de Coopération et d'Action Culturelle - Cultural action and cooperation service) of the French Embassy of your place of residence and submit the filled-out form to the same service before 31 January.

.....

+ information :

[www.diplomatie.gouv.fr](http://www.diplomatie.gouv.fr)

## Green applications

1. You can obtain a "green" application form :
  - from the target university, from the International relations' office, by showing a residence permit with a period of validity of at least one year between 1 December and 31 January ;
  - by post, by sending a request for a form to your target university before 15 January, with a photocopy of your residence permit.
2. Send the complete application, with all required documents, to your 1<sup>st</sup> choice university, unless this university is located in a different town to your home address.
3. Register for the TCF – DAP; you will register for this test when you submit your DAP.  
*N.B. : generally speaking, you should pass the test at your 1<sup>st</sup> choice university. However, if you live in a town with a university, at a substantial distance from the town of your 1<sup>st</sup> choice university, you may pass the test at the university in your home town.*  
*Example: you live in Lyons and you wish to register with a university in Paris: you can pass the test in Lyons. In this case, you must send your application to the university in Lyon and not in Paris.*



## How to register

4. The academic committee of the university will decide whether to accept or reject your application. This decision will depend on your diplomas, the validity of your residence permit, and the availability of places in at least one of your chosen universities.

.....  
**CONTACT :**

International relations office  
(BRI)  
[www.univ-paris-diderot.fr](http://www.univ-paris-diderot.fr)  
*"International"*

### **French test in the context of the TCF-DAP**

A 3-hour examination is organised in the context of the mandatory prior admission procedure to assess the written and oral understanding of the French language of applicants and their ability to write in French.

The TCF - DAP language tests must be passed, however passing this test in itself will not imply the automatic acceptance of your application.



## How to register

The following are exempt from the TCF-DAP :

- Nationals of countries where French is the official language\*;
- Non-French students, from bilingual classes mentioned on a list established jointly by the Ministries in charge of National Education and Foreign Affairs ;
- Students having passed the DALF with levels C1 and C2 of the Common European Reference Framework or the DELF with level B2 ;
- Applicants having previously passed the TEF organised by the Chamber of commerce and industry of Paris and obtained a score of 14/20 in the written examinations for this test.



.....  
+ information :

[www.ciep.fr/tcfdap](http://www.ciep.fr/tcfdap)

**\*List of countries where French is an official language :** *Belgium, Benin, Burkina Faso, Burundi, Cameroon, Canada, the Central African Republic, Comoros, the Congo, Côte D'Ivoire, Djibouti, Gabon, Guinea Conakry, Haiti, Luxembourg, Madagascar, Malí, Mauritania, Niger, the Democratic Republic of the Congo, Rwanda, Senegal, the Seychelles, Switzerland, Chad, Togo, Vanuatu.*

## How to register

### ■ The CEF procedure

#### **Important !**

This procedure is mandatory. Non-compliance could lead to the rejection of your application for a residence permit.

If you live in a country listed below having adopted the CEF procedure (Centre d'Etudes en France - Centre for Studies in France), you must pre-register on-line using the CampusFrance-CEF system for your country of residence, regardless of your level of knowledge of French. Registration with CampusFrance is mandatory for all students planning to study in France (students registering individually and on mobility programmes). The application will be handled directly by the CEF, which will check all documents.

#### List of the countries covered by the CEF procedure :

- Algeria
- Argentina
- Benin
- Brazil
- Burkina Faso
- Cameroon
- Canada
- Chile
- China
- Colombia
- South Korea
- Ivory Coast
- The United States of America
- Gabon
- Guinea
- India
- Japan
- Lebanon
- Madagascar
- Mali
- Mauritius
- Mexico
- Russia
- Senegal
- Syria
- Taiwan
- Tunisia
- Turkey



## International CampusFrance sites

Residents of countries with a CEF procedure must connect to the CampusFrance site of their country and follow the instructions on this site.

- **Algeria** [www.algerie.campusfrance.org](http://www.algerie.campusfrance.org)
- **Argentina** [www.argentine.campusfrance.org](http://www.argentine.campusfrance.org)
- **Benin** [www.benin.campusfrance.org](http://www.benin.campusfrance.org)
- **Brazil** [www.bresil.campusfrance.org](http://www.bresil.campusfrance.org)
- **Burkina** [www.burkina.campusfrance.org](http://www.burkina.campusfrance.org)
- **Cameroon** [www.cameroun.campusfrance.org](http://www.cameroun.campusfrance.org)
- **Canada** [www.canada.campusfrance.org](http://www.canada.campusfrance.org)
- **Chile** [www.chili.campusfrance.org](http://www.chili.campusfrance.org)
- **China** [www.chine.campusfrance.org](http://www.chine.campusfrance.org)
- **Colombia** [www.colombie.campusfrance.org](http://www.colombie.campusfrance.org)
- **Congo Brazzaville**  
[www.congobrazzaville.campusfrance.org](http://www.congobrazzaville.campusfrance.org)
- **Gabon** [www.gabon.campusfrance.org](http://www.gabon.campusfrance.org)
- **Guinea** [www.guinee.campusfrance.org](http://www.guinee.campusfrance.org)
- **India** [www.inde.campusfrance.org](http://www.inde.campusfrance.org)
- **Ivory Coast** [www.cotedivoire.campusfrance.org](http://www.cotedivoire.campusfrance.org)
- **Japan** [www.japon.campusfrance.org](http://www.japon.campusfrance.org)
- **Korea** [www.coree.campusfrance.org](http://www.coree.campusfrance.org)
- **Lebanon** [www.liban.campusfrance.org](http://www.liban.campusfrance.org)
- **Madagascar** [www.madagascar.campusfrance.org](http://www.madagascar.campusfrance.org)
- **Mali** [www.mali.campusfrance.org](http://www.mali.campusfrance.org)
- **Marocco** [www.maroc.campusfrance.org](http://www.maroc.campusfrance.org)
- **Mauritius** [www.maurice.campusfrance.org](http://www.maurice.campusfrance.org)
- **Mexico** [www.mexique.campusfrance.org](http://www.mexique.campusfrance.org)
- **Russia** [www.russie.campusfrance.org](http://www.russie.campusfrance.org)
- **Senegal** [www.senegal.campusfrance.org](http://www.senegal.campusfrance.org)
- **Syria** [www.syrie.campusfrance.org](http://www.syrie.campusfrance.org)
- **Taiwan** [www.taiwan.campusfrance.org](http://www.taiwan.campusfrance.org)
- **The United States**  
[www.etatsunis.campusfrance.org](http://www.etatsunis.campusfrance.org)
- **Tunisia** [www.tunisie.campusfrance.org](http://www.tunisie.campusfrance.org)
- **Turkey** [www.turquie.campusfrance.org](http://www.turquie.campusfrance.org)
- **Vietnam** [www.vietnam.campusfrance.org](http://www.vietnam.campusfrance.org)



## How to register

### Students on a mobility programmes

---

#### ERAMUS students

Université Paris Diderot has established over **400 bilateral Erasmus agreements** with **172 European universities** within the frame of the Erasmus program.

If you wish to study at Université Paris Diderot in the context of an exchange programme such as Erasmus, you must :

- check that a bilateral agreement has been signed for your subject area and your level of study at our university. You can check these elements with the International relations' office of your home university ;
- obtain level B1 (European Language Levels). This level is necessary to follow classes at Université Paris Diderot ;
- be officially declared an exchange student by your International relations' office. Université Paris Diderot will not process applications by students without this official declaration ;
- follow the on-line registration procedure.

# How to register

## International students

Université Paris Diderot has concluded over **250 bilateral agreements** with **institutions outside of Europe**.

Students wishing to study at Université Paris Diderot in the context of an exchange programme such as MICEFA, CREPUQ or an interuniversity bilateral agreement, must :

- check that a bilateral agreement has been signed for your subject area and your level of study at our university. You can check these elements with the International relations' office of your home university ;
- be officially declared an exchange student by your International relations' office. Université Paris Diderot will not process applications by students without this official declaration ;
- follow the registration procedure.

.....  
**CONTACT :**

International relations office  
(BRI)  
[www.univ-paris-diderot.fr](http://www.univ-paris-diderot.fr)  
"International"



### Deadlines for applications for exchange programmes

Mobility period covering semester 1 (Sept. – Jan.) : 30 May

Mobility period covering semesters 1 & 2 (Sept. - June) : 30 May

Mobility period covering semester 2 (Feb. – June) : 30 November

### Medicine internships

Autumn or winter internships : 30 May

Spring or summer internships : 30 November

## learning french

All classes are organised in French, understanding the French language is a pre-requisite for admission at Université Paris Diderot.

Various means of improving your French are at your disposal :

- Intensive course in French language and culture (SILC)
- Ongoing classes during the semester
- The university diploma in French language and culture (DULCIF)

### Intensive course in French language and culture (SILC)

#### CONTACT :

**International relations office  
(BRI)**

Bâtiment des Grands Moulins  
Wing A 2<sup>nd</sup> floor,  
5, rue Thomas Mann  
75013 Paris  
France

[www.univ-paris-diderot.fr](http://www.univ-paris-diderot.fr)  
"International"

An intensive course in French language and culture (SILC) is organised for European and international students on an exchange programme at Université Paris Diderot in the context of the European summer campus school.

This intensive course is organised early in each semester — September and January — for students on exchange programmes. It includes language and cultural classes as well as cultural trips.

The aim is to improve the introduction and integration of students within the University, and to prepare them for their future studies in good conditions.

This intensive course is intended to provide a great opportunity to simplify immersion, create social links and gain the trust of the students while improving their French and ensuring they pass their modules at our University.

# learning french

## Ongoing classes during the semester

Ongoing classes during the semester include 4 levels, ranging from beginners (A2) to advanced (C1). Students can take French classes and/or a workshop each semester (2 hours or 4 hours each week) :

- French language classes (A2 - C1): general vocabulary, grammar ;
- workshops: oral understanding and speaking (B1/B2), written skills (B1/B2 and C1), civilisation (B1/B2), phonetics (B2/C1), vocabulary (B2/C1).

Continuous assessment applies for ongoing classes during the semester. Credits are given for these ongoing classes each semester in the same way as other modules taught at Université Paris Diderot: 3 ECTS per module or workshop, if the examinations are passed.

An on-line level assessment test, FLE 7, is organised to determine the standard of each student in terms of written understanding, grammatical structures and oral understanding to create groups per level.

*N.B. : Students holding a diploma (DELF, DALF, etc.) or a test (TCF, TEF) are not required to take this assessment. These students may contact the LANSAD (LANGues pour Spécialistes D'Autres Modules - Languages for specialists in other subject areas) department directly, with their diploma or test certificate.*

### CONTACT :

**EILA faculty - French as a Foreign Language (FLE) department**

Bâtiment Biopark-Watt  
7 rue Watt - 75013 Paris

**FLE office**  
room 05

☎ +33 (0)1 57 27 57 19

[Fle@eila.univ-paris-diderot.fr](mailto:Fle@eila.univ-paris-diderot.fr)

**EILA faculty  
LANSAD department**

Bâtiment Biopark-Watt  
7 rue Watt - 75013 Paris

**Other languages office**  
rooms 015 & 016

☎ +33 (0)1 57 27 56 73

☎ +33 (0)1 57 27 56 70

[scolarite-lansad@eila.univ-paris-diderot.fr](mailto:scolarite-lansad@eila.univ-paris-diderot.fr)

### Public opening hours :

Monday - Tuesday

Thursday - Friday :

9:30 - 12:30 and 14:00 - 16:30

Wednesday : 9:30 - 12:00

## learning french

### The university diploma in French language and culture (DULCIF)

This diploma is intended for students aiming to improve their French in view of continuing with higher education at the University. This course is only available in the context of partnership agreements.

CONTACT :

EILA faculty - French as a  
foreign language department  
(FLE)

Bâtiment Biopark-Watt  
7 rue Watt - 75013 Paris

Office  
room 05

☎ +33 (0)1 57 27 57 19  
Fle@eila.univ-paris-diderot.fr



## learning french in Paris

**Other bodies also offer French lessons and diplomas :**

**Chambre of Commerce and Industry of Paris (CCIP)  
Paris delegation**

2, place de la Bourse – 75002 Paris  
+33 (0)1 53 40 46 00 [www.ccip.fr](http://www.ccip.fr)

**CIEP (Centre International d'Etudes pédagogiques - International centre of teaching qualifications)**

1, avenue Léon Journault – 92310 Sèvres  
+33 (0)1 45 07 60 00 – [www.ciep.fr](http://www.ciep.fr)

**Mairie de Paris – Municipal adult education classes**

+33 (0)8 20 22 75 75 – [www.paris.fr/fr/education/DASCO/cma](http://www.paris.fr/fr/education/DASCO/cma)

**Alliance française**

101 Bld Raspail – 75006 Paris  
[info@alliancefr.org](mailto:info@alliancefr.org)  
+33 (0)1 42 84 90 00



# living in Paris





# Administrative formalities

## Visas and residence permits

+ information :

[www.diplomatie.gouv.fr](http://www.diplomatie.gouv.fr)  
"Studying in France"

**Important !**

Your visa cannot be modified in France. Make sure you obtain your student visa before you leave your country.

- If you are a national of a country in the European Economic Area, you do not require a residence permit or a visa. A valid identity card/passport is adequate.

**Special case :** You are **Bulgarian** or **Romanian**

You are not required to hold a residence permit unless you wish to find employment or start your own business.

- If you are a student of another nationality, you must hold a residence permit and a current passport.

### ■ Obtaining your Visa

You must meet this formality before arriving in Paris. All students from outside of the European Economic Area and Switzerland must obtain a student visa (for stays in France of more than 3 months).

## Administrative formalities

### ■ Obtaining a residence permit

Foreign students coming to France for studies with a duration of more than three months must request a temporary "student" residence permit from their prefecture of the place of residence. The period of validity of this temporary residence permit is limited to the period of validity of the passport and may not exceed the duration of the studies. This permit may not be valid for more than 12 months, but may clearly be renewed free of charge.

#### List of prefectures in Ile de France

Prefecture	Telephon	Internet adress
Paris (75)	+33 (0)1 58 80 80 58	<a href="http://www.prefecturedepolice.interieur.gouv.fr">www.prefecturedepolice.interieur.gouv.fr</a>
Seine et Marne (Melun 77)	+33 (0)1 64 71 77 77	<a href="http://www.seine-et-marne.pref.gouv.fr">www.seine-et-marne.pref.gouv.fr</a>
Yvelines (Versailles 78)	+33 (0)1 39 49 78 00	<a href="http://www.yvelines.pref.gouv.fr">www.yvelines.pref.gouv.fr</a>
Essonne (Evry 91)	+33 (0)1 69 91 91 91	<a href="http://www.essone.pref.gouv.fr">www.essone.pref.gouv.fr</a>
Hauts-de-Seine (Nanterre 92)	+33 (0)1 40 97 20 00	<a href="http://www.hauts-de-seine.pref.gouv.fr">www.hauts-de-seine.pref.gouv.fr</a>
Seine-Saint-Denis (Bobigny 93)	+33 (0)1 41 60 60 60	<a href="http://www.seine-saint-denis.pref.gouv.fr">www.seine-saint-denis.pref.gouv.fr</a>
Val de Marne (Créteil 94)	+33 (0)1 49 56 60 00	<a href="http://www.val-de-marne.pref.gouv.fr">www.val-de-marne.pref.gouv.fr</a>
Val d'Oise (Cergy Pontoise 95)	+33 (0)1 34 25 25 25	<a href="http://www.val-doise.pref.gouv.fr">www.val-doise.pref.gouv.fr</a>

#### CONTACT :

The foreign students integration centre of the  
Préfecture de Police de Paris for  
students residing in Paris

92 boulevard Ney

75018 Paris

M° Line 4 :

Porte de Clignancourt

[www.prefecturedepolice.fr](http://www.prefecturedepolice.fr)

Section: "making an  
appointment : foreign students"

#### Public opening hours :

Monday - Thursday :

8:35 - 16:30

Friday : 8:35 - 16:00

☎ 08 21 00 19 75

## Staying in France : documents required



**Some documents may be required during your administrative formalities. Remember to bring them with you :**

- Your passport or identity card
- Your long-stay visa
- An abbreviated birth certificate
- Proof of social security cover, the European health insurance card for European students or form SE401 for Canadian students.
- Proof of previous studies
- Proof of address or a declaration by the people providing accommodation
- Proof of financial resources (450 EUR/month)
- 3 passport photos



# Administrative formalities

## Social and medical coverage

---

### ■ Social security coverage for students

In France, independent social coverage is mandatory for all adult students. Social security coverage for students only applies for students aged under 28\*.

All international students may benefit from this coverage, regardless of their nationality. 2 social security agencies exist for students :

- La Mutuelle des Etudiants (LMDE) - throughout France : [www.lmde.fr](http://www.lmde.fr)
- La Société Mutualiste des Etudiants de la Région Parisienne (SMEREP) : [www.smerep.fr](http://www.smerep.fr)

2 types of social coverage exist :

- basic coverage, which reimburses 70% of medical costs
- additional coverage (mutuelle), which completes the basic coverage with an extra 25% or 30%.

The two social security agencies for students can also provide additional coverage. This additional coverage is not mandatory, but is strongly recommended (particularly if hospitalisation is necessary).

*\* except for doctorate students, who may benefit from social security for students up to the age of 32.*

## Administrative formalities

### ■ Social security coverage for all

If you are aged **over 28 on 1 October of the year of your stay in France**, you cannot benefit from social security for students. Other solutions do however exist :

#### + information :

Caisse Primaire d'Assurance  
Maladie (CPAM)  
[www.ameli.fr](http://www.ameli.fr)

- **Universal health insurance (CMU)**  
You can benefit from the universal health cover (social coverage + additional cover).  
The CMU guarantees general social security coverage for any person with a stable and official residence and without social coverage.
- **Social coverage with private health insurance companies (mutuelles)**  
You can opt for basic insurance with a private agency.



### Health centres

Health centres (free-of-charge upon presentation of your social security card and proof of additional cover) are available to you and all other students:

Centre Saint-Victor	Centre médical HOSTATER	Centre de santé médico-dentaire
1, square de la Mutualité - 75005 Paris	24, rue le la Harpe - 75005 Paris	22, boulevard Saint Michel - 75005 Paris
+33 (0)1 10 46 11 50	+33 (0)1 46 33 45 15	+33 (0)1 43 54 14 14 ou +33 (0)1 44 07 25 28
Métro Maubert-Mutualité	Métro Saint Michel, Odéon ou Cluny	Métro Saint Michel ou Odéon

## Social security : administrative formalities

### Students from the European Union

You must obtain your European health insurance card. You must request this card from your social security agency before departing for France. You can use your European health insurance card to obtain the reimbursement of your medical costs in the host country.

### Canadian students

You must obtain form SQ 401-Q-106. You can use this form to obtain the reimbursement of your medical costs.

### Students from other countries

- If your stay in France is less than 3 months :  
You are not required to register with French social security for student cover HOWEVER you must provide a document in French certifying cover by your national health insurance system, for medical costs during your stay in France.
- If your stay in France is more than 3 months :  
You must register with the French social security for students. When collecting your student card at Université Paris Diderot, you must choose between the following two centres: LMDE or SMEREP. This insurance will cost approximately 200 euros.

## financing your studies

You may benefit from a student grant to finance your mobility plans. You must contact the competent authorities in your country for this purpose: ministry, university, etc. Several types of grants have been created to assist with financing your studies in France :

### + information :

[www.campusfrance.org](http://www.campusfrance.org)

### Important !

Grant applications must be made early.

For example, applications for Eiffel scholarships (Egide) must be received in November for the following academic year

- Excellence scholarships allocated by the French government (e.g.: the Eiffel scholarships by Egide)
- Grants assigned by local authorities (e.g.: Ile de France masters grants)
- Grants accorded by international or non-governmental organisations (e.g.: Agence Universitaire de la Francophonie - AUF)

CampusFrance, the French agency for the promotion of French higher education abroad, lists all of the financing programmes available for foreign students.

## Grants from the French government

### + information :

[www.diplomatie.gouv.fr](http://www.diplomatie.gouv.fr)

Grants from the French government intended for foreign students are mainly assigned by the Ministry of foreign and European Affairs. These grants back up priority training points, corresponding to the needs expressed by foreign governments. They mainly target doctorate and post-doctorate students.

Applicants are selected on the basis of academic criteria and not social criteria. In France, you will be considered as a student receiving a grant from the French government, which has its own benefits. You will not be required to pay a registration fee at the University, nor to register with social security for students. For more information on the grants available in your country, contact the cultural action and cooperation service of the French embassy in your country.

# financing your studies

## Specific programmes

- **Grants by the Agence Universitaire de la Francophonie (AUF)**

The AUF finances French-speaking students and researchers within its network of member/partner establishments. The AUF has 658 member institutions in 74 countries within the international French-speaking organisation and beyond. These grants are intended for masters or doctorate students.

.....  
+ information :

[www.auf.org](http://www.auf.org)

- **Ile de France masters grants**

The region of Ile-de-France awards student grants to students of 16 nationalities, with priority accorded to the different areas of decentralised cooperation or university/scientific cooperation for the region (Argentina, South Africa, Brazil, Canada, Chile, Hungary, India, Lebanon, Madagascar, Mali, Morocco, Mauritania, Poland, Russia, Senegal and Vietnam). Since 2008, this scope has been extended to all students from European countries. This programme targets students wishing to take a master's degree.

.....  
+ information :

[www.iledefrance.fr](http://www.iledefrance.fr)  
Section : Régional aid



## financing your studies

### Grants awarded by the French Ministry of National Education

+ information :

[www.crous.fr](http://www.crous.fr)

The grants accorded by the CROUS (National Student services) on the basis of social criteria are mainly awarded to French students. They may however be accorded to students who are nationals of a country in the European Union or the European Economic Area.

To be eligible for these grants based on social criteria, you must have spent one year studying or working in France (student card or employment contract for the previous year) or one of your parents or legal guardian must have received income in France.

Foreign students (non-EU) having resided in France for 2 years or more, and with their main residence for taxation purposes (father, mother or legal guardian) located in France for the previous 2 years or more, may also apply for these grants.

Student grant applications may be submitted on-line using the CROUS web site.

# Working in France

## Legislation

---

Since 1 July 2007, a foreign student can be recruited simply by showing his or her current temporary student residence permit, or by showing proof of a request to renew this permit. Students may work up to 60% of the annual legal duration of work, i.e. **964 hours per year**.

**It is therefore no longer necessary to obtain a Temporary Work Permit** to work on a part-time basis while studying (except Algerian students whose status is still subject to the French-Algerian Agreement of 27 December 1968, doctorate students, interns, temporary teachers and researchers and those with paid research contracts).

## Working in France

### Prior declaration of an employee :

Employers planning to recruit a foreign student must submit the following items to the Prefecture having issued the residence permit to the student in question 48 hours before the date of effect of the employment contract :

- the name of the company or the full name and address of the employer, the business register number of the company and the sites or, should this not be possible, the social security number indicated for the payment of contributions ;
- the full name, nationality, date and place of birth of the employee and the number of his or her residence permit ;
- the type of employment, duration of the contract, number of hours worked annually and the date of recruitment ;
- a photocopy of the residence permit shown by the employee.

#### CONTACT :

*PREFPOL.DPG-SDAE-6B-  
DECLAR-PREALABLE-  
ETUDIANT@interieur.gouv.fr*

#### **Important !**

to declare the recruitment of a foreign student to the Préfecture de Police de Paris is an offence.

In the same way, foreign students failing to comply with the legal duration of work may have their residence permits withdrawn by the Prefecture.



# Working in France

## Job vacancies

---

You can find job vacancies in interim agencies or on some small ad sites. We particularly recommend the following agencies, which have vacancies that are suitable for students :

Centre Régional des Œuvres Universitaires et Scolaires (CNOUS)	<a href="http://www.cnous.fr">www.cnous.fr</a>
Centre d'Information et de Documentation Jeunesse (CIDJ)	<a href="http://www.cidj.com">www.cidj.com</a>
La Cité des Métiers	<a href="http://www.citedesmetiers.com">www.citedesmetiers.com</a>
L'Etudiant	<a href="http://www.letudiant.fr">www.letudiant.fr</a>

## Accommodation

### Types of accommodation

Finding accommodation in and around Paris is very difficult. Université Paris Diderot has no university halls on the campus. For this reason, we strongly advise that you find accommodation in or near to Paris well before arriving in France. The following types of accommodation are suitable for students :

- Youth hostels

You could stay at a youth hostel for a few days until you find more long-term accommodation. Long-term accommodation options are limited depending on the availability of the structures.

#### Fédération Unie des Auberges de Jeunesse - FUAJ

27, rue Pajol - 75018 Paris      +33 (0)1 44 89 87 27      [www.fuaj.org](http://www.fuaj.org)

#### Centre International de Séjour de Paris (CISP)

17, boulevard Kellermann - 75013 Paris      +33 (0)1 44 16 37 38      [www.cisp.fr](http://www.cisp.fr)

#### Foyer International d'Accueil de Paris (FIAP)

30, rue Cabanis - 75014 Paris      +33 (0)1 43 13 17 00      [www.fiap.asso.fr](http://www.fiap.asso.fr)

#### La Maison Internationale des Jeunes (MIJE)

13, boulevard Beaumarchais - 75004 Paris      +33 (0)1 42 74 23 45      [www.mije.com](http://www.mije.com)

## Accommodation

### Bureau des voyages de la Jeunesse (BVJ)

20, rue J-Jacques. Rousseau - 75001 Paris +33 (0)1 53 00 90 90 [www.bvjhotel.com](http://www.bvjhotel.com)

### UCRIF Ethic Etapes

27, rue de Turbigo - 75002 Paris +33 (0)1 40 26 57 64 [www.ethic-etapes.fr](http://www.ethic-etapes.fr)

#### ■ CROUS halls

University halls are managed by the CROUS (National Student Services Agency).

The International relations' office (BRI) has a few rooms, however numbers are very limited. For this reason, not all applications will be accepted. Priority will be accorded to :

- students on the ERASMUS European exchange programme
- students benefitting from bilateral agreements with countries selected as priority countries by the University for International relations.

#### + information :

#### International relations office (BRI)

Bâtiment des Grands Moulins  
Wing A 2<sup>nd</sup> floor  
5, rue Thomas Mann  
75205 Paris Cedex 13 France

## Accommodation

### ■ Cité Internationale Universitaire de Paris (CIUP)

The Cité Internationale Universitaire de Paris (CIUP) is located in south Paris on a very pleasant site: 40 hectares of green open spaces where each pavilion has its own style, reflecting the country of construction.

.....  
**CONTACT :**  
 CIUP

17 boulevard Jourdan  
 75014 Paris  
[www.ciup.fr](http://www.ciup.fr)

Section: "Future residents",  
 "fill out your admission"

Master and doctorate students, researchers and high-level sportspeople and artists live side by side and represent over 120 nationalities.

### ■ Private residences

Rents for private residences are higher than for university halls, however the accommodation and facilities provided are generally of higher quality. You can also access services such as a laundry, café, etc.

The following is a non-exhaustive list of web sites providing information :

Les Estudines	<a href="http://www.estudines.fr">www.estudines.fr</a>
Association Fac-habitat	<a href="http://www.fac-habitat.com">www.fac-habitat.com</a>
Univercity	<a href="http://www.univercity.fr">www.univercity.fr</a>
Association ALJT	<a href="http://www.aljt.com/index.php4">www.aljt.com/index.php4</a>
Résidence Universitaire Lanteri	<a href="http://www.residence-universitaire-lanteri.cef.fr">www.residence-universitaire-lanteri.cef.fr</a>
Planeterasmus	<a href="http://www.planeterasmus.net">www.planeterasmus.net</a>

## Accommodation

Le CEP – Entraide étudiants	<a href="http://www.logements-etudiants.org">www.logements-etudiants.org</a>
Association FIAP	<a href="http://www.fiap.asso.fr">www.fiap.asso.fr</a>
Adèle	<a href="http://www.adele.org">www.adele.org</a>
Auberge internationale des jeunes	<a href="http://www.aijparis.com">www.aijparis.com</a>

### ■ Rental and flat sharing

If you rent from an individual, several solutions exist: use a real estate agency, pick-up the real estate magazines, search on the internet, etc.

You could also check out the small ads on the Internet, in shops, in newspapers or with clubs.

**Watch out for** companies that provide lists of accommodation at a cost. The advertisements are often fakes!

### A few good addresses :

#### Centre d'Entraide Etudiants (CEP - Student mutual assistance centre)

5, rue de l'Abbaye - 75006 Paris +33(0)1 55 42 81 23 ou +33 (0)1 55 42 81 25

#### Eglise américaine de Paris

65, Quai d'Orsay - 75007 Paris +33(0)1 40 62 05 00

#### Office central d'accueil et de Services Etudiants (OSE - Central students service)

11, rue Serpente - 75006 Paris +33 (0)1 45 35 69 10

#### Association des comités de défenses des locataires (Association of tenant defence committees)

11, rue Bellefond - 75009 Paris +33 (0)1 48 74 94 84

#### Association d'Information sur le logement (Accommodation information association)

46 bis, boulevard Edgar Quinet - 75014 Paris +33 (0)1 42 79 50 50



## Accommodation

### A few key words when it comes to rental :

- **Studio/bedsit** : Accommodation consisting of one room and a bathroom and WC
- **F1/1-room flat** : Accommodation consisting of one main room plus a separate kitchen and bathroom and WC
- **F2/2-room flat** : Accommodation consisting of two main rooms plus a separate kitchen and a bathroom and WC
- Duplex : Flat on two floors
- **CC** : All charges attributable to the tenant are included in the rent (electricity, gas, servicing of common areas, etc.)
- **Équipé/Equipped** : Accommodation with an equipped kitchen (fridge, cooking hobs, sink)
- **Meublé/furnished** : Accommodation including basic furniture such as a bed, table, chair, etc.



## Accommodation



### On-line ads by individuals or agencies :

[www.pap.fr](http://www.pap.fr)

---

[www.fnaim.fr](http://www.fnaim.fr)

---

[www.eduparis.net](http://www.eduparis.net)

---

[www.particulier.fr](http://www.particulier.fr)

---

[www.fusac.org](http://www.fusac.org)

---

[www.explorimmo.fr](http://www.explorimmo.fr)

---

[www.seloger.com](http://www.seloger.com)

---

[www.mapiaule.com](http://www.mapiaule.com)

---

### On-line flat sharing proposals :

[www.colocation.fr](http://www.colocation.fr)

---

[www.appartager.com](http://www.appartager.com)

---

[www.appartement.org](http://www.appartement.org)

---

[www.portail-colocation.com](http://www.portail-colocation.com)

---

[www.kel-koloc.fr](http://www.kel-koloc.fr)

---

[www.e-cologie.com](http://www.e-cologie.com)

---

[www.easycoloc.com](http://www.easycoloc.com)

---

[www.okroommate.com](http://www.okroommate.com)

---

## Renting accommodation : procedures and formalities

Before renting a room, bedsit or flat, you must complete some administrative formalities which are binding for both the tenant and the owner. You must conclude a lease. You will be required to provide a guarantee or deposit and proof of insurance.

**The lease :** you must sign a lease when renting property. Leases generally have a duration of one year. If you wish to leave your accommodation before the expiry of the lease, you must give three months' notice. Should this notice not be provided, the owner may retain all or part of your deposit (see below).

**The deposit or guarantee :** this amount will be equivalent to one month of rent and must generally be paid when you sign a lease. This amount will be returned to you when you leave the accommodation, unless you have damaged the accommodation or not given due notice.

**Guarantor :** in most cases, the owner, whether private or an institution, will request a guarantor, i.e. an individual (relative or friend) or an entity (agency, association, etc), providing a written commitment to pay the rent should you fail to do so. The guarantor must be able to provide proof of monthly income equal to three, or even four, times the rent. Should you fail to provide a guarantor, you must be able to provide proof of this level of income yourself, or pay the rent for the year in full in advance. In some university centres, systems exist allowing students to benefit from the commitment of a bank, institution or local authority as a guarantor. Conditions apply.

**Insurance :** as a tenant, you must take out comprehensive contents insurance covering fire, water damage, theft, etc..

**Council tax :** all tenants having signed a lease with a duration of one year or more must pay council tax each year. The amount of this tax may be as much as two months of rent. You may contact the tax office of your place of residence to obtain information on possible rebates.

# Accommodation

## Housing benefit

Depending on the type of accommodation selected and your family situation, you may be entitled to housing benefit. This benefit is accorded by the Caisse d'Allocations Familiales (CAF). Conditions apply.

### ■ Aide personnalisée au logement (APL)

The APL may be accorded to students, whether employed or not, living in accommodation subject to government management (e.g. council housing).

The amount of the benefit is paid directly to the owner and deducted from the rent.

This benefit may be as high as around **228 EUR**.

### ■ Allocation de logement social (ALS)

The ALS varies for students, from **15** to **168 EUR** per month. The lease must be in the name of the tenant student and the accommodation must meet specific standards in terms of comfort and surface area. You must submit an application immediately after moving into the accommodation, halls or hostel.

You cannot receive both the APL and the ALS and conditions apply :

- low income
- the accommodation must meet minimum standards in terms of comfort and surface area (9 m<sup>2</sup> minimum per person)
- you must hold a current residence permit (except for nationals from the members of the European Union, the European Economic Area and Switzerland).

### CONTACT :

Caisse d'Allocation Familiale  
(CAF)

[www.caf.fr](http://www.caf.fr)

☎ 08 20 25 75 10

*N.B. : If you share a flat with several people, each tenant must submit an individual application and the amount of the benefit will be calculated on the basis of his or her income and share of the rent.*

### Important !

All tenants must sign the lease.

## Practical informations

### Routine expenses

Before leaving your country, you must establish a precise budget for your expenses in France. In France, the minimum wage is equal to **8.86 EUR/hour**, i.e. **1343.77 EUR gross per month** on the basis of the legal working week of 35 hours. This level of income is supposed to cover essential requirements.

This is particularly necessary in Ile-de-France, where the cost of living is relatively high. Paris is one of the most expensive towns in the eurozone, particularly for rent. Don't forget to consider other miscellaneous expenses such as equipping your accommodation or contents insurance.

Student status will however allow you to obtain reduced rates at cinemas, theatres and museums and access university halls and restaurants.

In Paris, you need to plan for a **monthly budget** of approximately **1,000 EUR** to live decently.

## Practical informations

### University restaurants

You can access all university restaurants in the region thanks to your student card. Prices in these restaurants are known to be unbeatable. A full meal (main course and two extras - starter, cheese, dessert, etc.) costs 3 euros.

Some restaurants are open on evenings, weekends and during university holidays.



+ information :

[www.crous-paris.fr](http://www.crous-paris.fr)  
"Restauration"

#### Grands Moulins

14, esplanade Pierre Vidal-Naquet, Paris 13<sup>ème</sup> - R-d-C, M° François Mitterrand

Café: Monday - Friday, from 8:00 to 18:00

Pub meals : Monday - Friday, from 11:30 to 14:00

Pub room : Monday - Friday, 9:00 - 11:30 and 14:00 - 17:30

#### Halle aux Farines

3, esplanade Pierre Vidal-Naquet, Paris 13<sup>ème</sup> - R-d-C, M° François Mitterrand

Restaurant : Monday - Friday, from 11:30 to 14:00

## Practical informations

### Cuvier

8 bis, rue Cuvier, Paris 5<sup>ème</sup>, M° Jussieu  
Restaurant: Monday - Friday, from 11:30 to 14:00  
Café : Monday - Friday, from 8:45 to 16:00

### Censier

31, rue Geoffroy Saint-Hilaire, Paris 5<sup>ème</sup>, M° Censier Daubenton  
Restaurant, pizza stand, exotic meals, meat grill: Monday - Friday, from 11:00 to 14:30

### Mabillon

3, rue Mabillon, Paris 6<sup>ème</sup>, M° Mabillon  
Restaurant, pizza space: Monday - Friday, from 11:30 to 14:00 and from 18:00 to 20:00

### Tolbiac

17, rue Tolbiac, Paris 13<sup>ème</sup>, M° François Mitterand  
Restaurant : Monday - Friday, from 11:00 to 14:00

### Bichat

16, rue Henri Huchard, Paris 18<sup>ème</sup>, M° Porte de Saint-Ouen  
Restaurant : Monday - Friday, from 11:30 to 14:15

### Weekends and holidays :

### Restaurant Bullier

39, av. Georges Bernanos, Paris 5<sup>ème</sup>, M° Port-Royal, RER B  
Restaurant : 7 days a week from 11:30 to 14:00 and from 18:30 to 20:00  
Café : Monday - Friday, from 8:45 to 16:30

## Practical informations

### Transport in Paris

---

A very dense public transport system serves Paris and its suburbs. The metro system, buses, tramways and RER (Regional train system) cover an area broken down into 8 zones. Ticket prices vary depending on the zones you cross.

Zone 1 corresponds to Inner Paris. Zones 2 to 8 correspond to Greater Paris, with zone 2 immediately after zone 1 and each subsequent zone increasing in distance from the town centre. Université Paris Diderot is located in zone 1.

.....  
+ information :

[www.ratp.fr](http://www.ratp.fr)

### Driving in France

---

If you hold a driving licence issued in the European Economic Area, this licence is valid in France. If you hold a driving licence issued in a country outside of the European Economic Area, you may drive in France with your foreign licence throughout the entire duration of your studies, if you hold a student residence permit.

If you remain in France after your studies, you have a period of one year in which to request the conversion of your foreign driving licence into a French licence. This period of one year runs from the date of issue of a residence permit other than a student residence permit.



## Practical information

### Banks

We recommend that you open a bank account when you arrive in France. You will need to provide documents such as your passport or identity card, proof of address and your student card for this purpose. Before leaving your home country, ask your bank for information on any subsidiaries in France.

### Heating and electricity

You can obtain information from the following companies :

- EDF-GDF : [www.bleuciel.edf.com](http://www.bleuciel.edf.com)
- Poweo : [www.poweo.fr](http://www.poweo.fr)
- Direct Energie : [www.direct-energie.com](http://www.direct-energie.com)

Other companies exist such as Alterna, Planète Oui, Proxelia and Enercoop.

### Telecommunications

Three mobile telephone operators cover France :

- SFR : [www.sfr.fr](http://www.sfr.fr)
- Orange : [www.orange.fr](http://www.orange.fr)
- Bouygues Telecom : [www.bouyguestelecom.fr](http://www.bouyguestelecom.fr)

### Internet

A few Internet access providers :

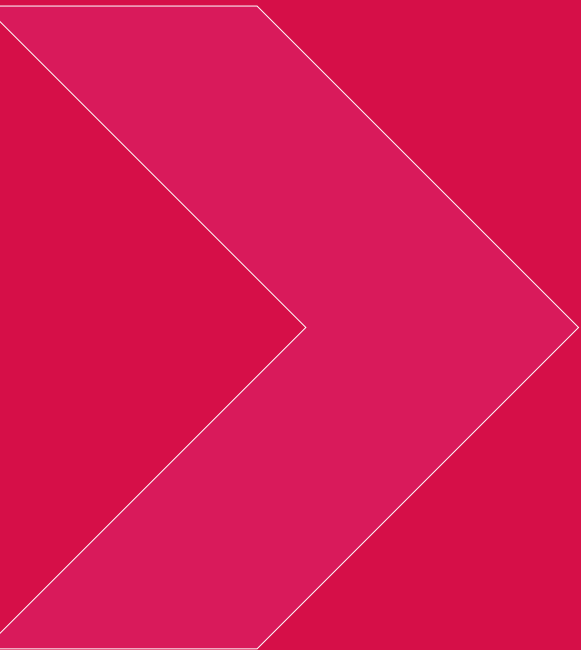
- Bouygues : [www.bouyguestelecom.fr](http://www.bouyguestelecom.fr)
- Darty : [www.dartybox.com](http://www.dartybox.com)
- Free : [www.free.fr](http://www.free.fr)
- Numericable : [www.numericable.fr](http://www.numericable.fr)
- Orange : [www.orange.fr](http://www.orange.fr)
- SFR : [www.sfr.fr](http://www.sfr.fr)

Check if your accommodation is equipped with Internet before you sign up for a contract with one of these access providers.

### Useful numbers and addresses

- Police or gendarmerie : 17
- Fire service : 18
- Ambulance service : 15
- Poison control centre : 01 40 05 48 48
- On-call doctors : 36 24
- European emergency number : 112
- Social services : 115





**Université Paris Diderot**

T. 01 57 27 57 27

**5 rue Thomas Mann**  
**75013 Paris**

ISSN 0337-4610

logotype © Catherine Zask