



UL Engage

Annual Report 2016/17



UNIVERSITY of LIMERICK

OLLSCOIL LUIMNIGH

UL Engage

share

enable

grow

Promoting University Community Collaboration

Welcome from the President



A commitment to engagement with our external communities permeates the full spectrum of UL's activities. This dedication to connectedness could be seen to be embedded in the University's 'institutional DNA', with origins in UL's external focus since its establishment. Our engagement is in alignment with national priorities, as articulated, for example, in the National Strategy for Higher Education 2030.

I am heartened to see the strength and depth of UL's engagement with the communities we serve and to know that this informs our mission.

Our current plans contain UL's commitment to supporting the Limerick 2030 Vision; collaborating with regional partners through the Mid-West Regional Cluster (UL, MIC and LIT), the UL Hospitals Group, the Shannon International Services Centre and many other groups; widening the diversity of the student population; and a dedicated focus on enhancing engagement with all our stakeholders, including a championing of Civic Engagement.

In this context I welcome the Annual Report 2017 from UL Engage as a reflection on the efforts of staff, students and partners to support civic engagement in research, teaching and in university/community collaborative projects. This update will serve to profile the wide spectrum of initiatives designed to meet the goals of UL Engage through a series of actions – in relation to research, teaching and learning, internationalisation, community partnerships, and institutional policies and supports – each contributing to the realisation of our ambition.

I commend to you the work of all our colleagues and partners in UL Engage and I wish them continued success in their endeavours.

Des Fitzgerald
President
October 2017

Advisory Board 2016-17

Professor Maura Adshead	Engaged Scholarship Advocate, UL Engage
Sheila Deegan	Arts and Culture Officer, Limerick City and County Council
Sarah Dunphy	President, ULSU
Dr. Fiona Farr	Dean, Centre for Teaching and Learning, UL
Tracey Gleeson	Senior Administrator, UL Engage
Professor Sarah Moore	Associate Vice President, Academic, UL
Mark Mulqueen	Director, Marketing and Communications, UL
Joe Nash	Chief Executive, Limerick 95FM
Hugh O'Reilly	Director of Business Development, The Wheel
Josephine Page	Director, International Education Division, UL
Bernie Quillinan	Civic Engagement Champion
Dr. Puneet Saidha	Director RSS, Research Office, UL

Contents

04 About UL Engage

About Engaged Research and Scholarship

Who is the Community?

Engaged Scholarship at UL

14 Engaged Communities

UL Engage Community Partners

Supports and Community co-created resources

Community Partnership Programmes and Projects

06 Engaged Learning @ UL

UL Engage Modules 2016/17

UL Practicum Modules 2016/17

18 Engaged Knowledge Exchange

UL Engage Workshops and Training

UL Engage International Collaboration

UL Engage Conferences and Presentations

10 Engaged Research @ UL

Driving the National Engaged Research Agenda

Supporting Engaged Researchers @UL

UL Engage Research highlights 2016/17

22 Engaged Institutional Policies and Supports

Supporting UL Engagement Nationally

Supporting UL Engagement @UL

About UL Engage

Established in September 2015, the aim of **UL Engage** is to support civic engagement in research, teaching and in university/ community collaborative projects. Since then, UL Engage has connected with other UL departments, institutes, divisions and units to help support, communicate and show-case the vast range of initiatives that are already occurring in UL. UL Engage is guided by four institutional level strategic goals:

- ⇒ To establish UL as a national and international leader in Engaged Research and Scholarship.
- ⇒ To develop, promote and support a 'gold standard' for university civic engagement in terms of the reputation, impact and evaluation of UL engaged activities.

- ⇒ To demonstrate the value-added that smart civic engagement can bring to the university's core goals in teaching and learning, research and internationalization.
- ⇒ To leverage the university's strengths and strategic commitment to sustainable social, cultural and economic development in our local region.

An operational plan was developed for UL Engage based on these goals. This plan breaks each of the institutional level goals into a series of actions – in relation to research, teaching and learning, internationalization, community partnerships, and institutional policies and supports – designed to realize our ambition. Please contact ULEngage@ul.ie if you would like more information about the operational plan.



Bernie Quillinan
Civic Engagement Champion



Maura Adshead
Engaged Scholarship Advocate



Tracey Gleeson
Senior Administrator

About Engaged Research and Scholarship?

Engaged Research and Scholarship refers to a wide range of rigorous research methodologies and teaching pedagogies that share a common interest in collaborative engagement with the community and aim to improve, understand or investigate an issue of public interest or concern. Engaged Research and Scholarship refers to *collaborative actions with community partners* as opposed to university actions *for them*.

Who is the Community?

A great deal of literature on engaged research and learning refers to 'community' engagement. In the context of this annual report, 'community' refers to the external partners engaged with UL staff and/or students in collaborative actions. These may include public or professional service and product users, policy makers, civil and civic society organisations and actors, as well as local communities and residents.

Engaged Scholarship at UL

UL Engage is currently working with other UL departments, institutes, divisions and units to map UL's community engagement in community projects, engaged teaching and learning opportunities and research activities.

If you, or someone you know in UL is involved in engaged research, teaching and learning or an engaged collaboration with community partners, please contact ULEngage@ul.ie so that we can share and support your success!



Promoting University Community Collaboration

Engaged Learning @ UL

The current discourse around civic engagement may be relatively new to Irish higher education, but its everyday practice has been evident in UL since the first days of the National Institute of Higher Education (NIHE). *Engaged Learning is in UL's DNA*. Since the outset, its institutional ambition to be 'excellent and relevant' reflected an intuitive concern with providing a link between the academic institution and the wider community for the benefit of all. This approach is clearly

evidenced in UL's commitment to Cooperative Education - a defining feature of the UL student experience. More recently the University of Limerick's Engaged Learning strategy for 2014-18 and the articulation of UL Graduate Attributes place student engagement at the heart of UL learning. These are evidenced in the development of UL Broadening Modules, UL Engaged Modules and the UL Practicum.



UL Engaged Modules 2016/17

The University of Limerick offers a variety of modules in which some of the content is developed with or for local communities. Since, however, modules are listed within departments and teaching programmes, it is often not possible to see the extent of UL engagement in everyday teaching. The creation of the 'UL Engaged Module' designation enables module leaders to high-light civic engagement opportunities provided in their module.

Since Autumn 2016, 24 UL Engaged modules are now profiled on the **UL Engage website** representing engaged learning in all faculties. The '**UL Engaged Modules**' listing provides an index of all UL modules that contain an element of engagement in the syllabus, with a brief summary of the module content and contact details for the responsible academic.



UNIVERSITY of LIMERICK
UNIVERSCOL LUMINIGH

ULENGAGE
Share Enable Grow

PS4032 Psychology and Social Issues

Credits: 6
Faculty: EHS
Department: Psychology
Contact: Orla Muldoon/Mike Quayle
Semester offered: Spring

AIMS AND OBJECTIVES

1. Demonstrate knowledge of how psychology can be used to encourage individuals and societies to make positive changes to their behaviours.
2. Demonstrate an understanding of reflexivity in the learning process and demonstrate an understanding of their own blind spots in terms of engagement with individual resources for health, such as physical exercise.
3. Demonstrate an understanding of the wider social and community influences on our behaviour and how they can be harnessed in a positive way for example via peer support and charitable behaviour.
4. Have an appreciation of the value of psychological research in explaining and resolving social issues.
5. Have an improved sense of well-being and a stronger sense of being part of a community of students and psychologists.

MODULE CONTENT

This module introduces students to the applied value of Psychology. In particular the module considers the many ways in which theoretical perspectives and methodological expertise in psychology are used to help people in fields as diverse as sport, education and health as well as in areas of social policy. Using social issues as a focus, this module encourages students to engage in evaluating the place of psychology in society and the role of psychologists in promoting progressive social change. Students are explicitly encouraged to think about careers in Psychology they may wish to pursue as well as encouraged to apply psychology in their own lives. Using your cohort (i.e. you and your classmates) as real live exemplars, these key methodological and theoretical areas will be connected to activity and in particular to attempt to get students to engage proactively in individual and collective behaviour change. Thus through a grounded and thorough psychological analysis students will gain insight into how contemporary social issues such as altruism and helping behaviour, obesity and exercise, suicide and self-harm; and stress can be tackled.

ENGAGED ACTIVITY

Students chose via consensus a charity that they work with. They then work with each other and the charity to raise awareness and funds for their selected cause. Over the last 4 years students have worked with Pieta House, the Rape Crisis Centre and in so doing have raised awareness and funds around these issues.

KEY RESOURCE

Muldoon, O. T., & O'Donnell, A. T. (2012). 'Running'an introductory module. *The Psychologist*, 25, 11, 828-829
Available at
[http://wa9ae9uv9t.scholar.serialsolutions.com/?sid=google&auinit=OT&aulast=Muldoon&atitle=%27Running%27an+introductory+module&title=Psychologist+\(London,+England+:+1988\)&volume=25&issue=11&date=2012&spage=828&issn=0952-9229](http://wa9ae9uv9t.scholar.serialsolutions.com/?sid=google&auinit=OT&aulast=Muldoon&atitle=%27Running%27an+introductory+module&title=Psychologist+(London,+England+:+1988)&volume=25&issue=11&date=2012&spage=828&issn=0952-9229)

"the designation of UL Engaged Modules is extremely helpful in recruiting international students, particularly from North America, where service learning is increasingly a core part of the student curriculum"

Josephine Page, Director, International Education Division

Next steps

In order to capture the full extent of UL engaged activity, we invite you to showcase your engaged module. For further details contact: tracey.gleeson@ul.ie

What is a UL Practicum?

The UL Practicum provides a means for academic staff to deliver their curriculum differently - in collaboration with community partners working on real-life projects. The UL Practicum enables students to achieve module learning outcomes via practical and applied experiential learning instead of, or in addition to, more traditional classroom based pedagogies.

For communities, UL Practicum projects are established in response to community identified needs and are designed and implemented by collaborative teams comprising UL staff, Community Partners and Students



Fresh young minds, outside eyes and new ideas—needed in every community!”
Biddy Hayes,
Bruff Grange Meanus (BGM) Community Council



For academics, the UL Practicum is essentially a project shell. It provides a pre-approved module code that enables your students to work with you on collaborative community projects and as part of their credited academic curriculum

For students, the UL Practicum provides curriculum based accredited learning in community projects, combining applied academic work with the development of UL Graduate Attributes.



In light of the benefits of this module, I feel that I am both a better student, but also a more well-rounded person.
Bailey Perry, University of Minnesota

For the university, the UL Practicum raises the profile and reputation of staff / student engagement with communities and applies consistent criteria for best practice community engagement.



UL Practicum Modules 2016/17

To date 108 students have successfully undertaken a UL Practicum module as part of their undergraduate or postgraduate university programme.

18

Students of politics collaborated with Limerick Youth Services, Comhairle na nOg and local community groups to provide informative “flash-debates” and workshops to local schools and organisations - designed to increase political understanding and civic engagement.

It really made me feel like I was a part of the Limerick community, not just a study abroad student here for a brief time. It was so valuable to feel that I had left my mark
Abbey Benning,

2

Journalism students worked with UL Marketing and Communications Office, UL, developing media content across a variety of platforms in order to communicate increased awareness of UL activities in the community.

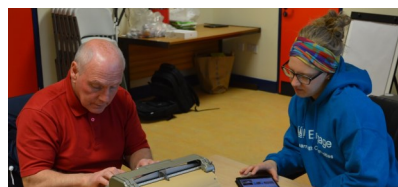


59

JYA International students undertook the UL Practicum in Spring and Autumn 2017. Students engaged with local Limerick city and county communities working and learning on projects identified by community groups. As part of their work students produced a community briefing report highlighting their learning and project outcomes.

43

Students from the School of Law worked on three community projects, providing clear and accessible legal guides and support to community partners in: Milford Hospice, the National Infertility Support and Information Group; and Community Law and Mediation, Limerick.



This practicum proved to be an invaluable educational experience because it taught me lessons about and skills for working with different people, stressed the importance of giving back, and built me as a person overall.
Kelsey Kuiper, Davenport University

12 2

Postgraduate students on the MA TESOL programme delivered three separate English language courses to Limerick refugees and asylum seekers. The project formed part of a broader initiative to register UL as a ‘University of Sanctuary’.

Masters students in the Department of History worked with Mungret College and created two short film pieces to provide interpretive resources for the Mungret heritage. The films provide a brief history of Mungret College up to the 1970s, as well as a 'then and now' look at the development of the area.

Next steps

If you are interested in:

- developing a UL Practicum;
- converting your current module to UL Practicum;
- or finding out more about community partners interested in the UL Practicum

contact:
Tracey.gleeson@ul.ie

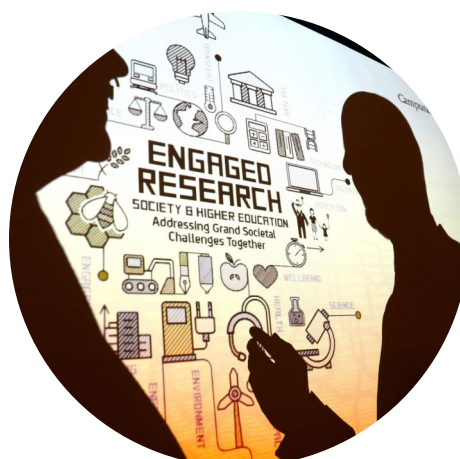
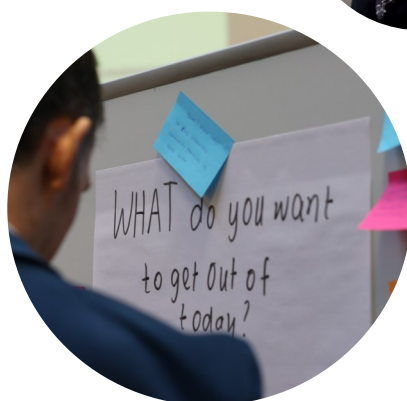
Engaged Research @UL

Engaged research describes a wide range of rigorous research approaches and methodologies that share a common interest in collaborative engagement with the community and aim to improve, understand or investigate an issue of public interest or concern, including societal challenges. Engaged research is advanced *with* community partners rather than *for* them.

The Irish Government's *Higher Education National Strategy 2030*; the *Higher Education System Performance Framework*, and *Innovation 2020: Excellence Talent, Impact* along with funding criteria from the Irish Research Council, Science Foundation Ireland, the Health Research Board, and the EU Framework Programme for Research and Innovation, Horizon 2020 (Pillar 3 / Marie Skłodowska-Curie) all place significant weight

on the need for greater engagement with public research stakeholders, including public or professional service and product users, policy makers, civil and civic society organisations (CSOs) and other actors

Since its inception, the University of Limerick has had a firm commitment to adding value, supporting growth and ultimately making a real impact both locally and globally. The University of Limerick's Research and Innovation Strategy—Excellence and Impact 2020—sets out a vision. That vision is to be internationally recognised as a research-led institution that delivers excellent research with impact. We will foster a research ethos that provides an outstanding student learning experience and is globally connected in addressing societal and economic challenges.



Driving the National Engaged Research Agenda

Coinciding with UL's chairing of the Irish Universities Association (IUA) Council, as chair of the national Campus Engage Steering Committee 2016/17, UL Engage played a key role in refocusing the work of Campus Engage, supporting a national policy agenda in favour of a broader definition of engagement in Irish Higher Education.

Initiatives

1. Shift the HEI engagement focus at national level to embrace engaged research
2. Use the IUA / Campus Engage forum to leverage influence for an Irish Engaged Research agenda
3. Raise the profile of Engaged Research as a trans-disciplinary high impact research activity

"The Framework provided in this Report on how to deliver engaged research is the first of its kind, and completely unique. It is directly responding to our national and EU Government policy to make higher education outputs more responsible to the public and agile to societal demands".

Prof Ray O'Neill,
Campus Engage Chair 2017-18

Impacts

1. UL Engage centrally involved in 'next steps' on national policy agenda..
2. Engaged Research Report recommendations taken up by HEA Performance Review System
3. Metrics for HEI engagement - to include Engaged Research
4. UL Engage to play a central role in SFI funded national training for Engaged Research
5. UL Engage continues to play central role in implementing ER report recommendations

18

Exemplars of UL Engaged Research are featured in the report:
<https://goo.gl/pyDTYG>



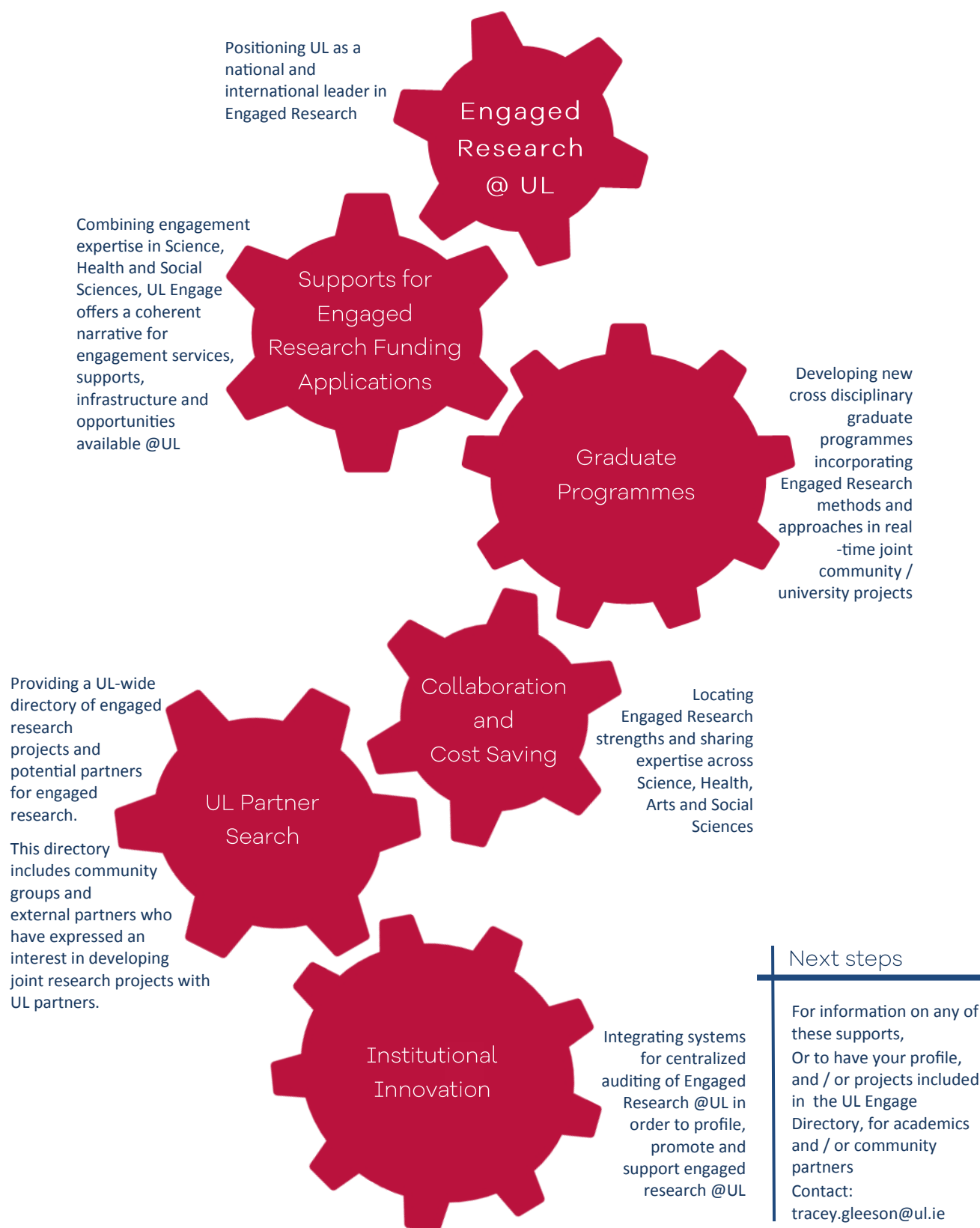
Actions

1. UL Engage credited as 'key driver' of the national Engaged Research policy agenda
2. UL Engage facilitated direct influence of UL researchers in report recommendations, which have been accepted by all major funders, policy makers and stakeholders and are in the process of implementation
3. UL Engage now centrally involved in the second phase of this work, developing a national Engaged Research resource hub, for policy makers, practitioners and community partners



At the launch of the report: Prof Maura Adshead, UL; Sarah Bowman Director of Public Engagement Trinity College Dublin; Kate Morris Campus Engage National Co-Ordinator

Supporting Engaged Researchers @ UL



UL Engage Research Highlights 2016/17



In June 2017, UL Engage was invited to present a 'Masterclass in Engaged Research' to The Wheel's Annual Conference in Croke Park, 27-29 June, 2017

"Research is critically important to making compelling cases for change; the challenge for community and voluntary groups is to develop a way of presenting a compelling mix of qualitative and quantitative research that fully reflects the social and economic impact of the work that they do"

Deirdre Garvey, CEO,
The Wheel

Publications

Articles

Adshead, M. (2015)

'Engaged Scholarship at the University of Limerick: one response to the 'civic shift' in Irish Higher Education', *Social Alternatives*, Special Issue on 'Civic Roles, Random Callings: discerning the University mission', **2015**, 34/2: 13-19

Adshead, M. and Quillinan, B. (2016) 'Having it all?

Transferring community-oriented research principles to teaching and learning to develop better university engagement', *Educational Action Research*, vol/issue: pages,

UL Engage Reports

2016, No. 1, *Creating Community Research Partnerships. Field notes from the 'Count Me In' Project, Ennis 2007*

M. Adshead, A. Basogomba, A. Loftus, W. Mongons, E. Ni Shé, D. Toomey

2016, No. 2, *Report of the UL Task Force on Civic Engagement, May 2012*

B. Whelan, B. Quillinan, B. Quilligan, S. Moore, S. Killian, S. Franklin, M. Bucholz, M. Adshead (Chair)

2016, No. 3, *An Evaluation of the Community Wellness, Empowerment, Leadership and Life Skills (CWELL) Programme, January 2014—January 2016*

M. Adshead, C. Dempsey, B. Quillinan

2016, No. 4, *An Evaluation of the 'Limerick Be Heard' election project, February 2016*

D. Forde-Murray

June 2017

UL Engage contributes to successful
PPI Ignite Proposal



IRISH RESEARCH COUNCIL
An Chomhairle um Thaighde in Éirinn

New Foundations Enhancing Civic Society within an International Context

This project links together four existing community partnerships between youth workers, young people and academics, in four different sites, each with collaborative connections to LYS and UL. Together we have agreed to run 'mirror' projects based on the Limerick Be Heard #GE2016 UL Practicum, which carried out youth and community workshops to address political participation and engagement in Spring 2016. Our research draws together our own project with those of our international mirror project partners to share insights into best practice and to devise a research programme to measure the impact of such educational interventions upon civic engagement and political awareness.

"Engaged research, based on proven good practice, is truly a 'win-win' for all stakeholders. It is no longer acceptable for research participants to be seen simply as research subjects – participants have much to contribute to shaping the right research questions and methodologies, and assisting in the analysis and interpretation of results."

Eucharía Meehan, Director,
Irish Research Council, 13 Jan 2017

UL joins UROP

The Undergraduate Research Opportunities Programme is a US-based university programme with individual university partners in Singapore, Hong Kong, Germany and a select number of UK universities (including Essex, Sussex, Cambridge and Imperial College London). The programme encourages outstanding undergraduate students to compete for awards to carry out faculty-mentored research projects in all academic disciplines.

In Spring 2016 the UL Practicum was admitted to the UROP programme. UL received 4 UMN UROP students 2016 and a further four in 2017.

Engaged Communities @UL

The University of Limerick is committed to supporting local community-based organisations and the voluntary sector, in the Limerick Region, in order to strengthen their capacity to serve their residents, develop new initiatives and enhance existing programs. UL Engage aims to create sustainable partnerships that provide an enduring benefit to local communities and to the University of Limerick.

We support community-based organizations by connecting students and academic courses to identified community engaged research and learning experiences. Working with communities we strengthen projects and experiences that address a need/problem in a local community and meet the educational goals of a student's course.



UL Engage Community Partners

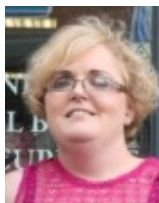
UL Engage has formed partnerships with local community groups and organisations across Limerick City and County.



The students made an invaluable contribution towards our aim of presenting and promoting the rich heritage of Mungret. In particular, they furnished badly needed technological skills with the enthusiasm and creativity of youth. Coming from outside Ireland enabled them to format the material in a manner that would be interesting to overseas visitors.

The students' obvious interest in our project was a welcome affirmation of our own efforts. It gave our confidence a badly needed boost and renewed our enthusiasm.

Nessian O'Donoghue,
Mungret Heritage Society



It was great to have the students alternative vision because you're focused inside in the project, you're working on it every day so you don't

see the whole picture. It's great to have students come in from outside and say 'do you know what I think would be a really good idea', but because you're so focused. It was brilliant to have that...

just bright, talented students just to say 'I think this will work'. Karen Keane,
Limerick's Gateway to Education

13

Projects were developed and undertaken as a UL Practicum by international students in Spring 2017.

The UL Engage project was a real shot in the arm to get our projects going again, for people to come in with fresh eyes and ears and look at our challenges and potential from a different light. Our community has benefitted from students coming in from a whole new country with a new international way of looking at things. Our project might not have progressed unless the students were involved.

Mark Nagle, Bruff Grange Meanus (BGM) Community Council



Samaritans were delighted to become partners with UL Practicum as it offered the chance to put into practice

projects that Samaritans would love to do, but because of the logistics involved and voluntary nature of the organisation can be difficult or too time consuming to achieve. It has also granted us the opportunity to work with a highly educated, diverse and motivated group of students.

John Downey,, Director,
Limerick & Tipperary Samaritans

18

Practicum Community partners:

Adare Heritage and Tourism;
AgeWell Ireland
Bruff Grange Meanus (BGM) Community Council;
Children's Grief Centre;
Kilmurry Arts & Cultural Centre
Limerick Christian Centre
Limerick's Gateway to Education;
Limerick Mental Health Assoc.
Lough Gur Heritage Centre
Mid West ARIES Mental Health;
Moyross Regeneration;
Munster Medics;
Mungret Heritage Society;
Murroe Community Video;
NCBI—Working for People with Sight Loss;
O'Malley Clan Association;
Samaritans;
St. Gabriels School & Centre

will have successfully completed the four workshop series and hosted a Practicum placement in collaboration with UL



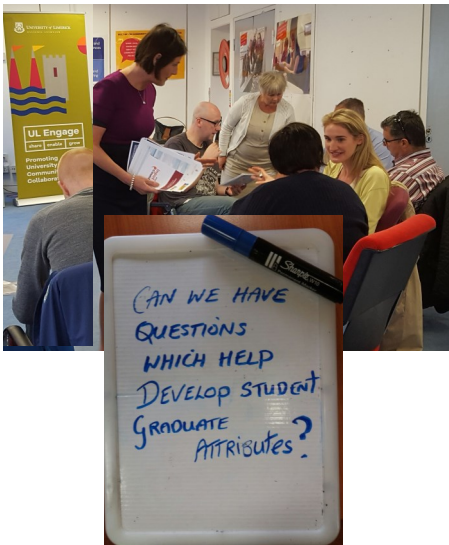
Working with the UL Practicum students was overall a very positive experience. The students who engaged with the St. Gabriel's project were on a study abroad programme from the USA. They were committed and enthusiastic in their approach to the work. They devised a plan around the project and developed a framework that can be brought to another stage. We were very pleased with the outcome.

Kate Sheahan,
St. Gabriel's School and Centre



Supports and Community Co-created Resources

UL Engage offers a **Community Partner Workshop Series**. Workshops combine discussions and presentations with hands on exercises to explore ideas and best practices specific to community-engaged research and teaching. Community partners have a key role in contributing to the content of the workshop series based on their identified needs.



15

Tools and resources to support community partners working on engaged learning/research projects have been developed by the UL Engage team in collaboration with our community partners, such as:

- ⇒ **Building Capacity with Community Partners to Support Student Engaged Learning: Training Workshop Series**
- ⇒ **UL Practicum Module Outline and Resources**
- ⇒ **Facilitating Community Engaged Learning**
- ⇒ **Graduate Attribute Development: Student Self Assessment**
- ⇒ **Supporting Graduate Attribute Development—Community Partner Role**
- ⇒ **Reflection in Community Engaged Learning**



57

Community representatives attended a UL Engage Introduction Session on exploring opportunities to work in partnership with UL.

UL Engage presents our partner communities with a 'Certificate of Engagement' in recognition of their role in supporting students



www.ul.ie/engage/node/2241

Community Partnership Programmes and Projects

UL Engage staff led the development and delivery of two cross-disciplinary community partnership programmes—CWELL and Limerick Be Heard



Community Wellness, Empowerment, Leadership and Life Skills (CWELL) programme

This is a two-year community-driven diploma programme which was developed in partnership between the community of St. Mary's parish, an underserved area of Limerick City, and staff of the Faculty of Education and Health Sciences at the University of Limerick (UL). The overall aim of the programme is to build capacity in wellbeing, leadership and life skills within the local community. The first cohort of CWELL students graduated in 2016. The findings from an impact evaluation which was included in the CWELL programme are published in the **UL Engage Report No.3—<https://goo.gl/bxEo4V>** In June 2017, funding was awarded by Limerick City and County Council to further expand CWELL into two new areas in addition to St Marys Community.

OUTDOOR PHYSICAL ACTIVITY PROJECT

This project aims to provide an outdoor physical activity area which serves all age groups in the community with a view to improving the physical, mental and social health of residents and strengthening social bonds. The provisional location for outdoor physical activity area is in the land beside the community centre and crèche.



PARENT, BABY AND TODDLER ACTIVITY GROUP

This project aims to provide a safe, secure place where parents, babies and toddlers can come together and participate in activities for the benefit of all. The target audience for this project is parents/carers with a child or children aged 0-3 years.

ALLOTMENTS

This project aims to provide opportunities for community residents to plant and harvest their own fruit and vegetables in local allotments. The project team hope that the allotments will encourage healthy lifestyles, reduce isolation, improve the health and mental wellbeing of the community and become a source of happiness, wellbeing and pride.



Limerick BE HEARD

Limerick Be Heard

This project is a collaboration between Limerick Youth Service, Limerick Comhairle na nOg and the Department of Politics and Public Administration. Originally designed to increase civic engagement and political participation in the context of the Spring 2016 Irish General Election. The project focused on providing facilitated workshops and #GE2016 Flashdebates to explain the Irish electoral system and the stances of all political parties. The project was so successful, it was subsequently developed into a more general educational intervention designed to develop global citizenship and human rights awareness. In 2017, the Young People from LYS and students from UL co-delivered the Limerick Be Heard #Youth Engage Schools Roadshow to five local schools. The programme is now being expanded locally and internationally.

Next steps

- If your community partners would like to participate in our workshop;
- If you are involved in a community organisation that would like to work with UL;
- If you are interested in finding a community partner to work with

contact:
tracey.gleeson@ul.ie

Engaged Knowledge Exchange @UL

The University of Limerick seeks to complement and broaden the impact and application of its research and teaching beyond academic life through a cohesive Knowledge Transfer strategy closely aligned with its research and teaching missions.

In 2008, the Enterprise Research Centre was established dedicated to developing continuing professional development that connects industry and academia and supports leading edge research for current and next generation enterprises. In 2014 UL researchers were winners of the inaugural Knowledge Transfer Ireland (KTI) Research2Business award. In 2016, UL's MACSI won the KTI Consultancy Impact award for a project in collaboration with Aughinish Alumina.

In order to develop these strengths, the University commits to:

- encouraging and supporting KT in order to maximise the education, health, economic and social impacts of the University's knowledge and expertise for the benefit of the University and its partners locally, regionally and internationally.
- promoting, publicising and raising awareness across the University of all aspects of Knowledge Transfer (economic development, provision of policy advice and public engagement) and to embed KT activities into every research grant application and funded research project.
- increasing the levels of KT from the university through staff incentives and rewards for engagement in this activity.

UL Engage supports this professional, public and project-based engagement with bespoke training for individual staff, students and communities.



UL Engage Workshops and Training 2016/17

76

Academic staff attended **8 UL Engage workshops** providing practical and academic advice on developing community engaged research and learning in UL.;
 February 2016;
 6 & 12 April, 2016;
 4 May, 2016; November 2016;
 13 December, 2016;
 6 April, 2017; 17 May, 2017

"Excellent workshop delivered in an easy to understand step-by-step approach. Great and a real revelation to hear about what UL are doing to address community need. I wasn't aware of this work"

Workshop participant May 2016

"Very informative. Excellent creative approaches described on facilitating community engaged learning and research. Brilliant to learn about supports from UL Engage. I will definitely plan to incorporate this into my teaching"

Workshop participant April 2016



UL Engage was happy to offer workshops and participate in:

9th UL Winter School in Social Science Research Methods, AHSS, UL, 9 -20th Jan 2017

2nd Public and Patient Involvement (PPI) Summer School, HRI, UL, 22-23rd June 2017

Contemporary Issues in Higher Education, TL5003 module delivered to the **Graduate Diploma in Teaching, CTL, UL, 12-16 June 2017**

RAw Communication and Engagement (RACE) Summer School, SSPC/ Bernal Institute, UL, 28 Sept- 1st Oct. 2017



Science Foundation Ireland - Campus Engage Discover Programme 2016

UL Engage was a collaborator with Campus Engage, DCU, DIT, NUIG, UCC and civic and civil society organisations on a successful funding application to SFI to provide a national programme on community engaged accredited learning.

The aim of the programme is to build capacity of Higher Educational Staff, specifically STEM educators in engaged teaching and learning. Bernie Quillinan, civic Engagement Champion, is a partner lead on the project and co-facilitated four workshops in 2016/17

- 226 university staff received training
- 70% of attendees were from a STEM background
- 30 % of attendees were from 'other' disciplinary background

The evaluation yielded over 200+ comments and responses which were all largely positive, providing valuable feedback for future programmes. **UL Engage is already involved in a second round of applications to the SFI Discover Call 2017.**

UL Engage International Collaboration



UNIVERSITY OF MASSACHUSETTS BOSTON—
UL STRATEGIC ALLIANCE FOR CIVIC ENGAGEMENT
March 2016—ongoing

Outcomes:

- development of parallel graduate programmes with a core civic engagement component providing the necessary common foundations for development of shared programme contents and/or joint programme development in the area of engaged research and practice in both institutions
- creation of an on-line platform to enable the sharing, developing and co-creation of online resources for engaged teaching, learning and research.
- development of parallel practicum modules in Boston and Limerick in the area of youth engagement and active citizenship, to enable shared curriculum content and student exchanges
- introduction of the Undergraduate Research Opportunities Programme (UROP) in UL for visiting UMB and JYA students.

INTERNATIONAL 'BE HEARD' NETWORK ESTABLISHED MAY 2017

As part of the IRC #Youth Engage project, UL Engage hosted international partners from UMass Boston, American University Beirut, ABF Sweden, IFWEA, ZAK Malta to create an international network for engaged scholarship and research on global citizenship. Outcomes include new international modules, summer schools, exchanges and an IRC CAROLINE application with our international partners.

WORKING WITH THE UNIVERSITY OF HANOI AND ACTION FOR THE CITY, VIETNAM

UL Engage invited to give a key note presentation and facilitate workshops at a Conference: *Embedding Community Engaged Learning to Higher Education System: Opportunities and Challenges* taking place in Vietnam in September 2017. The conference is a collaboration between Hanoi University and Action for the City, Hanoi, Vietnam. The expected number of conference participants is 200 and it will have representation from 12-16 universities from North Vietnam. UL Engage will also further scope potential opportunities for collaboration through the Vietnam Ireland Bilateral Education Exchange programme (VIBE)



July 2017 UL Engage and the IEO were selected to host an **AIEA Thematic Forum** on 'Community Engaged Learning' to be held in 2018. The Association of International Education Administrators is the only association dedicated exclusively to senior leaders in the field of international education.

Next steps

If you would like your international engagement profiled and/or supported, please contact Tracey.Gleeson@ul.ie

Conferences and Presentations

CONFERENCES

Quillinan, B. (2017) 'Strategies for embedding community engaged learning within universities and communities' Keynote presentation at: International Conference: Embedding Community Engaged Learning To Higher Education Curriculum: Opportunities and Challenges. University of Hanoi, Vietnam 28-29 September 2017

Wynne. R., and **Quillinan. B.** (2017) 'Campus Engage Ireland, Collaboration, Community, Capacity', Keynote Plenary Conversation at: UNIBILITY – University Meets Social Responsibility 2015-2017 Programme 1st European USR-Conference, University of Barcelona, Spain, 22nd September, 2017 .

Quillinan. B. McPhail. A & Dempsey. C. (2017) 'Transforming Teaching and Learning through engaged practice: Lecturers and students' experiences in a university and underserved-community partnership in Ireland', presented to the 17th International Association for Research on Service Learning and community Engagement (IARSCLE) Annual Conference, Gateways-Charting New Territories & Forging Authentic Relationships', NUI Galway: 14-16 Sept 2017

Boland. J., **Quillinan. B.**, Randles. E., Dang Quang Minh., Nhat Tuan Nguyen (2017) 'Service-Learning as a Response to Global Transitions in Higher Education: Opportunities for Transforming Higher Education and Advancing Social Impact' presented to the pre conference workshop of the 7th International Symposium on Service Learning NUI Galway, 14-16 June, 2017

Quillinan, B (chair), Cameron-Coen, S., Ginty. C., Kelly. M., Naughton. McIlrath. L., M., McDonnell, M., Morgan. M., (2017) 'Carnegie Community Engagement Panel: Perspectives from Irish Higher Education Institutions on the Carnegie Community Engagement Assessment Framework in Ireland - A Pilot Project Based on the Carnegie Community Engagement Framework'. Plenary Presentation to the 7th International Symposium on Service Learning, NUI Galway, 14-16 June 2017

Quillinan, B 'Transformative learning through engaged practice – Educators' experiences of involvement in an Engaged programme in Ireland', paper presented to the 7th International Symposium on Service Learning NUI Galway, 14-16 June, 2017

National Workshops/Seminars/Presentations

Quillinan. B. (2017) 'The role of educational institutions in Seminar on Migrant & Refugee Integration' presented to University of Limerick / University of Boston, Massachusetts collaborative workshop, on Improving the impact of educational institutions on migrant and refugee integration, University of Limerick, 1 June 2017

Quillinan, B. (2016) Local Convenor and Presenter, Campus Engage/ Science Foundation Ireland Participate programme, UCD 14 March 2016

Quillinan, B. (2016) Local Convenor and Presenter, Campus Engage/ Science Foundation Ireland Participate programme, Trinity College Dublin, 20 November 2016

Quillinan, B. (2016) Local Convenor and Presenter, Campus Engage/ Science Foundation Ireland Participate programme, Dublin City University, 9 May 2017

Regional Workshops/ Seminars/ Presentations

Quillinan, B. (2017) 'The work of UL Engage and how communities can get involved in UL/community partnerships', presentation to the Limerick City and County Council (LCCC)-Council of Chambers, 24 November, 2017

Quillinan, B (2017) 'Working in partnership with the University' presentation to the Limerick Lifelong Learning Festival, Teaching Expo, 4 April 2017, South Court Hotel, Limerick

McIlrath, L., Broderick, C., Ginty, C., Kelly, M., Morgan, M., **Quillinan, B.** and Randles, E., (2016) 'Perspectives from Irish Higher Education Institutions on the [Carnegie Community Engagement Assessment Framework in Ireland](#) - A Pilot Project Based on the Carnegie Community Engagement Framework', presented to the International Association for Research on Service-Learning and Community Engagement (IARSLCE), Università di Bologna , 10 June 2016 - Bologna, Italy

Quillinan, B., Mc Evoy, E., MacPhail. A., (2016) 'Transformative learning through engaged practice – Educators' experiences of involvement in an Engaged programme in Ireland', presented to the National co-ordinating Centre for public Engagement (NCCPE) Engage Conference-Inspiring Innovation. Bristol, UK. 28-30 November 2016

Quillinan, B., MacPhail, A., McEvoy, E., Dempsey, C., Reidy, G., (2016) 'Reconceptualizing and leveraging a partnership model for co-creation of knowledge and translation to improve and sustain healthy communities: Diploma in Community Wellness, Empowerment, Leadership and Lifeskills (CWELL)' presented to Networking for Education in Healthcare (NET2016), Churchill College, Cambridge, 6-8 September 2016.

Quillinan, B. , Adshead. M., and Reidy, G. (2016) 'Scaffolding support for collaborative research, teaching and learning, and mindful community engagement – an integrated model for responsible research', presentation to the 7th Living Knowledge Conference, Dublin Castle, 22-24th June 2016.

Quillinan, B., MacPhail, A., Mc Evoy, E., Dempsey, C., Reidy, G., (2016) 'Reconceptualising and Leveraging a Partnership Model for Co-creation of Knowledge and Translation to Improve and Sustain Healthy Communities: A Diploma in Community Wellness, Empowerment, Leadership and Life skills', presentation to the Global Health and Innovation Conference, New haven, CT. Massachusetts. USA 16-17 April 2016.

MacPhail, A., **Quillinan. B.**, 'Shaping and reshaping the landscape of Teaching and Learning: Perspectives from the Shannon Consortium' presentation to Shannon Consortium Symposium on 'Sharing Challenges, Inspirations and Innovations in Teaching and Learning', University of Limerick, 30 May 2017

Engaged Institutional Policies & Supports

Institutional supports and policies provide the foundations for all areas of UL engagement.

UL Engage is committed to creating and supporting internal UL mechanisms, policies and protocols that help sustain quality-driven university–community engagement

Working with other UL units and with the successful PPI Ignite team in UL, UL Engage strives to integrate the principles of Engaged

Research and Scholarship into the mainstream of the UL mission and to develop the evidence base to demonstrate this approach.

UL Engage works to make UL stand out from all other universities is the way that we show that engagement is part of what we do. Our ambition is that whether you are inside the university or outside the university, you will not see an ‘engaged unit’ – you will see an engaged approach and ethos that is core to UL.



Supporting UL Engagement Nationally

At local and national level UL Engage staff have provided key roles in driving policy change.



ENGAGEMENT AUDITS—UL ENGAGE CARNEGIE FOUNDATION REVIEW

Throughout 2016, UL Engage represented UL in the **Carnegie Community Engagement Assessment Framework Ireland Pilot Project**. Funded by the Talloires Network, the Community Knowledge Initiative, NUIG, and the University of Massachusetts Boston, this project was designed to assist the Carnegie Foundation to develop an international community engagement classification system. As well as providing a complete institutional review of all UL engagement activities, this exercise afforded UL the opportunity to both receive feedback on the review from Carnegie Foundational reviewers and to input key insights from the review process into the emerging international classification system. UL Engage compiled all of the necessary data and submitted the institutional report to the US based review team in June 2016. The exercise was useful in identifying informational gaps in the UL institutional review and audit system that will need



UL Engage have brought energy, enthusiasm and commitment to the national HEI civic engagement agenda. aware of this work"

Kate Morris, Campus Engage Manager



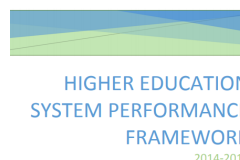
IRC Engaged Research Phase Two 2017-19 deliverables include:

- Engaged Research Guides
- Engaged Research Policy Briefings
- National Web Resource
- Engaged Research Training Programme
- National Seminars and Brokerage events for HEIs and CSOs



SFI Engaged Research Training comprising:

- Development of Engaged Research Training Toolkit
- Delivery of 3 Training Sessions for @100 researchers to 5 selected sites in UCC, UL, NUIG, TCD, UCD



ENGAGEMENT METRICS—UL ENGAGE WORKING WITH CAMPUS ENGAGE AND HEA

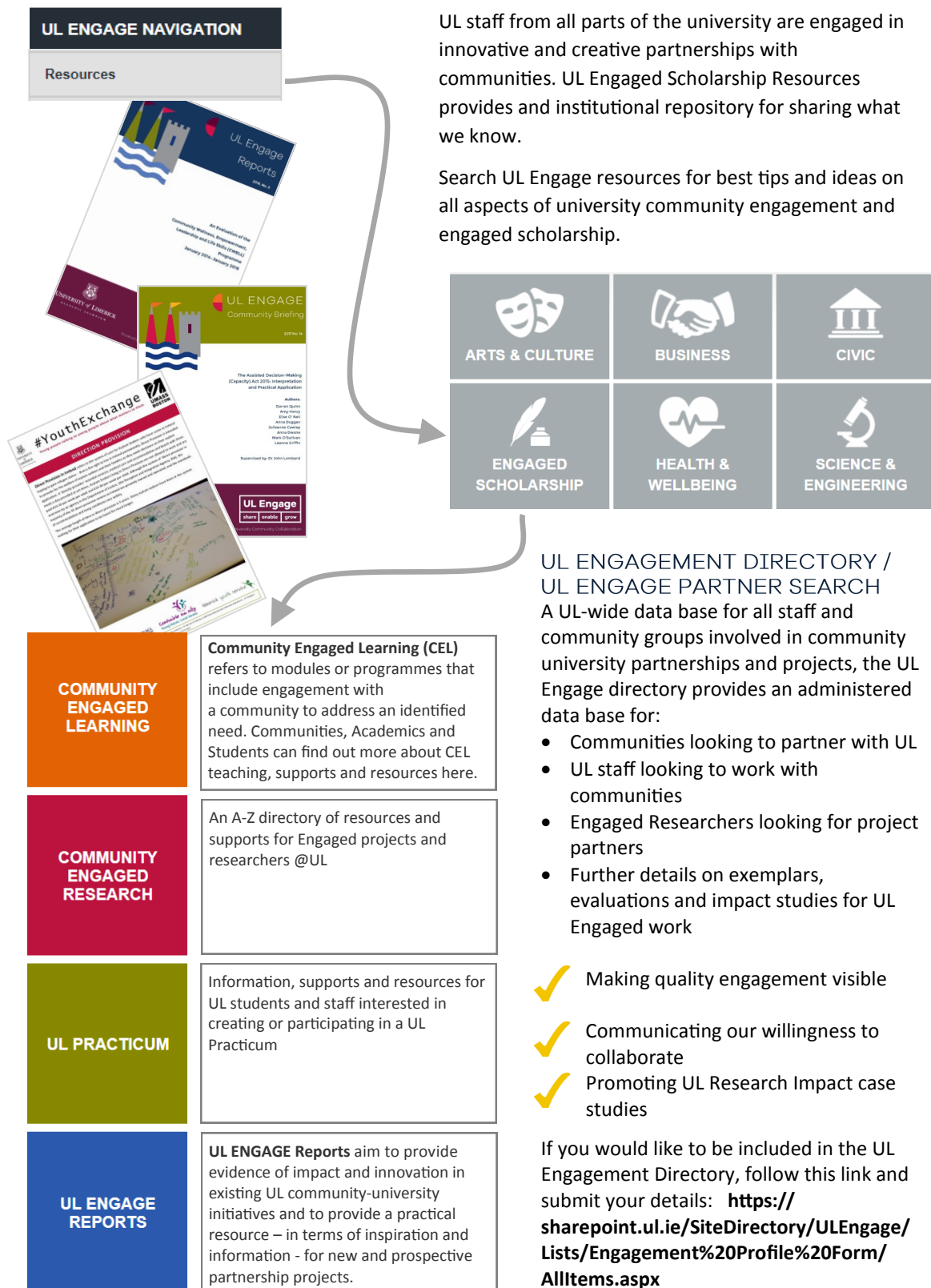
Current revisions to the HEA Performance Framework will expand the metrics by which HEI engagement is audited and evaluated.

Through the IUA, Campus Engage is working with the HEA to propose relevant and meaningful impact indicators for HEI civic and community engagement. UL Engage representatives are active contributors to the Campus Engage working committee: mapping current HEI engagement activities and developing a national audit system that is appropriate for Irish Higher Education.

Audit and Reporting systems are currently being designed for the following five core areas:

1. Community Engagement Resources and Structures
2. Staff incentives, rewards, policy and practice
3. Teaching and Learning
4. Research and Innovation
5. Engagement Data and Quality Audit processes

Supports for Engagement @ UL



Policies for Engagement @ UL

In order to be ready for forthcoming HEA engagement metrics, we need to make the demonstration of our engagement easier. This can be achieved with a few small changes to existing protocols...

In Teaching and Learning,

We can make the identification of existing engaged pedagogy easier

- By adding a 'community engaged learning' identifier to APRC documentation for new modules and programmes
- We can count the staff involved in engaged learning and the UL hours of time spend on it by adding an 'community engaged learning' identifier to student administration scheduling
- By rolling out the UL Engaged Module listing to capture more engaged teaching that already happens

In Research,

We can make the identification of existing engaged research easier

By adding an 'Engaged Research' identifier to existing Research Account set-up forms, enabling UL to record the number of funded engaged research projects

By adding an 'Engaged Research' identifier to UL Ethics forms to enable the recording of all UL engaged research. This already happens in the HRI in relation to PPI research.

In the University

We can identify existing engagement expertise across all faculties to create synergies, develop projects and share expertise

- By ensuring that all staff are included in the UL Engage directory in order to capture the number of engaged contacts by staff
- By recognising that engagement is a UL strength – we just need to show it!

UL Engage Thanks.....

Access Office staff Deirdre O'Connor, Donal O'Leary, Sorcha Prendergast

Advisory Board members Sheila Deegan, Sarah Dunphy, Fiona Farr, Sarah Moore, Mark Mulqueen, Joe Nash, Hugh O'Reilly, Josephine Page and Puneet Saidha

Bernal buddies helping us to develop new programmes and engaged training opportunities..
Sarah Hayes, Jacques Huyghe, John Mulvihill

Centre for Lifelong Learning supporters Michael Hennessy, Ann Ledwith, Catherine McCarthy,

Community partners.. Adare Heritage and Tourism; AgeWell Ireland; Bruff Grange Meanus (BGM) Community Council; Children's Grief Centre; Kilmurry Arts & Cultural Centre; Limerick Christian Centre; Limerick's Gateway to Education; Limerick Mental Health Association; Lough Gur Heritage Centre; Mid West ARIES Mental Health; Moyross Regeneration; Munster Medics; Mungret Heritage Society; Murroe Community Video; NCBI—Working for People with Sight Loss; O'Malley Clan Association; Samaritans; St. Gabriels School & Centre

Engaged Module leaders from all faculties... Gabriela Avram; Norah Burns; Gerard Coffey; Catherine Foley; Shane Kilcommins; Sheila Killian; John Lannon; Ann MacPhail; Hilary Moss; Orla Muldoon; John Murnane; Liam Murray; Helen Phelan; Mike Quayle, Fergal Quinn; Diarmuid Scully; Daniel Tindall

Engaged Project pioneers from all faculties Declan Aherne, Susan Coote, Aileen Dillane, Jane Kavanagh, Stephen Kinsella, Anne MacFarlane, Deirdre Nally, Anne O'Connor, Marie O'Donnell, Bernadette O'Regan

Fiona Farr and all her colleagues in the Centre for Teaching and Learning

International Education Division stars and supporters.. Ivanna D'Arcy, Katherine Martin, Laura Moloney and Josephine Page

Kate Morris and all our Campus Engage colleagues and collaborators in Dublin and across Ireland

Lewis Purser and all the IUA staff who support our work

Limerick City and County Council representatives Brid Burke, Josephine Cotter-Coughlan, Geraldine Dollard, Donal Fitzgibbon, Seamus Hayes, Laura Ryan, Vicky Ward

Limerick Youth Services staff Olivia Chau, Kathy O'Sullivan, John Real, Maurice Walsh

Mairead Loughran and the tech support in ITD

Practicum Pioneers in the History, Law, Journalism, Languages and Politics.. Lydia Bracken, Norah Burns, Laura Donnellan, John Lombard, Henry Silke, Kathryn Hayes, Fergal Quinn, Mairead Moriarty, Vincent O'Connell

Student administration's unseen heroes who schedule, switch and support our engaged activities:
Ruth Corless, Nuala Guinane, Anna Murray, Cathal O'Shea

PPI Ignite team for supporting our efforts to develop stronger policies and protocols for engagement

Research office staff Richard Cotterell, Cathal Linnane, Sharone O'Loughlin

WE COULDN'T HAVE DONE IT WITHOUT YOU!



www.ul.ie/engage E-mail: ULEngage@ul.ie

Telephone: +353 61 202096