



UL ENGAGE

Community Briefing

2017 No. 10

Adare Heritage and Town Signage

Aimee Allcock
Jonathan Tormoen



UNIVERSITY of LIMERICK
OLLSCOIL LUIMNIGH

UL Engage

share

enable

grow

Promoting University Community Collaboration

THE BRIEF

Eleanor Purcell, a shop owner in Adare involved in Tidy Towns, became involved with the UL Engage program to mentor two groups in the town of Adare. One, involving Aimee and Jonathan, researched historical sites in the area to address Adare Tidy Towns concern with local business signage on town streets. Businesses and shop owners display signs beyond their storefronts, which detracts from the historical aesthetic of Adare's streets. Regulations placed in the projected Adare Area Plan highlighted rules against these displays, but this information did not appear widely known. We needed a way to inform heritage site owners about how to comply with current regulations. We concluded our objective was to display this information for people interested in learning more about site maintenance and regulations how the community sees fit. These could include physical and online means of accessing the information for current homeowners to prospective buyers of protected sites.



COMMUNITY PARTNERS



Eleanor Purcell

Local Area Plan and Tidy Towns

Eleanor Purcell runs a shop in Adare and is involved in various projects with the Tidy Towns Group. She initiated the Tourist Ambassador programs in response to the loss of the Failte Ireland Office three years ago.

She is the community partner in Adare, and led two groups: one focusing on Adare tourist promotion with Meghan Dion and Nicholas Himann, the other with focus on town heritage with Aimee Allcock and Jonathan Tormoen.

Tom Cassidy

Architectural Conservation Officer, Limerick City and County Council

Tom Cassidy is an archaeologist. Having graduated from University College Galway he worked first with the Galway Archaeological Survey, where he developed his specialism in buildings' archaeology. Thereafter there followed a twelve year stint with the Hunt Museums Trust as Director of 'Craggaunowen- The Living Past', the charity's open air facility dedicated to interpreting Ireland's built environment from the Stone Age to the Early Christian Period. Tom was one of the first local authority Architectural Conservation Officers appointed at the time of the introduction of the protected structures legislation (Part IV of the Planning and Development Act, 2000) and has covered the Limerick area since then.

In addition to day-to-day work, such as commenting on planning applications involving elements of the built heritage, Tom is responsible for the preparation of Section 57 Declarations (determinations of works that require planning permissions and works deemed exempt from planning restrictions) for protected structures and the administration of grant schemes to assist owners / occupiers of heritage buildings, which are annualised programmes. The initiation of enforcement proceedings as and when necessary is a further duty. The final major component of his work involves the processing of additions to, and removals from, the Record of Protected Structures- a four to five month procedure that is usually undertaken once a year. Every so often he finds himself responding to disasters, be it flooding damaging a house and its contents or a conflagration destroying a property.

COMMUNITY PARTNERS

The role of the Architectural Conservation Officer includes:

- Identify, survey, and issue reports on proposed additions, deletions or amendments to the Record of Protected Structures
- Determine boundaries of Architectural Conservation Areas
- Planning Application advising for the purpose of preserving Protected Structures, works within Architectural Conservation Areas
- Issue provisional application approval, assess quality of repair works, payment of grant
- Outline the type of works that do and do not affect the character of a Protected Structure
- Reporting to Planning Enforcement, Dangerous Buildings Section or Derelict Sites Section when Protected Structure endangered or works carried out without planning permission
- Providing in-house architectural conservation expertise to a Local Authority on projects/policy documents that may impact on built heritage of county e.g. county development plan, new road proposals, water drainage schemes, traffic management schemes, local area plans, urban centre design strategies, etc.
- Providing advice to the general public in relation to built heritage/architectural conservation i.e. the production of guidance notes, supervision of specific built heritage projects.

www.Limerick.ie

George Stacpoole
Stacpoole Antiques

Main St, Blackabbey, Adare, Co. Limerick

Provided us with relevant support and direct contacts.

Lady Geraldine Dunraven, Estate owner and Manager

Imparted knowledge about the history of the town as well as current life in Adare.

Liz Beesley, Reverend at Saint Nicholas's Church

Facilitated a tour of Saint Nicholas's Church with knowledge of the renovation and updating process of this historical building.

Jo Harrington

President of the Adare & District Historical Society

Historical Society located in Adare Heritage Centre, Main Street, Adare, County Limerick

info@adareheritagecentre.ie

Provided us with project information.

STUDENTS



Aimee Allcock is a UL study abroad student from the South Dakota School of Mines and Technology, intending to graduate with a Civil Engineering degree in 2019. She was involved in the first semester of UL Engage Practicum project in Adare, with focus on preservation and presentation of heritage sites with partner Jonathan Tormoen, and methods to communicate preserved site policies to the community.



Jonathan Tormoen is a UL Study Abroad student from Minnesota in the United States. He currently goes to university at the University of Minnesota and studies Computer Science with an intended graduation date of Spring 2018. He worked in a group with Aimee Allcock in Adare with a focus on heritage law and status as well as town signage and advertising. He also worked on a research project for his home university alongside this practicum that focused more in depth in international and Irish heritage law and how it is applied in a community such as Adare.

PROJECT RATIONALE

Adare is a small town in Ireland just Southwest of Limerick in Limerick County. The population is around 1,106 as of the 2011 census. There are 109 protected structures in this small town, and we explored its current management and how Adare's protected sites are maintained. As a class at the University of Limerick, we were tasked with looking into current signage in the town, how it affects the town, and what could be done about it. Since a big part of the economy of Adare is tourism, shops and restaurants would put signs up in store fronts or out onto the sidewalks in order to attract customers. What we found was that shop owners often didn't fully understand the regulations in place surrounding protected sites.

Our objectives were to determine what could be done about current and future signage, and to investigate policies surrounding signage and their placement.

We found that historical site boundaries are carried to the centre of the road it lays beside. Thus, footpaths and signage near these areas are on a historic site and apply to the rules agreed upon in Adare's Local Area Plan 2015-2021. The Area Plan was created by the Limerick City and County Council and put under public display and critique for several months before voted into effect. Tom Cassidy provided us with most of the information concerning Limerick City and County Council processes. Regulations under the Historical Sites Objectives F and G and information displayed in the Building/Modifications section of the Plan state proposed rules concerning tourist flow and retail display. Footpaths are to be left clear of retail and signage displays so pedestrians can walk freely. Signage that diminishes the historical character of the shop fronts is also not advised.

We decided that the best method of reaching the intended audience was to create a pamphlet outlining the Limerick City and County Council's policies on the subject. We created a simple but useful handout for people interested in learning more about site maintenance and regulations. In the future, this pamphlet could be turned into an accessible pdf document for online access. The information we compiled is intended for presentation to any community members interested in these regulations, and to inform heritage site owners about how to comply with current regulations.

POSSIBLE FUTURE PROJECTS

Eleanor has expressed concerns with the future of the thatched cottages. Some cottages are commercial restaurants and clothing stores, but some remain residential. Families living in these houses have very little privacy. It may not be sustainable to have residential homes with such tourist traffic, but what the buildings' purpose could be in the future remains in question.

Each cottage has been an integral part of town life since their construction, and have changed owners often in the past: one has been a Dunraven-run factory, another the birthplace of a long-time Adare local. Another one of Eleanor's ideas would be to find ways of collecting the history of the cottages and displaying this for tourist and local passer by alike.

APPENDICES

WHY IS HERITAGE IMPORTANT?

Heritage sites reflect the history and culture of the location and the people from where they are found.

537,000+ COUNTY LIMERICK VISITORS IN 2015

WHAT ARE PROTECTED SITES?

Historical sites are often in a delicate state. Preservation of heritage sites is an important task carried out by those affiliated with these sites, on both a global and local scale.



Located southwest of Limerick and recognized by the government as a heritage town, Adare has a rich number of protected sites.

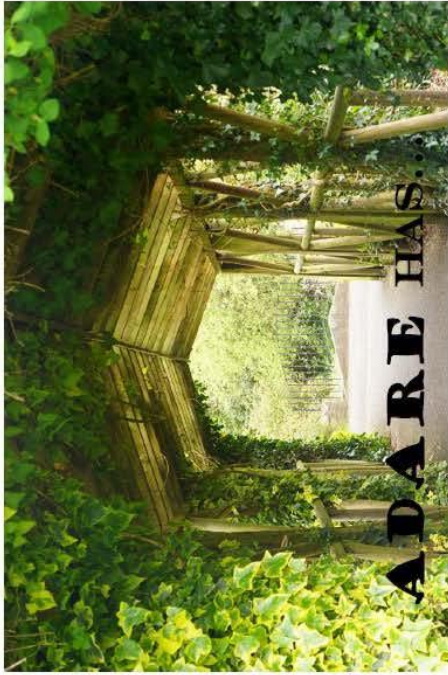
Page 2

Adare

Local Area Plan 2015-2017



LIMERICK CITY & COUNTY COUNCIL
Balancing Conservation and Preservation of Historical Buildings



Businesses **189**

109 Protected Sites

Thatched Cottages **11**

3 Historic Churches

12th Century Castle **1**

YOU + ADARE

The county appointed local authority works with local communities to aid in site planning as well as any construction that needs to be done. They also oversee applications for financial aid in order to distribute aid to applicants that need it most. The local authority serves as the connection between towns, community members, and the governmental policies surrounding their properties. This Planning Authority is further explained on page 7.

HISTORICAL SITE OBJECTIVES

Information mentioned below is found in Objective ED 3: Retail Development of the Adare Local Area Plan 2015-2021.

F): Tourist Flow

Enhancing the physical environment of the village centre as a location for shopping and business through measures aimed at improving conditions for pedestrians.

G): Retail Display

Encourage the retention of traditional shop fronts to enhance the streetscape. Shopfront and directional signage shall not, by reason of its scale, form or size, be visually detrimental to the appearance and character of the building or streetscape.



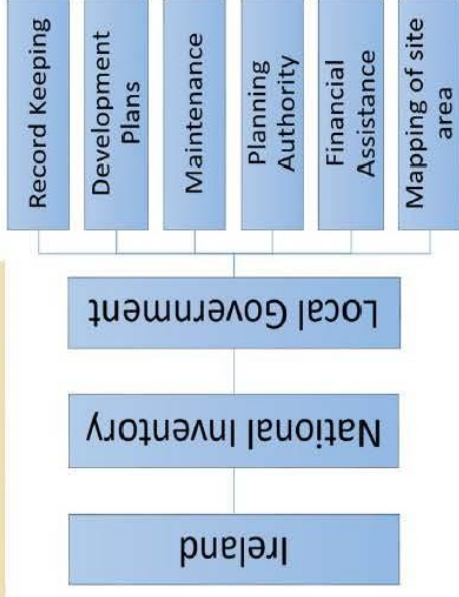
Keep footpaths clear of retail and signage displays so pedestrians can walk freely.

.....
 Signage that diminishes the historical character of the shop fronts is not advised.



Page 5

Heritage Maintenance in Ireland



Page 6

The Planning Authority and Conservation Officer

Established to protect the architectural heritage of County Limerick

Roles of the Planning Authority include:

- Edit the Record of Protected Structures.
- Determine boundaries of architectural conservation areas.
- Review planning applications to preserve protected structures within conservation areas.
- Provide architectural conservation expertise to Local Authority projects.
- Provide general public advice to relation to built heritage and architectural conservation.

Page 7

Records of protected sites are available upon request from the City Council in Limerick.

For further information or queries, please visit:

www.limerick.ie/council

Or contact Tom Cassidy,
Architect Conservation Officer

+(0)61 496 367 (Direct Line)

tom.cassidy@limerick.ie

Adare Heritage and Signage

Jonathan Tormoen + Aimee Allcock

Community Partners

Eleanor Purcell – Property Owner and Adare Tidy Towns organizer
Tom Cassidy – Limerick County Architectural Conservation Officer

Intervention

We decided that the best method of reaching the intended audience was to do research into the policies surrounding protected sites in Ireland and create a handout outlining these policies. This handout can be distributed to those looking for more information on protected sites.

Objectives

- Determine what could be done about current and future signage
- Investigate policies surrounding signage and their placement

Conclusion

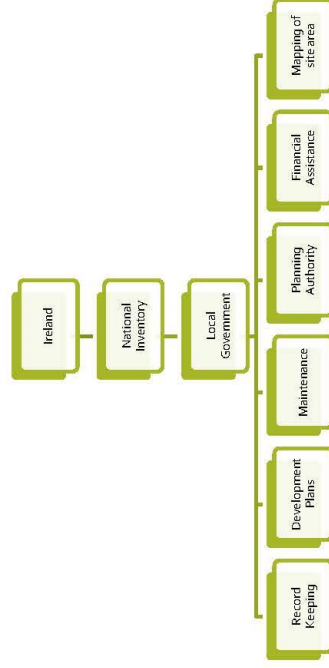
The handout developed will be useful to give to owners of protected sites as well as prospective buyers of these sites. This will aid in the preservation of these sites while maintaining the historical aesthetic of Adare.

Introduction

Adare is a small town of around 1,300 people in County Limerick. Our project was to look at some of the 109 protected sites in Adare to investigate storefront signage detracting from the town's historical aesthetic.

Outcome

We researched protected site policies in Ireland and created a simple but useful handout for people interested in learning more about site maintenance and regulations.



UNIVERSITY of LIMERICK
O L L S C O L L L I M E R I C K



www.ul.ie/engage E-mail: ULEngage@ul.ie
Telephone: +353 61 202096