

**DESIGN@UL**



**UNIVERSITY OF  
LIMERICK**  
OLLSCOIL LUIMNIGH

05. BEN SHARKEY GARRARD
06. CAITRIONA MOLONEY
07. CAITRIONA WINSHIP
08. CAOIMHE CANTWELL
09. CAOIMHE ROUGHAN
10. CIAN MCCARTHY
11. CIAN O'DONNELL
12. CLODAGH MEANEY
13. CLODAGH RYAN
14. CONOR DALY
15. CÚLÁN HIGGINS
16. DAVID CONWAY
17. ELLA WHITE
18. ELLEN MCNAMARA
19. EMER FLOOD
20. FINNIAN KELLY
21. GOULLO DJENEB BAH
22. GRAINNE MEEHAN
23. GRETA RADŽIŪTĖ
24. JAMES KENNEDY
25. JAMES MCKENNA
26. JULIANNA FLYNN
27. KIERAN GUINAN
28. MATTY WALSH O'GRADY
29. NATALIA SZYMKOWIAK
30. NORMAN PRICE
31. ROSIE BERGIN
32. SEAN FINUCANE
33. SIMON MULLARKEY
34. TOMAS MCKENNA
36. AIDAN BARRY
37. DAVID BLACKWELL
38. LOUISE BLAIR
39. CRIOMHTHANN BRENNAN
40. ALEX BROPHY
41. ORLA CARBERY
42. COLM CAREY
43. ROBERT CASEY
44. KEELAN CHRISTIE
45. MATTHEW CODY

|    |                         |                           |
|----|-------------------------|---------------------------|
| 46 | A S H L E Y             | C O R C O R A N           |
| 47 | J A M I E               | C U R L E Y               |
| 48 | A D A M                 | D E E G A N               |
| 49 | K A Y L E I G H         | F O G A R T Y             |
| 50 | S I O F R A             | F O L E Y                 |
| 51 | S E A N                 | G A L V I N               |
| 52 | C O N O R               | G O L D E N               |
| 53 | R E G I N A             | G R A N A H A N           |
| 54 | M E G A N               | G R A N T                 |
| 55 | C E A D A N             | H O G A N                 |
| 56 | O L I V I A             | H U M P H R E Y S         |
| 57 | A N N A                 | H U R L E Y               |
| 58 | O R L A                 | J O Y C E                 |
| 59 | T H E O                 | J O Y C E                 |
| 60 | K O K A L L E W A A R D |                           |
| 61 | O I S I N               | K E L L Y                 |
| 62 | T O M A S               | K E L L Y                 |
| 63 | D A N I E L             | K E N N E L L Y           |
| 64 | A M Y                   | L A H E R T Y             |
| 65 | A B I G A I L           | M C C A R D L E           |
| 66 | A L A N                 | M C C A B E               |
| 67 | E M M A                 | M C N U L T Y             |
| 68 | M I G L E               | M E C I O N Y T E         |
| 69 | A O I F E               | M U R P H Y               |
| 70 | K Y L E                 | M U R P H Y               |
| 71 | J A C K                 | N A G L E                 |
| 72 | M I C A H               | N I E L S E N             |
| 73 | C I A R A               | N O V A K O V I C         |
| 74 | A D A M                 | O ' B R I E N             |
| 75 | L E A H                 | O ' D O N N E L L         |
| 76 | C I A N A N             | O ' H A N L U A I N       |
| 77 | L E L I A               | R I O R D A N             |
| 78 | C A I T L I N           | R Y A N D E S M O N D     |
| 79 | S E A N                 | Ó G S H E E D Y           |
| 80 | A N N A                 | W H I T E                 |
| 81 | R O N A N               | W H Y T E D O O L E Y     |
| 82 | B E N                   | W I L S O N               |
| 84 | E O I N                 | K E N N Y                 |
| 85 | P R I Y A N K A         | P U T H A N V E E T T I L |
| 86 | S I O B H A N           | T O B I N                 |
| 87 | A Y U K O               | Y O S H I D A             |

# ARCHITECTURE



BEN SHARKEY GARRARD

BEN SHARKEY GARRARD

## LIVING IN THE RAIN

The weather and our overall climate have a daily effect on our body and mind. In Ireland our weather takes form in rain, powered by the strong south-westerly winds making it hard to escape it. As a result, we are pushed inside. This project is situated in the Limerick lanes as a strategy. Creating microclimates for people to experience outdoor comfort. This programme of public spaces leads to a four-storey car park. Acting as a public forum. It creates an

environment that allows us to experience the weather and deal with weather in a positive way. The car park retains its existing steel structure and concrete slabs. Its façade and roof are made from canvas and polycarbonate panels held together with light insertions of timber structure. Smaller rooms break the threshold of inside and outside. Which allows for the experience an off in between spaces and exposure to rain and wind in comfort.

CAITRIONA MOLONEY



CAITRIONA MOLONEY

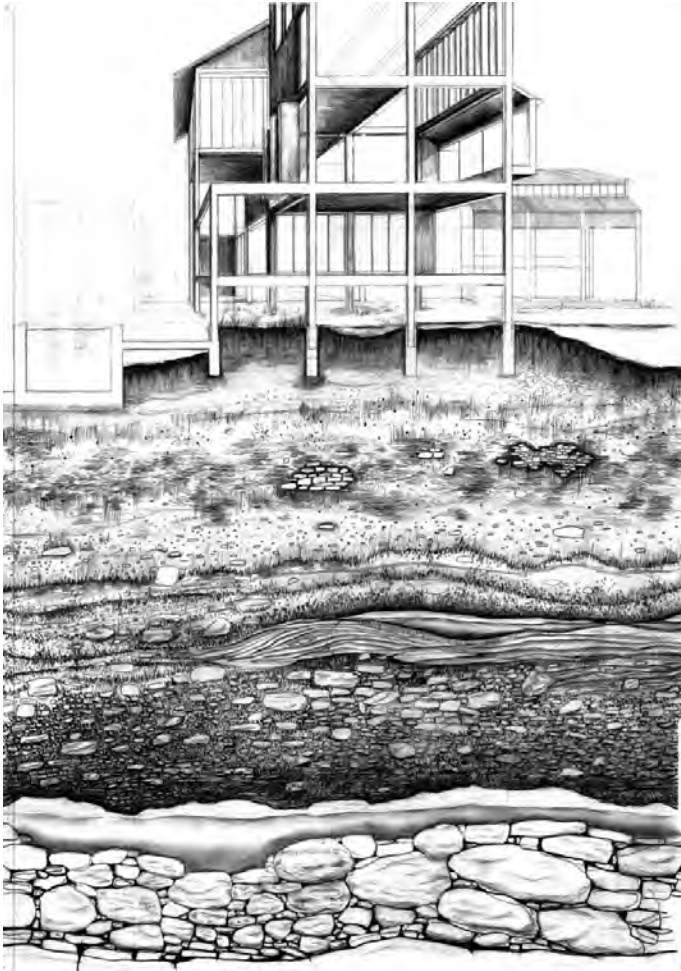
## FOR THE BIRDS

This project is focused on biodiversity with a particular focus on birds. I am interested in how human architecture can make space for non-human life. Arthurs Quay is an important public space within the city, its proximity to the river gives it potential as a bird habitat. In this project I have reconfigured the shopping centre and car park of Arthur's quay to build

this connection with nature. The Tesco has become a market hall, and the car park has become housing, the main atrium space has become a courtyard, with a dove cote. I have chosen planting based on hedgerows, using gorse and whitethom because of their huge value in creating habitat. The park and shopping centre are all built on made ground,

@CAITRIONA\_MOLONEY  
INSTAGRAM

CAITRIONAMOLONEY04@GMAIL.COM



CAITRIONA  
WINSHIP

CAITRIONA  
WINSHIP

## SUBJECTS OF THE GROUND

This thesis focuses on the ground and the ways in which society interacts with it. My project is located between Raheen Industrial Park and Loughmore Commons. Raheen is a large suburb located 5km south-west of Limerick city. Its location creates a point of tension, where urban sprawl meets agriculture, industry, and environment. My proposal is a low tech water treatment plant and public baths, a means of

cleaning the park's stormwater run-off before it enters a 1km canal that runs directly through Loughmore Turlough. The project consists of a series of timber and stone buildings that sit lightly on the ground, resting between two artificial mounds of earth. The objective of this project is to re-establish a lost connection to natural systems, a structure that does not impose but becomes an element of the landscape.





CAOIMHE  
CANTWELL

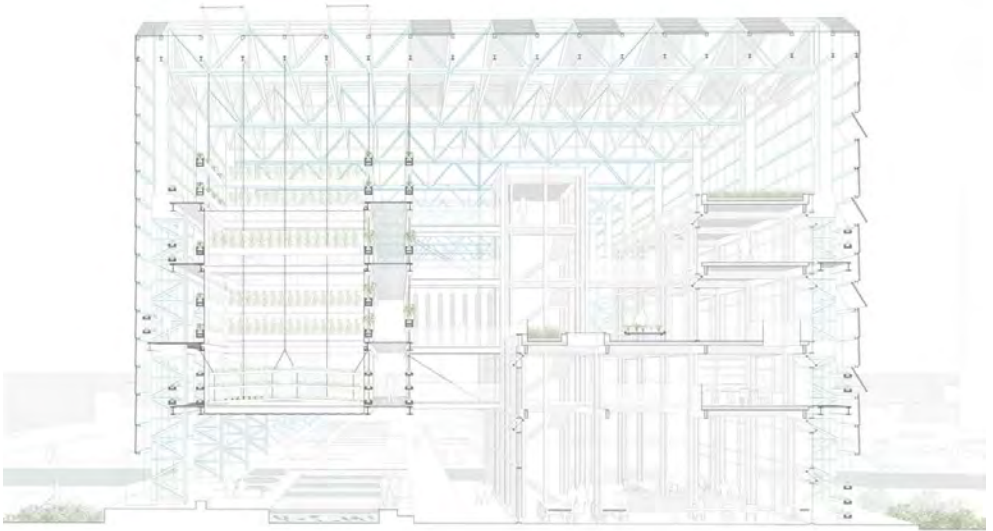
CAOIMHE  
CANTWELL

## VERTICALLY GREEN

My thesis interest began with consideration of how both rural and urban communities interact with our farmland and thus food production and consumption. My aim for this project is to find a progressive common ground between traditional methods of farming and reducing dependency on supermarkets, by enhancing the urban landscape with vertical gardens. This concept stems from the need to create sustainable urban farming and food security for communities within our cities in an environment that is changing promptly due to urbanisation and climate change. My locus and site is surrounding the Milk Market in Limerick City, historically known as Irishtown. 8

This area has a previous significant industrial and marketing past, which I would like to re-introduce to this part of the city. The programme of my proposal consists of three buildings linked around a central courtyard. I propose to build two new timber greenhouse like structures with the inclusion of the existing granary on Robert Street. Each building has a function such as production, economic and community all interconnected by bridges. The overall project aims to provide a relaxed and productive environment of how food is grown, harvested, sold, shared, cooked and consumed with the collection and reuse of rainwater a central factor.

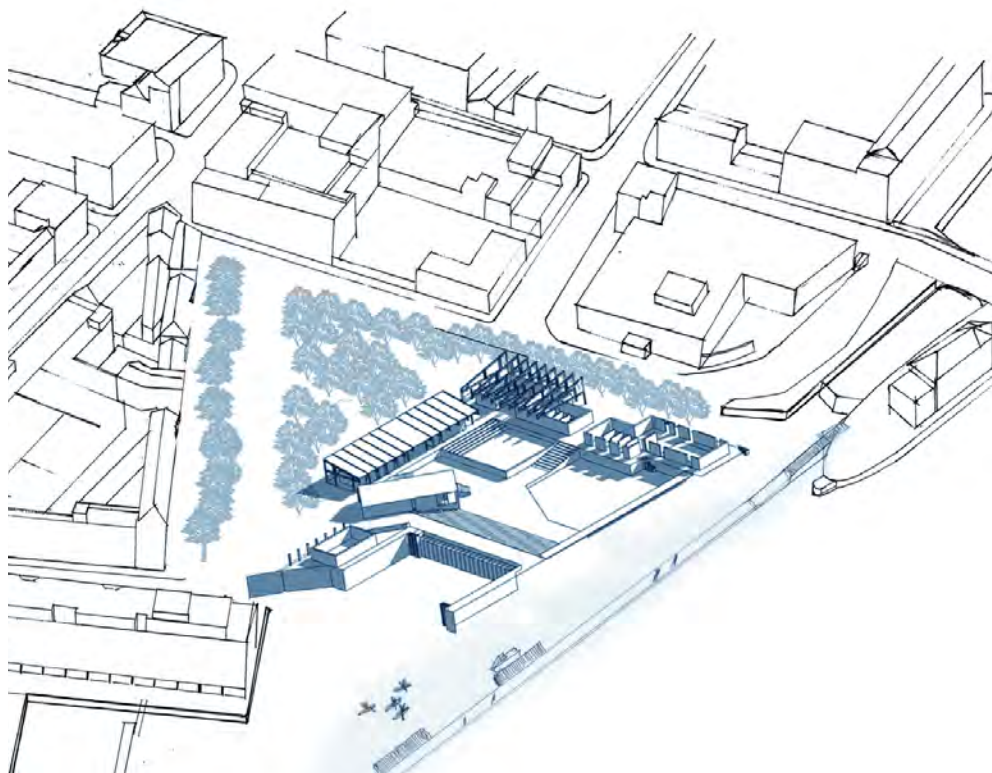




## RE-THINKING THE EDGE

This thesis investigates our relationship to coastal transitional spaces, as the marginal landscapes of our island, and how we perceive them as sea levels rise. The tension between delicate coastal ecosystems and heavy industry is evident on Tarbert Island nestled along the Shannon Estuary, where an oil-fired power station ceased production in 2023 and large-scale infrastructure has been made redundant. My proposal is a

sustainable food production facility which re-imagines the supporting landscape to restore the natural processes of the inter-tidal zone, creating a symbiotic relationship between the needs of people and the natural coastal environment. These interventions include an aquaponics farm suspended from the existing structure of the turbine hall, with a variety of educational and community facilities.



CIAN MCCARTHY

CIAN MCCARTHY

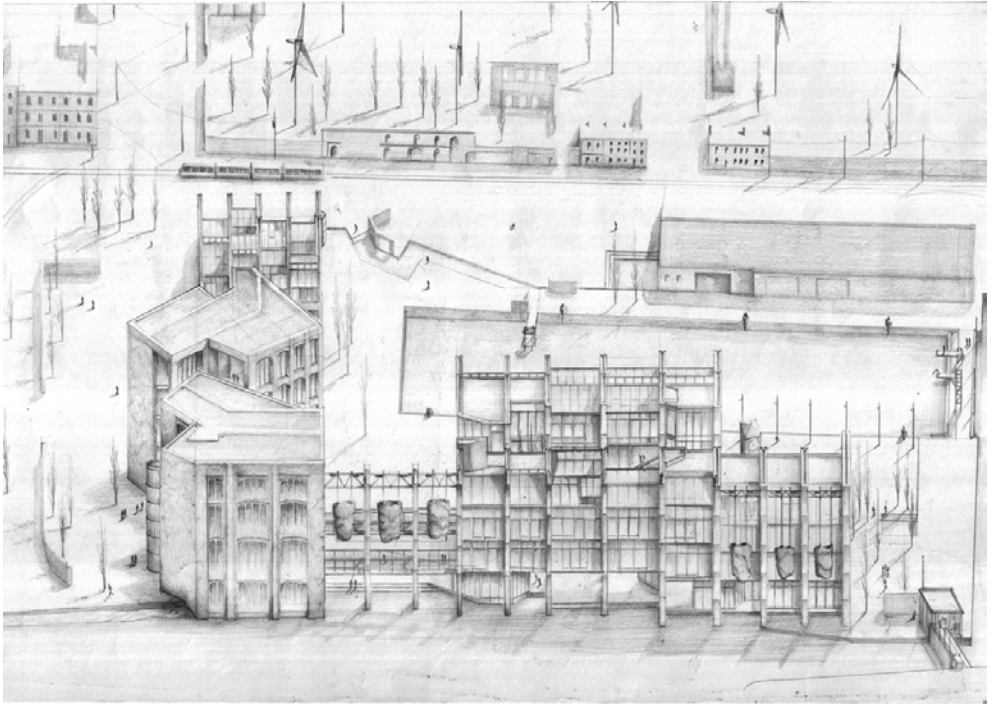
## BLUE SPACE : THERAPEUTIC SPACE

MCCARTHY1900@GMAIL.COM

*HEALTH AND WELLBEING IN THE URBAN REALM*

This thesis aims to provide amenity and infrastructure in Limerick city through the development and use of blue space, i.e. all bodies of surface water in the urban realm, to improve the experiences of the public in the present day. A question that needs to be asked is one which questions whether the so called hard edge of the river is as safe as thought, and whether a return to

a rivers edge which was seen historically would benefit the public realm and encourage a more positive attitude to be taken towards this powerful body of water in the city centre. A series of pavilion type structures encompassing spaces such as saunas, steam rooms, sheltered bathing areas and tidal pools aim to encourage a positive attitude towards the river



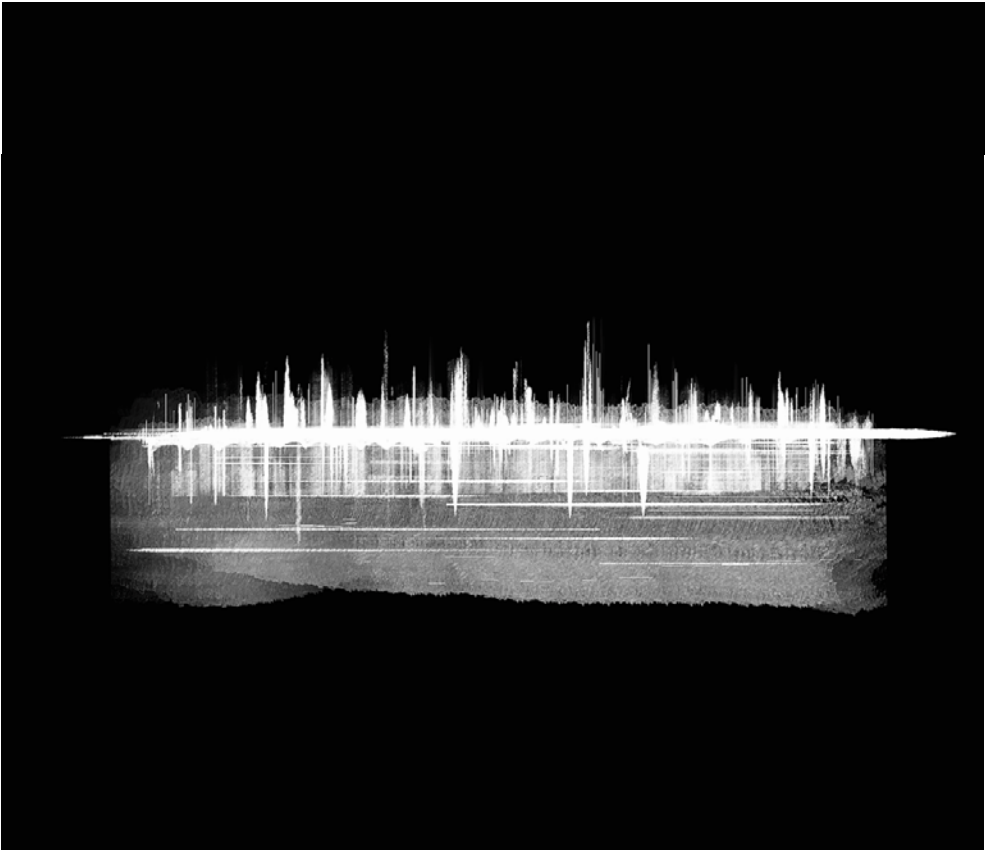
CIAN O'DONNELL

CIAN O'DONNELL

## CAMPFIRE

This thesis looks at the current societal framework encompassing the production and consumption of energy. It seeks to restore a veritable connection between people and energy both through physical form, and proposition of a new urban attitude. Outlined is a new urban ground that nucleates the production and consumption of energy within the existing city framework and seeks to re-establish the boundaries

between built and landscape. The building itself sits on the 'new' docklands of Limerick and programmatically functions as both civic baths, a research facility for renewable energy developments and a new meeting place to democratise the cities energy as-well as providing a place for discourse around energy and introducing a tether between the cities people and the energy they consume.

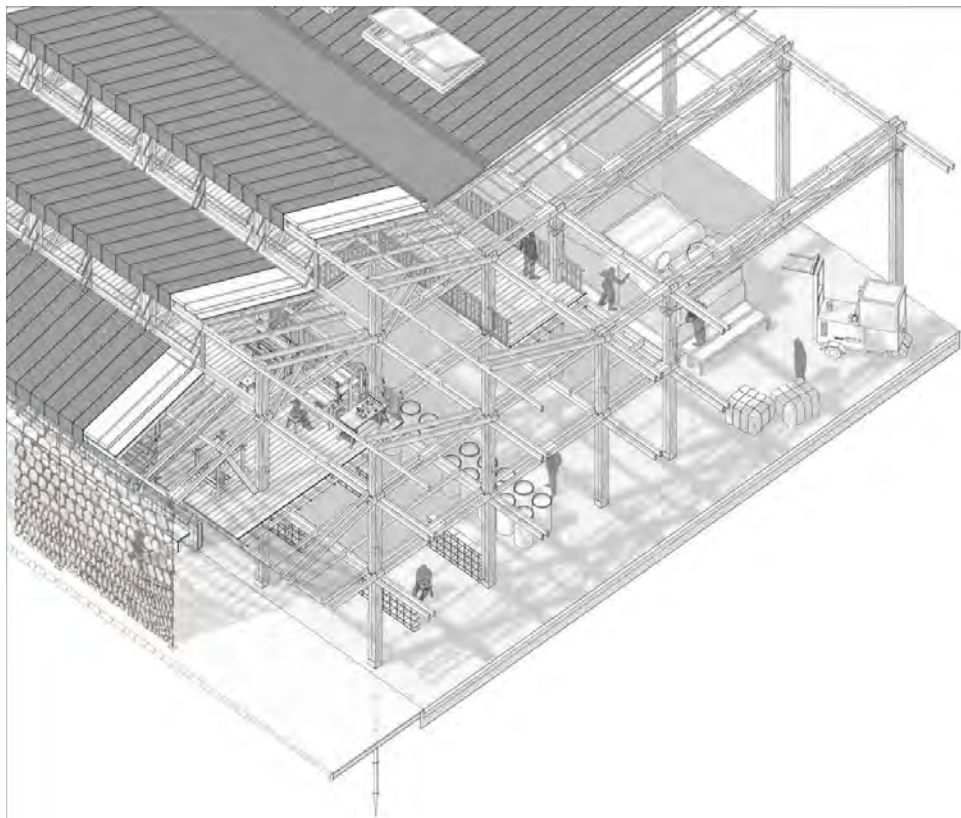


## NEGOTIATING SUBNATURE

CLODAGH.MEANEY00@GMAIL.COM

Negotiating Subnature' began with an interest ground, heritage, and a changing climate. This thesis delves into the intersection of heritage preservation, climate change adaptation, and ecological sustainability in Limerick City. Focused on the constructed landscape of the city and its evolving riverfront, the research explores innovative approaches to regenerate the heritage within the city in response to rising waters, while advancing environmentally conscious solutions. At its core, this thesis proposes the

establishment of an urban mycelium farm and design centre as a transformative initiative. Leveraging the underground spaces of Georgian cellars and vaults, the project harnesses the existing subterranean conditions within the city to cultivate mycelium, the root system of mushrooms. This mycelium is then processed above ground to create building materials such as insulation, façade panels, and bricks, offering sustainable materials for regenerating Limerick City's Georgian architecture.



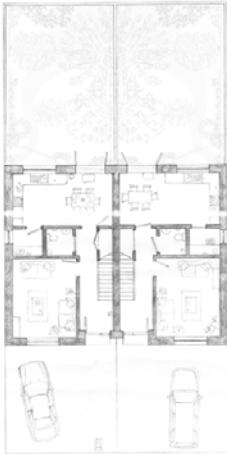
CLODAGH RYAN

CLODAGH RYAN

## OUROBOROS

Exploring circularity in the built environment, eliminating the use of toxic chemicals. Re-developing what is classified as waste into a resource and designing out waste in our processes. My locus is a brown field site located along the Park Canal in Limerick City. My programme's creating a circular industrial system. The scheme features a scouring facility to wash and process sheep's wool,

an undervalued bioproduct in Ireland. This scheme would facilitate the use of sheep's wool and encourage further developments of applications for sheep's wool through an innovation hub. The design avoids the addition of harsh chemicals and composites and works to retain the value of the materials, using solid timber members, wool, and other natural materials where possible.



13 & 14 Castlebrook Grove



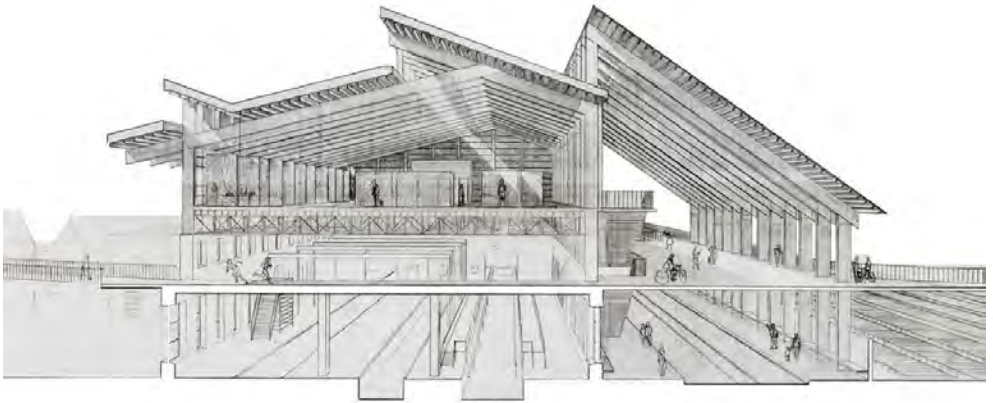
Bay 4 Kilmurry View

## GENERATIONS

This thesis aims to use the Irish Traveller community's multigenerational way of living as a model for designing a building in the backlands of the Georgian Quarter of Limerick where people can live surrounded by generations of their own family. Irish Traveller halting sites consist of large extended families, with grandparents, grandchildren, cousins all living together in the same place. As the families grow, so too does the architecture on the site, as they extend the existing buildings and add mobile homes and caravans. This allows the family to

grow in place. When comparing this way of living to the current 'settled' community in Ireland, the norm is the nuclear family; a group consisting only of parents and their children. As the children grow into adulthood, it is expected that they move away from the family, which is something that is now becoming increasingly difficult with the cost of living in Ireland. I believe that the multigenerational way of living that the Irish Travellers have held on to is quite successfully utopian. I aim to use it as a model for a new multigenerational way of living.



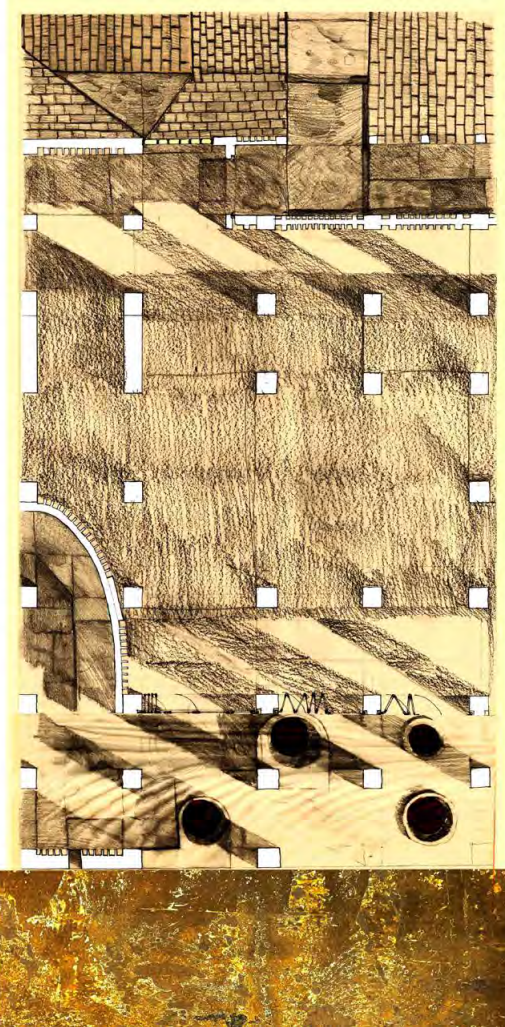


## NO PARKING HERE : APPROPRIATION OF PUBLIC SPACE

This thesis examines how developments in transport have changed how people move about, impacting both people and urban environments. Drawing on a variety of scholarly viewpoints and real-world examples, I investigate the transition from a personal, connected experience to one that is detached and impersonal. I use geography, urban planning, anthropology, and sociology to investigate how movement affects

space, society, and culture. By researching historical trends, contemporary concerns, and new ideas, I hope to highlight the complex relationship between mobility, urban development, fairness and sustainability. Finally, I call for a rethink of how we approach mobility to build more inclusive, eco-friendly, and vibrant cities that prioritise people's needs and interactions over their reliance on vehicles.





DAVID  
CONWAY

DAVID  
CONWAY

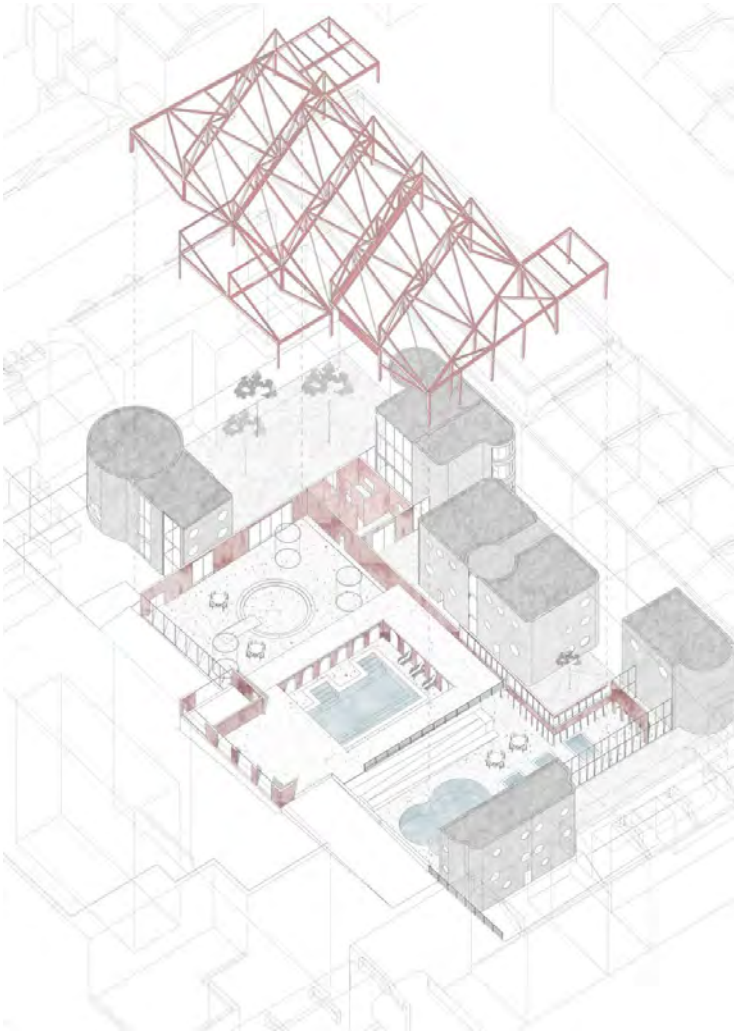
## NO ESCHATON!

*MORTALITIES IN ARCHITECTURE*

“As the world becomes more and more rational the shadow forfeits its place, since there is nothing to inhabit.” – Sverre Fehn

This architectural thesis is grappling with the abandonment of the design and consideration around death in contemporary public life. By facilitating rituals choreographed around procession it makes space for the shadows of those deceased

in the memory and imagination of those alive. It bookends the processional experience of Limerick city by offering a moment of departure from a gathering space at Johns Square and a moment of arrival to the River Shannon at Arthurs Quay Park. A grid of arched vaults is proposed which contain a water crematorium under the flood level, creating a new river edge whilst buildings above unravel into the park as spaces for gathering or solitude.



ELLA  
WHITE

ELLA  
WHITE

## MISFITTING

*UNRAVELLING THE TAPESTRY OF ABILITY*

The human form has long been at the centre of architectural praxis. As, the older sister of two girls who exist as an anomaly to the societal norm, I have been embedded with strong insights into a multitude of perceptual worlds. Encountering disability ultimately forces us to break from our perceptual illusion of the body's completeness and unbrokenness. How can

architecture be used to emphasise the unique experiences of people who are not usually given precedent in design. In the backlands of Georgian Limerick, the site sits in the block bound by Lower Hartstonge Street and Henry Street. This brief proposes to provide spaces that accommodate learning in all its forms, including cognitive, social and physical.



ELLEN  
MCNAMARA

ELLEN  
MCNAMARA

## DEARGTHA

*REINVIGORATION OF INFRASTRUCTURE THROUGH HISTORICAL AWARENESS*

The proposed Water Treatment Facility aims to encourage an awareness for our natural resources while utilising aspects of the infrastructural site as amenities for the local community. Situated on the edge of the Parteen Basin in the Pollagh area, this development will align with existing large infrastructure on the river as it passes through Parteen weir through the Ardnacrusha Power station and into Limerick City. The site will feature a constructed wetlands that will attenuate excess

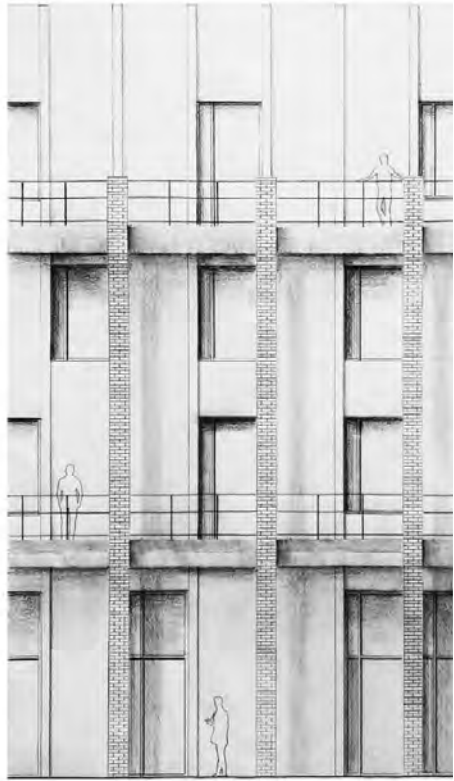
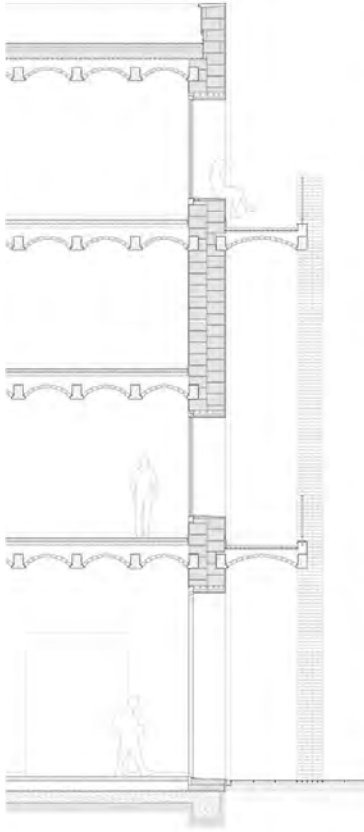
flood water and support the local ecosystem while connecting a route to the current successful Pollagh walking trail. While the Water Treatment Facility in the primary body of structure will process and distribute the water to areas with water shortage difficulties. The additional wing includes public amenities of a series of pools, saunas and steam rooms. Additionally featuring cultural spaces of a boat building and workshops for traditional cultural practices. Encouraging all forms of connection the



## RECONSTRUCTING PERMANENCE

Despite their long-lasting, durable virtues, traditional modes of building have left us with formidable targets of demolition, contributing largely to global warming and triggering vicious cycles of the production and demolition of robust materials. This thesis, based in the Ted Russell docklands and bookended by two significantly static structures – Ranks Silo and Bannatyne Mills - hopes to challenge this system, and proposes a more innovative approach to

how we can build. By rejecting the use of heavyweight materials that are resistant to change and embracing the more temporary nature of flexible, dismantlable, and modular design methods, we can sustainably allow for the graceful evolution of a buildings form and function over time. My project offers a framework for accommodating multiple uses at a large scale through adaptable timber modular units supported by a demountable steel circulation system.



finniankelly19@gmail.com

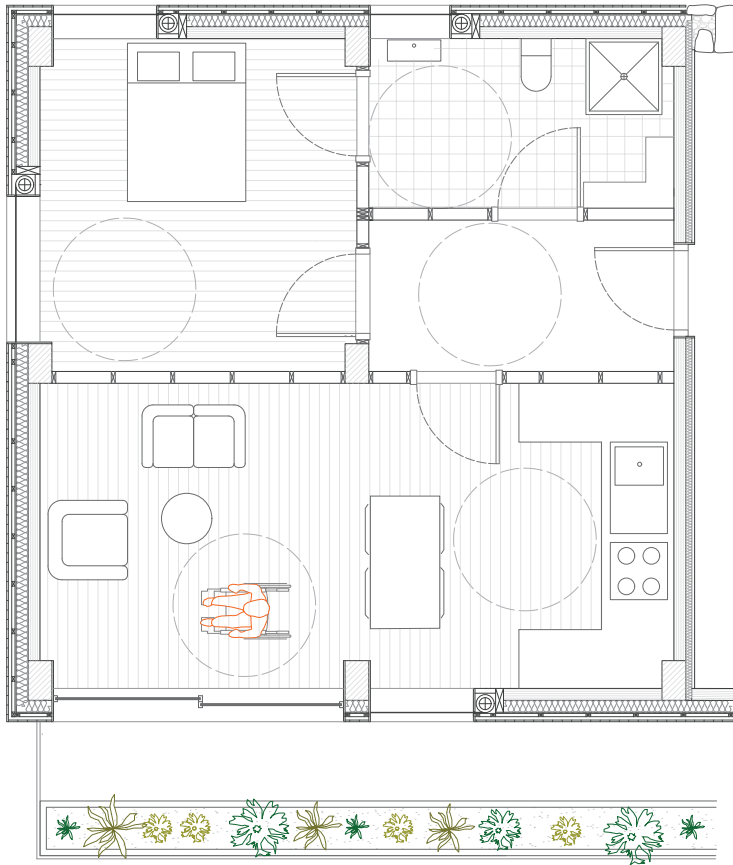
## COMFORT : A UNIVERSAL GOAL

finnian.kelly  
INSTAGRAM

My thesis aims to challenge and redefine our concept of comfort as both a physical and psychological entity in contemporary architecture. This proposition aims to challenge how we construct comfortable, sustainable living environments while simultaneously reviving a communal space within the urban landscape. I have chosen to use terracotta block, brick and concrete to construct a robust, structure that relies on minimal insulation and services.

Instead, it will depend on the energy generated from the collective presence and activities of the community and residents. The site I have chosen is the former site of the Matterson Bacon factory located along Roches St. in Limerick city. The proposal's programme consists of a high-density housing project accompanied by commercial and communal amenities on ground floor as well as a covered market space, public garden and communal work yard.

# ARCHITECTURE



## RETURNING TO THE ORIGINS

TORYAL1@GMAIL.COM

*CAN WE REVISE THE TRADITION FOR THE NEED OF 21 CENTURY?*

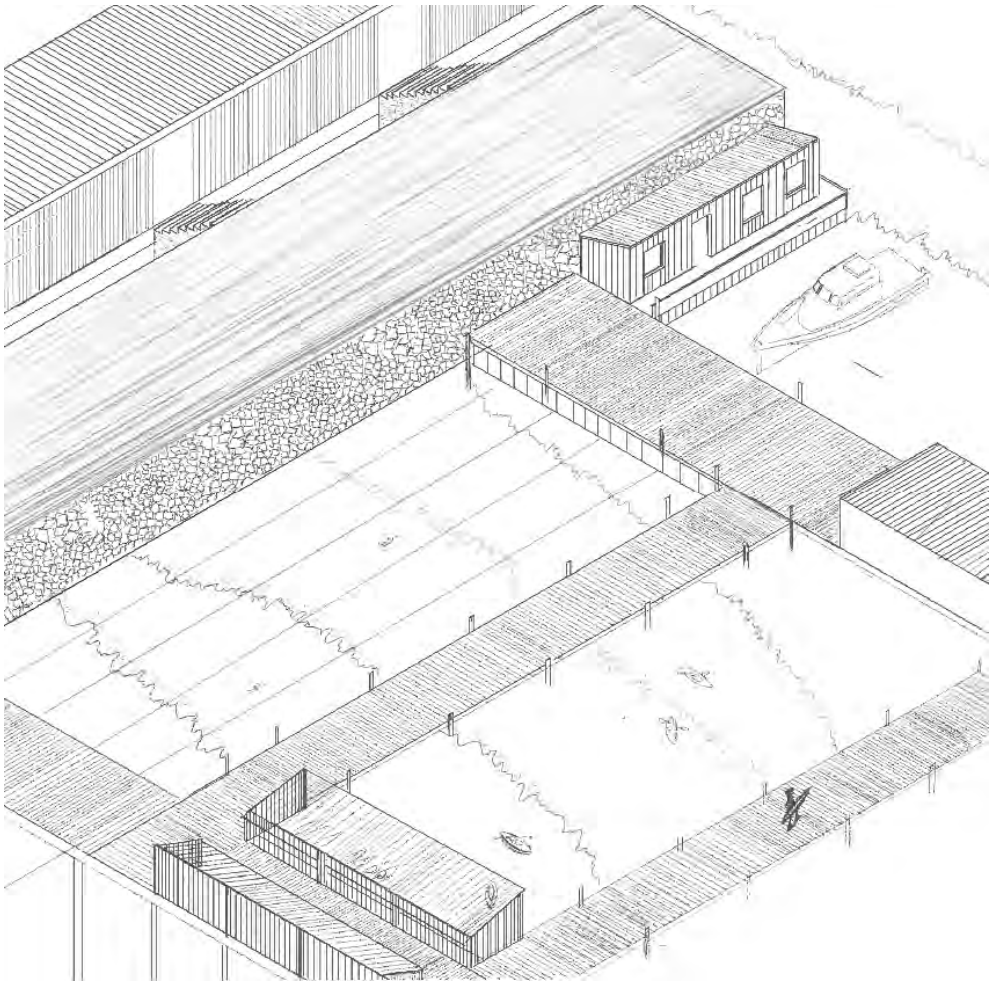
My thesis is about rethinking our built environment and how it treats our ageing population. We are moving more towards a generation of older people that require more personal effort growing old than in a traditional setting where care happens within the family. The need to lead a fulfilling life regardless of our age or any physical, mental and economic constraints we might face transcends time thus I am proposing multigenerational housing in the car park on King's Island at Saint Mary's Park. My

proposal connects the healthcare centre, Catherine McAuley School and the Villiers Alm Houses. It is a community-led project where various functions take place on the ground floor such as a library and café and sheltered seating spaces to socialise that are accessible not only to the residents but also to the surrounding community. The apartment units on the upper floor are designed with accessibility in mind to maximise social interaction across generations.



# ARCHITECTURE

GRAINNE  
MEEHAN



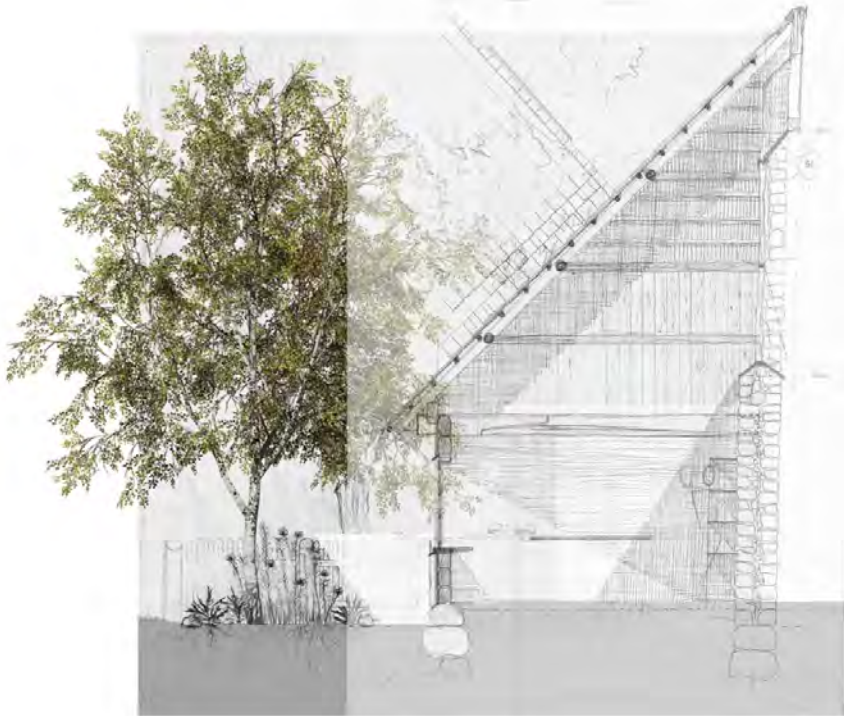
GRAINNE  
MEEHAN

## REVIVING THE ESTUARY

The focus of my thesis is based on the revival of the Shannon Estuary as an area of production as it once was previously. The objective is to alleviate pressure on our roads, while also bringing back the connection we once had with our coast in Ireland, as can be noted through Irish Mythology. I also wished to create an industry to encourage a 'healthy estuary' unlike many of the industries presently located along the estuary. My

site is located on the Shannon Estuary about 30 kilometers from Limerick City at a place called Ringmoylan Pier. The Pier structure is located just outside Pallaskenry Village and was built in the 1830's with its function being a trading point between Limerick and county Clare, where Linen came from Clare and was bleached in Limerick as well as a turf trade and emigration point





GRETA  
RADŽIŪTĖ

GRETA  
RADŽIŪTĖ

## LOCAL CONSCIOUSNESS

[RADZIUTEGRETA@GMAIL.COM](mailto:RADZIUTEGRETA@GMAIL.COM)

This thesis looks into the idea of a transitional sanctuary place for creative work within an urban context. This transition place is nestled in the old dock yard site. A place of contrast, an industrial relic surrounded by wilderness, within a much bigger residential side of Limerick city. The site offers a canvas for a day and night cultural place. The envisioned program encompasses individual studio spaces, a fabrication laboratory within an existing steel shed, and

a versatile gathering space, transforming into a theatre by night, all nestled within an urban forest of birch and spruce. Embracing a palette of natural and reclaimed materials, including spruce logs, rammed earth, and reclaimed iron, the structures blend harmoniously with the surrounding environment, featuring spruce log studios and a rammed earth theatre supported by reclaimed material trusses, constructed with scaffolding tubes and timber.



## A SEARCH FOR CLARITY

JAMESKENNEDY2100@GMAIL.COM

*EXPLORING THE SIGNIFICANCE AND RELEVANCE  
OF HISTORICAL RUINS IN MODERN IRELAND*

My thesis explores the role of the architect and the building process. In the past two centuries, architecture has been driven by technological systems and mass reproduction, leading to a disconnect between architects and the public. I aim to connect back to the simple act of creating space through its process. My focus is on Kings Island in Limerick City, where I propose a community self-build project. The process of the building is the thesis, to create a communal workspace that

fosters community understanding of space and offers an opportunity for creation. The primary structure will be a simple knee-beam construction. The facade will utilize waste materials from the site and surrounding areas, allowing individuals to create a personal connection to the building. The project is not intended to be a landmark for the city but rather a space for creation and community engagement. It emphasizes the architect's role as a teacher, organizer, and builder.



JAMES  
MCKENNA

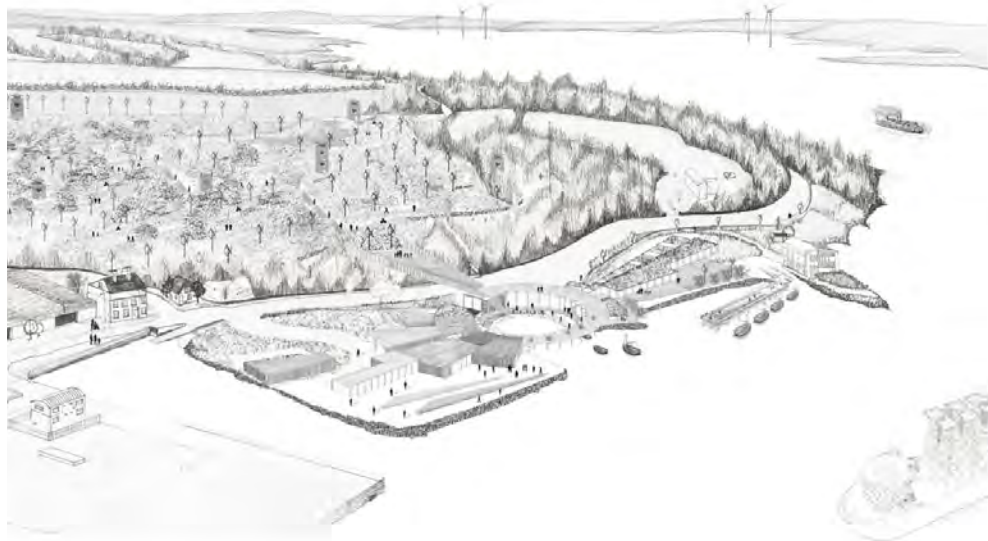
JAMES  
MCKENNA

## RECLAIMING OUR CITIES

*PUBLIC SPACE AND ARCHITECTURE IN IRELAND'S RURAL TOWNS*

This thesis investigates the decay of rural Irish towns, and how our increasing dependence on technology is responsible for the loss and neglect of our rural communities. It explores how public space and architecture can be revived in Irish towns by reclaiming derelict buildings in the heart of these towns. The chosen area of investigation is Bruff, a small town in east county Limerick in the southwest of Ireland. While growing in population Bruff

has seen a significant loss in community amenities, most notably its secondary school, courthouse, and bank. In this design process, an investigation is carried out on the vacant properties in the town and the potential accommodation of these sites. The intention and aspiration of this thesis is to create opportunities for commercial and social interaction in the town and act as a typology for all towns across Ireland.



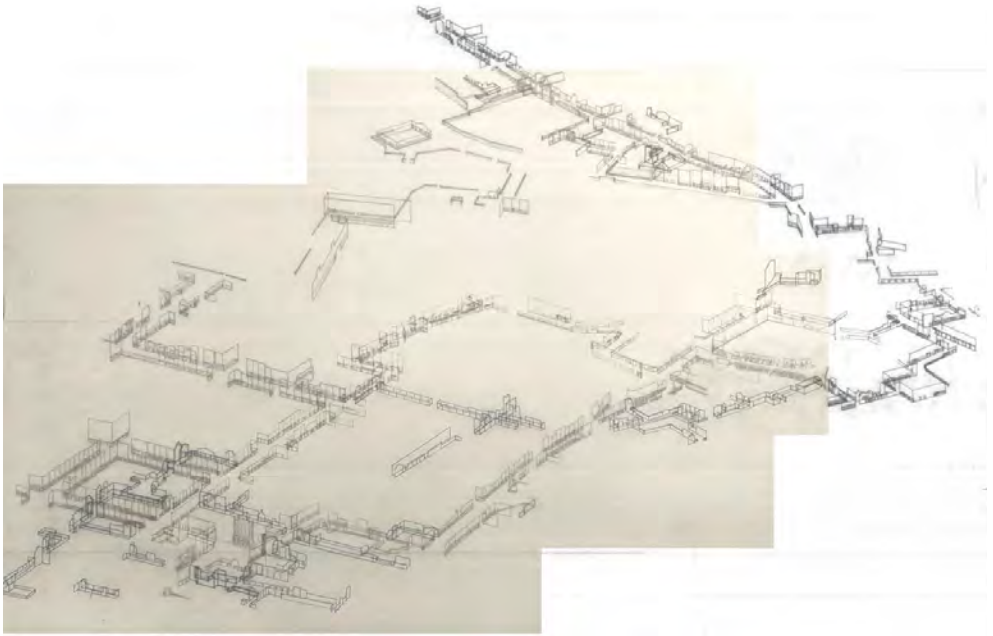
JULIANNA  
FLYNN

JULIANNA  
FLYNN

## WINDS OF CHANGE

This architectural thesis is situated in Foynes, Co. Limerick. The project capitalises the region's designation for offshore wind development. This thesis addresses the integration of renewable energy practices into architectural design while fostering community engagement. The project responds to the lack of public access to Foynes' extensive waterfront, despite its rich maritime history and proposed wind developments. A multifunctional hub serves as the centrepiece, accommodating community needs, the

offshore wind proposal, and Ireland's green future. Featuring a maritime pavilion with exhibition spaces, lecture rooms, a café, and yacht storage, the hub also includes a 220kV substation for connecting offshore wind energy to the grid. Additionally, facilities for turbine repair, manufacturing, and formation enhance the project's functionality. The design, organized on a radial grid, culminates in a wind park with vertical axis turbines and rammed earth follies, providing both energy and inviting public spaces.



KIERAN  
GUINAN

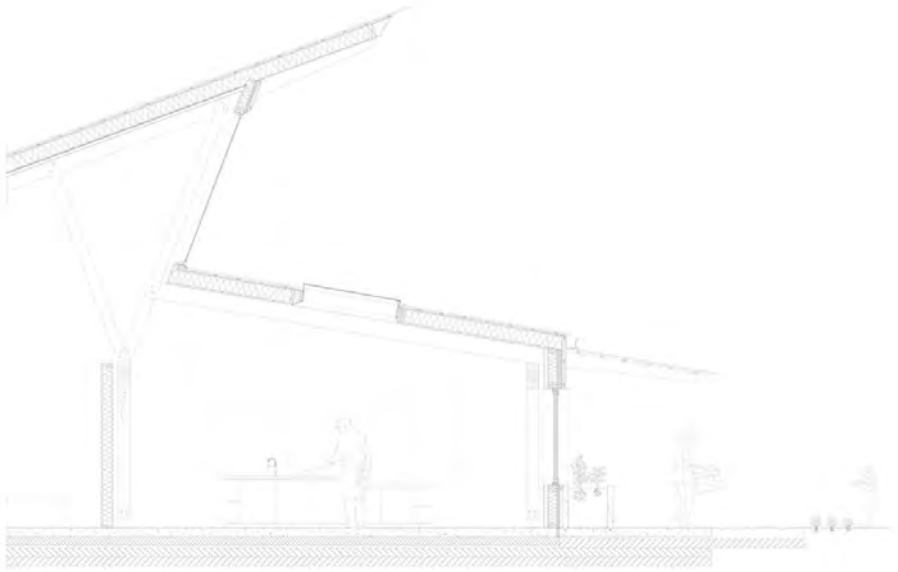
KIERAN  
GUINAN

## MAKING PLACE

### *PLACES OF EXCHANGE*

This thesis proposition looks to reactivate the Georgian blocks by exploring Limerick City's laneway system. This thesis stems from my interest the derive. To derive is to 'drift'. The theory of the derive and its importance in how it encourages authentic exploration. Particularly how the derive allows individuals to explore a new experience of place, I intend to use this in a way to re-imagine the Limerick City backlands. My locus is within a series of Georgian Blocks in Limerick City. However My scheme aims to reconnect this alternate movement

system within its context through the addition of re-instating a structure that will embrace each blocks former function. This proposition is centered around making a series of spaces which will inhabit the blocks and offer a better experience within the city's context. The series of spaces introduced to the block will aim to celebrate the sites conditions while also attempting to thread an inviting laneway system through the blocks to stitch together the complex series of laneways within the immediate context of its locus.



MATTY WALSH O'GRADY

O'GRADY WALSH MATTY

**HARVESTING KNOWLEDGE**

*Designing for education through food and the revival in urban farming*

My thesis topic examines culinary education, with an emphasis on the younger generation and I am exploring it via the resurgence of the urban farm. I hope to reconnect the younger generation with a new relationship towards food and lost traditions. The programme will bring about spaces that are in tune with growing, living and most importantly learning in the form of a culinary school, gardens and internationally diverse food market. Limerick city is steeped in agricultural history and the production of food. Known as 'Pigtown', getting its name from the many bacon factories it once contained. The Milk market is a place of trade, tradition, and social engagement in the heart of the city which still operates today less the livestock trade by independent farmers. The locus for my thesis is situated in the city, embedded in an area of diverse culture, education, and public

transportation. I hope to use these factors to my advantage in creating a sustainable model for use well into the future. The site runs alongside a portion of Roxboro road and is adjacent to an education campus of schools consisting of two primary schools, two secondary schools and a further education college with a daily attendance of over one thousand students. Colbert Station, including the train routes and the newly redeveloped Íarnróid Éireann bus station, are directly adjacent to the site. The remaining zones that frame the site are occupied by private residential buildings, which will be a key feature in benefitting the community aspect of the project. These amenities will facilitate the creation of a dynamic communal space incorporating leisure, knowledge transmission and multicultural engagement through the medium of growing and food.





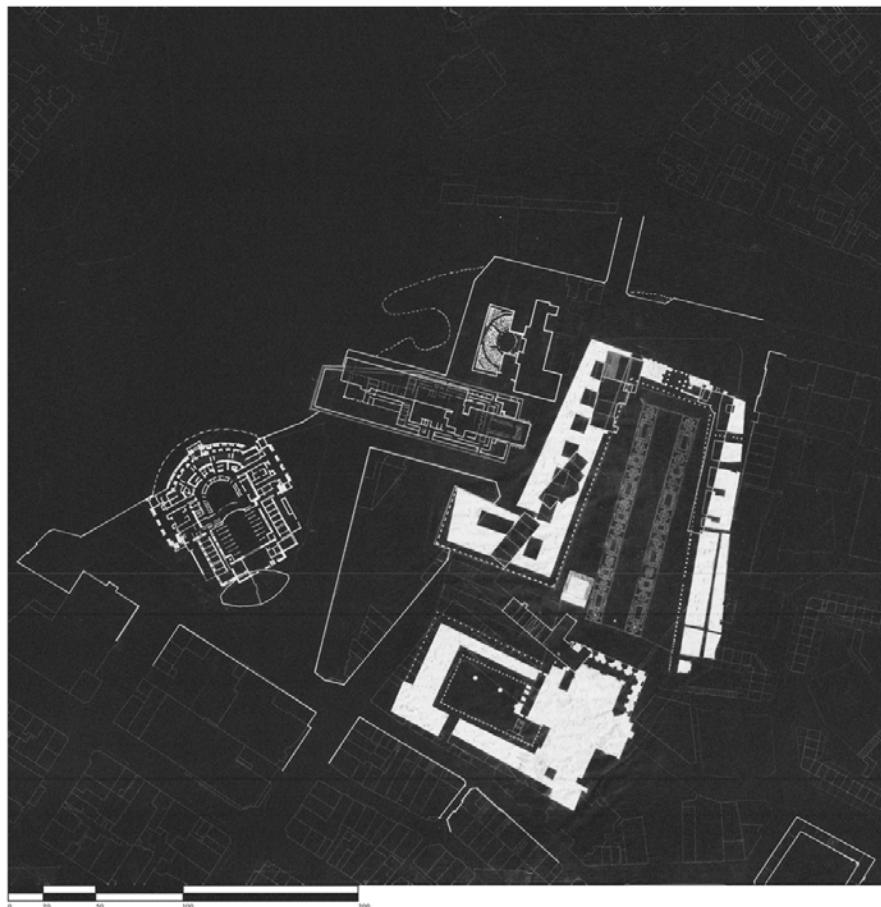
## FROM EXTRACTION TO REGENERATION

*REIMAGINING POST-INDUSTRIAL LANDSCAPES*

My thesis hopes to re-evaluate our constant need for progress at the cost of our landscapes by visualising the changes we have caused by our abrasive extraction practices. With the current zeitgeist moving towards a post-carbon future these industrial spaces will ultimately become redundant. This research proposes adaptive reuse as a key to achieving sustainability in architecture. The project is situated in the future afterlife

scenario of a post-industrial landscape, namely Mungret Quarry and Cement Factory, and seeks to reveal human domination over nature and its role as an exploitable resource. I propose to hand over the site back to nature and transform it into a bio-campus consisting of a re-wilding program with facilities needed to regenerate nature on site as well as labs, bio-manufacturing, and a research centre.

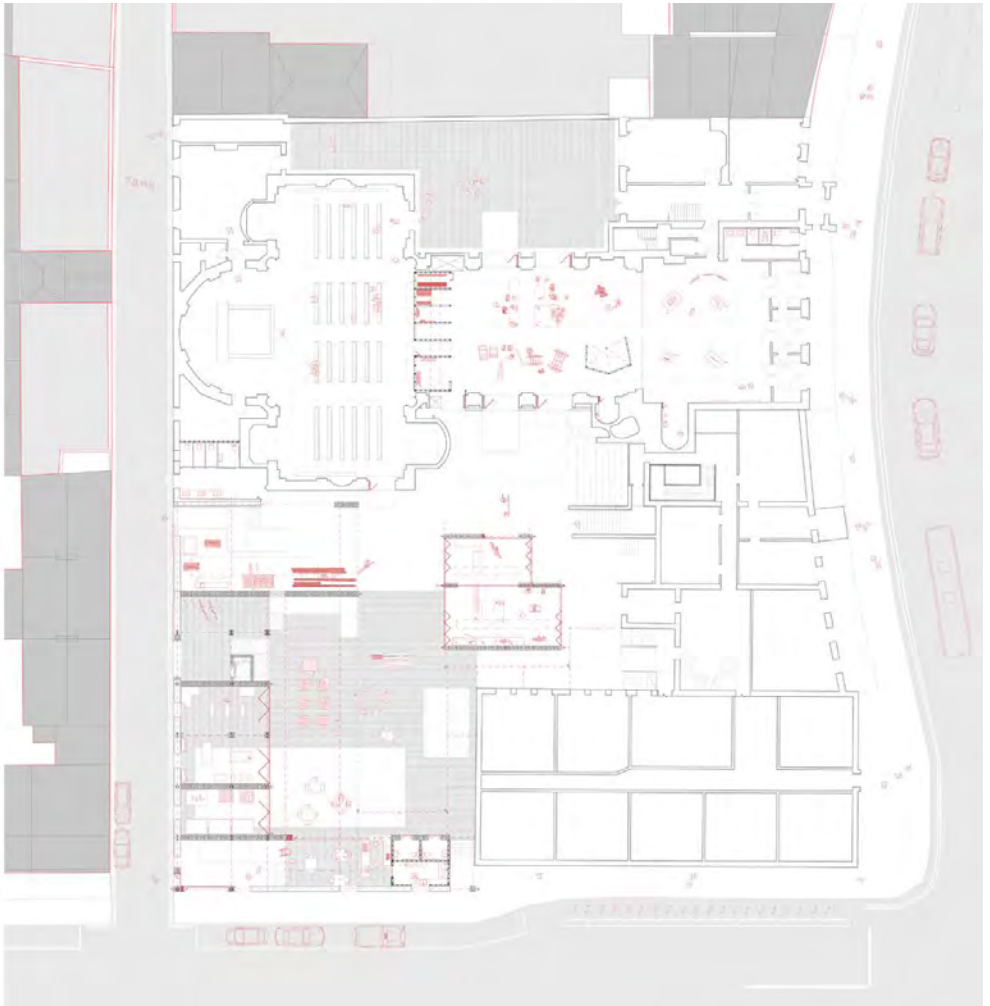




## MODUS MOMUS

The Opera site in Limerick city has had a turbulent history of development and demolition culminating in the current plan consisting of mostly commercial and office space in the heart of the city. There has never and will never be an opera house or theatre space on the site despite the name. The site has seen a significant amount of demolition to make way for the new office space. My thesis examines the historical context and demolition of the site and proposes an opera house to be constructed on the site. The full site proposal includes the opera house itself, a separate box office and

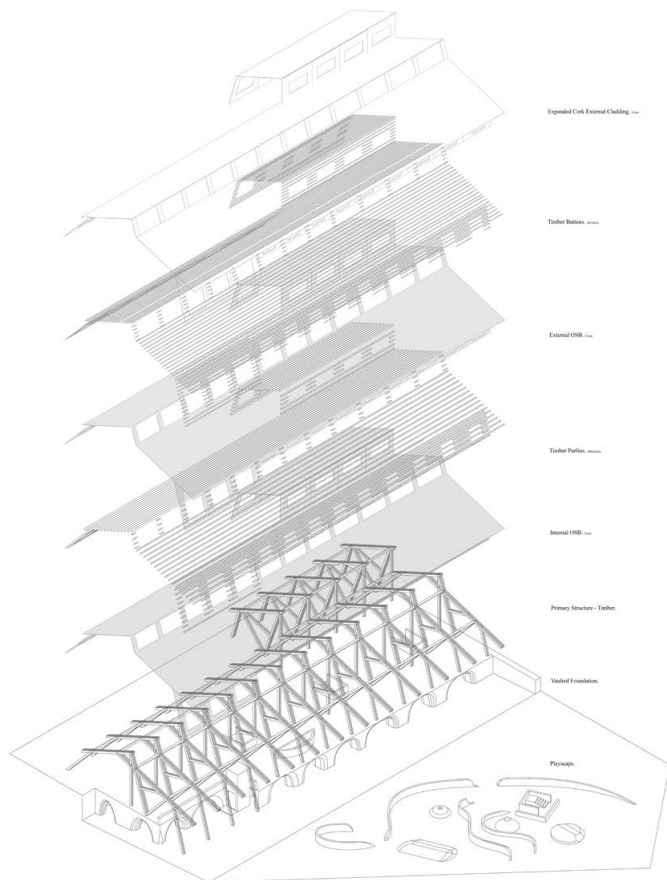
two bars, a library, lecture hall and rehearsal spaces. You enter the site at the box office alley on Rutland street and make your way into a large public space enclosed by the remnants of the Georgian context alongside the proposed new builds. You approach the opera house up a long sloped piece of ground until the building stands over you with a forest of columns that guide you into the building. The stage of the theatre runs from inside you outside with a large opening on bank place that brings the performances outside into the city and makes opera a public act for all.



## A PALIMPSEST OF RENEWAL

This thesis addresses the longed revitalisation of the neglected Georgian heritage buildings through a mode of material sorting and reuse. Situated in the lower half of the Georgian Newtown Pery development, it integrates existing institutions such as the Sacred Heart Church and the Limerick Tutorial college. The programme takes place within a realm of brick vaults extracted from the

city it situates itself in. It includes workshops, a large church assembly hall, and material storage facilities, emphasizing the reuse of both salvaged and redundant materials sourced from the surrounding areas. Redundant materials become the most important subject and the site becomes a hub or a spoliun that entices the city to repair itself on smaller scales.



SEAN FINUCANE

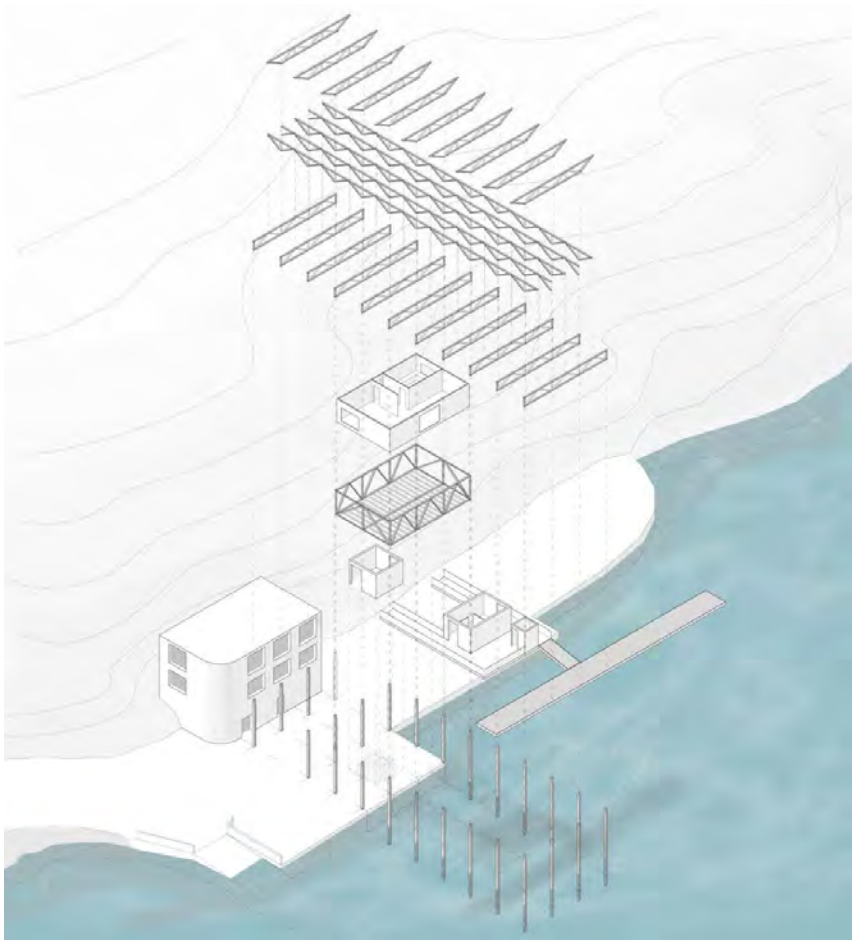
SEAN FINUCANE

## THE LAND CAME FIRST

SEAN\_\_FINUCANE  
*INSTAGRAM*

This thesis delves into the interplay between the permanence and non permanence of construction materials within our ever-evolving landscape. It seeks to address the question: How should we approach building in a context where the environment is in a state of constant change? The essence of this inquiry lies in reimagining our relationship with materials, proposing a shift towards reuse and a deeper reliance on what is readily available in the environment. The

materials I am using are solid timber, stone, cork and rammed earth. The site I have chosen is beside Knockae primary school, ballyneety, Co. Limerick. The proposal's programme consists of a trade school which functions almost as an intermediate space for young people leaving school and beginning a trade. The school is to function in a way whereby the students will get to learn about various different trades and materials before choosing a pathway.



SIMON  
MULLARKEY

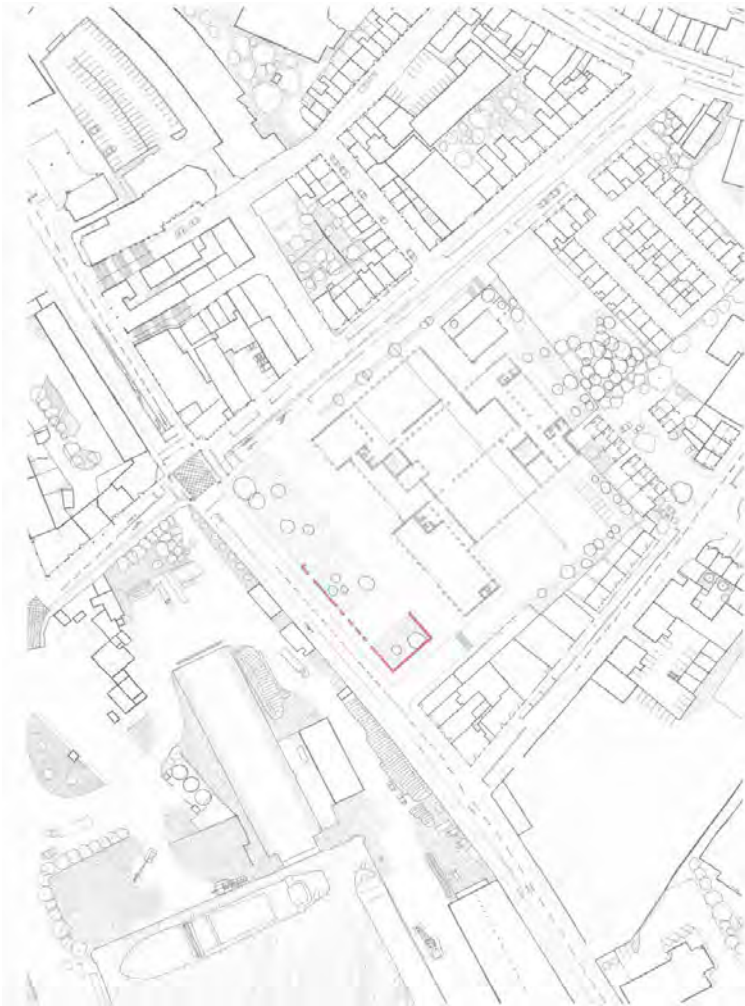
SIMON  
MULLARKEY

**TURNING THE TIDE**

MULLARKEY28@GMAIL.COM

My thesis is focusing on the topic of climate change, in particular the issue of flooding and its impacts on small communities and settlements along the coast of Ireland. I'm interested in how we can design buildings to be capable of living with flood water, rather than building to avoid it. My project is situated in the town of Askeaton in west Limerick. My site is located at the old boat club to the north

of the town. The programme of the building is a new boat club to replace the current one, a floating pontoon, a coast guard station and a space for the public. The building consists of a concrete mixed with straw structure, with a timber roof structure protruding out into the river, with rooms built into the trusses of the structure. The building is designed to flood without being damaged.



TOMAS  
MCKENNA

TOMAS  
MCKENNA

## ADAPTIVE PERMANENCE

@TOMASMCKENNA  
INSTAGRAM

My interest lies in the transience of the city, a typology of demolition and destruction and a never-ending need to remove the history of our built environment. This thesis is a study of the urban condition that focuses on the revision of the built urban environment and the attempt to move towards the creation of more adaptable and permanent urban context. My chosen locus, located at the

crossing of The Dock Road and O'Curry Street, is the Limerick Gas Works site situated at the southern edge of Limerick City centre. On this site, I am proposing an industrial building that will become a pilot factory for textile recycling in Ireland. The building will include a number of office and design spaces as well as retail spaces for the sale of items and materials recycled.

PRODUCT DESIGN  
& TECHNOLOGY





AIDAN BARRY

AIDAN BARRY

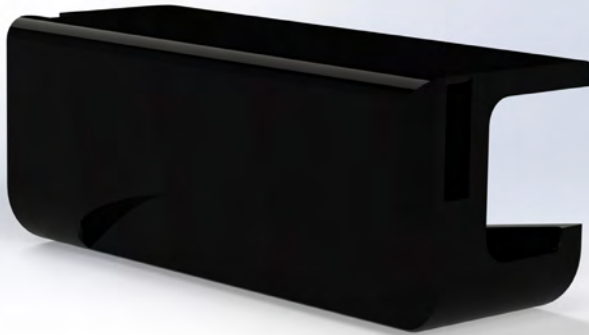
## HandyMed

[aidanbarry2000@gmail.com](mailto:aidanbarry2000@gmail.com)

Introducing HandyMed, the innovative solution revolutionising first aid accessibility. In a world where traditional medical kits pose challenges for individuals with limited hand mobility, dexterity issues and injuries, HandyMed steps in. Injured individuals, the elderly, and those with disabilities often struggle with conventional kits, facing barriers in emergency response. HandyMed's modular design ensures easy one-

handed access to essential supplies, tailored for diverse user needs. By providing intuitive usability and customisable organisation, HandyMed empowers users to swiftly address medical emergencies with confidence and independence. Say goodbye to frustration and delays - HandyMed ensures prompt and efficient first aid, promoting safety and peace of mind for all.





DAVID BLACKWELL

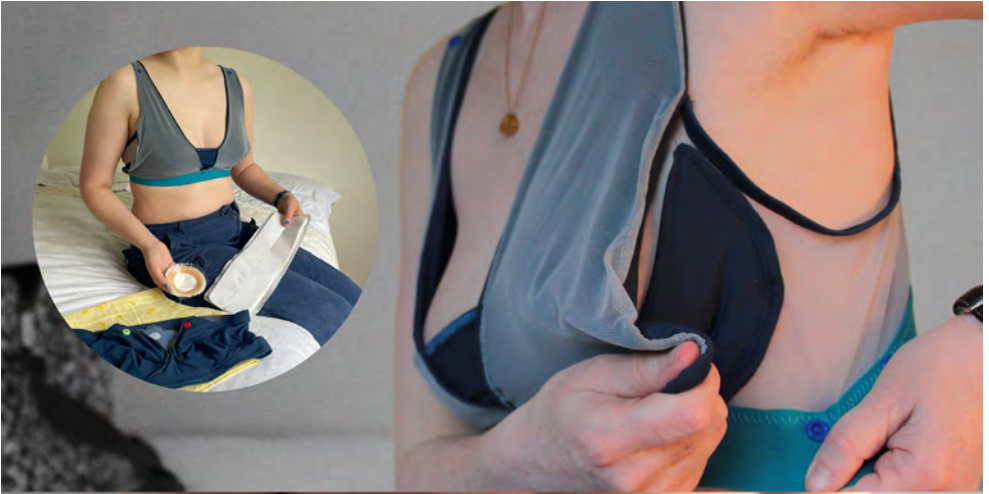
DAVID BLACKWELL

## Ayda

[daithiblackwell2k16@gmail.com](mailto:daithiblackwell2k16@gmail.com)

Ayda is a visual aid tool for those with hearing difficulties. Its purpose is to help the user stay informed in conversations in hard-to-hear environments by displaying live subtitles to the user whilst they are talking to others. This allows the user to combine hearing and visual

information to better determine what is being said to them. This helps the user feel more independent and allows for more effective communication. The Ayda device attaches to any glasses frame, allowing the user to customize it to their own liking.



LOUISE BLAIR

LOUISE BLAIR

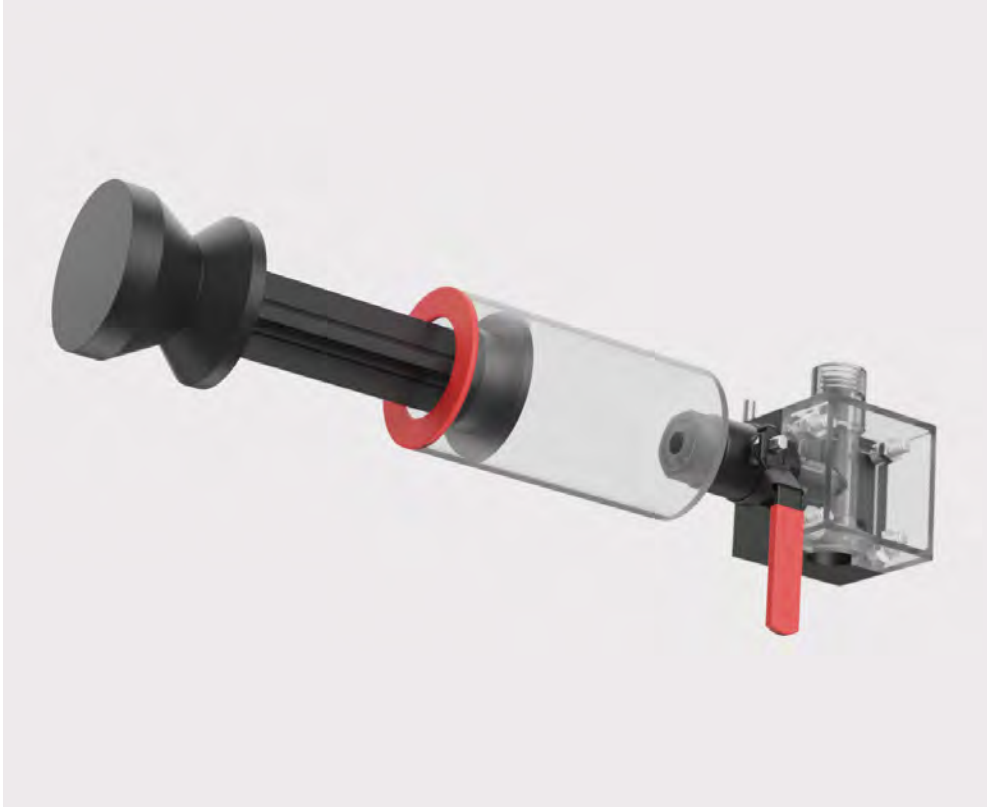


## NurtureHer

Louisejblair2001@gmail.com

NurtureHer is a collection of lingerie and breast pads to support and empower breastfeeding mothers, from the early days to extended breastfeeding. The daytime bra includes a more attractive style; an attachable feeding cover; adjustability in cup size; and opens from the bottom of the cup for easier access and more discretion. The nighttime bra is made of a soft, breathable fabric,

and has a strapless design to prioritise comfort. It includes pockets for cooling/heat pads, which provide a variety of benefits to a breastfeeding mother, as well as different buttons to remind the user which side was last fed on. The self-adhesive breast pads and adhesive clothing strip protect clothing without the user having to wear a bra.



CRÍOMHTHANN BRENNAN

CRÍOMHTHANN BRENNAN

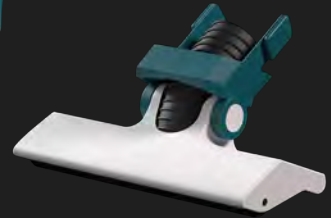
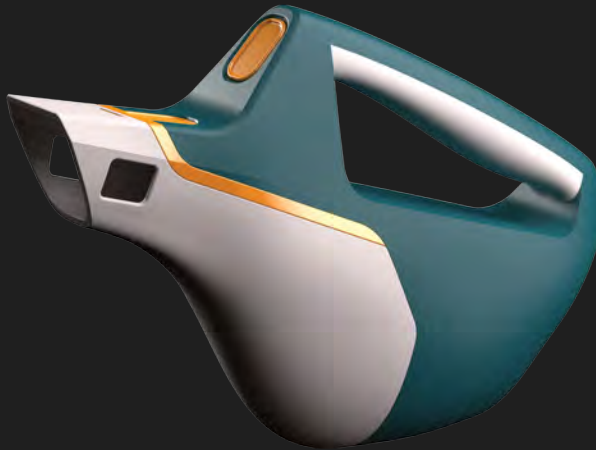
## Water Wise

[criomhthann.brennan1@gmail.com](mailto:criomhthann.brennan1@gmail.com)

Nearly 30% of a household's water use happens within the bathroom, showers being one of the main contributors. We can all relate to going for a shower, turning it on and getting blasted with cold water. Not ideal, so what do we do? We wait a few minutes, perhaps brush our teeth in the time it takes for the water to warm up. Meanwhile though, litres of water have gone down the drain. How do we

solve this problem? Meet WATERWISE, an easy fit solution compatible with electric showers which aspirates the excess water in your shower system and reintroduces it slowly. Suitable for everyone, this system not only delivers hot water faster it will also help keep your utility bills low.

Fresh  
pet



ALEXANDER BROPHY

ALEXANDER BROPHY

## FreshPet

[ajnbrophy@gmail.com](mailto:ajnbrophy@gmail.com)

FreshPet addresses an unmet need, often overlooked by many pet owners, by tackling indoor air pollution caused by pets shedding fur and dander (microscopic skin particles). Left unaddressed, this issue can lead to respiratory impairment and long-term health complications, such as chronic allergies and exacerbation of respiratory conditions like asthma. This handheld vacuum design prioritises ergonomics and efficiency, offering two specialised

attachments. The first attachment is designed for cleaning surfaces where pet fur is deeply embedded, providing an effective solution where traditional methods fail. The second attachment is a unique pet grooming tool with retracting bristles, collecting fur and dander during grooming, while also preventing mats and tangles. By reducing pet-related airborne particles, FreshPet enhances indoor air quality and ensures pet comfort.



ORLA CARBERY

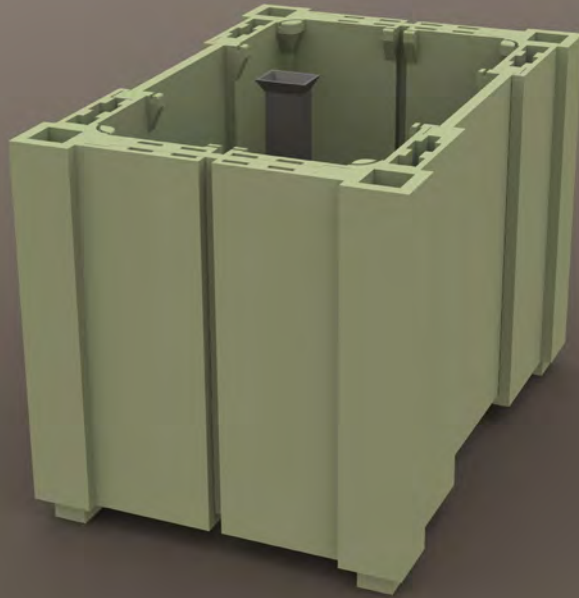
ORLA CARBERY

## CathiCare

[orlacarbery@icloud.com](mailto:orlacarbery@icloud.com)

CathiCare offers a comprehensive solution for new intermittent catheter users by providing an easy-to-use starter kit that includes catheters, disposable bags, hand sanitizers, a practice model, and a travel bag. This kit is designed to go hand-in-hand with an educational app. CathiCare addresses the lack of physical and emotional support for beginners in catheterisation, aiming to enhance their learning experience and overall quality of life. The app educates users on

proper practice and technique, reducing the risk of infection and alleviate strain on healthcare services. Stakeholders include urology clinics, healthcare providers, urology patients, and their caregivers. By providing practical tools, educational resources, and a supportive community, CathiCare empowers users to navigate the challenges of intermittent catheterisation with confidence and ease.



COLM CAREY

COLM CAREY

## Aztek

[colmcarey2@gmail.com](mailto:colmcarey2@gmail.com)

Aztek is a modular plant box for people in urban areas who want to make the most of the little space they have. Being in proximity to plants has been proven to improve overall wellbeing and reduce symptoms of anxiety and depression, which has become a serious epidemic in the young people of today. Home-

grown food also has more nutrients and antioxidants than their store-bought counterparts, improving your bodies health, alongside your mind and soul. With Aztek I want to bring a fraction of that natural feeling to people in urban areas.





ROBERT CASEY

ROBERT CASEY



## Droplet

robertcasey21@gmail.com

People with dysphagia (trouble swallowing), often find it hard to swallow liquids safely and feel embarrassed using specialised cups because of their medical or childish design. Droplet is a discreet, versatile cup suitable for all, including those with dysphagia. It dispenses a consistent 10ml of liquid and interchangeable parts tailored to

personal needs while looking like a regular travel cup. This thoughtful design helps people with swallowing difficulties drink confidently and comfortably. The familiar appearance reduces unwanted attention, helping users stay relaxed, hydrated, and able to enjoy social activities without discomfort.



KEELAN CHRISTIE

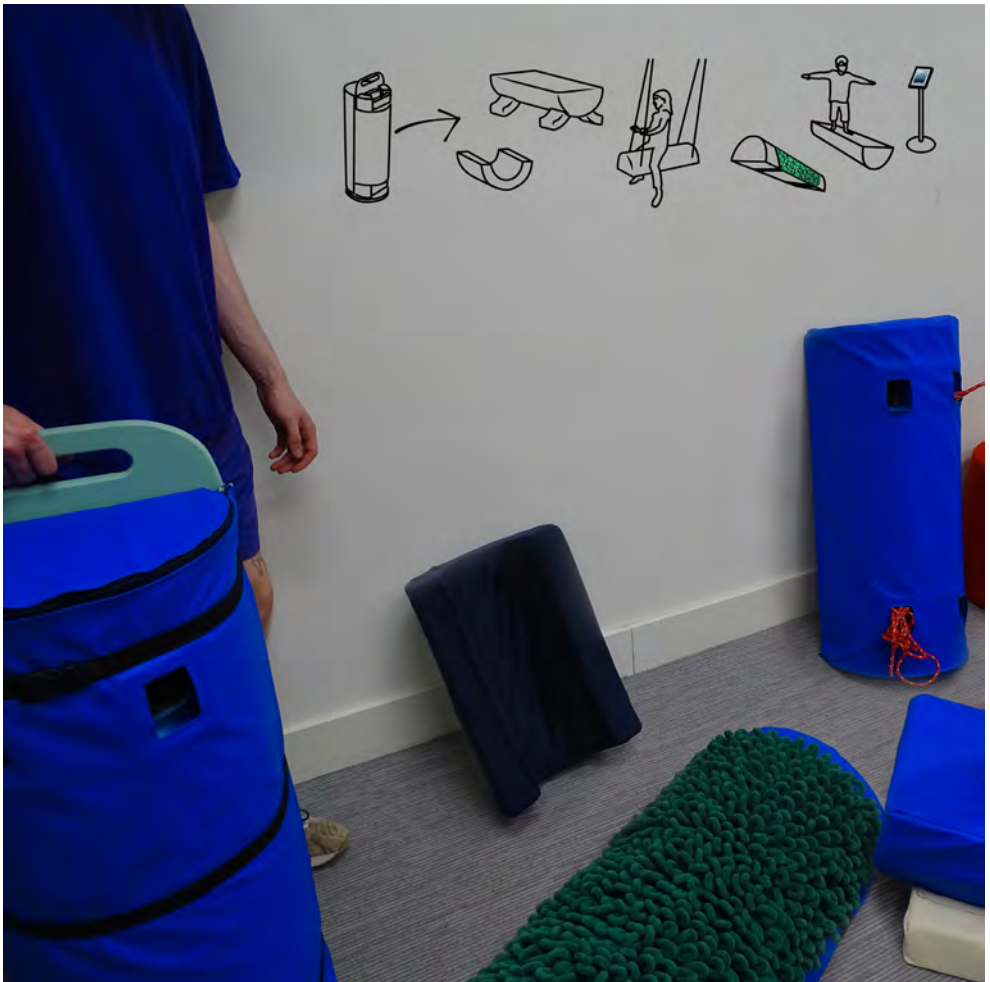
KEELAN CHRISTIE

## Zephyr

Keelanchristie01@gmail.com

Zephyr is a portable dust containment unit designed for modelmakers aimed at removing dangerous dust particles from their modelmaking environment. It helps keep the workspace clean and reduces airborne particles. The device is placed on the modelmakers lap during sanding, where the built-in vacuum and bowl

shape help collect dust particles. The dust is directed to the bottom of the bowl where the vacuum then sucks the dust into the containment chamber where it is safely stored. To empty the dust, the user twists off the chamber and disposes of the dust safely.



MATTHEW CODY

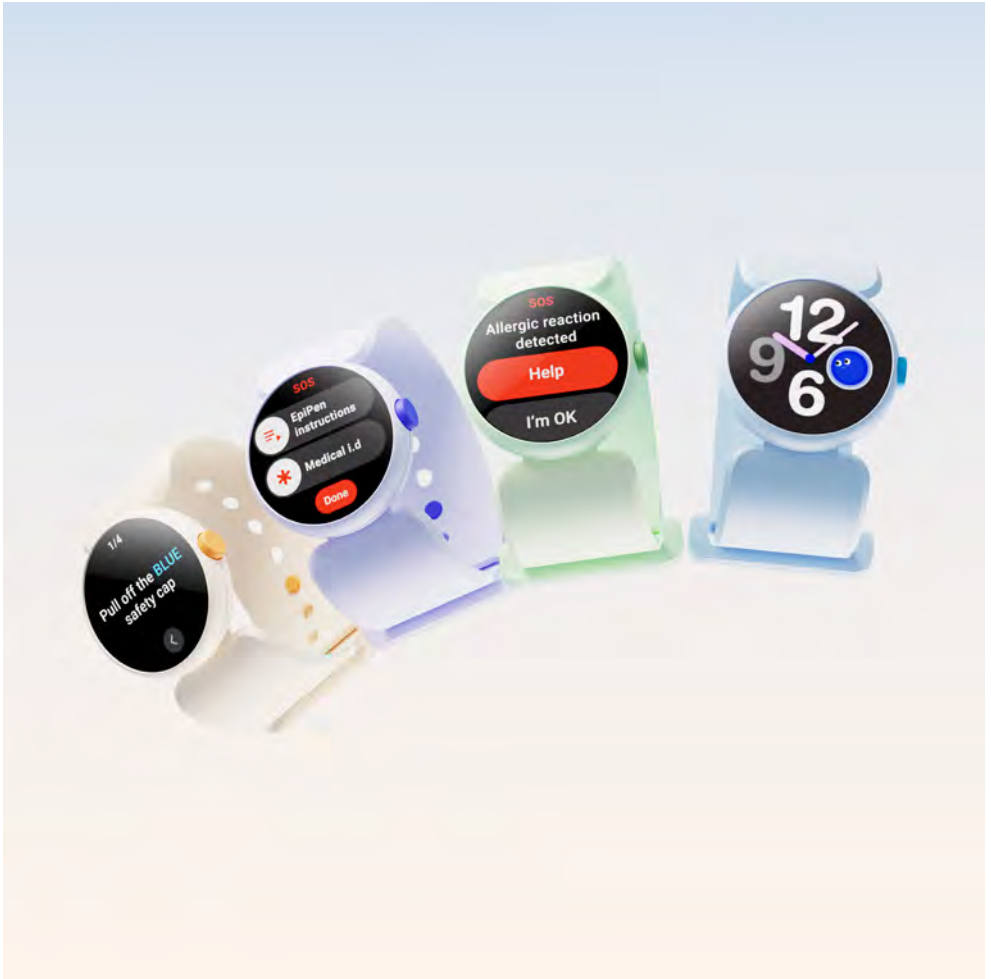
MATTHEW CODY

## Balance

[garryvoerunner@gmail.com](mailto:garryvoerunner@gmail.com)

Balance is a soft-play solution centred around the focus on the vestibular system. Often children with Autism Spectrum Disorder (ASD) are faced with balance and motor control difficulties which can affect children's interactions with peers. This product aims to subvert

this by providing multiple options for vestibular exercises, sensory feelings, weightlessness, parent interactions, and games. Balance is designed to be used in schools, at home or even at play therapy.



ASHLEY CORCORAN

ASHLEY CORCORAN

## Curo

ashleycorcoran01@gmail.com

Ireland faces a pressing issue: one in every 20 children experiences serious food allergic reactions in primary school or preschool. Timely recognition of anaphylaxis and immediate treatment with adrenaline are vital for protecting children. Curo uses advanced sensors and a threshold algorithm to swiftly detect the pre-warning signs of anaphylaxis. Instantly, it delivers an alert

via the smart assistant and offers real-time treatment instructions. It also sends an SMS to parents/guardians, notifying them of the reaction and providing their child's location. Curo mitigates the risk of severe reactions, potentially saving lives. It brings peace of mind to families and promotes safety in schools and childcare settings.



JAMIE CURLEY

JAMIE CURLEY

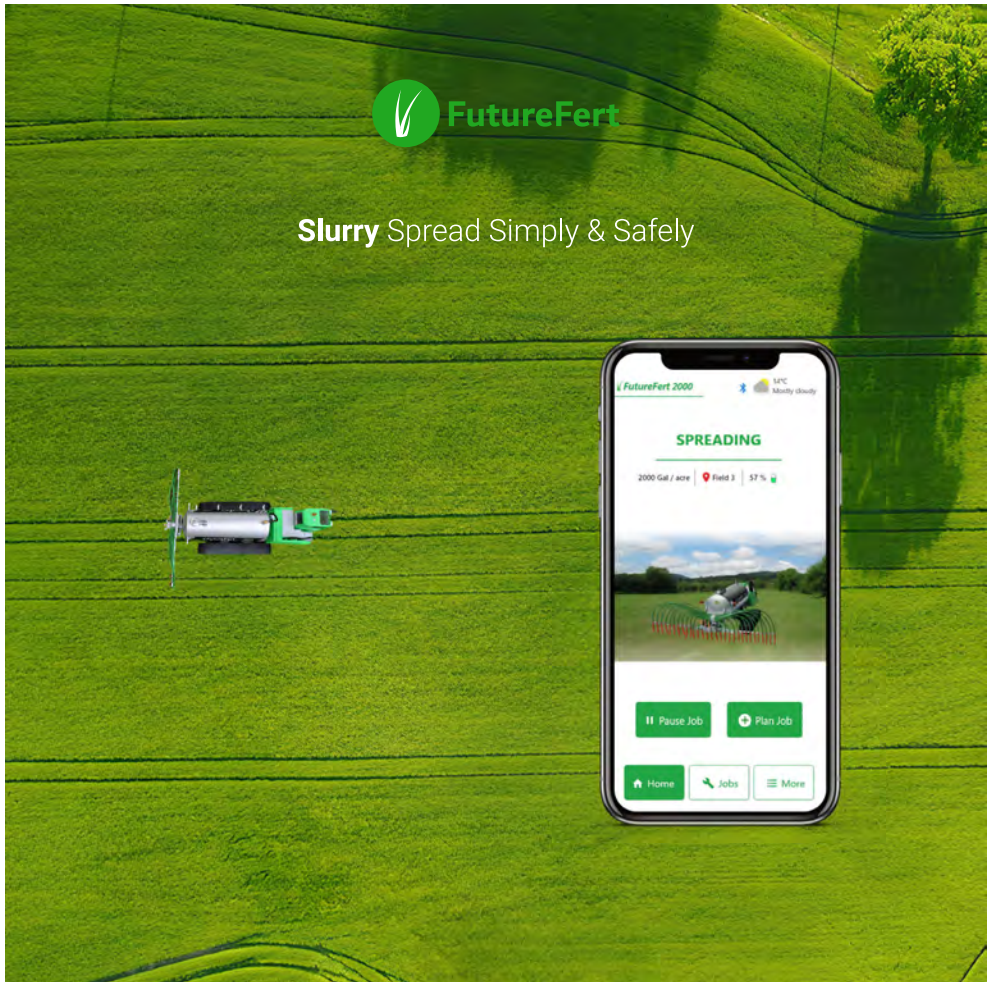
## TAPA Helmet

[curleyjamie3@outlook.ie](mailto:curleyjamie3@outlook.ie)

Having played hurling myself, I've come to regard the helmet as an old-fashioned and uncomfortable necessity that begs for modernisation. Both male and female players often endure the sensation of their heads being tightly compressed within these helmets, extreme sweating, and not to mention the risk of serious injuries due to the outdated design. Introducing the TAPA hurling helmet – a revolutionary new design tailored specifically for the player. The TAPA helmet boasts a suite of advanced

features, including enhanced ear and jaw protection, customisable fit for various head sizes, a ventilated chin guard, and a more breathable shell. But what does TAPA signify? Derived from the Irish word for fast, it hints at the lightening pace of hurling, known as the fastest field game, globally. In essence, the TAPA helmet isn't just about innovation; it's about elevating the game, prioritizing player safety, and enhancing the overall player experience.





## FutureFert

Adamijdeegan@gmail.com

FutureFert is a new innovative system that can be implemented on any size farm, big or small. This automated system allows the user to spread slurry effortlessly; whenever and wherever they please. A purpose-built app gives the user ultimate control over all aspects of the job from start to finish including; job start date and time, field selection, slurry dosage per acre and fill point

selection. Enjoy more free time as the system does the work for you. Slurry can be spread little and often which will reduce environmental pollution through leaching, with the added benefit of increased grass growth. Health and safety will be greatly improved with the reduction of large machinery and human interaction, resulting in a more superior system.





KAYLEIGH FOGARTY

KAYLEIGH FOGARTY

## Sensify

[kayleighfogarty@hotmail.com](mailto:kayleighfogarty@hotmail.com)

Sensify revolutionizes digestive health management, catering to individuals seeking precise dietary insights. With rising awareness of food intolerances and sensitivities, consumers face the challenge of identifying problematic foods and uncertainty. The portable two-in-one device surpasses traditional methods as they are often time-consuming.

Sensify offers a solution by utilizing food recognition technology to scan meals and also analysing hydrogen and

methane gases from breath samples, providing real-time feedback on trigger foods. By tracking and monitoring results, Sensify empowers individuals to make informed choices, fostering better digestive health outcomes. Additionally, its food scanner offers convenience to scan on-the-go. By streamlining this process, Sensify enhances the quality of life for those managing poor gut health, providing overall improved health.



SÍOFRA FOLEY

SÍOFRA FOLEY

## Mise

siofrafoley1@gmail.com

Mise is designed to support independent dressing. Mise fasteners aim to grant independence in dressing back to the user by attaching an easy-to-use fastener to the clothes you already own. The closures are unnoticeable when worn, allowing focus to remain on your

clothing rather than ability. For ease, Mise fasteners can be transferred from garment to garment or alternatively left on the clothing, even when washing. Mise allows you to wear the clothing you want without difficulty or pain, giving independence back to you.



SEÁN-JAMESON GALVIN

SEÁN-JAMESON GALVIN

## Swoop

Seangalvin801@gmail.com

Learning something new isn't always easy, but learning music should be, especially for those with visual learning difficulties like Dyslexia, Dysmusia, and Dysgraphia. My product aims to address this with three key focuses: sight, sound, and sensation. A projector displays a note spectrum in front of the user, providing a visual reference. Hand movements alter amplitude, pitch and

volume along the XYZ axis, aiding note discrimination. Haptic sensors in the glove provide feedback based on note frequency and volume, enhancing the user's connection to the music. Gesture recognition adds depth by allowing users to mute one hand for complexity and raise a note a step with a finger point gesture, expanding musical possibilities.



CONOR GOLDEN

CONOR GOLDEN

## Aqua Titan

conorjg3012@gmail.com

Just like riding a bike or driving a car, swimming sparks the same level of enjoyment. However, many people avoid learning this skill due to an underlying apprehensiveness. It is important that people feel comfortable and confident in the water. At the moment, the solutions that are currently on the market are not

that discrete and more often than not cause more embarrassment for those trying to learn how to swim comfortably. AQUA TITAN aims to diminish this feeling and allow these people to enjoy this activity as much as I do, allowing them to take up swimming at any stage in life.



REGINA GRANAHAN

REGINA GRANAHAN

## Bloom

Reginag12381@gmail.com

In East Asia, the word for menopause translates to regeneration or renewal. Bloom strives to help people see menopause as a new natural part of life rather than seeing it as a loss, stop or end of something. One of the most common symptoms of menopause people suffer with is vaginal dryness and its effects

around 50% of people post-menopause. From my research I found that the treatment for vaginal dryness provides a dissatisfactory experience for people. Bloom provides a comfortable and easy-to-use applicator that was designed with the user's experience in mind.



MEGAN GRANT

MEGAN GRANT

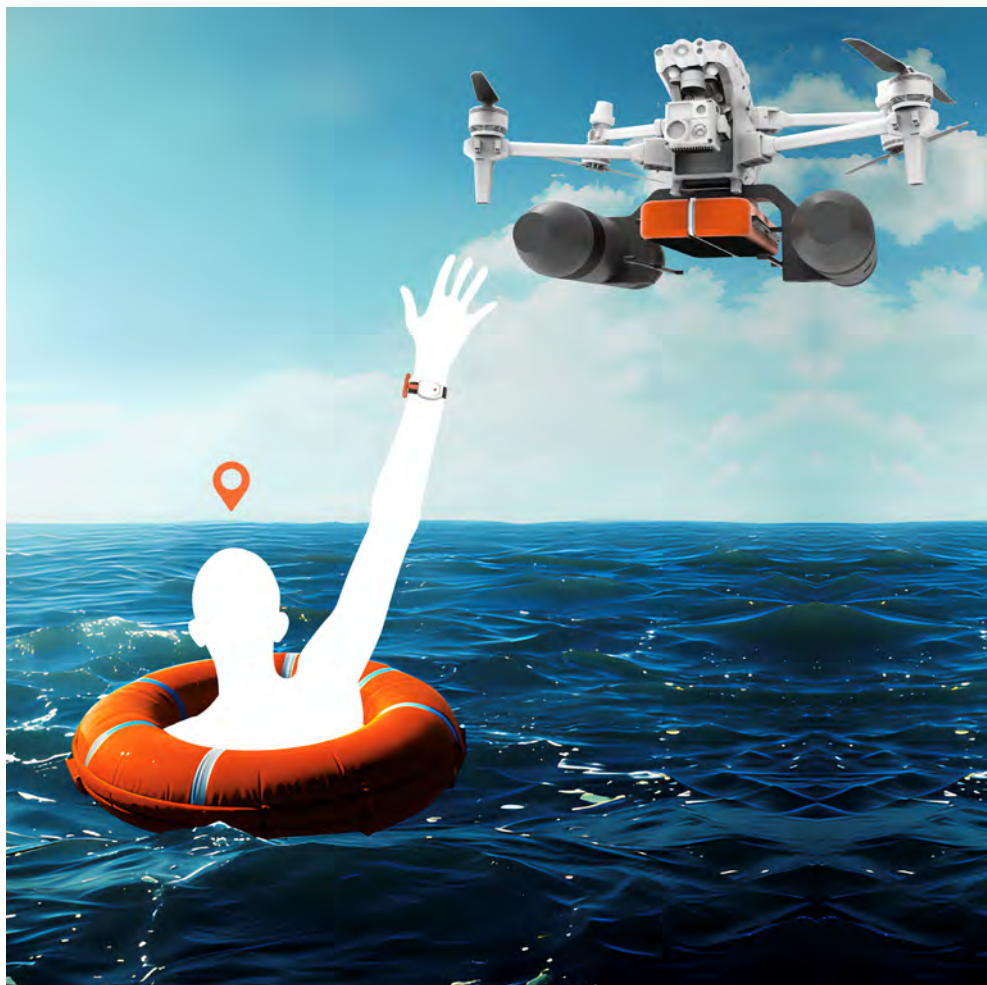
## Buí

megan.grant1202@gmail.com

Outdoor play is essential for children's development, fostering imagination, physical activity, and social bonds. Playgrounds are a hub for children to play, interact and are a place of excitement and inclusivity. However, not all playgrounds are designed to accommodate everyone. Buí, a redesigned slide, aims to change that. Integrated into the playground landscape, Buí is fully accessible,

eliminating the need for wheelchair transfers, offering safe seating for those who need it and railings for those wanting to take a risk. Whether children prefer solo adventures or sharing the slide with friends or carers, Buí ensures everyone's needs are met in a secure environment, promoting inclusivity and fun for all.





CÉADAN HOGAN

CÉADAN HOGAN

## SwimSafe

ceadanhogan@gmail.com

Many beaches in Ireland are unsupervised by lifeguards which leaves beachgoers vulnerable to dangers while swimming in the sea. SwimSafe is a high-speed rescue system for un-supervised beaches that solves this problem. The system utilises a combination of wristband and drone technology to rapidly assist swimmers in distress in the critical first few minutes. A wristband worn by the swimmer can be activated to transmit a geo-location emergency

distress signal. An operator in a control centre can then pilot a drone from the docking station directly to the location of the incident. The drone delivers an inflatable ring buoy to the person in difficulty helping them stay afloat until the emergency services arrive. A single drone operator could protect a large number of beaches simultaneously. SwimSafe significantly enhances the potential to save lives in areas where beach lifeguards are unavailable.



## Athena

[Oliviahumphreyso@gmail.com](mailto:Oliviahumphreyso@gmail.com)

Chemotherapy-induced alopecia is a distressing side effect common to specific treatments in oncology. Alopecia can significantly reduce quality of life and negatively affect body image for patients with cancer. As such, there has been growing pressure on oncology wards to support patients experiencing hair loss and offer supporting treatments to minimise this. Scalp Cooling treatment aims to mitigate this side effect. However, its integration into the Irish

healthcare system faces obstacles such as insufficient cap fitting, limitations in nurse capacity, prolonged hospital stays, and a scarcity of treatment slots. Athena is a scalp-cooling device consisting of a carry case and a wearable headpiece. Athena aims to provide patients with a more accessible and effective option for scalp cooling treatment, giving patients control over their care in a time of little control.



ANNA HURLEY

ANNA HURLEY

## Wave Handwashing

[hurleyanna4@gmail.com](mailto:hurleyanna4@gmail.com)

Approximately 70% of a cotton T-shirt's carbon emissions stem from machine washing and drying, surpassing those from its production. In our fast-paced world, machine convenience leads to excessive washing that causes wear, energy and water usage and a detachment from our clothing. Wave's handwashing suite offers an eco-friendly alternative, caring for your clothes and the environment. Ideal for small, everyday loads like gym gear or delicates, the Wave Washbag features

a silicone washboard texture for gentle yet effective cleaning, while the Wave Spinner eliminates manual wringing. With textiles contributing to 35% of ocean microplastic pollution, the Wave Washbag includes a micro drainage filter, preventing synthetic microfibers from entering waterways. Crafted from recycled ocean plastics, the suite promotes environmentally conscious design, encouraging responsible clothing care, one wave at a time.



ORLA JOYCE

ORLA JOYCE

## Younity

[orla.joyce@outlook.com](mailto:orla.joyce@outlook.com)

Many people who menstruate don't use sustainable period products due to fear of leaks, not feeling fresh and lack of knowledge on how to clean them. Younity is your essential duo of period underwear and cleaner, designed with you in mind. The period underwear

holds your flow while the changeable rip off pad keeps you feeling fresh all day. It also includes a front and back pouch designed to hold a heat pad for cramp relief on the go. The cleaner is designed to clean any of your reusable period products wherever is convenient for you.



THEO JOYCE

THEO JOYCE

## Eyerise

[theopjoyce15@gmail.com](mailto:theopjoyce15@gmail.com)

Eyerise is a dynamic lighting system that provides correct intensity and quality of light at the critical periods of the day to improve sleep quality. This is done by means of a wearable for morning use and portable component for evening use. Sleep is primarily controlled by light as it directly affects hormone secretion. As technology advances screen time increases, and this is proving detrimental

to young people as they spend time on their devices rather than getting well needed sleep. This product helps keep track of the users sleep routine by producing appropriate light given the time of day. 'The source' creates an ambient light in the evening and 'the wearable' provides high lux levels in the morning.





KO KALLEWAARD

KO KALLEWAARD

## SUAS

[Ko\\_Kallewaard@Hotmail.com](mailto:Ko_Kallewaard@Hotmail.com)

SUAS is an innovative design solution for wheelchair users facing the struggles of air travel. Current air travel for wheelchair users involves separation from your own custom wheelchair, the use of unsuited and unfamiliar equipment and reliance on poorly trained staff. SUAS offers a different approach. Before boarding,

your wheelchair is equipped with a small locking system that allows you to board and fly in your own wheelchair on any plane fitted with the new SUAS system. No more worrying about damage to your custom equipment or discomfort from mishandling –just the freedom to travel independently. Take off with SUAS.





OISÍN KELLY

OISÍN KELLY

## Solus

[oisinmkelly@gmail.com](mailto:oisinmkelly@gmail.com)

Solitary bees are our underappreciated champions of pollination, and they're dying. This is because of limited awareness of their presence in the ecosystem which has led to lacklustre conservation efforts being put in place for them. SOLUS is the educational kit designed to tackle this problem. Aimed at the primary school education system, it provides a practical and traditional

education to children whilst also providing the means to incorporate solitary bees domestically, through a self-assembled bee hotel and specifically tailored flora for solitary bees. The kit also doubles as a science hub, that encourages children to engage with nature and solitary bees in a fun and meaningful way while contributing to real Citizen Science and data collection projects.



TOMÁS KELLY

TOMÁS KELLY

## FreeTrack

Kellytomas79@gmail.com

For my final design project, I am designing an assistive device for manual wheelchair users. This design will allow manual wheelchair users to travel across uneven terrain such as mud, grass, sand, gravel, and snow. The

device is lightweight, portable, and quick to attach and detach from almost all types of manual wheelchair. The device allows wheelchair users the freedom to travel across multiple terrains with independence and confidence.



DANIEL KENNELLY

DANIEL KENNELLY

## Leatherback

Danielkennelly5@gmail.com

Leatherback is a personal flotation device for anglers that addresses the need for safer, more sustainable fishing practices. Anglers face challenges in capturing moments without harming fish and navigating regulations. The design integrates 50N buoyancy, a quick-capture waterproof phone mount, and a dehooking tool slot, ensuring efficient angling while prioritising fish health. Modular chest pieces cater to diverse tackle needs, while recycled

fishing net nylon construction combats ocean plastic, benefiting both anglers and the environment. Reflective elements enhance visibility for safety, and the accompanying Leatherback app provides real-time updates on regulations, hotspots, and community engagement, fostering responsible angling and camaraderie. With a live location feature, it brings peace of mind to friends and family.



AMY LAHERTY

AMY LAHERTY

## Aim

[amylaherty@gmail.com](mailto:amylaherty@gmail.com)

AIM addresses the pressing need for accessible and user-friendly autoimmune disease testing, overcoming the complexities and discomfort of traditional methods. My innovative design transforms this process, making blood sampling effortless with an advanced lancet design. Users experience minimal discomfort, making blood sampling more manageable and less intimidating. The accompanying app allows symptom input and offers tailored

testing recommendations by condition, enhancing user engagement. This empowers individuals to take charge of their health by self-testing for initial indications of autoimmune diseases through self-testing, which are often challenging to diagnose. AIM provides healthcare professionals with reliable data for timely interventions. AIM bridges the gap between convenience and precision, ensuring a smoother journey towards wellness for all stakeholders.



ABIGAIL MCARDLE

ABIGAIL MCARDLE

## Relevé

abbruth@gmail.com

Pointe is a ballet technique that allows dancers to perform choreography on the very tips of their toes. Traditional pointe shoes are expensive, uncomfortable and have very short lifespans. Their inability to be disassembled for recycling means that when one small part wears down the whole shoe ends up in landfill. Relevé's innovative design incorporates a durable carbon fibre toe box with customisable inserts to increase comfort and longevity.

The insole (shank) and ribbons are easily replaceable allowing for quick fixes and avoiding the need for an entirely new shoe. These redesigned components are contained within a satin 'sock' that helps the Relevé pointe shoe to maintain the traditional aesthetic while evolving to meet the dancer's needs.





ALAN MCCABE

ALAN MCCABE

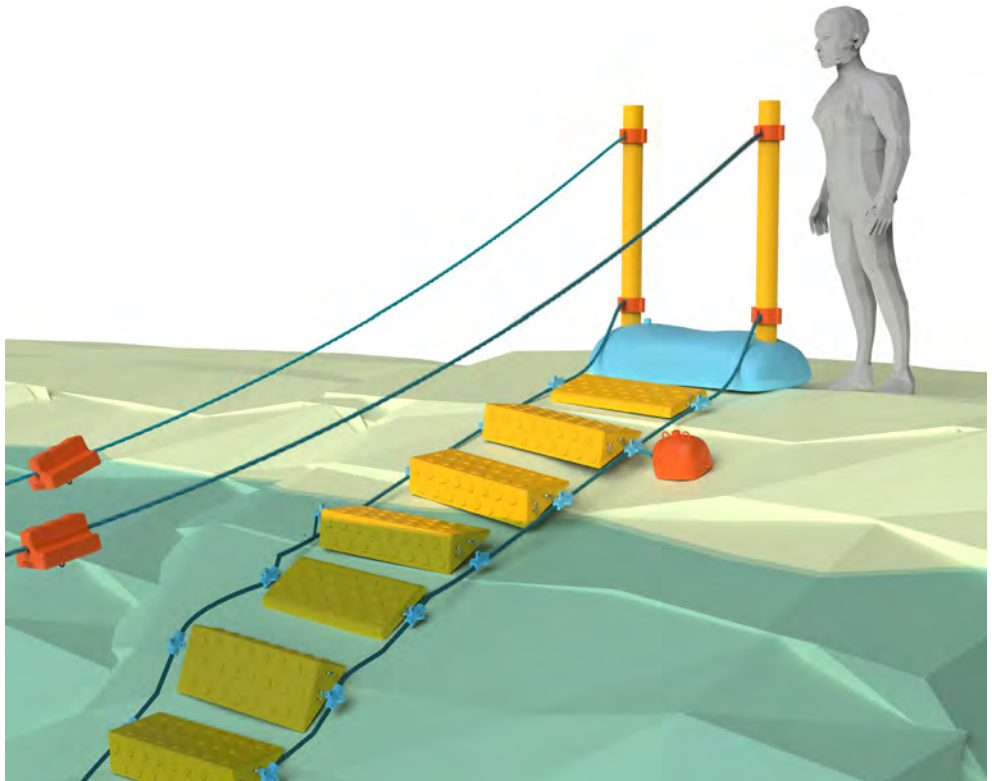
## TALON Visibility Strip

14amccabe@gmail.com

Ireland's mountain rescue service has been ensuring hiker safety for nearly 60 years, with each team comprising of dedicated volunteers who generously contribute their time to assist others. During my preliminary research, visibility emerged as a significant challenge from both ground and aerial perspectives. In low-light search operations, it's crucial for volunteers to be easily identifiable, not just for casualties but also for incident

command, other teams, and helicopter operators. The Talon Visibility Strip is a simple yet effective solution designed to attach to various hiking helmets, enhancing operator visibility over long distances. It includes a powerful 200lm LED array, a removable rechargeable battery, and a detachable headlamp accessory. Carefully iterated and thoroughly tested, Talon is ready to meet any challenge the mountains present.





EMMA MCNULTY

EMMA MCNULTY

## ShoreStep

Emmamcnulty12@gmail.com

ShoreStep is a waterway entry system. Designed to overcome hazardous conditions such as uneven terrain and painful underfoot conditions, this product provides comfortable and safe entry points for all users. The walkway moulds to the natural topography of the waterway ensuring users have hassle free entry into the water for activities such as swimming, water sports and fishing. The ShoreStep enhances accessibility without affecting the natural environment its used in. This

product is designed to be implemented at inland waterway shores. Its modular and removable construction have minimal environmental impact, while also allowing for easy maintenance and removal by active community groups. This involvement from community groups fosters a sense of ownership and pride along with a renewed connection to their waterway. ShoreStep - transforming waterway entry.



MIGLE MECIONYTE

MIGLE MECIONYTE

## Diminauto

migle1105@gmail.com

Current transport systems fail to meet the accessibility needs of individuals with dwarfism, limiting their comfort, mobility & independence. The Diminauto redefines the automotive landscape, featuring front-opening doors that enhance ease of entry and exit. Beyond the doors, every aspect of the vehicle is crafted with smaller stature in mind, from the adjustable seating configurations to the optimised control placement.

Diminauto is purpose-built to address challenges and to provide an ergonomic design for comfort and safety. The car's electric powertrain sets a precedent for sustainability, resulting in a cleaner and greener driving experience. Overall, Diminauto transcends the ordinary, embodying inclusivity, innovation, and environmental consciousness on the road.



AOIFE MURPHY

AOIFE MURPHY

## Glan Wool Scouring Suite

aoifemurphy144@gmail.com

Irish sheep wool, renowned for its remarkable properties, often falls short of its potential due to outdated processing methods. This innovative design revolutionizes the traditional scouring process, addressing critical industry needs. By streamlining wool washing with a user-friendly basket and basin setup, it minimizes laborious tasks like heavy lifting, making the process accessible to all. The sloped walls ensure gentle treatment of the wool,

preserving its quality while the valve and drain system simplifies waste disposal, promoting cleanliness and efficiency. Incorporating a spinning mechanism expedites drying, reducing processing time and energy consumption. Beyond enhancing productivity, this solution elevates the industry by encouraging engagement and fostering sustainability, unlocking the full value of Irish sheep wool while meeting modern demands.



KYLE MURPHY

KYLE MURPHY

## Vindex

kylem3401@gmail.com

With the alarming rates of accidents plaguing small and large construction sites and the inherent risks faced by workers daily, there's a pressing need for proactive safety measures. Vindex revolutionises safety by integrating advanced technology into a sleek and adjustable vest, catering to the diverse needs of both male and female workers. Equipped with fall-detection, a panic button, hands-free communication,

air-quality monitors, GPS location, an emergency services call button, and a paired mobile application, Vindex ensures rapid response in critical situations. By seamlessly blending protection with communication and adaptability, Vindex not only safeguards workers' lives but also enhances productivity and peace of mind for workers, project managers, safety officers, and the construction industry as a whole.





JACK NAGLE

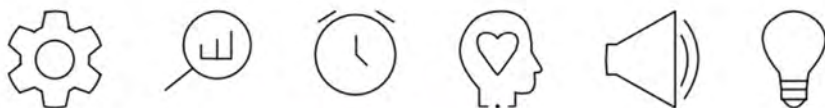
JACK NAGLE

## Secure Strap Solutions

Jacknagle7810@gmail.com

Transportation of substantial and oblique loads is a strenuous and risky operation to carry out on Irish roads. There is a great risk of this freight breaking away from a trailer during transportation. There is a need for a safe solution to prevent these accidents from occurring. Safe Strap Solutions it is a game changing solution to prevent this issue from

occurring. The device can be attached to any strap in the matter of seconds. Solar powered charging of the device allows for easy use and prevents forgetting to charge it at night. A Bluetooth signal from the sensor will notify the operator to alert them to safely pull over to readjust the load before continuing their journey.



MICAH NEILSON

MICAH NEILSON

## SenseScape

Micah.neilson01@gmail.com

SenseScape is a versatile sensory monitoring device designed for autistic adults, offering control over daily sensory challenges and demands related to ASD. Worn or displayed in various ways, it monitors sound, light intensity, and temperature to empower users against triggers. A check-in system tracks emotional, sensory, and physical well-being, aligning with metrics gathered. This fusion of data and interaction

grants autonomy, aiding in tackling sensory overwhelm directly and at the source. SenseScape provides ambient or on-demand monitoring, gathering environmental insights throughout the day or upon user prompt, effectively targeting discomfort at its root. Measurements are stored and mapped, creating a personal sensory experience and profile each day.





## TAAP

[ciara.novakovic@gmail.com](mailto:ciara.novakovic@gmail.com)

TAAP integrates tactile and audio cues to empower independent travel for the visually impaired. With a tactile map and haptic feedback, users feel the route while audio prompts provide real time information. TAAP aims to seamlessly combine independent navigation with an accessible public transport experience. My research focused on exploring the overall accessible journey. This led me to create a solution tailored to visual impairment due to the challenges faced

when accessing public transport and navigating routes. The TAAP wearable uses electromagnetic technology to form a tactile map, while haptics guide the user through their journey with precision. Its modular design offers seamless transitions between wearable and handheld use. TAAP's audio companion allows users to navigate urban environments and public transit networks successfully.



ADAM O'BRIEN

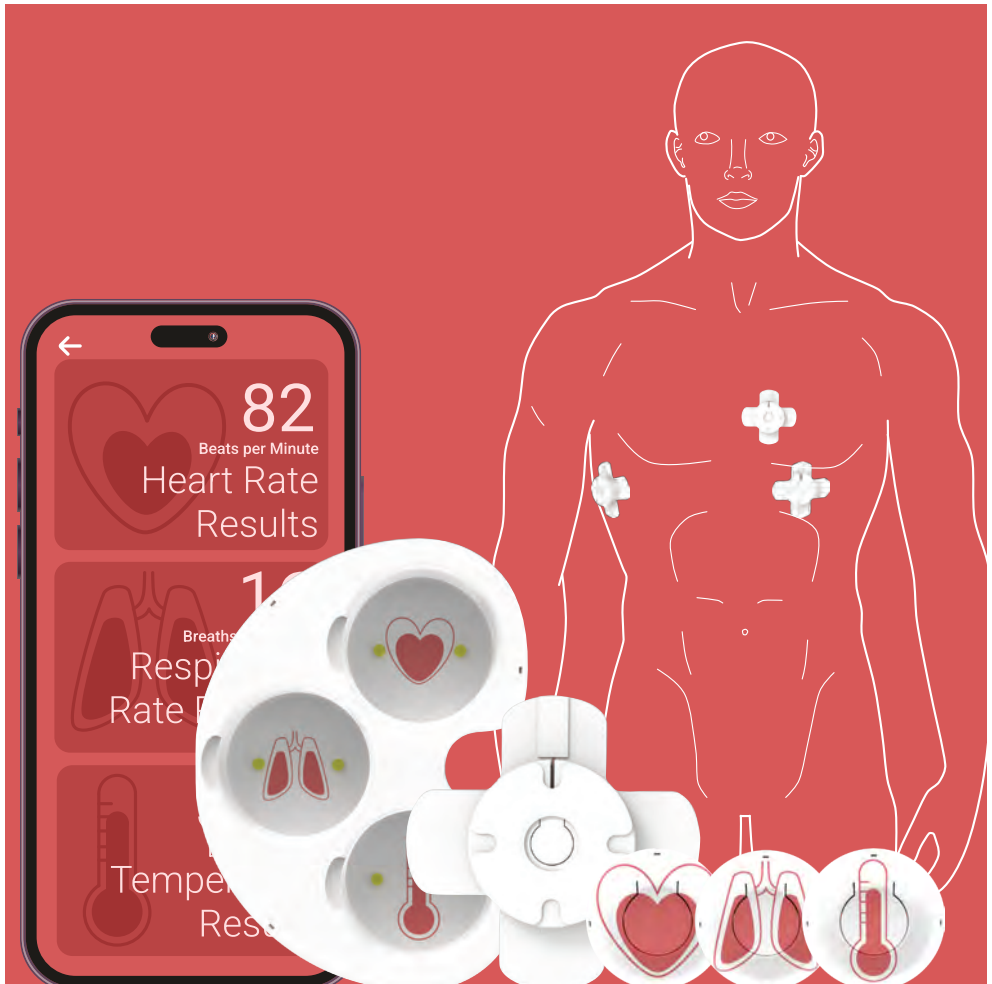
ADAM O'BRIEN

## ECO-VOLT

Adamobrien212@gmail.com

The EV wall charging unit addresses the growing need for convenient and efficient charging solutions for electric vehicle owners. Designed with both residential and commercial users in mind, the unit offers a sleek and user-friendly interface that simplifies the charging process. By integrating smart features such as remote monitoring and scheduling capabilities, the design enhances user convenience and flexibility. EV owners

can easily monitor and control charging sessions from their smartphones, optimizing energy usage and reducing wait times. This innovative solution not only alleviates the pain points of traditional charging methods, such as limited accessibility and lack of visibility, but also promotes the widespread adoption of electric vehicles by making charging more accessible and intuitive for stakeholders.



LEAH O'DONNELL

LEAH O'DONNELL

## Vitalia

Leahodonnell28@gmail.com

The Vitalia wearable devices and app tackle the challenges of assessing symptoms and seeking timely and appropriate medical assistance. Primary stakeholders, individuals in medical distress and bystanders, often face uncertainty in these scenarios, resulting in delays in treatment and emotional strain. Vitalia's three chest-worn wearables monitor the wearer's temperature, heart rate and respiration, facilitating easier assessments and alerting the user

of abnormal readings, and notifying the emergency services if necessary. This proactive system ensures prompt interventions, alleviating pressure on the secondary stakeholders, the emergency services. Medical professionals benefit from the comprehensive data collected, leading to more informed decision-making, faster diagnosis, and improved patient outcomes. Vitalia empowers users, enhances healthcare efficiency, and ultimately saves lives.

# stryker Vision Blade

Providing a 2-in-1 solution for electrocautery and surgical smoke management.



CIANÁN Ó HANLUAIN

CIANÁN Ó HANLUAIN

## VisionBlade

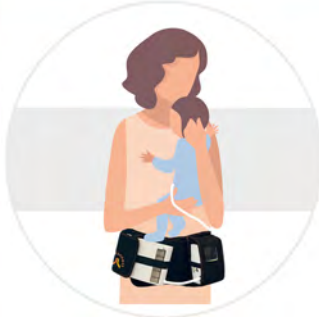
[cianan.ohanluain@gmail.com](mailto:cianan.ohanluain@gmail.com)

The presence of surgical smoke in operating rooms poses significant health risks to healthcare workers and patients. Surgical smoke is created by the use of energy-based tooling on patient tissue during surgery. Exposure to surgical smoke can lead to various health problems, including chronic bronchitis, leukaemia, cardiovascular dysfunction, and more. The VisionBlade provides a 2-in-1 solution for electrosurgery and

smoke management, eliminating staff and patient exposure to harmful surgical smoke contaminants. The Vision Blade allows for increased surgeon visibility with its cutting edge technology and its LED assist light. The Vision Blade also features improved user experience for surgeons through its comfort groove and reduced drag that was previously associated with smoke evacuation tubing.



LELIA RIORDAN



LELIA RIORDAN

## NutriConnect

[riordanlelia16@gmail.com](mailto:riordanlelia16@gmail.com)

NutriConnect is a wearable storage and feeding solution designed to improve the lives of tube fed individuals. When individuals are unable to consume food orally, tube feeding is used to deliver nutrients directly to the stomach. Current tube feeding systems restrict users' mobility, quality of life and independence. NutriConnect consists of a wearable band that fastens securely at the waist,

providing easy access to the tube feed and pump. It empowers individuals to have increased mobility, giving them added comfort and control while they are feeding. This feeding system can be used by multiple user groups, from a mother feeding their baby to older age adults, and those with reduced mobility, ensuring safe and accurate feeding while preserving independence.



CAITLIN RYAN DESMOND



CAITLIN RYAN DESMOND

## CURA

[caitylou01@gmail.com](mailto:caitylou01@gmail.com)

The CURA suite offers two products for supporting postpartum recovery. The compression garment was created to provide gentle support and alignment to the stomach muscles. During pregnancy and post-delivery, the abdomen undergoes significant changes, and this garment aims to help realign the muscles, aiding in the restoration of the body's natural form. By wearing this garment, mothers can experience comfort and

confidence as they progress through their recovery journey. The peripads are specifically designed to address the unique needs of mothers post-delivery. Infused with healing agents, these pads offer soothing relief to tired and inflamed vaginas. The gentle formulation of these peripads helps rejuvenate sensitive areas, promoting comfort and aiding in the healing process after childbirth.





SEAN OG SHEEDY

SEAN OG SHEEDY

## Krawler

[seanogsheedy@gmail.com](mailto:seanogsheedy@gmail.com)

The opportunity is to design a deck which will provide versatile support and comfort to welders and fabricators operating in off-site situations, particularly when working in awkward and uncomfortable areas such as underneath machinery and equipment and on rougher terrain such as farms and construction sites. Wheel mounted, to enhance mobility,

with adjustable back and head support, along with tool and consumable storage, the Krawler is a unique product which will address these needs. The comfort and improved ergonomics when using Krawler along with its tool transport feature will undoubtedly result in safer conditions for the user and result in higher quality welding.

ANNA WHITE



ANNA WHITE

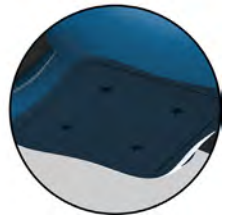
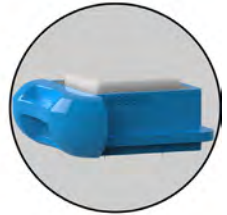
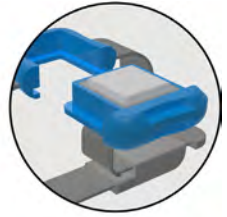
## Roots Rewilding Kit

[annawhite10@hotmail.com](mailto:annawhite10@hotmail.com)

In Ireland, both a national climate and biodiversity emergency have been declared. Biodiversity loss and ecosystem collapse are among the top three economic risks over the next decade—a clear warning that the well-being of future generations rests on how we respond to the biodiversity crisis in the next few years. In today's world, childhood has moved indoors. On average, children spend up to 44 hours

per week in front of a screen, and less than 10 minutes a day playing outdoors. Regular time outdoors helps children thrive and develop important life skills. I have designed a rewilding kit for children which nurtures the curious relationship between kids and nature. It is a fun way for children to improve their environment and add their own splash of green, while learning through doing.

RONAN WHYTE DOOLEY



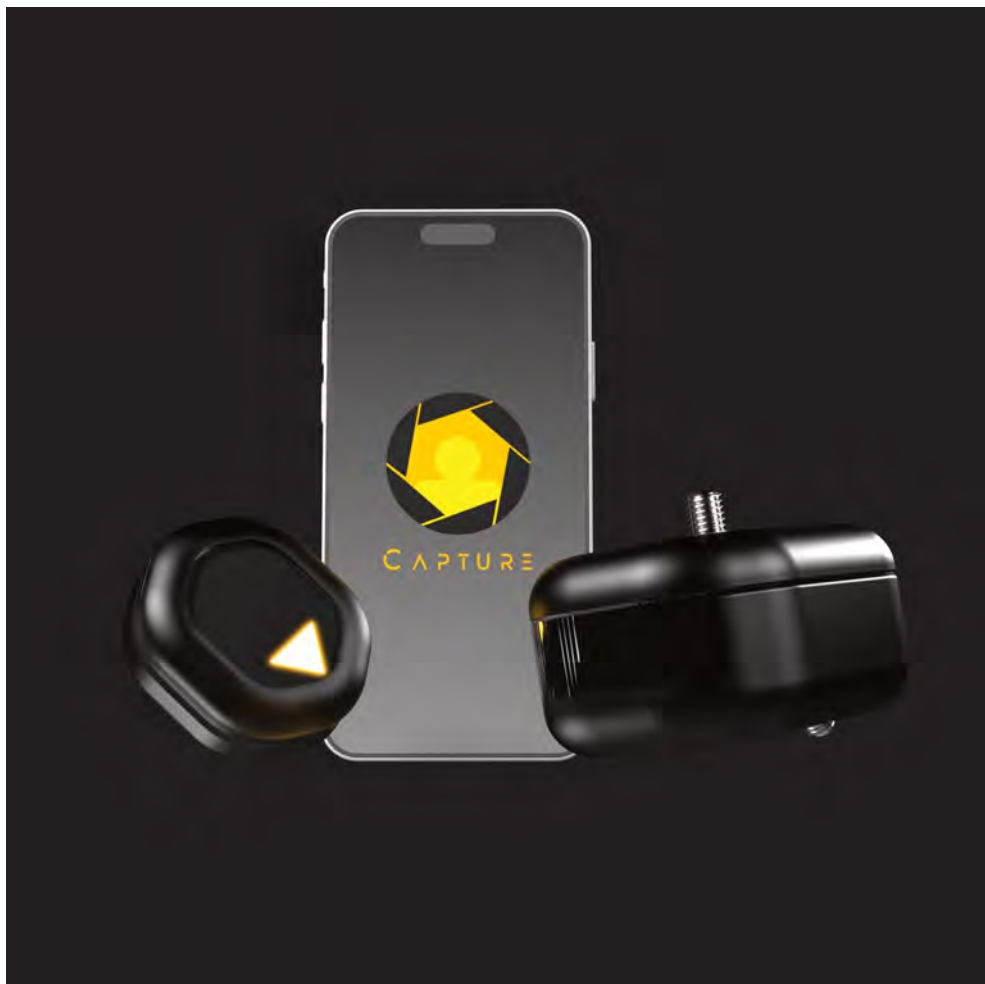
RONAN WHYTE DOOLEY

## MindCheck

[ronanwhyte01@icloud.com](mailto:ronanwhyte01@icloud.com)

Introducing MindCheck: the cutting-edge wearable concussion detection solution for athletes, coaches, and medical professionals. In the fast-paced world of sports, the risk of head injuries is a constant concern, with traditional detection methods often falling short in accuracy and efficiency. MindCheck seamlessly combines a wearable device and app to transform concussion monitoring & detection.

Athletes can now quickly and accurately assess their brain health in real-time, enabling proactive management of head injuries and reducing the risk of long-term complications. Instant access to vital results helps coaches and medical experts make tailored treatment plans and quick interventions for athletes return to play in just 10 minutes. You may have safety and peace of mind at your fingertips with MindCheck.



BEN WILSON

BEN WILSON

## Capture

[ben20t25@gmail.com](mailto:ben20t25@gmail.com)

Having been making social media content for quite some time, I know how frustrating the setup process can be when you are excited to just get the camera rolling and start recording. I wanted to alleviate these frustrations and challenges so that creators don't have to dread setting up and can focus on the excitement of making content. This is where Capture comes in. Capture is an intuitive system designed

to empower creators. By seamlessly integrating cinematic framing techniques and streamlining the setup and re-setup processes, Capture eliminates frustration, enabling creators to dive into making content as quickly as possible while making that content even better. This is all achieved through Capture's interconnected network of tags and companion app.

MSC. DESIGN FOR

HEALTH AND

WELL-BEING



## Hospital Map



Look at Wayfinding Board on wall to see where you are

Find on Room you would like to go to



## Wellness Wayfinder

Eoinkenny84@gmail.com

Welcome to Wellness Wayfinder, your comprehensive solution for seamless navigation within the hospital environment. With our innovative wayfinding system, we aim to transform the hospital navigation experience, making it easier and more intuitive for patients, visitors, and staff to find their way around. With Wellness Wayfinder,

navigating the hospital environment has never been easier. Our comprehensive wayfinding solution empowers users to navigate with confidence, enabling smoother transitions and better overall experiences. Say goodbye to confusion and hello to seamless navigation with Wellness Wayfinder.

EOIN KENNY

EOIN KENNY





PRIYANKA PUTHANVEETIL

PRIYANKA PUTHANVEETIL

## Digital Poster

priyankaravindram175@gmail.com

The digital poster initiative is specifically designed to educate pregnant women on essential health topics. This informative resource covers a wide array of subjects pertinent to pregnancy care, including the management of gestational diabetes, the critical roles of iron and folic acid, and the implications of hypertension during pregnancy, among others. Developed to be digitally accessible, these posters can be conveniently placed in hospital

settings, where they are most visible to the pregnant women. By engaging with the content of these posters, pregnant women are provided with clear, concise, and effective information that enhances their understanding of pregnancy care. Ultimately, this digital poster serves not only as an educational tool but also as a strategic intervention that aims to improve health outcomes for both pregnant women and their babies.

**BREAK THE CHAINS!**



**ARE YOU IN SURVIVAL MODE?**

**ABUSE IS NOT JUST VIOLENCE**

**ANYONE CAN BE ABUSED AND  
ANYONE CAN BE AN ABUSER**



SIOBHAN TOBIN

SIOBHAN TOBIN

## Break the Chains

19193424@studentmail.ul.ie

Introducing the Domestic Abuse Interventions Campaign: The poster campaign is a work in progress that aims to educate people about the different facets of domestic abuse. Domestic abuse is a serious issue that affects individuals of all genders, ages and backgrounds. It does not just occur in

the form of violence, it can be emotional, financial, sexual abuse and neglect. The goals of the campaign are to raise awareness, encourage people to seek help, reduce the stigma and to hopefully reduce the prevalence of domestic abuse by making it common knowledge and unacceptable within society.



AYUKO YOSHIDA

AYUKO YOSHIDA

## Autism Friendly Design in Hospital Waiting Area

[linkedin.com/in/ayuko-yoshidaotr](https://www.linkedin.com/in/ayuko-yoshidaotr)

The hospital environment can be unpleasant for children with Autism Spectrum Disorder (ASD). Although children with ASD attend hospital more often than other groups of children, there is a notable lack of spaces designed to meet their needs, particularly in healthcare settings. There is an urgent need to enhance paediatric outpatient waiting areas to create a more supportive and comfortable environment for children with ASD. The potential for design intervention became evident from interviews with families and healthcare stakeholders during the research stage of the project. For example, a parent expressed that the uncertainty of long

waits causes anxiety for her and her son, staff in hospitals have noted that noise and bright lights often trigger distress for these children, and clinicians have reported that measuring height can be frightening. Various concepts have been explored, such as portable sensory bags with items to soothe and occupy children during the wait, screens or partitions to minimize sensory overload, and less intimidating ways to measure weight and height. By addressing these needs, the goal is to create a more inclusive and calming hospital experience for children with ASD and their families, improving their overall healthcare experience.

