

Commuter Students' Guide

Are you a Commuter student? Here are some resources/activities/supports you can access to make the most of your time on campus



Table of Contents

<i>Glucksman Library</i>	1
<i>Exploring the campus</i>	2
• Living Bridge	
• Memorial Garden	
• Trails	
• Irish World Academy	3
• Art Collections	
<i>Supports</i>	4
• First Seven Weeks	
• Commuter Hub	
• Learning Centres	
• Teach Fáilte	5
• Student Engagement and Support Officers	
• PASS	6
• LevUL Up	
<i>Activities</i>	7
• Climbing Wall	
• UL Arena	
• Clubs and Societies	
<i>Other Resources</i>	8
• Lockers	
• Employment	
• Volunteering	
• Showers	9
• Common areas	
<i>Travel and Transport</i>	10

Glucksman Library

Opening Hours:

Mon-Fri 07:00 - midnight during semester (keep an eye on the Library website or Library social media for changes to opening hours out-of-term).

Makerspace:

Offers in-house access to a range of technologies and tools, such as 3D printers, a 3D scanner, Cricut Maker & heat press, and much more. Free workshops are available to all students.

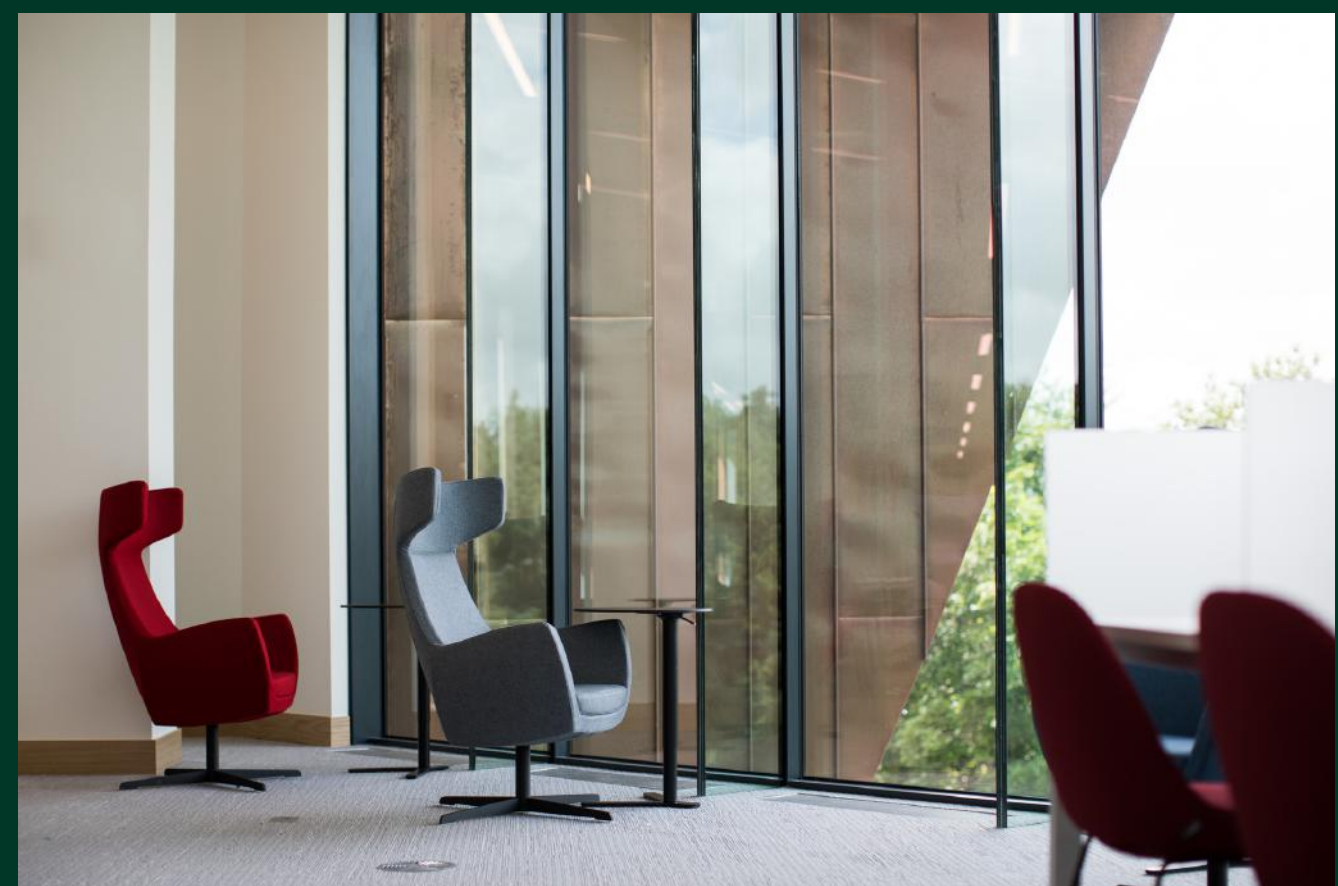
Headspace areas:

On 1st and 2nd floors - Energy pods, Bike Desks, etc. Keep an eye on Library social media for upcoming groups, such as the Craft Circle!

Rent a laptop:

Forgotten your laptop? Don't stress! Laptops are available on loan in the library foyer for periods of 4 hours.

Please note: laptops must be kept within the library.



Explore our beautiful campus

Walk across the Living Bridge:

Looking to grab a coffee in the Pavilion or visit the Irish World Academy? Why not take a scenic walk across the Living Bridge, which boasts a stunning view of the River Shannon.

Memorial Garden:

The Memorial Garden offers a place of peace and rest in which to sit and enjoy our beautiful campus. Created to commemorate past students, staff, and members of the UL community, the Memorial Garden is situated just outside Plassey House.

Walk along the trails:

The University campus spans a stunning 368 acres, so you can be sure there are plenty of walking routes! Walking on the campus offers the opportunity to get some fresh air, meet friends, and get to know the campus better. Why not pop into the UL Visitor Centre and grab a copy of the 'Flora and Fauna Trail Map' and get those steps in on campus, or take a guided tour!

Rooftop Garden:

Situated in the main building on Floor 1, on the D corridor.



Visit the Irish World Academy:

The IWA offers free lunchtime concerts and performances during the semester. Keep an eye out on their website [here](#) for information on upcoming performances.

Visit the University's Art Collections:

Whether you're an art fanatic or looking to visit new places on campus, why not take a trip to one (or all!) of 5 collections held at UL. Click [here](#) for more info

- The National Self-Portrait Collection of Ireland- Plassey House/the Foundation Building and the Main Building
- Watercolour Society of Ireland's Permanent Collection- 1st Floor Foundation Building
- Irish American Cultural Institute's O'Malley Collection- Plassey House
- The Wood Collection of Irish 19th Century Landscape painting- Plassey House
- William and Elizabeth Bourn Vincent Gallery



Supports

First 7 Weeks Hub:

Located in the Student Courtyard, the F7W Hub has free tea and coffee daily, as well as a microwave.

Opening Hours: Mon-Fri 9am-7pm.



Student Life Commuter Hub:

Located in the Student Life Building, the Commuter Hub offers students a place to take shelter and chat. There is also free tea, coffee, and breakfast fuel to enjoy before starting your day.

Opening hours: Mon - Wed from 8am - 9am.



Learning Centres:

UL has 5 learning centres to help students who need extra support with Maths, Science, IT and academic writing. Each centre can provide free one-to-one tuition with a personal tutor. For more information on each centre, click [here](#).



Teach Fáilte:

Need to use a microwave, or feel like a cuppa? (boiling water and milk are provided). Students can avail of this space to chill out, chat and get to know other students. In times of difficulty, students are assured of a listening ear.

Opening hours: Mon-Fri from 11am-3pm.



Student Engagement and Support Officers (SESO):

Experiencing difficulties? There is a SESO aligned with each of the four faculties. The SESOs assist full-time undergraduate students find the answers to questions and identify the appropriate supports to help them excel here at UL. The SESOs are based in the Student Support and Engagement Hub in the Student Courtyard. To book a meeting, click [here](#). Or email SESO@ul.ie



Personal Advisor Support System (PASS):

Your Academic Advisor is an important person to get to know during your time in UL as they can guide and assist you in your academic journey.

You can find out who your Advisor is by:

- **Checking your emails:** your academic advisor's details were shared with you in the email sent confirming your successful enrolment to the University of Limerick.
- **Checking your student portal:** details can be found in the 'Student Adviser Information' section of your Student Portal.
- **Calling into the First Seven Weeks Hub.**

For more information on the PASS, click [here](#).

LevUL Up Hub:

Baffled by Brightspace? Puzzled by PowerPoint? Bewildered by AI? Look no further! The LevUL Up Digital Skills Hub on Brightspace is your one-stop-shop for free live online and in-person workshops, lessons, and resources. Whether you're looking to boost your digital skills and literacies for personal, academic, or professional purposes, the Digital Skills Hub has you covered!

Join the Digital Skills Hub [here](#).



LevUL Digital Skills
Up @UL

Activities

Visit the UL Climbing Wall:

Why not try a new activity while taking a study break? The Climbing Wall offers a unique 360 degrees of walled climbing, taster sessions, and the option to rent any equipment needed. For more information, click [here](#).



Visit UL Sport Arena:

Home to an Olympic-size swimming pool, a gym, sports hall and a wide range of fitness classes, there is something for everyone in UL Sport Arena! For more information, click [here](#).



Clubs and Societies:

Looking to meet new people, take up a new sport or activity, or passionate about a society? Why not visit the UL Wolves Clubs and Societies website [here](#) and join something new.



Other Resources

Lockers:

Did you know that lockers are available for rent on campus? For more information, email info@lockerfix.ie

Employment:

Looking for employment on campus? Keep an eye on your emails for job opportunities as Orientation Guides, First Seven Weeks Guides, and Peer Advisors in the Glucksman Library.

Volunteering:

Looking to give back to the UL community, meet new people and make lifelong connections?

Volunteering is a great way to get further involved in the UL community, and with wider organisations. Not only do you get a great sense of fulfilment, your volunteering hours all count towards the President's Volunteer Award (PVA). The PVA is awarded as a bronze, silver or gold medal and is noted on your transcript. For a list of opportunities, visit the website [here](#).



Showers:

Did you know that there are showers available for students to use on campus? There are showers available in almost every building on campus. Click [here](#) for a map of all shower facilities.

Common areas:

It can be costly to eat lunch on campus everyday. There are many common areas all over campus where you can sit and eat your own food, meet friends for a coffee or just take some time to relax.

- **Red Raisins** (Main Building, Level 1).
- **Kemmy Lounge** (Kemmy Business School, take a left once inside the front door).
- **Foundation Building Foyer** (Foundation Building/Concert Hall, enter via entrance across from Brown Thomas).
- **Pool Tables/Common Room** (Student Life Building; up the stairs and keep walking straight, follow the corridor to the right and through the double doors).



Travel and Transport

Leap Card:

A Leap Card is a prepaid travel card that is the easiest way to pay your fare on public transport around Ireland. It is valid on most Transport for Ireland (TFI) services and commercial bus operators throughout Ireland. It's more convenient because you don't have to carry cash or queue at ticket machines, and it can save you money!



Young Adult and Student Card:

You can get 50% off adult public transport fares with the Young Adult or Student Leap Card.

The **Young Adult Leap Card** is available for all 19 to 25 year olds.

Please note: you must apply for your card online.

To get started with your Leap Card, click [here](#).

For more travel and transport tips and tricks, click [here](#).



**For more resources, scan the QR code to visit the
SESO Linktree**