



Rannóg Ghnóthaí
Mac Léinn
Student Affairs
Division

Mature Student Guide **2025**


Entry & Access Pathways to UL


Mature Student Guide 2025

Entry & Access Pathways to UL

Please direct all questions about undergraduate applications and admissions to:

Academic Registry
University of Limerick
Limerick
Ireland

 +353 61 233 755

 <https://www.ul.ie/academic-registry/about/contact-us>

 <https://www.ul.ie/academic-registry/>

NOTE: The contents of this guide are for information purposes only and should not be viewed as the basis of a contract between a student and the University. No guarantee is given that courses, fees or regulations may not be altered, cancelled, or otherwise amended at any time.



**Rannóg Ghnóthaí
Mac Léinn**
Student Affairs
Division

Table of Contents

1	JOIN AT THE UNIVERSITY OF LIMERICK	5
2	IMPORTANT DATES FOR ENTRY IN 2025	6
3	MATURE STUDENTS IN UL	8
	Mature Student Office	8
	Who is considered a Mature Student?	10
	How many Mature Students are in UL?	10
	What can I apply for?	10
	Where can I get information on courses?	10
	When do courses start?	11
	What level of commitment is required?	11
	Welcome Programme for Mature Students	13
	Information for Mature Student parents	13
4	PREPARATORY PROGRAMMES FOR MATURE STUDENTS	15
	Mature Student Access Certificate	16
	Maths for STEM Certificate	17
	Other Access Courses in Limerick	18
5	MAKING AN APPLICATION	19
	What are the entry requirements?	20
	Initial steps to consider	21
	How to apply	24
	Writing a personal statement	25
	How are applications assessed?	26
	Can I defer my place?	27
6	COSTS AND FINANCIAL SUPPORTS	28
	Programme fees	29
	Cost of living	30
	Financial support	30
7	APPLICATION AND INTERVIEW ASSESSMENT CRITERIA	35
8	LEARNING AND SUPPORT SERVICES IN UL	72
9	MATURE STUDENT PROFILES	75
10	TOP TIPS FROM UL MATURE STUDENTS	80

we extend
a warm
welcome



What is a mature student?

At UL, Mature students in full-time undergraduate programs are usually those who start college for the first time at age 23 or older.

Join at the University of Limerick

As part of our **commitment to improve access to higher education**, we are here to support mature applicants to all undergraduate programmes at the University of Limerick (UL).






Many adults choose third level studies for different reasons. Some want to improve their careers or find new job opportunities, while others want to grow personally or achieve a lifelong dream of studying at a higher level. No matter your reason, background, or experience, mature students are warmly welcomed and valued at UL.

Many of you will be balancing different roles as you take on the role of a mature student. You might have been away from formal education for a long time. This can be challenging, but we are here to help and provide a supportive environment. This guide is a short information booklet for mature students thinking about starting college. It explains the support available at UL and how to apply, helping you make an informed decision about higher education.

We warmly welcome you. We hope that if you choose to come to UL, you will achieve your personal goals and enjoy an exciting and fulfilling learning journey.

SHIRLEY RYAN

Mature Student Officer

-  EM021, Main Building, University of Limerick
-  061-213481
-  Shirley.Ryan@ul.ie
-  www.ul.ie/mso
-  @MSO_UL

Important dates for entry in 2025

IMPORTANT DATES IN BOTH THE CAO APPLICATION
& UL ASSESSMENT PROCESSES:

1

CAO Registration:
**November 5th to
February 1st**

3

Remember
to place your
course choices
in genuine
order of
preference.

5

If you are applying for **Nursing and
Midwifery Programmes LM150,
LM152, LM154 or LM156**, you
will need to register for a written
assessment with the NMBI. You will
need your CAO number to do this.
Test dates and further information
can be found on: [www.nmbi.ie/
Careers-in-Nursing-Midwifery/How-
to-apply/Mature-Applicants](http://www.nmbi.ie/Careers-in-Nursing-Midwifery/How-to-apply/Mature-Applicants)

7

Late Applications are open
until **May** for some courses.
Check *Mature Student
Applications | University of
Limerick (ul.ie)* to ensure
that the course you are
applying for is still open for
mature applicants.

9

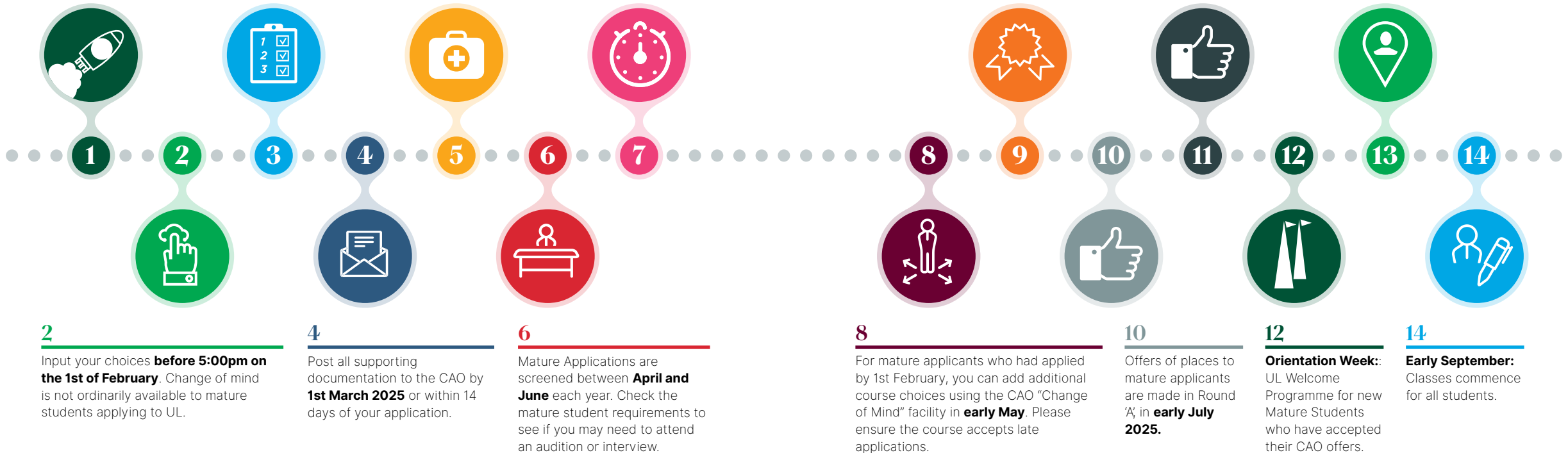
Mature applicants with full Leaving Certificate
or relevant QQI awards, who have already made
a CAO application, may amend their programme
choices up to **1st July 2025**, in order to be
assessed for places based solely on their Leaving
Certificate points or QQI award. Mature applicants
with the MSAC may amend their programme
choices up to 1st July 2025 for direct entry
programmes only.

11

Offers of places to mature
applicants based on full
QQI awards or Leaving
Certificate are made at
the end of July and mid-
August respectively.

13

**End August / early
September:** Orientation
for all first year students.
Students will be notified of
the relevant date for their
programme.



Important: Late applications for courses that are closed may be accepted but not be eligible for consideration by UL.

Information provided is approximate and for reference only.



Mature Students in UL

Mature Student Office

The Mature Student Office (MSO) at the University of Limerick (UL) is part of the student affairs division. It is dedicated to ensuring everyone has fair access to higher education. The MSO helps those who are registered as Mature students succeed in their studies, no matter their background or previous education. The office also guides mature students on how to use the university's services and supports. Our goal is to help mature students transition smoothly into university life and to create an inclusive environment for them at UL.



Shirley Ryan
Mature Student Officer

☎ 061-213481

✉ Shirley.Ryan@ul.ie



Eve Digpal
Office Administrator

☎ 061-202735

✉ Eve.Digpal@ul.ie

Our main areas of work within this transition period include:

- Offering information and advice to prospective mature students who are considering coming to UL through information sessions, outreach visits, open days and personal enquiries
- Co-ordinating and delivering the Mature Student Access Certificate
- Co-delivering the Maths for STEM Certificate with Limerick and Clare Education and Training Board
- Providing an additional Mature Student Welcome programme to new students during their orientation week
- Helping mature students to avail of the wide range of learning and other supports available in the University of Limerick & connecting mature students with each other

The Mature Student Office supports mature students who are registered on full-time undergraduate programmes in UL as well as students on the Mature Student Access Certificate. It is a place where mature students can come to talk and be listened to, in a friendly and empathetic environment. Come to see us for a drop-in meeting in the Student Support and Engagement Hub. You can also email us to organise an online or in person meeting.

Some of the other supports we offer include:

- Hosting Mature Student Gatherings
- Regular emails to all mature students advising of relevant events, deadlines and supports

Who is considered a Mature Student?

A mature student is someone who is 23 years of age or older on 1st of January in the calendar year of entry to a full-time undergraduate programme. For example, if you are applying to study in September 2029, you will need to be 23 before January 1st 2029.

How Many Mature Students are in UL?

As part of providing widening access opportunities to mature students, there are places reserved specifically for mature applicants on all full time undergraduate programmes. On many courses there is a 15% allocation for mature applicants, meaning on a course of 60 students there are a possible 9 places for eligible applicants. Other course directors will accept all mature applicants who are deemed suitable for a place on the programme. Information on reserved places is included in this guide.

What can I apply for?

All undergraduate courses at UL welcome and encourage applicants from mature students. If you are applying as an Irish or EU citizen, you can apply through the CAO. Applicants who are non-EU citizens can contact UL Global by calling **+353 61 234694** or emailing ulglobal@ul.ie. *Please note:* Fees can be affected by if you are applying as an Irish, EU or non-EU applicant.

Where can I get information on courses?

You can course information online, or by getting a physical copy at one of our open days.



When do courses start?

You can find important dates in the academic year by scanning this QR code:



An academic year runs from early September to mid May. There are two semesters (or terms) in each academic year. Each semester lasts fifteen weeks – twelve teaching weeks, followed by one study week and then a period of two weeks when examinations are held.

What level of commitment is required?

Undergraduate programmes require a significant level of commitment from students. Full-time students can expect to have 18 in class hours or more depending on your programme. These hours can be made up of a combination of lectures, tutorials, and laboratory or other practical sessions. Classes are scheduled any time from Monday to Friday, between 9.00am and 6.00pm. TBlended programmes require a high level of participation and self- management from students. Even with some online hours, a student should be available for full time hours Monday to Friday between 9:00am and 6:00pm. Assignments, projects and exams are in addition to your contact hours. Meaning you could need 22 contact (in class) hours plus 14 hours for assignments and study.





Welcome Programme for Mature Students

The Mature Student Office hosts a Welcome Programme for mature students each year at the end of August. This programme offers incoming first year mature students additional tailored information during the week of the first year Orientation programme. You get to learn more about services and supports available to students on campus, meet with other new mature students and with key support personnel, to kick-start your learning journey in UL.

Information for Mature Student Parents

Many of you may already be parents by the time you decide to return to third-level education or you may become a parent during your time in college. One way or the other, it is undoubtedly a significant challenge for anyone to commit to full-time study for a number of years while parenting, but hopefully you will find that it is also a rewarding and positive experience, both for you and for your children, and that you will get to connect with other mature student parents on campus.

There are many supports and services available within UL to student parents e.g. Student Health Centre, Counselling, Chaplaincy, Student Life (who manage the childcare bursary and can offer advice on social welfare entitlements), some or all of which might be relevant to you if you are already a parent or if you learn that you are to become a parent, depending on your particular need (medical, emotional, financial). More detailed advice and information is also available from sources such as Citizens Information (www.citizensinformation.ie) and the Department of Employment Affairs and Social Protection www.gov.ie.

Some of the most relevant financial supports for mature students, including student parents, are detailed in section 6 of this Guide. These include the Back to Education Allowance, SUSI Grant, Student Assistance Fund, 1916 Bursary Fund (lone parents, in particular, are a specific sub-group considered within the 1916 Bursary Fund), and the childcare bursary from UL's Financial Aid Fund.

SILVER APPLES CRÈCHE

Silver Apples Crèche is located on the UL campus and both students and staff can apply for places in this facility on a first come first serve basis. Children can be from 13 weeks old up to school going age (5 years old). Opening hours are from 8.30am to 6pm Monday to Friday for 49 weeks in the year. The majority of places offered are full-time however they do facilitate part-time (2/3 days per week). For information on fees, please reach out to Silver Apples Crèche directly. Students may be entitled to apply for the childcare bursary through UL Student Life (see p35 of this Guide) for further assistance with these fees. To make an enquiry please contact **E: SilverApplesCreche@ul.ie**

MOTHER AND BABY ROOM

There is a mother and baby room on campus for both staff and students who wish to feed/change their baby. The room is located in the Main Building, Room E0-010a and access is provided by UL's Human Resources Department. The Mature Student Office is happy to refer you if you wish to access this service.

BACK TO EDUCATION ALLOWANCE VS ONE PARENT FAMILY PAYMENT

If you are already on One-Parent Family Payment (OPFP) you will need to calculate whether it is more beneficial for you to apply for the Back to Education Allowance (BTEA) on returning to education or to remain on your current payment and apply for a student grant. You should factor your child/ren's age into this decision when planning for income support. If you are eligible for SUSI, you may receive the maintenance component of the SUSI grant together with your OPFP, whereas you cannot receive both BTEA and the maintenance grant simultaneously. However, if you are nearing the end of your OPFP, BTEA may be of greater benefit to you because it is paid for the duration of your programme of study. See https://www.citizensinformation.ie/en/social_welfare/social_welfare_payments/back_to_education/ for more information.



Preparatory
Programmes
for Mature Students

Mature Student Access Certificate

The Mature Student Access Certificate (MSAC) is an alternative pathway to studying full time at undergraduate level at the University of Limerick (UL).

The aim of the programme is to build confidence in those who have been out of formal education for an extended time but are interested in studying as an undergraduate for the first time. More than 100 students have passed through the MSAC to full time undergraduate degrees and further studies.

The MSAC is a blended programme covering a range of topics that will help you succeed. Examples include:

- Computer Skills
- Study Skills
- Mathematics
- Discipline specific topics such as science, history and literature

Students who complete the MSAC are able to enter directly into certain undergraduate courses once they have achieved the minimum required QCA*. Examples of courses with direct progression:

- Bachelor of Arts LM002
- BSc Computer Science LM121
- Bachelor of Engineering LM116
- Bachelor of Business LM050

To offer a course that continues to benefit and enrich the learning of mature students, the MSAC is currently undergoing a complete review. This is to make sure that the subjects, structure and benefits of attending the MSAC match the needs of those interested in studying at UL.

For information on previous Mature Student Access Certificate programmes or general queries, please contact maturestudentoffice@ul.ie.

* Entry to some courses also require students to achieve a minimum grade in Maths for STEM

The Mature Student Access Certificate will facilitate you to develop core skills which will be very useful to you in third-level.

Maths For Stem Certificate

Leading to QQI Maths for Stem Level 5 Special Purpose Award (5S2246)

This programme is offered by the Further Education and Training Division of Limerick and Clare Education and Training Board in partnership with the University of Limerick (UL). It is designed for learners who wish to improve their competency and knowledge in mathematics particularly as it relates to work or study in the Sciences, Technology, Engineering and Mathematics (STEM) disciplines.

The Maths for STEM Certificate is recognised by UL as equivalent to Higher Level Leaving Certificate Mathematics (HLLCM) for the purposes of meeting the minimum entry maths requirement, for mature applicants, to certain degree programmes. A Merit in the Maths for STEM Certificate is deemed equivalent to a H4 in HLLCM, while a Distinction is deemed equivalent to a H3.

The course content is set out in the Award Specification for the QQI Maths for STEM Award (5S2246) (see: <https://qsearch.qqi.ie/WebPart/AwardDetails?awardCode=5S2246>). The following mathematical topics are covered:

1. Mathematical Proficiency
2. Number
3. Set Theory and Logic
4. Algebra
5. Functions and Calculus
6. Geometry and Trigonometry
7. Probability and Statistics

PROGRESSION FROM PROGRAMME

Many undergraduate programmes at UL now offer entry from specific QQI courses. In 2024, entry routes from level 5 courses to over 30 courses were available. If you qualify as a mature student, you can apply through the CAO as both a mature and QQI applicant. For more information on QQI, scan this code:



Achievement of the minimum required grade in the Maths for STEM Certificate does not guarantee participants a place on a relevant degree programme. Participants will still be assessed on a competitive basis, as normal for all mature applicants to UL (see Section 7 of this Guide).

PROGRAMME DELIVERY

The course is delivered via blended learning. Classes take place in UL's Access Campus on Wednesday evenings. An additional three hours of online lecture content and materials will also be delivered each week. Participants on the course are registered learners of Limerick and Clare Education and Training Board.

Applicant requirements for entry in September 2025:

- Mature-age applicants must be aged 22 years or older by 1st January 2025.
- Hold a minimum of a Distinction in a QQI / FETAC maths award at Level 4 or a Pass in Ordinary Level Leaving Certificate Mathematics or equivalent
- Have good IT skills and good English language skills

Other Access Courses in Limerick

Both Mary Immaculate College (MIC) and Technological University of the Shannon (TUS) also offer access courses which are designed specifically to prepare mature students for entry to third-level education. MIC offers three courses:

- Pre-University Programme
- Foundation Certificate for Mature Learners
- Teacher Education Access Programme for Mature Learners

Further information on these courses is available from the MIC Admissions Office,
T: 061-204348, E: admissions@mic.ul.ie

TUS offers one access course:

- Certificate in Transition to Higher Education (Foundation Programme)

Further information on this course is available from the TUS's Flexible Learning Department,
T: 061-293802, visit <https://tus.ie/flexible/> or E: flexible@tus.ie



Making an Application

What are the entry requirements?

Each mature student application is reviewed individually. We look at past studies, work and personal experience based on your written CAO application.

Some courses sometimes have an interview/ audition. If you select Mature Student on your CAO form, you will not be assessed based on your Leaving Certificate. You can still ask to be assessed on your Leaving Certificate or QQI level 5/6.

Some programs at UL have minimum academic requirements, like higher level Leaving Certificate Mathematics for some Engineering courses. You can find these requirements on the online course page or in this guide.

If you already have a third-level qualification or relevant experience, you may be able to be considered under UL's Recognition of Prior Learning Policy, visit this link:

<https://www.ul.ie/priorlearning>



Initial steps to consider

There are a number of key steps which are advisable for mature students to undertake prior to making an application for an undergraduate programme in UL.

1. RESEARCH PROGRAMMES OF INTEREST

One of the most important steps when beginning your higher education journey is to decide on what degree programme is for you. We encourage you to look at the variety of undergraduate courses on offer at UL either online or in the student prospectus. Degree programmes in the same discipline can often have important differences, so it is important to look at the course details and career outcomes so you know the course you are putting on your CAO form is right for you. For more information on courses on offer and their breakdowns, scan this QR code:



If you are interested in where a particular degree may take you, have a look at the Using Your UL Degree page on the Cooperative Education & Careers Division website (www.ul.ie/cecd/students/careerservices/options).

2. EDUCATIONAL GUIDANCE

'Guidance' refers to a range of activities designed to assist people to make appropriate learning choices. It can be very useful to meet with a guidance counsellor to talk through your learning options before making your application. A guidance counsellor can help you to identify the wide range of opportunities which are open to you and can help you to consider your decision to return to third-level education from a holistic perspective e.g. Have you taken into account the kinds of support you will need at home? Have you looked at possible part-time options? Have you fully looked at the financial impact of returning to study? Have you considered study options available in different colleges?

The University of Limerick has a dedicated Careers Adviser for mature students. Patsy Ryan works with the Cooperative Education and Careers Division and may be available, outside of academic term time, to meet with or advise any prospective mature student who is considering applying to UL.

Patsy can be contacted at **T: 061-234227** or **E: patsy.ryan@ul.ie**.

Adult Education Guidance Services (AEGS) are also available in most counties in Ireland and provide guidance and information services to various designated client groups. See www.aegai.ie for contact details for your nearest service. AEGS information services are generally open to members of the public.

3. OPEN EVENINGS & INFORMATION SESSIONS

UL hosts several open days and information sessions throughout the academic year (September to May). To be updated on deadlines, open days and other information sessions, please email maturestudentoffice@ul.ie to join our mailing list.

4. COMPLETE AN ACCESS COURSE OR OTHER PROGRAMME OF STUDY

If it has been a long time since you sat your Leaving Certificate, or if you didn't complete your formal schooling when you were younger, it can be a good idea to consider doing some preparatory study before applying for a degree programme. By doing this, you will get an opportunity to build up your confidence, particularly in relation to your learning skills. It can also give you the opportunity to experience the commitment required to undertake study on a full-time basis.

Useful courses to undertake before applying for degree programmes can be third-level 'access' courses, such as UL's Mature Student Access Certificate; QQI programmes (offered by post-leaving cert colleges or adult education centres); or Leaving Certificate subjects which can be studied for either independently or through your local adult education centre or VTOS programme.

UL has developed several pathways to studying at Undergraduate level. These include pathways through QQI, Access Programmes and Recognition of Prior Learning. These routes can be used by mature students as a chance to prepare for studying in disciplines such as nursing, business, engineering and more. We encourage you to look through all available material and reach out to the mature student office to find the path that works for you.

5. COMPUTER SKILLS

Being comfortable using computers before you start on a degree programme will make your life so much easier! Computer skills really are 'life skills' when it comes to studying in third-level. It is highly recommended, if you do not currently have good computer skills (e.g. familiarity with using email, the internet, Word, and Excel), that you undertake a basic computer skills course before starting your degree programme as the skills you develop will be invaluable to you during your time at UL and will give you much more confidence when starting in first year.

6. LANGUAGE REQUIREMENTS

English Language Requirements: For mature applicants for whom English is not their first language, proof of competence in the English language may be required as part of your application to UL. For full details regarding acceptable qualifications and specific English language requirements please consult the University of Limerick language centre website at www.ul.ie/languagecentre. Where assessment tests or interviews are held in English however, as part of the mature student application assessment, success in these may be deemed sufficient proof of English language competency.

Non-EU applicants to UL should apply through the International Education Office at:
T: 061-213034 E: international@ul.ie W: www.ul.ie/international

Foreign Language Requirements: Mature applicants who are applying for programmes with a requirement to have Leaving Certificate level language, or equivalent, prior to entry, are strongly recommended to spend time improving their language skills in the year prior to entry to the degree course. This can be done by attending refresher language classes in language institutes or adult education colleges; immersing themselves in speaking the language in the country of origin; or attending social clubs or language circles where the language is spoken. Interviews for degree programmes where a language is a significant component of the course of study, will more than likely be held in the language to be studied.

7. FINANCIAL CONSIDERATIONS

Consider the financial implications of coming back to study on a full-time basis for up to four years. We encourage you to consider what commitments such as childcare, commuting, etc. you may have and how you will balance these with your studies.

How To Apply

ALL PROGRAMMES

To submit an application for consideration as a mature student, the following steps must be completed:

- All UL undergraduate courses accept mature applicants between November and February through the CAO. If you are applying after this, please ensure that the course you are choosing will accept late applications.
- You must select “Mature” on the CAO application to be considered on this basis. You can still select to be considered based on QQI results, Leaving Certificate or equivalent.
- Documents must be sent within 10 working days of your application being made. Documents should be sent to the CAO office in Galway.

See www.ul.ie/academic-registry/prospective-students/applying-UL/mature-students for full details on courses that are open for late applications.

ADDITIONAL APPLICATION REQUIREMENTS FOR SOME PROGRAMMES

- Requirements for mature students and additional documents can be found under the course name on the mature student office website. Requirements vary from course to course, so it is important to check these for each of the UL undergraduate courses you are applying to.
- Applicants to LM103 Paramedic studies will be required to attend an interview. Please ensure you also fulfil the requirements for a C1 license. Failure to meet these criteria or to provide supporting documents before the deadline may nullify any potential offers of place.
- Applicants to all Nursing and Midwifery programmes must also apply to the Nursing and Midwifery Board Ireland (NMBI) to register to sit a written assessment test which the NMBI runs. The written assessment takes place on one date only, usually in April. Performance in this test is the only basis on which places on Nursing and Midwifery programmes are allocated to mature applicants. Further information is available from:
www.nmbi.ie/Careers-in-Nursing-Midwifery/How-to-apply/Mature-Applicants
E: education@nmbi.ie

Non-EU applicants should contact the International Education Division
T: +353-61-213034 F: +353-61-213062 E: international@ul.ie

Writing a Personal Statement

Some, but not all, programmes require a tailored personal statement from mature student applicants. A personal statement gives you an opportunity to provide additional information on why you wish to pursue a degree programme. This is your opportunity to ‘sell’ yourself and to emphasise the experience and/or interests you have which are relevant to your chosen course. A personal statement is important, especially if you are applying to a competitive programme for which there is a high demand for places. In such cases, if a tailored personal statement (if specified as an application requirement) is not included with your application, you may not be short-listed for consideration. Be specific and proactively demonstrate how your experience or your interests match the course you are interested in doing.

Your personal statement should be no greater than one side of a single A4 page and cover the following areas:

1. Reasons for wishing to undertake LMXXX.
 2. Programme’s potential contribution to your future career or life plans
 3. Highlight relevant experiences or skills gained through employment, voluntary work, or personal interests which have prepared you to undertake LMXXX.
 4. Your knowledge and understanding of the career area in which you are interested
 5. Any specific preparation you have undertaken in anticipation of commencing LMXXX.
- Title your document ‘Personal Statement for LMXXX’
 - Ensure that you include your CAO number on your Personal Statement



How are Applications Assessed?

GENERAL ASSESSMENT INFORMATION

Mature student applications are assessed by academic staff from the programme to which you have applied. Each mature student application is considered on an individual basis. Academic qualifications, work and life experience, motivation and overall potential to be successful on your chosen programme of study are considered and evaluated from your written CAO application and sometimes also an interview. Applicants may be short-listed if the number of applications received for a particular programme is high. Please bear in mind when applying that some programmes in UL may look for specific academic requirements prior to entry e.g. some Engineering programmes will require applicants to have higher level Leaving Certificate mathematics, or equivalent. See section 7 for further information on application and interview assessment criteria.

Special Mathematics Examination: Faculty of Science & Engineering

The Faculty of Science & Engineering run a Special Mathematics Examination, which can be used as an alternative to Higher Level Leaving Certificate Mathematics for entry to Undergraduate Programmes in the Faculty. It is based on the Higher-Level Mathematics syllabus. Candidates taking the examination must achieve the equivalent of the Leaving Certificate grade required for entry to the programmes to which they are applying.

Please note the following:

- Applicants must have satisfied all other entry requirements for the programmes to which they are applying.
- Applicants must also have achieved the points required for entry to the programme.
- Applicants who achieve the required result in the Special Mathematics Examination and satisfy all other entry requirements and achieve the required points for the programme will be considered for an offer in Round 2 as part of the CAO offers allocation process.

Further details on the examination, including the application process and previous exam papers, are available from the Faculty website here

Additional Courses accepting the Special Maths Exam to meet matriculation requirements: LM092, LM094, LM095, LM096 and LM097

Can I defer my place?

A student who is offered a place may, under certain conditions, defer entry for one year. In order to defer entry, on receipt of an offer of a place from the Central Applications Office (CAO) a student should:

- Write/email immediately to the Undergraduate Admissions Office setting out reasons for the request. Mark "DEFERRED ENTRY" clearly on the envelope/ message line.
- The letter/email must arrive in the Undergraduate Admissions Office, at least two days before the "Reply Date" shown on the Offer Notice. Please quote your name, CAO number and course in the letter/email.
- Applicants should not accept the offer through the CAO.
- In order to take up the deferred place, re-apply through CAO by 1st February of the succeeding year placing the deferred course as the first and only choice, and tick the deferred indicator box on the CAO application form.

A decision on the request will be communicated to the applicant.

Mature students who choose to decline rather than defer their place will need to reapply to UL through the CAO the next year. This will be a completely new application, and no guarantee of offer can be made based on your previous application. You will have to take into consideration the requirements for the year in which you are applying and resubmit your documentation.

Mature Student Applications are assessed by academic staff from the relevant faculty or programme to which you have applied. Each Mature Student Application is considered on an individual basis.

Costs and Financial Supports

Programme Fees

For full-time undergraduate programmes, there are three main categories of fees which apply:

- TUITION FEES
- STUDENT CONTRIBUTION CHARGE
- STUDENT CENTRE LEVY

TUITION FEES

Tuition fees for which you are liable are based on a number of criteria including citizenship, residency, course and prior education. Typically if you are a first-time entrant to higher education, have been resident in the EU for 3 of the 5 years prior to starting your course, and you fulfil the releseamusvant citizenship criteria, you will be deemed eligible for “free fees”, i.e. the Irish Government covers the cost of your tuition fees. Tuition fees may not be paid for students who are pursuing a second undergraduate programme, repeating a year of study or who hold a postgraduate qualification.

Further information on eligibility for the Free Fees Initiative is available on www.studentfinance.ie. Information on the tuition fees payable for UL courses is available from the UL Fees Office, **T: 061-202026; E: student.fees.office@ul.ie**

If you do have to pay tuition fees tax relief may be available for students on approved full-time and part-time undergraduate programmes. Programmes must be of at least two years duration. To qualify for relief, full tuition fees must be paid by the individual on his/her own behalf or on behalf of a spouse, child or person for whom the individual is the legal guardian. As claims should be made on the individual’s tax return to the Revenue Commissioners, proof of fee payment must be submitted with your claim.

STUDENT CONTRIBUTION CHARGE

All full-time undergraduate students are required to pay the Student Contribution charge, even if they are eligible for free tuition fees. This charge has been EUR3,000 for the past number of years. Eligible students may apply to the Student Universal Support Ireland (SUSI) to have this charge paid on their behalf (see Higher Education Grants section overleaf).

STUDENT CENTRE LEVY

The student levy for 2024/5 academic year was €100. This sum can change based on inflation. It is payable by all students and is not covered by the SUSI Grant. This levy contributes to the development of a number of student projects. See www.ulstudentlife.ie/leave-a-legacy-project/ for more details.

Cost of Living

The cost of living associated with being a full-time student very much depends on your individual circumstances. Typical costs can include rent, utilities, food, travel, books and materials, clothes, medical costs and social costs. As a mature student you may need to also factor in additional costs such as your mortgage, childcare costs, family support costs and so on.

It is strongly advisable that you spend some time working out the potential costs associated with being a full-time student. You can get further help to discuss budgeting and ways to finance your studies by emailing student.budgeting@ul.ie

Financial Support

There are a range of financial supports which are available for full-time undergraduate students in third-level. An excellent source of information on all of these is www.studentfinance.ie.

BACK TO EDUCATION ALLOWANCE

The Back to Education Allowance (BTEA) is a key financial support for many mature students. The BTEA allows qualifying persons (who are in receipt of certain social welfare payments) to retain those payments, subject to regular means-testing where applicable, whilst returning to full-time education in approved courses.

In general, to qualify for the BTEA participants must be aged 21 years or over, and be in receipt of specified social welfare payments for at least nine months prior to starting the first year of an approved third-level course. Persons awarded statutory redundancy under Irish legislation may have immediate access to the BTEA scheme (or within one year) of the award of the statutory redundancy, provided an entitlement to a relevant Social Welfare payment is established prior to commencing an approved course of study.

Full information on the BTEA, and on how to apply, can be obtained from your local Department of Social Protection Office or from:

www.welfare.ie/en/Pages/353_Back-to-Education-Allowance.aspx

STUDENT UNIVERSAL SUPPORT IRELAND (SUSI)

The student grant is another primary source of financial help available from the Irish State for students on full-time higher education courses. Support is available to eligible students in most colleges in Ireland as well as eligible Irish students in many colleges in Northern Ireland, the UK and other EU States.

SUSI – Student Universal Support Ireland (www.susi.ie) – is the online application system for all higher education grants for full-time students. For eligible students the grant helps with the various costs of participating in further or higher education. University of Sanctuary students can find further information by looking up “**International Protection Student Scheme (for FE/ HE Students)**” As the grants are means-tested, family and/or personal income is a key factor that will be assessed when you apply but there are also some other conditions.

If you think you are eligible for the student grant, you do not have to wait until you receive an offer of a place or enrol in college. You should make your application as early as possible after the April opening date. You can review eligibility criteria for SUSI by using the Eligibility Reckoner on the SUSI website www.susi.ie where you can quickly and easily self-assess whether you may be entitled to a full or partial grant depending on your circumstances. You are advised to make your application as soon as possible as only when your application has been completed in full and submitted to SUSI can your eligibility for funding be determined.

The SUSI grant may cover the student contribution fee or tuition fees, if these are payable, and also possibly a maintenance grant. Students cannot receive both a maintenance grant and the BTEA.

STUDENT ASSISTANCE FUND

The Student Assistance Fund (SAF) provides financial support to full or part-time students (other than students on access programmes) who are experiencing financial difficulties while attending college. The SAF is designed to provide a source of financial support in addition to a SUSI grant and is available to help with costs such as: books and class materials, rent, heating and lighting bills, food, essential travel, childcare costs, and medical costs. This Fund is managed by the Access Office in UL.

Applications to the Fund can only be made after you register as a student in September. The Mature Student Office advises all registered mature students when this Fund opens.

The Student Assistance Fund is funded by the Irish Government and part-funded by the European Social Fund.



FINANCIAL AID FUND

In conjunction with UL Student Life and the Postgraduate Students' Union, the University administers two types of financial aid. The Financial Aid Fund is supported by gifts from UL Alumni through the UL Foundation's Alumni Annual Fund Appeal and through UL Student Capitation. This scheme is designed to help students who experience short-term financial problems. If the student qualifies for assistance, she/he will receive an interest free loan. This loan is repayable in full prior to graduation.

Additionally, student parents who are experiencing financial difficulties can apply for a Childcare Bursary to support them with their childcare/child-minder costs.

If a student is experiencing financial difficulty and wishes to apply for either type of funding, they are encouraged to contact the UL Chaplaincy Service ([email john.campion@ul.ie](mailto:john.campion@ul.ie)), the Welfare Officer in the Students Union or the Student Information and Support Coordinator, [email studentsupport@ul.ie](mailto:studentsupport@ul.ie).

FUND FOR STUDENTS WITH DISABILITIES

The Fund for Students with Disabilities allocates funding to further and higher education colleges for the provision of services and supports to full-time students with disabilities. The Fund aims to ensure that students can participate fully in their academic programmes and are not disadvantaged by reason of a disability.

You do not have to be in first year of a course to be eligible under the Fund. Application for the first time can be made on your behalf during any year of study on an approved course. A claim under the Fund is made on behalf of an eligible student by UL following an assessment of need by the Disability Support Service. Applications cannot be made directly to the Fund by students. Students with disabilities enrolled in part-time courses, access or foundation courses in higher education institutions or short courses are not eligible for consideration under the Fund.

The Fund for Students with Disabilities is funded by the Irish Government and part-funded by the European Social Fund.

SCHOLARSHIPS

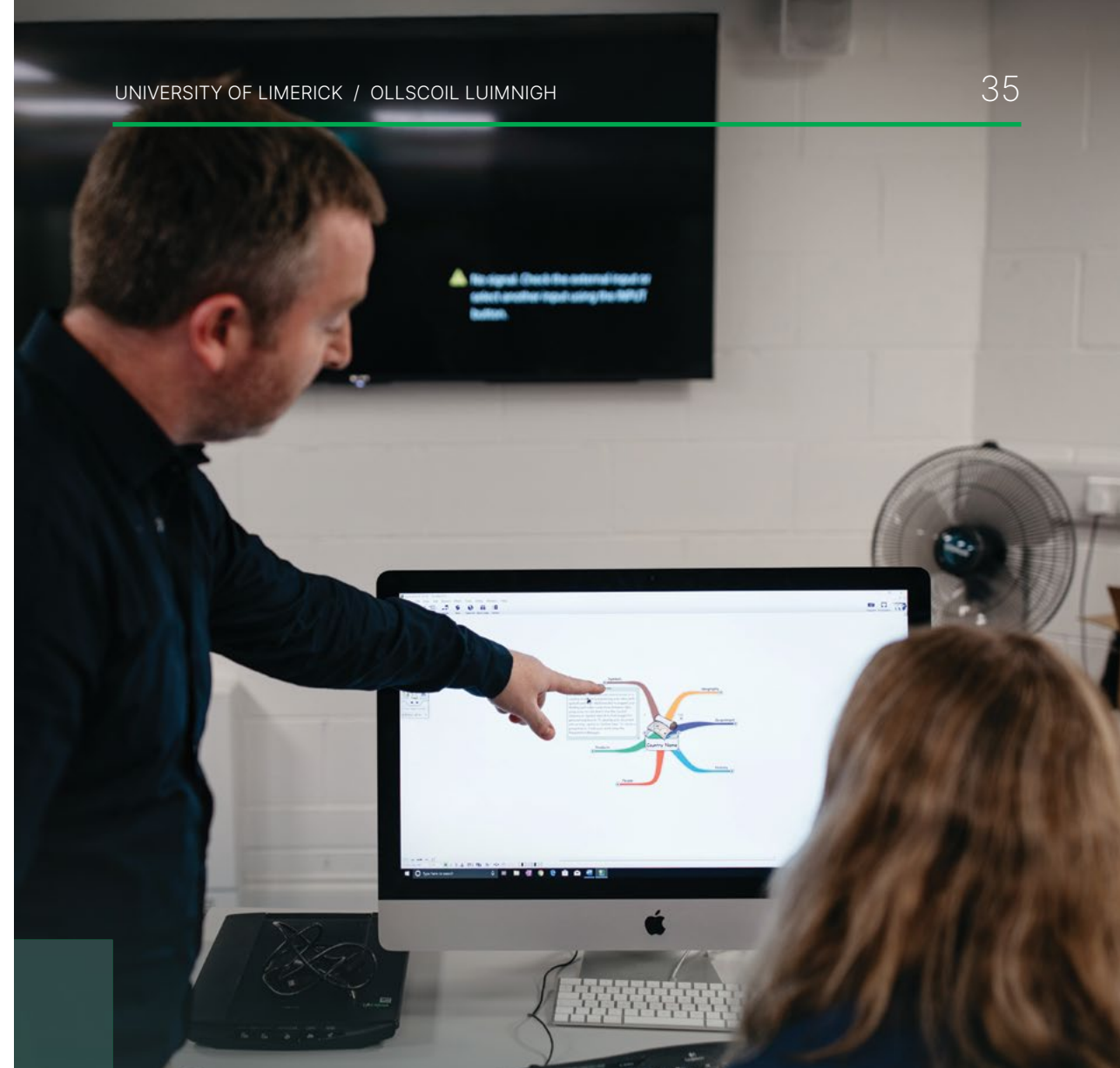
Details on all scholarships available within UL are available from the UL prospectus (<https://www.ul.ie/courses/about-ul/academic-scholarships>). The most relevant scholarships for mature students are listed below.

- 1916 Bursary Fund**

The 1916 Bursary Fund, funded by the Department of Education and Skills, commemorates the centenary of 1916 as part of an overall series of measures to encourage participation and success by students from sections of society that are significantly under-represented in higher education. Bursaries worth €5,000 per annum for the duration of studies are available. Applicants must be assessed as socio-economically disadvantaged to be eligible. 20% of the 1916 Bursaries are reserved for students who are lone parents. See <https://hea.ie/funding-governance-performance/funding/student-finance/1916-bursary-fund/> for further details.
- University of Sanctuary Bursaries**

The University of Sanctuary Bursaries offer opportunities for those from refugee and asylum-seeking communities to study at the University of Limerick, including new mature students. The bursary offers support towards the costs of higher education, including fee waivers, if applicable. If you are a new entrant to first year on any full-time undergraduate course in UL and meet the eligibility criteria (international protection applicant or have been granted international protection) please see full details on www.ul.ie/ul-university-sanctuary.
- Uversity Higher Education Scholarships for Adult Learners**

Uversity's Scholarships are intended to unlock adult learners' potential. By providing multi-annual financial support, Uversity's Scholarships aim to remove the financial barriers to pursue a Bachelor's degree for the first time. Scholarships are not limited to particular subject areas and will enable individuals 23 years or older to complete a Bachelor's degree in one of the participating institutions in the Republic of Ireland or Northern Ireland. See www.u-versity.eu/ for further details.



Application and Interview Assessment Criteria

Detailed and accessible information is available online on the UL mature student website. When making your application, include all requested information and do not exceed any given word count. Requirements are subject to update prior to February. Details information on mature student requirements, interviews and other assessments can be found online under "Future Students":
Mature Student Office | University of Limerick (ul.ie)



Education and Health Sciences

2025 Entry

Code	Programme / Group Of Programmes	Entry Requirements*	Minimum Entry and/or Application Requirements	Application Assessment Criteria	Interview Assessment Criteria
LM038	BA PSYCHOLOGY & SOCIOLOGY	5	Submission of essay with CAO application	<ul style="list-style-type: none"> • Prior education • Work/life experience • Transferable skills • Essay 	No interview. Places awarded on basis of application & essay only.
LM089	BSC SPORT & EXERCISE SCIENCES	10	N/A	Applicants are required to undertake the Mature Students Admissions Pathway (MSAP) test. See https://msap-ireland.acer.org/ for test dates, details on how to register and prepare for the test.	No interview. Places awarded on basis of performance in the MSAP.
LM100	BSC PHYSIOTHERAPY	5			
LM102	BSC PSYCHOLOGY	11			
LM090	BSC PHYSICAL EDUCATION WITH CONCURRENT TEACHER EDUCATION	11	N/A	In your CAO Statement of interest, please include: <ul style="list-style-type: none"> • Answers to questions listed in mature student requirements online • Details of past studies • Relevant work/ voluntary experience • Evidence of preparation for studies • Details of motivations including goals for future 	<ul style="list-style-type: none"> • Personal information and background • Knowledge of the programme • Relevant life / work experience • Coping with the programme

*Guideline only. These figures may differ slightly for 2025 as they are calculated from the total number of places available on a programme in any year. However, not all mature student places may be filled, as it depends on the number and quality of applications received in any year.

Education and Health Sciences

2025 Entry

Code	Programme / Group Of Programmes	Entry Requirements*	Minimum Entry and/or Application Requirements	Application Assessment Criteria	Interview Assessment Criteria
LM091	BA LANGUAGES WITH CONCURRENT TEACHER EDUCATION	3	HB3 (H3) in one of the core languages (French/German/Irish/Japanese/Spanish) Submission of tailored Personal Statement for LM091 with CAO application	<ul style="list-style-type: none"> • Prior education – Leaving certificate performance and additional educational/professional qualifications • Relevant work / voluntary experience • Evidence of desire to do this course • Demonstration of an understanding of the nature and philosophy of languages education • Overall application quality 	Places normally awarded on basis of application and personal statement alone. An interview may be requested if deemed helpful to the assessment of the application, focusing on: <ul style="list-style-type: none"> • Understanding of teaching languages as a career • Evidence of language proficiency • Communication skills • Relevant knowledge and experience • Knowledge of course and preparedness for third-level
LM092	BSC SCIENCE WITH CONCURRENT TEACHER EDUCATION (Biology with Physics or Chemistry or Agricultural Science)	10	HC2 (H4) in at least one Leaving Cert Science subject AND OC2/HD3 (O4/H7) in Leaving Cert Mathematics or equivalent Submission of tailored Personal Statement for LM092 / LM096 with CAO application	<ul style="list-style-type: none"> • Prior education - Leaving Cert performance and additional educational/professional qualifications • Relevant work / voluntary experience • Evidence of desire to do this course • Demonstration of an understanding of the nature and philosophy of science education • Overall application quality 	<ul style="list-style-type: none"> • Understanding of teaching science as a career • Communication skills • Relevant knowledge and experience • Knowledge of course and preparedness for third-level
LM096	BSC SCIENCE WITH CONCURRENT TEACHER EDUCATION (Physical Sciences with Physics and Chemistry)	3	Submission of tailored Personal Statement for LM092 / LM096 with CAO application	<ul style="list-style-type: none"> • Overall application quality 	Interviews may be conducted in person or over the phone
LM094	BACHELOR OF EDUCATION IN GRAPHICS AND CONSTRUCTION TECHNOLOGY	10	Submission of tailored Personal Statement for LM094 / LM095 with CAO application	<ul style="list-style-type: none"> • Prior education, including any third-level qualifications or other courses completed • Personal statement • Preparedness for teaching • Demonstration of an understanding of the nature and philosophy of technology education 	No interview. Places awarded on basis of application and Personal Statement.
LM095	BTECH MATERIALS AND ENGINEERING TECHNOLOGY WITH CONCURRENT TEACHER EDUCATION	9	Submission of tailored Personal Statement for LM094 / LM095 with CAO application	<ul style="list-style-type: none"> • Demonstration of an understanding of the nature and philosophy of technology education 	

*Guideline only. These figures may differ slightly for 2025 as they are calculated from the total number of places available on a programme in any year. However, not all mature student places may be filled, as it depends on the number and quality of applications received in any year.

Education and Health Sciences

2025 Entry

Code	Programme / Group Of Programmes	Entry Requirements*	Minimum Entry and/or Application Requirements	Application Assessment Criteria	Interview Assessment Criteria
LM097	BSC MATHEMATICS AND COMPUTER SCIENCE WITH CONCURRENT TEACHER EDUCATION	2	<p>HC2 (H4) in Leaving Certificate Mathematics or equivalent or Merit in QQI Maths for STEM (5S2246/5N0556) or Pass in UL Special Maths exam</p> <p>Personal Statement for LM097 posted to the CAO in Galway with additional documents.</p>	<ul style="list-style-type: none"> Evidence of prior learning or relevant studies such as QQI, Leaving Certificate or online studies. Relevant work / voluntary experience Evidence of desire to do this course Demonstration of an understanding of the nature and philosophy of mathematics education Overall application quality 	<ul style="list-style-type: none"> Understanding of teaching mathematics and computer science as a career Communication skills Relevant knowledge and experience Knowledge of course and preparedness for third-level <p>Interviews may be conducted in person or over the phone.</p>
LM103	BSC PARAMEDIC STUDIES	18	<p>A valid provisional C1 or full C1 licence is required prior to offer of a place on the programme. Applicants must produce a full C1 licence by the end of Year 1. Penalty points may preclude progression.</p> <p>Please note this is an entry requirement, proof of licences will be requested.</p>	No assessment test for 2025 entry.	<p>Eligible mature applicants will be called to attend for interview.</p> <ul style="list-style-type: none"> Demonstration of lifelong learning through examples Knowledge of the perceived attributes of a modern Paramedic Knowledge of the modern Paramedic role Examples of calmness and decision making under pressure Examples of common conditions encountered by Paramedics in Ireland Students admitted to the programme are required to undergo and successfully complete a Garda Vetting process and an Occupational Health Clearance

*Guideline only. These figures may differ slightly for 2025 as they are calculated from the total number of places available on a programme in any year. However, not all mature student places may be filled, as it depends on the number and quality of applications received in any year.

Education and Health Sciences

2025 Entry

Code	Programme / Group Of Programmes	Entry Requirements*	Minimum Entry and/or Application Requirements	Application Assessment Criteria	Interview Assessment Criteria
LM104	BACHELOR OF SCIENCE IN OCCUPATIONAL THERAPY	New Course	Minimum Grade O3/H7 in Physics, Chemistry, Physics with Chemistry, Biology, Physical Education or Agricultural Science or equivalent QQI/ professional experience. Minimum F6 or equivalent in Maths.	Applicants should submit "LM104 Application Statement" to the CAO offices in Galway. Your statement should include: details of relevant studies and experience; motivation for studies; understanding of commitment required;	Applicants may be called for interview to further discuss their application statement or gain further insight into the applicants suitability for the course.
LM105	BSC IN EXERCISE AND HEALTH FITNESS MANAGEMENT	5 (additional spaces may be available dependant on application numbers)	Personal Statement for LM105 posted to the CAO in Galway with additional documents.	<ul style="list-style-type: none"> • Prior Education • Relevant work/ voluntary experience • Health Fitness/Sport related awards • Personal statement outlining why you want to take the course and career goals • Overall application quality 	<ul style="list-style-type: none"> • Knowledge/ understanding of course content and commitment required • Personal knowledge and experience • Relevant life / work experience • Relevant life / work / professional competencies
LM150	BSC NURSING (General)	8	N/A	<ul style="list-style-type: none"> • Mature applicants must apply to the Nursing and Midwifery Board Ireland (NMBI), in order to register to sit a written assessment test. Please refer to the link below for dates. <p>Further information is available from: www.nmbi.ie/Careers-in-Nursing-Midwifery/Howto-Apply/Mature-Applicants</p>	No interview. Places awarded on basis of assessment test performance only.
LM152	BSC NURSING (Mental Health)	11			
LM154	BSC NURSING (Intellectual Disability)	7			
LM156	BSC MIDWIFERY	4			

*Guideline only. These figures may differ slightly for 2025 as they are calculated from the total number of places available on a programme in any year. However, not all mature student places may be filled, as it depends on the number and quality of applications received in any year.

Science & Engineering

2025 Entry

Code	Programme / Group Of Programmes	Entry Requirements*	Minimum Entry and/or Application Requirements	Application Assessment Criteria	Interview Assessment Criteria
LM058	BSC FINANCIAL MATHEMATICS	5	<p>HB3 (H3) in Leaving Cert Maths or equivalent</p> <p>or</p> <p>Distinction in QQI Maths for STEM (5S2246/5N0556)</p> <p>or</p> <p>Pass in UL Special Maths exam</p> <p>Personal Statement for LM058 posted to the CAO in Galway with additional documents.</p>	<ul style="list-style-type: none"> • Demonstrated mathematical ability • Prior education • Relevant work experience • Personal statement • Interest in programme 	In rare cases, an informal interview may be scheduled to clarify questions arising from the application material.
LM063	BSC TECHNOLOGY MANAGEMENT	5	<p>OB3 (O3/H7) in Leaving Certificate Maths or equivalent</p> <p>Personal Statement for LM063 posted to the CAO in Galway with additional documents.</p>	<ul style="list-style-type: none"> • Prior learning in business, engineering, technology with examples of ability to solve problems and deliver results. • Interest in programme - evidence of understanding what the programme involves • Clearly show a desire to return to education • Work / voluntary experience - candidate to show a proven ability to be motivated to work. Relevant experience to be highlighted, transferable skills to be noted 	<ul style="list-style-type: none"> • Preparedness for third-level, particularly the pace at which difficult material is covered • Relevant knowledge and experience • Communication skills

*Guideline only. These figures may differ slightly for 2025 as they are calculated from the total number of places available on a programme in any year. However, not all mature student places may be filled, as it depends on the number and quality of applications received in any year.

Science & Engineering

2025 Entry

Code	Programme / Group Of Programmes	Entry Requirements*	Minimum Entry and/or Application Requirements	Application Assessment Criteria	Interview Assessment Criteria
LM082	BSC CONSTRUCTION MANAGEMENT & ENGINEERING	9	Personal Statement for LM082 posted to the CAO in Galway with additional documents.	<ul style="list-style-type: none"> • Prior education - key subject performance (business, engineering, technology / construction) with a proven ability to engage and deliver • Other courses completed • Interest in programme – evidence of understanding what the programme involves • Evidence of desire to do this course • Work / voluntary experience - candidate to show a proven ability to be motivated to work. Relevant experience to be highlighted, transferable skills to be noted 	<ul style="list-style-type: none"> • Preparedness for third-level, particularly the pace at which difficult material is covered • Relevant knowledge and experience • Communication skills
LM068	BSC FOOD SCIENCE & HEALTH	9	Experience in a food hygiene, science, health or related field. Experience can be prior studies, work or volunteering.	CAO statement of interest should include: Answers to the questions listed in the mature student requirements for the course; Information on personal motivation, experience and how you have prepared for the degree programme.	Places normally awarded on basis of application alone. An interview may be requested if deemed helpful to the assessment of the application. Within this, motivation for application, relevant academic and work experience, preparedness for third- level education and communication skills will be assessed.
LM076	BSC PRODUCT DESIGN & TECHNOLOGY	8	<p>Personal Statement for LM076 posted to the CAO in Galway with additional documents.</p> <p>Students will be contacted by email/ text to submit a portfolio after applications close. Information regarding application deadlines can be found online under mature student requirements.</p>	<ul style="list-style-type: none"> • Demonstrable interest in programme • Understanding of design as a career • Prior education and learning e.g. educational qualifications, IT skills, transferable skills etc. • Evidence of desire to do the course 	<ul style="list-style-type: none"> • Demonstrate an understanding of the course • Evidence of creative thinking and problem-solving ability • Relevant knowledge and experience • Preparedness for third level • Communication skills • Supporting work that demonstrates creative and/ or problem solving ability (e.g. sketches, designed objects, etc.)

*Guideline only. These figures may differ slightly for 2025 as they are calculated from the total number of places available on a programme in any year. However, not all mature student places may be filled, as it depends on the number and quality of applications received in any year.

Science & Engineering

2025 Entry

Code	Programme / Group Of Programmes	Entry Requirements*	Minimum Entry and/or Application Requirements	Application Assessment Criteria	Interview Assessment Criteria	
LM077	BE AERONAUTICAL ENGINEERING	5	HC2 (H4) in Leaving Certificate Maths or equivalent	Personal Statement for the course you are applying to posted to the CAO in Galway with additional documents. Applicants should include: <ul style="list-style-type: none"> • Relevant studies • Related work or volunteering experience • Evidence of preparation for studies • Evidence of personal interest • What Degree options you may be interested in studying and why 	<ul style="list-style-type: none"> • Preparedness for third-level, particularly the pace at which difficult material is covered • Relevant knowledge and experience • Communication skills • Understanding of programme 	
LM115	BE CHEMICAL & BIOCHEMICAL ENGINEERING	4	or			
LM116	BE ENGINEERING <i>Common entry with choice (subject to restriction) to pursue defined Degree Options in any of the following:</i> <ul style="list-style-type: none"> • Biomedical Engineering • Mechanical Engineering • Civil Engineering • Design and Manufacture • Digital Mechatronic Engineering 	32	Merit in QQI Maths for STEM (5S2246/5N0556) or Pass in UL Special Maths exam			
LM118	BE/ME ELECTRONIC & COMPUTER ENGINEERING	8	(1) HC2 (H4) in Leaving Certificate Maths (or equivalent) or (2) Merit in QQI Maths for STEM (5S2246/5N0556) or (3) Pass in the UL Special Mathematics Entrance Examination or (4) demonstrable evidence in mathematical competencies at a suitable level.			Interviews are sometimes called to further discuss information included in or missing from your application.
LM093	BSC EQUINE SCIENCE	4	H2 or equivalent in a Science subject plus one other. Relevant experience may be accepted in lieu. Personal Statement for LM093 posted to the CAO office in Galway.			<ul style="list-style-type: none"> • Relevant work experience • Other courses completed • Evidence of desire to do this course

*Guideline only. These figures may differ slightly for 2025 as they are calculated from the total number of places available on a programme in any year. However, not all mature student places may be filled, as it depends on the number and quality of applications received in any year.

Science & Engineering

2025 Entry

Code	Programme / Group Of Programmes	Entry Requirements*	Minimum Entry and/or Application Requirements	Application Assessment Criteria	Interview Assessment Criteria
LM180	CERT/DIPLOMA EQUINE SCIENCE	1	H2 or equivalent in a Science subject plus one other. Relevant experience may be accepted in lieu. Personal Statement for LM180 posted to the CAO office in Galway.	<ul style="list-style-type: none"> • Evidence of experience studying science • Relevant work experience • Other courses completed • Evidence of desire to do this course 	Places normally awarded on basis of application. An interview may be requested if deemed helpful to the assessment of the application.
LM099	BARCH ARCHITECTURE	5	“LM099 Application Statement” must be posted to the CAO office in Galway with other supporting documents.	Your application statement should include: Relevant work, volunteerings or studies; Personal interest in architecture; Understanding of course structure and commitment required	<ul style="list-style-type: none"> • Personal information and background • Knowledge of the programme & architecture-related careers • Relevant life / work experience • Transferable skills • Preparedness for course demands • Ability to cope with academic workload <p>Mature applicants are required to attend for interview and to bring material to support their application to that interview</p>

*Guideline only. These figures may differ slightly for 2025 as they are calculated from the total number of places available on a programme in any year. However, not all mature student places may be filled, as it depends on the number and quality of applications received in any year.

Science & Engineering

2025 Entry

Code	Programme / Group Of Programmes	Entry Requirements*	Minimum Entry and/or Application Requirements	Application Assessment Criteria	Interview Assessment Criteria
LM121	BSC COMPUTER SCIENCE <i>Common entry with choice to pursue defined Degree Options in any of the following:</i> <ul style="list-style-type: none"> • Computer Systems • Computer Games Development • Mobile Communications and Security 	17	Evidence or certification from an appropriate online programming course such as those provided by Coursera or Udacity, etc or QQI level 5 or 6 qualification in one of the following domains: <i>Web/Internet, Software, Programming, with a minimum of a Distinction grade in the programming components</i>	“LM099 Application Statement” must be posted to the CAO office in Galway with other supporting documents. Your statement should include: <ul style="list-style-type: none"> • Other courses completed • Programming portfolio - <i>related to programming course undertaken</i> • Mathematical competency • Prior education • Work / voluntary experience • Personal statement • Interest in programme 	<ul style="list-style-type: none"> • Discussion of programming portfolio (related to programming course undertaken) • Ability to cope with mathematical concepts • Preparedness for third-level and associated workload • Personal information and background • Knowledge of the programme & related careers • Relevant life / work experience
LM113	BACHELOR OF SCIENCE IN INTERACTION DESIGN	5	Minimum H7/03 in Leaving Certificate Maths or Special Mathematics Exam or relevant QQI/ other qualification	Applicants should submit “LM113 Application Statement” to the CAO offices in Galway. Your statement should include: details of relevant studies in a science subject; motivation for studies; understanding of commitment required;	Applicants may be called for interview to further discuss their application statement or gain further insight into the applicants suitability for the course.
LM114	BACHELOR OF SCIENCE MUSIC, MEDIA AND PERFORMANCE TECHNOLOGY	5	Minimum H7/03 in Leaving Certificate Maths or Special Mathematics Exam or relevant QQI/ other qualification	Applicants should submit “LM114 Application Statement” to the CAO offices in Galway. Your statement should include: details of relevant studies in a science subject; motivation for studies; understanding of commitment required;	Applicants may be called for interview to further discuss their application statement or gain further insight into the applicants suitability for the course.

*Guideline only. These figures may differ slightly for 2025 as they are calculated from the total number of places available on a programme in any year. However, not all mature student places may be filled, as it depends on the number and quality of applications received in any year.

Science & Engineering

2025 Entry

Code	Programme / Group Of Programmes	Entry Requirements*	Minimum Entry and/or Application Requirements	Application Assessment Criteria	Interview Assessment Criteria
LM123	BSC BIOLOGICAL & CHEMICAL SCIENCES Common entry with choice (subject to restriction) to pursue defined Degree Options in any of the following: <ul style="list-style-type: none"> • Pharmaceutical and Industrial Chemistry • Industrial Biochemistry • Environmental Science • Bioscience 	24	HC2 (H4) in Leaving Cert Maths or equivalent or Merit in QQI Maths for STEM (5S2246/5N0556) and HD3 / OD3 (O6/ H7) in either Physics, Chemistry, Physics with Chemistry, Engineering, Agricultural Science or Biology OR OB3 (O3/H7) in Leaving Cert Maths or equivalent or Pass in QQI Maths for STEM (5S2246/5N0556) with HC2 (H4) in one of the following: Applied Maths, Physics, Chemistry, Physics with Chemistry, Biology or Agricultural Science OR Significant work experience with direct connection with Pharmaceutical and Industrial Chemistry or equivalent OR Relevant QQI or other applicable courses. Applicants will need to submit supporting evidence.	It must be clear from the application form and personal statement that the applicant has a real interest in the course and has demonstrable background in a chemistry related field either through study or work experience. Students should include these details in their CAO application "Statement of Interest". Guide questions for the application are given on the mature student website under "Entry requirements".	Students may not be called for interview, but should be prepared to discuss the following if they are: <ul style="list-style-type: none"> • Interest in programme • Aptitude for programme • Numerical skills

*Guideline only. These figures may differ slightly for 2025 as they are calculated from the total number of places available on a programme in any year. However, not all mature student places may be filled, as it depends on the number and quality of applications received in any year.

Science & Engineering

2025 Entry

Code	Programme / Group Of Programmes	Entry Requirements*	Minimum Entry and/or Application Requirements	Application Assessment Criteria	Interview Assessment Criteria
LM124	BSC MATHEMATICS Common entry with choice to pursue defined Degree Options in any of the following: <ul style="list-style-type: none"> • Mathematical Sciences • Mathematics & Physics • Economics & Mathematics 	6	HB3 (H3) in Leaving Certificate Maths or equivalent or Distinction in QQI Maths for STEM (5S2246/5N0556) or Pass in UL Special Maths exam	Students should post "LM124 Application Statement" to the CAO in Galway with their supporting documents. The application statement should be no more than 550 words and include: <ul style="list-style-type: none"> • Demonstrated mathematical ability • Prior education • Relevant work experience • Understanding of course and preparations taken for third level studies • Interest in programme 	Places normally awarded on basis of application alone. An interview may be requested if deemed helpful to the assessment of the application.
LM125	BSC PHYSICS Common entry with choice to pursue defined Degree Options in any of the following: <ul style="list-style-type: none"> • Applied Physics • Mathematics & Physics 	3	HC2 (H4) in Leaving Certificate Maths or equivalent or Merit in QQI Maths for STEM (5S2246/5N0556) or Pass in UL Special Maths exam AND HC2 (H4) in Leaving Certificate in any one of the following: Physics, Physics with Chemistry, Engineering, Applied Mathematics or equivalent	Students should post "LM125 Application Statement" to the CAO in Galway with their supporting documents. The application statement should be no more than 550 words and include: <ul style="list-style-type: none"> • Demonstrated mathematics and physics ability • Prior education • Relevant work experience • Details of your areas of interest and preparations you have made for your prospective studies. • Interest in programme 	Places normally awarded on basis of application alone. An interview may be requested if deemed helpful to the assessment of the application.

*Guideline only. These figures may differ slightly for 2025 as they are calculated from the total number of places available on a programme in any year. However, not all mature student places may be filled, as it depends on the number and quality of applications received in any year.

Science & Engineering

2025 Entry

Code	Programme / Group Of Programmes	Entry Requirements*	Minimum Entry and/or Application Requirements	Application Assessment Criteria	Interview Assessment Criteria
LM126		New course	Minimum H4 in Mathematics; 06/ H7 in any one of the following: Physics, Chemistry, Physics with Chemistry, Engineering, Construction Studies, Design & Communication Graphics/ Technical Drawing, Technology, Biology, Agricultural Science, Applied Maths. Relevant studies/ experience may be considered- please contact the course director or mature student office for further information.	Applicants should submit "LM126 Application Statement" to the CAO offices in Galway. Your statement should include: details of relevant studies in related subjects; motivation for studies; understanding of commitment required for studies;	
LM173	INTEGRATED BSC/MSC IMMERSIVE SOFTWARE ENGINEERING (ISE)	4	H4 or equivalent in the Special Mathematics Examination offered at UL or Merit in QQI Maths for STEM (5S2246/5N0556) through provided link. Applicants will be emailed after submission deadlines with information on submitting your portfolio. Further information is available online. Submission of a Written Statement through provided link. Applicants will be emailed after submission deadlines with information on submitting your portfolio. Further information is available online.	Portfolio Assessment Criteria <ul style="list-style-type: none"> • Creativity from any domain • Supporting documentation should describe the path from concept to design to construction including critic of the work Written Statement <ul style="list-style-type: none"> • Illustrate potential to be successful and thrive in this course • The non-negotiables for the course are: curiosity, an open mind to technology, innovation, entrepreneurship, organisation and communication • Working in teams to solve real relevant problems 	Interviews may be conducted if deemed helpful to the assessment of the application.
LM175	BACHELOR OF SCIENCE IN IMMERSIVE BIOSCIENCE AND BIOTHERAPEUTICS	New Course	Enrolling in 2026.	Information available in 2025	Information available in 2025

*Guideline only. These figures may differ slightly for 2025 as they are calculated from the total number of places available on a programme in any year. However, not all mature student places may be filled, as it depends on the number and quality of applications received in any year.

Arts, Humanities & Social Sciences

2025 Entry

Code	Programme / Group Of Programmes	Entry Requirements*	Minimum Entry and/or Application Requirements	Application Assessment Criteria	Interview Assessment Criteria
LM002	ARTS	68	Applicants who wish to study a language must hold a minimum HC2 (H4) Leaving Certificate or equivalent in that language, unless taking beginners German or Spanish.	In your CAO Statement of interest, please include: <ul style="list-style-type: none"> • Answers to questions listed in mature student requirements online. • Details of past studies • Relevant work/ voluntary experience • Evidence of preparation for studies • Details of motivations including goals for future. 	<ul style="list-style-type: none"> • Prior education • Work experience • Evidence of interest • General suitability
LM019	BSC SOCIAL SCIENCES	6	N/A	In your CAO Statement of interest, please include: <ul style="list-style-type: none"> • Details of past studies • Relevant work/ voluntary experience • Evidence of preparation for studies • Details of motivations including goals for future. 	<ul style="list-style-type: none"> • Prior education • Work experience • Evidence of interest • General suitability
LM027	BACHELOR OF LAWS IN COMMON AND CIVIL LAW	New Course	CEFR Level B1 in French or evidence of equivalent	In your CAO Statement of interest, please include: <ul style="list-style-type: none"> • Answers to questions listed in mature student requirements online • Details of past studies • Relevant work/ voluntary experience • Evidence of preparation for studies • Details of motivations including goals for future. 	Students should be prepared to demonstrate their language ability and show how they have prepared for what the unique challenges of the course may be.
LM028	BA CRIMINAL JUSTICE	10	A tailored personal essay for LM028/LM029 should be posted to the CAO office in Galway with your additional documents.	<ul style="list-style-type: none"> • Prior Education • Work / voluntary experience • Evidence of interest in the programme • General suitability • IT skills 	<ul style="list-style-type: none"> • Prior education • Work / voluntary experience • Evidence of interest • General suitability
LM029	LLB LAW PLUS	8			
LM030	BACHELOR OF ARTS GLOBAL POLITICS	New course	Minimum H3 in chosen language other than English. Not required for students choosing beginner languages;	Students should answer questions given online for LM030 CAO "Statement of Interest"	Students should be prepared to demonstrate their language ability.
LM031	BACHELOR OF ARTS PROFESSIONAL PATHWAYS	New course	Minimum H4 in chosen language other than English. Not required for students choosing beginner languages;	Students should answer questions given online for LM031 CAO "Statement of Interest"	Students should be prepared to demonstrate their language ability.

*Guideline only. These figures may differ slightly for 2025 as they are calculated from the total number of places available on a programme in any year. However, not all mature student places may be filled, as it depends on the number and quality of applications received in any year.

Arts, Humanities & Social Sciences

2025 Entry

Code	Programme / Group Of Programmes	Entry Requirements*	Minimum Entry and/or Application Requirements	Application Assessment Criteria	Interview Assessment Criteria
LM039	BA JOURNALISM AND DIGITAL COMMUNICATION	4	N/A	<p>"LM039 Application Statement" should be submitted to the CAO office in Galway. Your statement should include: Short personal introduction; Why you want to study this course; Relevant work or volunteering experience; What preparation you have done for this course.</p>	<ul style="list-style-type: none"> • Prior education • Work experience / journalism • Evidence of interest • General suitability
LM040	BA EUROPEAN STUDIES	3	Applicants who wish to study a language must hold a minimum HB3 (H3) Leaving Certificate or equivalent in that language, unless taking beginners German or Spanish.	<p>Students should post "Application Statement for LM040" to the CAO in Galway with their additional documents. Students should include: Relevant work or volunteering experience; Prior studies; Understanding of programme and what made you choose this particular course; Experience living in a country which speaks your chosen language.</p>	<ul style="list-style-type: none"> • Personal information and background • Motivation for undertaking the programme • Knowledge of the programme and possible related careers • Relevant life / work experience • Ability to engage with 3rd level learning styles and approaches • Communication skills • Awareness of European issues
LM044	BA APPLIED LANGUAGES	7	Evidence of sufficient ability to study languages successfully at university level (e.g. HB3 (H3) Leaving Certificate in relevant language or recognised equivalent) Prior language study, overseas experience, language courses taken.	<ul style="list-style-type: none"> • Prior education <p>In your CAO Statement of interest, please include:</p> <ul style="list-style-type: none"> • Answers to questions listed in mature student requirements online. • Details of past studies in languages • Relevant work/ voluntary experience outside of home country • Evidence of preparation for studies • Details of motivations including goals for future. 	<ul style="list-style-type: none"> • Ability to speak and understand the language the applicant wishes to take at advanced level • Other relevant courses completed • Experience living outside his / her home country • Motivation • Willingness to engage with the course, including the compulsory aspect of Erasmus exchange programme • Assessment of applicant's knowledge of the society and culture of the target language

*Guideline only. These figures may differ slightly for 2025 as they are calculated from the total number of places available on a programme in any year. However, not all mature student places may be filled, as it depends on the number and quality of applications received in any year.

Kemmy Business School

2025 Entry

Code	Programme / Group Of Programmes	Entry Requirements*	Minimum Entry and/or Application Requirements	Application Assessment Criteria	Interview Assessment Criteria
LM020	BA LAW & ACCOUNTING	11	Tailored personal essay for LM020/ LM056/ LM050 should be posted to the CAO office in Galway with other supporting documentation.	<ul style="list-style-type: none"> Recognised prior learning - educational qualifications (LC, relevant QQI/HETAC qualifications), IT skills, other qualifications Personal statement - should demonstrate an understanding of the nature of the programme to which you are applying Relevant work experience (voluntary or paid) Aptitude for numeracy Overall application quality 	<ul style="list-style-type: none"> Non-English languages skills for Business Studies with a language Relevant knowledge, education and experience Knowledge of programme Preparedness for third level and ability to cope with academic workload Communication skills
LM056	BA INTERNATIONAL BUSINESS	8			
LM050	BACHELOR OF BUSINESS STUDIES (including Business Studies with French or German or Japanese)	61	<p>For Business Studies with a language:</p> <p>High level of proficiency in French (HC2 (H4) Leaving Cert or recognised equivalent)</p> <p>OR</p> <p>High level of proficiency in German (HC2 (H4) Leaving Cert or recognised equivalent)</p> <p>OR</p> <p>High level of proficiency in a language other than English (HC2 (H4) Leaving Cert or recognised equivalent)</p>		

*Guideline only. These figures may differ slightly for 2025 as they are calculated from the total number of places available on a programme in any year. However, not all mature student places may be filled, as it depends on the number and quality of applications received in any year.

Irish World Academy of Music + Dance

2025 Entry

Code	Programme / Group Of Programmes	Entry Requirements*	Minimum Entry and/or Application Requirements	Application Assessment Criteria	Interview Assessment Criteria
LM131	BACHELOR OF ARTS IN IRISH MUSIC	No Limit	<p>Knowledge and skill in Irish Traditional music. Formal education not necessary, but some experience of performing is needed. All students must undergo a Garda Vetting process</p> <p>Students can also join second year of this course following the Certificate in Music and Dance.</p> <p>For details of QQI requirement please check the QQI Booklet. All students must undergo Garda Vetting.</p>	<p>Applicants should submit "LM131 Application Statement" to the CAO in Galway. Students should include: Why they have chosen this course; How they have prepared for their studies; understanding of commitment required for this course</p>	<ul style="list-style-type: none"> • Auditions can be held in person or online upon request. • Applicants will be asked to prepare three sets of tunes / pieces (at least one set needs to be a set of reels) or, if they are traditional singers, three songs. • A short interview will follow. <p>Further information can be found on www.irishworldacademy.ie/undergraduate/ba-irish-music/.</p>
LM132	BACHELOR OF ARTS IN IRISH DANCE	No Limit	<p>Knowledge and skill in Irish dance. Formal education not necessary, but some experience of performing is needed. All EU/ Irish residential applicants must apply through the CAO.</p> <p>Students can also join second year of this course following the Certificate in Music and Dance.</p> <p>For details of QQI requirement please check the QQI Booklet. All students must undergo Garda Vetting.</p>	<p>Applicants should submit "LM132 Application Statement" to the CAO in Galway. Students should include: Why they have chosen this course; How they have prepared for their studies; understanding of commitment required for this course</p>	<ul style="list-style-type: none"> • Students must perform three dances on video or in person. Applicants who are unable to attend a face to face audition should contact the course director about submitting a recorded audition. • We require our traditional dancers to perform either: • Competitive style: 3 pieces, one hard-shoe, one soft-shoe and one of own choice in any style • or • Sean-nós: 3 pieces – one reel time percussive piece, one percussive piece in another rhythm, one of own choice in any style. • A short interview will follow. <p>Further information can be found on www.irishworldacademy.ie/undergraduate/ba-irish-dance/.</p>

*Guideline only. These figures may differ slightly for 2025 as they are calculated from the total number of places available on a programme in any year. However, not all mature student places may be filled, as it depends on the number and quality of applications received in any year.

Irish World Academy of Music + Dance

2025 Entry

Code	Programme / Group Of Programmes	Entry Requirements*	Minimum Entry and/or Application Requirements	Application Assessment Criteria	Interview Assessment Criteria
LM133	BACHELOR OF ARTS IN CONTEMPORARY DANCE	No Limit	<p>Knowledge and skill in dance. Formal education not necessary, but some experience of performing is needed. All EU/ Irish residential applicants must apply through the CAO. Students can also join second year of this course following the Certificate in Music and Dance.</p> <p>For details of QQI requirement please check the QQI Booklet. All students must undergo Garda Vetting.</p>	<p>Applicants should submit "LM133 Application Statement" to the CAO in Galway. Students should include: Why they have chosen this course; How they have prepared for their studies; understanding of commitment required for this course</p>	<ul style="list-style-type: none"> • Applicants who are unable to attend a face to face audition should contact the course director about submitting a recorded audition. A maximum of three-minute dance solo in any movement style/genre. E.g. ballet, hip-hop, contemporary. • Dance technique level. • Ability to execute the choreography performed in solo. • Performance quality (Focus and intention to detail of movement). • Musicality • A short interview will follow. <p>Further information can be found on www.irishworldacademy.ie/undergraduate/ba-contemporary-dance/.</p>
LM134	BACHELOR OF ARTS IN VOICE	No Limit	<p>Knowledge and skill in vocal performance. Formal education not necessary, but some experience of performing is needed. Students can also join second year of this course following the Certificate in Music and Dance.</p> <p>For details of QQI requirement please check the QQI Booklet. All students must undergo Garda Vetting.</p>	<p>Applicants should submit "LM134 Application Statement" to the CAO in Galway. Students should include: Why they have chosen this course; How they have prepared for their studies; understanding of commitment required for this course</p>	<ul style="list-style-type: none"> • Perform two contrasting songs. • Songs may be in any style/genre. • Accompaniment: applicants may use backing tracks, self-accompany, bring an accompanist, or sing without accompaniment. • The performance will be assessed on technical skill, vocal ability and overall performance. • Applicants who are unable to attend a face to face audition should contact the course director about submitting a recorded audition. • A short interview will follow. <p>Further information can be found on www.irishworldacademy.ie/undergraduate/ba-voice/.</p>

*Guideline only. These figures may differ slightly for 2025 as they are calculated from the total number of places available on a programme in any year. However, not all mature student places may be filled, as it depends on the number and quality of applications received in any year.

Irish World Academy of Music + Dance

2025 Entry



Code	Programme / Group Of Programmes	Entry Requirements*	Minimum Entry and/or Application Requirements	Application Assessment Criteria	Interview Assessment Criteria
LM135	BACHELOR OF ARTS IN WORLD MUSIC	No Limit	<p>Knowledge and skill in musical performance. Formal education not necessary, but some experience of performing is needed. All EU/ Irish residential applicants must apply through the CAO. Students can also join second year of this course following the Certificate in Music and Dance.</p> <p>For details of QQI requirement please check the QQI Booklet. All students must undergo Garda Vetting.</p>	<p>Applicants should submit "LM135 Application Statement" to the CAO in Galway. Students should include: Why they have chosen this course; How they have prepared for their studies; understanding of commitment required for this course</p>	<ul style="list-style-type: none"> • Play / sing two pieces of your own choosing in any style or genre • Applicants who are unable to attend a face to face audition should contact the course director about submitting a recorded audition. • Performances are assessed based on proficiency on instrument, musicality, performance quality and creativity and motivation. • Your performance will be assessed by a panel and a short interview will follow. <p>Further information can be found on www.irishworldacademy.ie/undergraduate/ba-world-music/.</p>
	CERTIFICATE IN MUSIC AND DANCE	No Limit	<p>Those applying to study on the Certificate in Music and Dance must do so directly to the University, not through the CAO.</p> <p>Contact admissions (admissions@ul.ie).</p>	<p>Music and / or dance experience in at least one area is required.</p>	<ul style="list-style-type: none"> • An interview/audition is arranged for each applicant. This must be passed to gain entry onto the course. <p>Further information can be found on www.irishworldacademy.ie/undergraduate/certificate-in-music-and-dance/.</p>

*Guideline only. These figures may differ slightly for 2025 as they are calculated from the total number of places available on a programme in any year. However, not all mature student places may be filled, as it depends on the number and quality of applications received in any year.

Learning + Support Services in UL

There is a very comprehensive range of learning support and other services in UL, which are available to all students. The following is not a comprehensive list of supports and services, but rather highlights those which might be of most interest and relevance to mature students. Further information on each support service can be obtained from the websites listed below or by contacting the service directly using the email address provided.

Student Affairs Division

		
ACCESSCAMPUS	donal.oleary@ul.ie	www.ul.ie/studentaffairs/accesscampus
ACCESS OFFICE	access@ul.ie	www.ul.ie/access
STUDENT SUPPORT AND ENGAGEMENT OFFICERS	seso@ul.ie	www.ul.ie/student-affairs/seso/student-engagement-success-officers
CHAPLAINCY	John.campion@ul.ie / sarah.orourke@ul.ie	www.ul.ie/chaplain
COMMUNITY LIAISON OFFICE / PRESIDENT'S VOLUNTEER AWARD	pva@ul.ie	www.studentvolunteer.ie/UL
DISABILITY SUPPORT SERVICES	disabilityservices@ul.ie	www.ul.ie/disabilityservices
ÉIST STUDENT COUNSELLING AND WELLBEING	counselling@ul.ie	www.ul.ie/counselling
MATURE STUDENT OFFICE	maturestudentoffice@ul.ie	www.ul.ie/student-affairs/mature-students-office
STUDENT HEALTH CENTRE	Ria.toland@ul.ie	www.ul.ie/medical

Centre For Teaching And Learning - Learning Support Centres & Initiatives

		
CENTRE FOR TEACHING AND LEARNING	ctl@ul.ie	www.ul.ie/ctl
FIRST SEVEN WEEKS		www.ul.ie/ctl/students/first-seven-weeks
ICT LEARNING CENTRE	Clem.odonnell@ul.ie	www.ul.ie/ictlc
LANGUAGE CENTRE	Language.centre@ul.ie	www.ul.ie/languagecentre
MATHEMATICS LEARNING CENTRE	mlc@ul.ie	www.ulsites.ul.ie/mlc/
REGIONAL PEER SUPPORTED LEARNING CENTRE	James.murphy@ul.ie	www.pslc.ul.ie/pslc/
REGIONAL WRITING CENTRE	writingcentre@ul.ie	www.ul.ie/rwc
SCIENCE LEARNING CENTRE	Claire.obrien@ul.ie / slc@ul.ie	www.ul.ie/~slc

Other Services

	✉	.COM
ACCOMMODATION OFFICE	accommodation@ul.ie	www.studentliving.ul.ie
GRADUATE AND PROFESSIONAL STUDIES	postgradadmissions@ul.ie gps@ul.ie (Professional / Flexible)	www.ul.ie/gps/
COOPERATIVE EDUCATION AND CAREERS DIVISION	careers@ul.ie	https://www.ul.ie/cecd/
FEES OFFICE	Student.fees.office@ul.ie	www.ulsites.ul.ie/finance/ student-fees
SILVER APPLES CRECHE	silverapplescreche@ul.ie	
ACADEMIC REGISTRY		www.ul.ie/academic-registry/
STUDENT LIFE (STUDENTS' UNION)	studentcentre@ul.ie	www.ulstudentlife.ie



Mature Student Profiles

Tracey Keogh

PhD in Psychological Research

Having children at a young age can bring many challenges and requires many sacrifices. One of which was to postpone my desire to progress to 3rd level education. I have always believed that the best lesson I could teach my children would come through leading by example.



So, when my children became teenagers where they themselves were considering what next in terms of their education, I decided to take the leap and return to education myself. I knew I wanted to apply for a BSc in psychology but being out of education for many years meant that I needed to upskill in order for this to happen. So, I completed a general studies course and a FETAC level 5 in 2014 and nervously made an application through the CAO system.

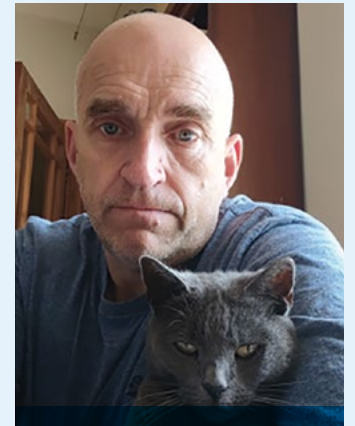
I remember receiving my place on the course as though it were yesterday. It truly was one of the best days of my life. I promised myself that I would make the most of the university experience. I truly can't believe that I continue to hold true to that promise. As an undergraduate student, I applied through the mature student office for a national scholarship to spend the summer of 2017 teaching in Vietnam. Through the amazing support of the staff in the office, I won the award and was immersed in a truly amazing cultural experience. I had the academic bug at that point and decided to progress to PhD in 2018. As I write this, I am currently on a 2-week research trip to Baylor University in Texas, after spending a week in California where I presented the findings of my 3rd PhD study at a conference. These opportunities arose from being a student in UL.

My advice to those considering taking the leap is go for it. It is hands down one of the best decisions I have made. It can have its challenges but don't allow fear to deter you from following your dreams. It is normal to feel anxious about the unknown. but there are so many supports in UL, with the best starting point being the Mature Student Office.

Tony Cleary

Sport and Exercise Sciences

I left school with nothing at 16, worked in an array of different jobs until my passion for golf became a quest to become my career also. Life stepped in to firmly put that on the back burner. Married with two children (whom are both in UL as I write this) I became my fathers-in-law carer for what turned out to be 13 years.

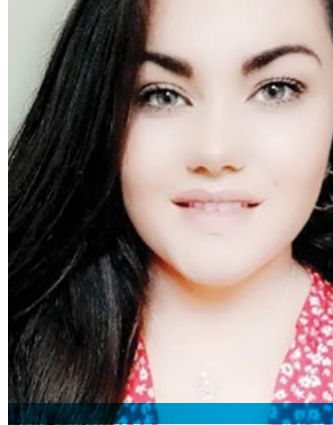


At 50 I decided it was time to re-ignite my passion to be a professional golfer. Physicality stepped into the breach this time. An unexpected hip replacement. Feeling 20 years younger after the operation and with no real work plan, I decided that education was my calling. It was an interest in my sport and the physical turmoil that I had been through, that gave me the idea that I could improve myself with knowledge. So, with a slew of standard minimum wage jobs under my belt and before me in my immediate future, I decided that the university life and a degree was the next step. I applied for a psychiatric nursing course, I panicked then I missed the entrance exam. This I took as a sign to get back on track with my passion, so I looked again and decided to get back on track, therefore the Sports and exercise science degree course was the only option. With this course I had to complete the Mature Students Admissions Pathway (MSAP) test. Daunting, but I passed and got a place.

It would have made my first two years so much easier if I had completed an access course. I'm computer literate but it's the advanced usability of the office programs that you learn which saves the time and pain. The semantics and all the peripheral learning (referencing, library searching etc.) that I had to employ just to complete the modules, made the first year much harder than it should have been. Covid also didn't help, we were the most affected as we started on campus then go online. Having to learn all the new delivery methods and getting tech to behave was a nightmare at times. Managing my time was also very hard. I did not use many of the supports UL offers in first year much, I thought that they were not for the likes of me, how wrong was I, they are second to none and for everyone. I struggled with physics so availed of the science learning centre after classes, it made all the difference. It seems lame to say that being a part of UL is like a family, but like a family everyone is out to help you, and no-one gives their time to you like a family does. Everyone's life experiences and situations are different. You can guarantee that there is, or has been someone with your type of problem, and therefore a person or resource to help you find a solution. So far UL has been a privilege to be a part of and I cannot believe I will be going into my final year in 2024. The campus itself is a gift to walk around and relax in, so spend time being there and enjoy.

Amy Ryan

BSc Nursing (Mental Health)



I never thought I would be lucky enough to find myself studying mental health nursing. Previously, an education in a higher-level institute was not on the cards for me. I enjoyed the creative side of school growing up, the art classes, the music classes and singing. Academically, it was not me. However, when I became a mother at 24 (to the most beautiful boy), my perspective changed in life and I knew that in order to secure a brighter, better, and safer future, I needed to put my education first. I put that trust in the University of Limerick (UL).

I applied to UL through the Mature Student route as an applicant on the CAO. I undertook an aptitude test and my score qualified me a place on LM152, BSc Nursing (Mental Health). I cannot begin to describe the sense of pride and achievement I felt as I watched numerous offers come through my screen. This was a dream come true.

If finances are a worry for you, then hopefully I will ease this worry. The University of Limerick offers ample information on grants, funds and bursaries that are made available to you. I have personally benefitted from SUSI, The 1916 Bursary and the Student Assistance Fund. I am a single parent (Lone Parent) and without a doubt, the University of Limerick champions the student. Without this funding, my education would truly not be possible. I am forever grateful to the mature student office who have been extremely helpful and a great support network for mature students like me who can feel a little overwhelmed at times. I know that I will continuously avail of their assistance throughout my degree programme.

Within the University of Limerick, there are incredibly insightful lecturers that have an abundance of experience and knowledge. They are always willing to engage with their students and assist in any way they can. If you are willing to commit to your studies, then you will reap the rewards.

My advice, grab every educational opportunity with both hands and do not let go. Education is powerful.



supporting access
to higher education
for adults

Top Tips from UL Mature Students





Rannóg Ghnóthaí
Mac Léinn

Student Affairs
Division

Mature Student Office
Room EM019a
Main Building
University of Limerick
Limerick, Ireland



+353 61 202 735



mso@ul.ie



www.ul.ie/mso



@MSO_UL