



UNIVERSITY OF  
**LIMERICK**  
OLLSCOIL LUIMNIGH

# QQI Information Booklet 2025

# QQI FET Entry

## General

The University of Limerick has entry routes to first year of undergraduate degree courses for students who have achieved the relevant QQI Level 5 award. Candidates will be ranked on the basis of their performance in that award.

## Application Process

All applications for admission under the QQI entry pathway must be made through the Central Applications Office (CAO).

## Minimum Entry Requirements

Certain QQI Level 5 major awards are acceptable in fulfilling the admission requirements for each course of study. In all circumstances candidates must present the full award with a minimum credit value of 120 which must include a distinction in at least 5 component awards.

In addition to satisfying the minimum entry requirements, candidates must also satisfy the specific component award requirements as outlined below.

## Scoring Process

This scoring process only applies where all the requirements for the major award are met (i.e. when the specified component awards have been achieved to a minimum of 120 credits). Each component is given a score based on the credit value of the component and the weighting of the grade achieved.

Although most component awards have a credit value of 15, credit values of 5, 10, 20 and 30 also apply.

The following grade weightings apply:

- 1 for a pass
- 2 for a merit
- 3 for a distinction

To calculate a component score:

- Multiply the credit value of the component by the weighting for the grade achieved.
- Add all of the component scores up to a cumulative credit value of 120. When adding up these scores begin with distinctions, then merits, then passes.
- Multiply the total by 13 and divide by 12.

Components leading to the best 120 credits are scored and applicants are ranked accordingly. The best 120 credits come from component awards achieved with the highest grades. Some applicants will combine components achieved prior to the introduction of CAS with others which are part of CAS.

Examples of the scoring scheme are available on [www.cao.ie](http://www.cao.ie).

## Graduates of QQI HET Higher Certificate

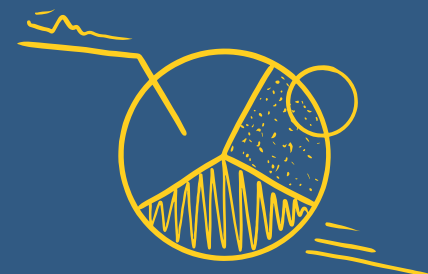
Applications are invited from graduates of the following who wish to pursue a compatible full-time Honours Degree course (Level 8) at UL:

- QQI HET Higher Certificate, NFQ Level 6 Major Award
- QQI HET Bachelor (Ordinary Degree), NFQ Level 7 Major Award and Level 6 QQI (FET)

Transfers are accepted into most of our courses. However, a number of our courses do not accept transfer applications due to the structure of the course. E.g. Education / Nursing.

Prior to submitting an application students are advised to discuss their options with the Head of the relevant School/Department of the course they wish to transfer to.

**NOTE:** The contents of this Annual Course Guide are for information purposes only and should not be viewed as the basis of a contract between a student and the University. All information is correct at the time of print. No guarantee is given that courses, syllabuses, awards, fees, event dates or regulations may not be altered, cancelled, or otherwise amended at any time.





UNIVERSITY  
LIMERICK

# QQI Pathways

## Course

### Arts LM002

#### Specific Entry Requirements

Must possess 5 distinctions

No specific essential modules/components are required

Except for students wishing to pursue a language option are required to present a distinction in the relevant language component/module or H4 in LCE in the appropriate language.

#### Essential Level 5/6 Major Award

- Any

#### Essential Modules/Components:

- N/A

## Course

### Social Sciences LM019

#### Specific Entry Requirements

Must possess 5 distinctions

No specific essential modules/components are required

#### Essential Level 5/6 Major Award

- Any

#### Essential Modules/Components:

- N/A

## Course

### Criminal Justice LM028

#### Specific Entry Requirements

Must possess 5 distinctions (80% or better)

No specific essential modules/components are required so long as the student has obtained the award with a minimum of 5 distinctions.

For certain electives additional special qualifications specific to individual subjects or disciplines may be determined by the respective departments in accordance with Academic Council Regulations

#### Essential Level 5/6 Major Award

- 5M2073 Language and European Studies
- 5M2102 Business Studies
- 5M2111 International Trade
- 5M2154 Cultural and Heritage Studies

- 5M2181 Applied Social Studies
- 5M2464 Journalism
- 5M3789 Legal Studies
- 5M5165 Trade Union Studies

#### Essential Modules/Components:

- N/A

## Course

### Law Plus LM029

#### Specific Entry Requirements

Must possess 5 distinctions (80% or better)

No specific essential modules/components are required so long as the student has obtained the award with a minimum of 5 distinctions.

For certain electives additional special qualifications specific to individual subjects or disciplines may be determined by the respective departments in accordance with Academic Council Regulations

#### Essential Level 5/6 Major Award

- 5M2073 Language and European Studies
- 5M2102 Business Studies
- 5M2111 International Trade
- 5M2154 Cultural and Heritage Studies
- 5M2181 Applied Social Studies
- 5M2464 Journalism
- 5M3789 Legal Studies
- 5M5165 Trade Union Studies

#### Essential Modules/Components:

- N/A

## Course

### Psychology and Sociology LM038

#### Specific Entry Requirements

Must possess 5 distinctions which must include at least 3 essential modules/components.

#### Essential Level 5/6 Major Award

- DCHCC or 5M2786 Community Care
- DCHSC or 5M2009 Childcare
- DCHSN or 5M4349 Nursing Studies
- DCHSX or 5M4468 Community & Health Service
- DHSXX or 5M4339 Healthcare Support



**Essential Modules/Components:**

- D20005 or 5N1764 Child Development
- D20032 or 5N1279 Human Growth & Development
- G20003 or 5N2705 Care Provision & Practice
- G20031 or 5N1370 Social Studies
- G20034 or 5N1367 Teamworking

**Essential Level 5/6 Major Award**

- EASSX or 5M2181 Applied Social Studies

**Essential Modules/Components:**

- D20032 or 5N1279 Human Growth & Development
- G20031 or 5N1370 Social Studies
- G20034 or 5N1367 Teamworking
- L22541 or 5N0754

**Essential Level 5/6 Major Award**

- ELAXX or 5M3114 Liberal Arts

**Essential Modules/Components:**

- B20029 or 5N2066 Statistics
- G20031 or 5N1370 Social Studies
- L22312 Biology of Human Development
- L21910 or L22314 or L22541 or 5N0754 Psychology
- L22283 or 5N2985 Personal and Professional Development
- N22789 Applied Psychology

**Course**

**Journalism and Digital Communication LM039**

**Specific Entry Requirements**

Must possess 5 distinctions which must include at least 2 essential modules/components

**Essential Level 5/6 Major Award**

- EPJXX or 5M2464 Print Journalism

**Essential Modules/Components:**

- G20001 or 5N0690 Communications
- E20076 or 5N2443 Research Skills for Journalism
- E20077 or 5N2463 Technical Skills for Journalism
- E20078 or 5N2435 Writing for Journalism
- E20013 or 5N2152 Print Journalism

**Essential Level 5/6 Major Award**

- ERPXX or 5M4511 Radio Production

**Essential Modules/Components:**

- G20001 or 5N0690 Communications
- E20076 or 5N2443 Research Skills for Journalism
- E20013 or 5N2152 Print Journalism
- E20137 or 5N1379 Radio Course Production
- L21667 Broadcast Journalism
- L22282 News, Sport and Talk for Radio

**Essential Level 5/6 Major Award**

- EMPRO or 6M5130 Media Production

**Essential Modules/Components:**

- G20001 or 6N1950 Communications
- E20013 or 5N2152 Print Journalism
- N32736 News Writing for Print
- N32737 Feature Writing for Print
- N32738 Sub-editing for Print
- N32749 or 6N5450 Research Skills for Journalism
- N32755 or 6N5454 Radio News Broadcasting

**Essential Level 5/6 Major Award**

- EMMPX or 5M2146 Multimedia Production

**Essential Modules/Components:**

- G20001 or 6N1950 Communications
- E20008 or 5N1298 Media Analysis
- E20137 or 5N1379 Radio Course Production
- E20149 TV and Video Production
- E20151 Editing for TV and Film

**Essential Level 5/6 Major Award**

- EMPXX or 5M2073 Media Production

**Essential Modules/Components:**

- E20008 or 5N1298 Media Analysis
- E20078 or 5N2435 Writing for Journalism
- E20013 or 5N2152 Print Journalism
- E20076 or 5N2443 Research Skills for Journalism  
E20137 or 5N1379 Radio Course Production
- E20077 or 5N2463 Technical Skills for Journalism
- G20001 or 6N1950 Communications
- E20149 TV and Video Production

# QQI Pathways

## Course

### European Studies LM040

#### Specific Entry Requirements

Must possess 5 distinctions which must include at least 3 essential modules/components one of which must be a language

#### Essential Level 5/6 Major Award

- ELESX or 5M2073 Language and European Studies

#### Essential Modules/Components:

- E20106 or 5N1623 French
- E20107 or 5N1624 German
- E20108 or 5N1630 Spanish
- E20024 or 5N1444 European Studies
- G10036 or 4N3400 Cultural Studies
- G20001 or 5N0690 Communications
- G20022 or 5N1837 Political Studies

## Course

### Applied Languages LM044

#### Specific Entry Requirements

Must possess 5 distinctions which must include at least 3 essential modules/components one of which must be a language

#### Essential Level 5/6 Major Award

- ELESX or 5M2073 Language and European Studies

#### Essential Modules/Components:

- E20106 or 5N1623 French
- E20107 or 5N1624 German
- E20108 or 5N1630 Spanish
- E20110 or 5N1631 Irish
- E20024 or 5N1444 European Studies
- G20001 or 5N0690 Communications
- G10036 or 4N3400 Cultural Studies

## Course

### Business Studies (options) LM050

#### Specific Entry Requirements

Must possess 5 distinctions plus 1 essential module/component.

In circumstances where B20029/5N2066 Statistics or C20139/5N1833 Mathematics is not available or any

grade has not been achieved, a Grade O4 at Ordinary Level or a Grade H7 at Higher Level in Leaving Certificate Mathematics will also satisfy this requirement.

Students wishing to pursue a language option would be required to present a distinction in the relevant language component/module or the alternative Leaving Certificate H4 in the appropriate language.

Note this would have to be checked post entry as this grade in a language is not part of the minimum entry requirements.

#### Essential Level 5/6 Major Award

- Any

#### Essential Modules/Components:

Five distinctions, plus a minimum of a Merit in one of the following:

- B20029 or 5N2066 Statistics
- C20139 or 5N1833 Mathematics

## Course

### Financial Mathematics LM058

#### Specific Entry Requirements

Must possess 5 distinctions which must include at least 1 essential modules/components.

In circumstances where C20139 or 5N1833 Mathematics 5N0556 or 5S2246 Maths for STEM is not available or a distinction grade has not been achieved, a Grade H3 at Higher Level in Leaving Certificate Mathematics will also satisfy this requirement.

#### Essential Level 5/6 Major Award

- Any

#### Essential Modules/Components:

- C20139 or 5N1833 Mathematics
- 5N0556 or 5S2246 Maths for STEM

## Course

### Technology Management LM063

#### Specific Entry Requirements

Must possess 5 distinctions which must include at least 1 essential modules/components.

In addition students should have achieved a distinction in 5N1833 (Mathematics) OR 5N0556/5S2246 (Maths for STEM) OR have achieved an O3/H7 in LCE Mathematics.

#### Essential Level 5/6 Major Award

- 5M2061 Engineering Technology

**Essential Modules/Components:**

Two distinctions from the following:

- 5N1460 Physics
- 5N1606 Electronics
- 5N1638 Mechanics
- 5N2136 Engineering Workshop Theory

**Essential Level 5/6Major Award**

- 5M1940 Computer Aided Design

**Essential Modules/Components:**

A distinction in:

- 5N1929 Computer Illustrated Graphics

**Essential Level 5/6Major Award**

- 5M0536 Computer Systems And Networks

**Essential Modules/Components:**

Five distinctions to included three distinctions of the following:

- 5N0548 Computer Systems Hardware
- 5N2928 Operating Systems
- 5N2929 Networking Essentials
- 5N0554 Computational Methods and Problem Solving
- 5N18396 Maths for Information Technology

**Essential Level 5/6Major Award**

- 5M1995 Graphic Design

**Essential Modules/Components:**

Two distinctions from the following:

- 5N1978 Graphic Design Skill
- 5N1862 Drawing
- 5N0784 Design Skills

**Essential Level 5/6Major Award**

- 5M2145 Motor Technology

**Essential Modules/Components:**

Five distinctions to include three distinctions of the following:

- 5N1607 Engineering Drawing
- 5N1607 Engineering Drawing
- 5N1608 Engineering Workshop Processes
- 5N1637 Materials Science
- 5N1638 Mechanics

**Course****Environmental Science LM066****Specific Entry Requirements**

Must possess 5 distinctions which must include the following essential modules/components.

In addition students should have achieved a distinction in 5N1833 (Mathematics) OR 5N0556/5S2246 (Maths for STEM) OR have achieved an O3/H7 in LCE Mathematics.

**Essential Level 5/6Major Award**

5M3807 Laboratory Techniques

- Essential Level 5/6Major Award

**Essential Modules/Components:**

Five distinctions to include two distinctions of the following:

- 5N2751 Laboratory Skills
- 5N1460 Physics
- 5N2747 Chemistry
- 5N2746 Biology
- 5N0737 Microbiology
- 5N2748 Food Chemistry

**Essential Level 5/6Major Award**

- M5267 Food Science

**Essential Modules/Components:**

Five distinctions to include three distinctions of the following:

- 5N2751 Laboratory Skills
- 5N1460 Physics
- 5N2748 Food Chemistry
- 5N2747 Chemistry
- 5N2746 Biology
- 5N0737 Microbiology

**Essential Level 5/6Major Award**

- 5M5028 Applied Ecology

**Essential Modules/Components:**

Five distinctions which must include the following:

- 5N2528 Plant Science
- 5N2746 Biology

# QQI Pathways

## Course

### Aeronautical Engineering LM077

#### Specific Entry Requirements

Must possess 5 distinctions which must include the following essential modules/components.

In addition students should have achieved a distinction in 5N1833 (Mathematics) OR 5N0556/5S2246 (Maths for STEM) OR have achieved an H4 in LCE Mathematics.

#### Essential Level 5/6 Major Award

- 5M2061 Engineering Technology

#### Essential Modules/Components:

Five distinctions which must include the following:

- 5N1608 Engineer Workshop Process
- 5N1638 Mechanics

#### Essential Level 5/6 Major Award

- 5M2208 Design

#### Essential Modules/Components:

Five distinctions which must include the following:

- 5N1604 Computer Aided Draughting (2D)

#### Essential Level 5/6 Major Award

- 5M1940 Computer Aided Design

#### Essential Modules/Components:

Five distinctions to include two distinctions of the following:

- 5N1604 Computer Aided Draughting (2D)
- 5N1558 Architectural Drawing
- 5N1833 Mathematics

#### Essential Level 5/6 Major Award

- 5M3807 Laboratory Techniques

#### Essential Modules/Components:

Five distinctions to include one of the following:

- 5N1833 Mathematics
- 5N0556 Maths for STEM

#### Essential Level 5/6 Major Award

- 6M5154 Maintenance Skills Technology

#### Essential Modules/Components:

Five distinctions to include two distinctions of the following:

- 6N5372 Mechanical Maintenance Skills
- 6N5373 Plant Facilities Maintenance
- 6N5375 Industrial Pneumatic Systems

#### Essential Level 5/6 Major Award

- 5M2145 Motor Technology

#### Essential Modules/Components:

Five distinctions to include two distinctions of the following:

- 5N1607 Engineering Drawing
- 5N1607 Engineering Drawing
- 5N1608 Engineering Workshop Processes
- 5N1637 Materials Science
- 5N1638 Mechanics

## Course

### Construction Management and Engineering LM082

#### Specific Entry Requirements

Must possess 5 distinctions which must include the following essential modules/components

In addition students should have achieved a distinction in 5N1833 (Mathematics) OR 5N0556/5S2246 (Maths for STEM) OR have achieved an O3/H7 in LCE Mathematics.

#### Essential Level 5/6 Major Award

- 5M5010 Construction Technology

#### Essential Modules/Components:

Five distinctions to include three of the following:

- 5N1558 Architectural Drawing
- 5N1604 Computer Aided Draughting (2D)
- 5N1607 Engineering Drawing
- 5N1638 Mechanics
- 5N4974 Building Services
- 5N4976 Thermal Insulation Installation

#### Essential Level 5/6 Major Award

- 5M2061 Engineering Technology

#### Essential Modules/Components:

Five distinctions to include two of the following:

- 5N1570 Building Construction
- 5N1604 Computer Aided Draughting (2D)
- 5N1607 Engineering Drawing





### Essential Level 5/6 Major Award

- 5N1940 Computer Aided Design

#### Essential Modules/Components:

Five distinctions to include three of the following:

- 5N0784 Design Skills
- 5N1604 Computer Aided Draughting (2D)
- 5N1558 Architectural Drawing
- 5N1607 Engineering Drawing
- 5N1570 Building Construction Drawing
- 5N1929 Computer Illustrated Graphics

### Course

## Physical Education with concurrent Teacher Education LM090

#### Specific Entry Requirements

Must possess 5 distinctions which must include the following essential modules/components.

In addition students should have achieved a distinction in 5N1833 (Mathematics) OR 5N0556/5S2246 (Maths for STEM) OR have achieved an O6/H7 in LCE Mathematics.

For students wishing to pursue the English, Gaeilge, Geography or Mathematics options it is desirable that candidates present a H4 in LCE in the appropriate subject or an approved equivalent.

Please note that the following cannot be used – these are the work experience and work practice modules featured in the major awards (5N1356/6N1946/W20008/5N1433/6N1947).

### Essential Level 5/6 Major Award

- 5M5146 Sports, Recreation and Exercise

#### Essential Modules/Components:

Five distinctions to include three of the following:

- 5N4648 Sports Anatomy and Physiology
- 5N2668 Exercise and Fitness
- 5N2667 Sport and Recreation Studies
- 5N2006 Nutrition
- 5N4545 Kinesiology
- 5N4646 Adventure Activities

and in addition one of the following:

- 5N4885 Badminton Coaching
- 5N4886 Rugby Coaching
- 5N4887 Soccer Coaching
- 5N4888 Basketball Coaching

- 5N4889 Tennis Coaching
- 5N5085 Gaelic Football Coaching
- 5N5086 Hurling Coaching
- 5N5087 Volleyball Coaching

### Essential Level 5/6 Major Award

- 5M4468

#### Essential Modules/Components:

Five distinctions to include three of the following:

- 5N0749 Anatomy and Physiology
- 5N2668 Exercise and Fitness
- 5N2006 Nutrition
- 5N1279 Human Growth and Development
- 5N1764 Child Development
- 5N0754 Psychology
- 5N1273 Equality and Disability
- 5N1765 Child Health and Well Being
- 5N2746 Biology

### Essential Level 5/6 Major Award

- 6M5147

#### Essential Modules/Components:

Five distinctions to include three of the following:

- 6N4665 Sports Psychology
- 6N4651 Sports Nutrition
- 6N5345 Exercise and Fitness
- 6N2214 Health Promotion

and in addition one of the following:

- 6N4946 Trail Cycle Leader Instruction Skills
- 6N4967 Rugby Coaching
- 6N5189 Soccer Coaching
- 6N5190 Orienteering Instruction
- 6N5191 Powerboat Instruction
- 6N5192 River Kayaking Instruction
- 6N5193 Sea Kayaking Instruction
- 6N5346 Hurling Coaching
- 6N5347 Gaelic Football Coaching
- 6N5348 Sailing Instruction
- 6N5349 Open Canoeing Instruction
- 6N5350 Surfing Instruction
- 6N5365 Windsurfing Instruction

# QQI Pathways

## Course

### Languages with concurrent Teacher Education LM091

#### Specific Entry Requirements

Must possess 5 distinctions which must include at least 3 essential modules/components one of which must be a language.

Please note that the following cannot be used – these are the work experience and work practice modules featuring in the major award (5N1356/5N1433)

#### Essential Level 5/6 Major Award

- ELESX or 5M2073 Language and European Studies

#### Essential Modules/Components:

Five distinctions to include three of the following (one must be a language):

- E20106 or 5N1623 French
- E20107 or 5N1624 German
- E20108 or 5N1630 Spanish
- E20110 or 5N1631 Irish
- E20024 or 5N1444 European Studies
- G20001 or 5N0690 Communications
- G10036 or 4N3400 Cultural Studies

## Course

### Science with concurrent Teacher Education LM092

#### Specific Entry Requirements

Must possess 5 distinctions which must include the following essential modules/components.

In addition students should have achieved a distinction in 5N1833 (Mathematics) OR 5N0556/5S2246 (Maths for STEM) OR have achieved an O3/H7 in LCE Mathematics.

Please note that the following cannot be used – these are the work experience and work practice modules featuring in the major award (5N1356/5N1433).

#### Essential Level 5/6 Major Award

- 5M3807 Laboratory Techniques

#### Essential Modules/Components:

Five distinctions which must include

- 5N2751
- 5N2746

and in addition one of the following:

- 5N2747 Chemistry
- 5N1460 Physics

## Course

### Equine Science LM093

#### Specific Entry Requirements

Must possess 5 distinctions which must include the following essential modules/components.

In addition students should have achieved a distinction in 5N1833 (Mathematics) OR 5N0556/5S2246 (Maths for STEM) OR have achieved an F6/O6/H7 in LCE Mathematics.

#### Essential Level 5/6 Major Award

- 5M3807 Laboratory Techniques

#### Essential Modules/Components:

Five distinctions to include two of the following:

- 5N2751 Laboratory Skills
- 5N2747 Chemistry
- 5N2746 Biology
- 5N0737 Microbiology
- 5N0749 Anatomy and Physiology

#### Essential Level 5/6 Major Award

- 5M2768 Animal Care

#### Essential Modules/Components:

Five distinctions to include two of the following:

- 5N0750 Animal Anatomy and Physiology
- 5N0753 Animal Welfare
- 5N2746 Biology
- 5N1363 Veterinary Assisting Skills

#### Essential Level 5/6 Major Award

- 5M3371 Horsemanship

#### Essential Modules/Components:

Five distinctions to include two of the following:

- 5N3359 Sport Horse Riding
- 5N3360 Equine Anatomy and Physiology
- 5N3363 Equine Nutrition
- 5N1354 Bookkeeping Manual and Computerised

#### Essential Level 5/6 Major Award

- 6M5153 Animal Science

#### Essential Modules/Components:

Five distinctions to include two of the following:

- 6N5985 Veterinary Nursing Pharmacy
- 6N5926 Medical Veterinary Nursing



#### Essential Level 5/6 Major Award

- 6M3507 Equine Breeding

#### Essential Modules/Components:

Five distinctions to include:

- 5N1833 Mathematics
- 5N0556 Maths for STEM
- 6M3507 / 6M3505 (or F6/O6/H7 in LCE Maths)

#### Essential Level 5/6 Major Award

- 6M3505 Horsemanship

#### Essential Modules/Components:

Five distinctions to include:

- 5N1833 Mathematics
- 5N0556 Maths for STEM
- 6M3507 / 6M3505 (or F6/O6/H7 in LCE Maths)

#### Course

### Graphics and Construction Technology with concurrent Teacher Education LM094

#### Specific Entry Requirements

Must possess 5 distinctions which must include the following essential modules/components.

In addition students should have achieved a distinction in 5N1833 (Mathematics) OR 5N0556/5S2246 (Maths for STEM) OR have achieved an O3/H7 in LCE Mathematics.

Please note that the following cannot be used – these are the work experience and work practice modules featuring in the major award (5N1356/5N1433)

#### Essential Level 5/6 Major Award

- 5M5010 Construction Technology

#### Essential Modules/Components:

Five distinctions which must include one of the following:

- 5N1570 Building Construction
  - 5N1999 Wood Fabrication
- and in addition two of the following:
- 5N0784 Design Studies
  - 5N1604 Computer Aided Draughting
  - 5N1638 Mechanics
  - 5N4974 Building Services

#### Essential Level 5/6 Major Award

- 5M1981 Creative Craft

#### Essential Modules/Components:

Five distinctions which must include the following:

- 5N0784 Design Skills
- 5N1862 Drawing and in addition one of the following:
- 5N1275 Furniture Making
- 5N1359 Wood Turning
- 5N1360 Wood Finishing
- 5N1365 Veneering and Marketing

#### Essential Level 5/6 Major Award

- 5M1940 Computer Aided Design

#### Essential Modules/Components:

Five distinctions which must include the following:

- 5N0784 Design Skills
  - 5N1604 Computer Aided Draughting
- and in addition one of the following:
- 5N1558 Architectural Drawing
  - 5N1607 Engineering Drawing
  - 5N1570 Building Construction
  - 5N1637 Materials Science
  - 5N1862 Drawing

#### Essential Level 5/6 Major Award

- 6M4989 Architectural Technology and Design

#### Essential Modules/Components:

Five distinctions which must include two of the following:

- 6N3625 Architectural Drawing and Presentation
  - 6N3652 Computer Aided Draughting
  - 6N4909 Building Technology and Design
- and in addition one of the following:
- 6N3446 Design Skills
  - 6N4905 3D Design Materials
  - 6N4965 Critical Studies of Built Environment
  - 6N4969 Environmental Studies
  - 6N5965 Computer Aided Design 3D
  - 6N0732 Building Energy Rating Assessment

# QQI Pathways

## Course

### Graphics, Engineering and Technology with concurrent Teacher Education LM095

#### Specific Entry Requirements

Must possess distinctions in 5 Awards which must include the following essential modules/components.

In addition students should have achieved a distinction in 5N1833 (Mathematics) OR 5N0556/5S2246 (Maths for STEM) OR have achieved an O3/H7 in LCE Mathematics.

Please note that the following cannot be used – these are the work experience and work practice modules featuring in the major award (5N1356/5N1433)

#### Essential Level 5/6 Major Award

- 5M2061 Engineering Technology

#### Essential Modules/Components:

Five distinctions which must include the following:

- 5N1608 Engineering Workshop Process

and in addition two of the following:

- 5N0690 Communications
- 5N1607 Engineering Drawing
- 5N1637 Materials Science
- 5N2136 Engineering Workshop Theory
- 5N1437 Control Systems
- 5N1604 Computer Aided Draughting
- 5N1606 Electronics
- 5N1570 Building Construction

## Course

### Science with concurrent Teacher Education (Physical Sciences with Chemistry and Physics) LM096

#### Specific Entry Requirements

Must possess 5 distinctions which must include the following essential modules/components.

In addition students should have achieved a distinction in 5N1833 (Mathematics) OR 5N0556/5S2246 (Maths for STEM) OR have achieved an O3/H7 in LCE Mathematics.

Please note that the following cannot be used – these are the work experience and work practice modules featuring in the major award (5N1356/5N1433)

#### Essential Level 5/6 Major Award

- 5M3807 Laboratory Techniques

#### Essential Modules/Components:

Five distinctions which must include the following:

- 5N2751 Laboratory Skills
- 5N1460 Physics

and in addition two of the following:

- 5N2746 Biology
- 5N2747 Chemistry

## Course

### Mathematics and Computer Science with concurrent Teacher Education LM097

#### Specific Entry Requirements

Must possess 5 distinctions which must include the following essential modules/components.

In addition students should have achieved a distinction in 5N0556/5S2246 (Maths for STEM Level 5) OR have achieved a H4 in LCE Mathematics.

Please note that the following cannot be used – these are the work experience and work practice modules featuring in the major award (5N1356/5N1433)

#### Essential Level 5/6 Major Award

- 5M0529 Software Development
- 5M0536 Computer Systems and Networks
- 6M0695 Computer Systems and Networks

#### Essential Modules/Components:

Five distinctions which must include the following:

- 5N0556 Maths for STEM (Level 5)
- 6N3395 Mathematics (or H4 in LCE Maths)

## Course

### Psychology LM102

#### Specific Entry Requirements

Must possess 5 distinctions which must include at least 3 essential modules/components.

#### Essential Level 5/6 Major Award

- DCHCC or 5M2786 Community Care
- DCHSC or 5M2009 Childcare
- DCHSN or 5M4349 Nursing Studies
- DCHSX or 5M4468 Community & Health Service
- DHSXX or 5M4339 Healthcare Support

**Essential Modules/Components:**

- D20005 or 5N1764 Child Development
- D20032 or 5N1279 Human Growth & Development
- G20003 or 5N2705 Care Provision & Practice
- G20031 or 5N1370 Social Studies
- G20034 or 5N1367 Teamworking

**Essential Level 5/6 Major Award**

- EASSX or 5M2181 Applied Social Studies

**Essential Modules/Components:**

- D20032 or 5N1279 Human Growth & Development
- G20031 or 5N1370 Social Studies
- G20034 or 5N1367 Teamworking
- L22541 or N22789 Applied Psychology
- L22541 or 5N0754 Psychology

**Essential Level 5/6 Major Award**

- ELAXX or 5M3114 Liberal Arts

**Essential Modules/Components:**

- B20029 or 5N2066 Statistics
- G20031 or 5N1370 Social Studies
- L22312 Biology of Human Development
- L21910 or L22314 or L22541 or 5N0754 Psychology
- L22283 or 5N2985 Personal and Professional Development
- N22789 Applied Psychology

**Course****Paramedic Studies (Full B/Provisional C1 Driving Licence) LM103****Specific Entry Requirements**

Must possess 5 distinctions which must include at least 3 essential modules/components.

In addition students should have achieved a distinction in 5N1833 (Mathematics) OR 5N0556/5S2246 (Maths for STEM) OR have achieved a O6/H7 in LCE Mathematics

Please note in addition to the minimum entry requirements outlined above applicants must provide evidence of a Valid Full Clean B and either a Provisional C1 or Full Clean C1 Licence, prior to offer of a place on the course. Applicants must produce a Valid Full Clean C1 Licence by the end of Year 1 of the course

**Essential Level 5/6 Major Award**

- 5M4339 Healthcare Support
- 5M4468 Community Health Services
- 5M3782 Health Service Skills
- 5M4349 Nursing Studies
- 5M4732 Youth Work
- 5M2181 Applied Social Studies

**Essential Modules/Components:**

Five distinctions

**Course****Exercise & Health Fitness Management LM105****Specific Entry Requirements**

Must possess distinctions in 5 Awards

No specific essential modules/components are required

**Essential Level 5/6 Major Award**

- 5M5146 Sports, Recreation and Exercise
- 6M5147 Sports, Recreation and Exercise
- 5M3807 Laboratory Techniques
- 5M4468 Community Health Services

**Essential Modules/Components:**

N/A

**Course****Chemical and Biochemical Engineering LM115****Specific Entry Requirements**

Must possess 5 distinctions which must include at least 2 essential modules/components.

In addition students should have achieved a distinction in 5N1833 (Mathematics) OR 5N0556/5S2246 (Maths for STEM) OR have achieved an H4 in LCE Mathematics.

**Essential Level 5/6 Major Award**

- 5M3807 Laboratory Techniques

**Essential Modules/Components:**

Five distinctions which must include two of the following:

- 5N1460 Physics
- 5N2746 Biology
- 5N2747 Chemistry
- 5N2748 Food Chemistry

# QQI Pathways

## Essential Level 5/6 Major Award

- 5M5267 Food Science

### Essential Modules/Components:

Five distinctions which must include two of the following:

- 5N0737 Microbiology
- 5N2748 Food Chemistry
- 5N5245 Food Processing
- 5N1460 Physics
- 5N2747 Chemistry
- 5N2751 Laboratory Skills

## Course

### Engineering (Biomedical or Civil or Design & Manufacture or Mechanical) LM116

#### Specific Entry Requirements

Must possess 5 distinctions which must include at least 2 essential modules/components.

In addition students should have achieved a distinction in 5N1833 (Mathematics) OR 5N0556/5S2246 (Maths for STEM) OR have achieved an H4 in LCE Mathematics.

## Essential Level 5/6 Major Award

- 5M2061 Engineering Technology

### Essential Modules/Components:

Five distinctions which must include two of the following:

- 5N1608 Engineer Workshop Process
- 5N1638 Mechanics

## Essential Level 5/6 Major Award

- 5M1940 Computer Aided Design

### Essential Modules/Components:

Five distinctions which must include two of the following:

- 5N1604 Computer Aided Draughting (2D)
- 5N1558 Architectural Drawing
- 5N1929 Computer Illustrated Graphics

## Essential Level 5/6 Major Award

- 5M1995 Graphic Design

### Essential Modules/Components:

Five distinctions which must include two of the following:

- 5N1978 Graphic Design Skill
- 5N1862 Drawing
- 5N0784 Design Skills

## Essential Level 5/6 Major Award

- 5M0536 Computer Systems and Networks

### Essential Modules/Components:

Five distinctions which must include two of the following:

- 5N0548 Computer Systems Hardware
- 5N2929 Networking Essentials
- 5N2928 Operating Systems
- 5N0554 Computational Methods and Problem Solving
- 5N18396 Maths for Information Technology

## Essential Level 5/6 Major Award

- 5M2145 Motor Technology

### Essential Modules/Components:

Five distinctions which must include two of the following:

- 5N1604 Computer Aided Draughting (2D)
- 5N1606 Electronics
- 5N1607 Engineering Drawing
- 5N1608 Engineer Workshop Process
- 5N1638 Mechanics

## Essential Level 5/6 Major Award

- 5M2208 Design

### Essential Modules/Components:

Five distinctions which must include two of the following:

- 5N1862 Drawing
- 5N0784 Design Skills
- 5N1558 Architectural Drawing
- 5N1604 Computer Aided Draughting (2D)
- 5N1978 Graphic Design Skills

## Essential Level 5/6 Major Award

- 5M3807 Laboratory Techniques

### Essential Modules/Components:

Five distinctions which must include two of the following:

- 5N1460 Physics
- 5N2746 Biology
- 5N2747 Chemistry
- 5N2748 Food Chemistry



### Course

## Electronic and Computer Engineering LM118

### Specific Entry Requirements

Must possess 5 distinctions which must include at least 2 essential modules/components.

In addition students should have achieved a distinction in 5N1833 (Mathematics) OR 5N0556/5S2246 (Maths for STEM) OR have achieved an H4 in LCE Mathematics.

### Essential Level 5/6 Major Award

- 5M2061 Engineering Technology

### Essential Modules/Components:

Five distinctions which must include two of the following:

- 5N1608 Engineer Workshop Process
- 5N1638 Mechanics
- 5N1437 Control Systems
- 5N1606 Electronics
- 5N1638 Mechanics

### Essential Level 5/6 Major Award

- 5M1940 Computer Aided Design

### Essential Modules/Components:

Five distinctions which must include two of the following:

- 5N1604 Computer Aided Draughting (2D)
- 5N1558 Architectural Drawing
- 5N1929 Computer Illustrated Graphics

### Essential Level 5/6 Major Award

- 5M0529 Software Development

### Essential Modules/Components:

Five distinctions which must include two of the following:

- 5N0554 Computational Methods and Problem Solving
- 5N18396 Maths for Information Technology
- 5N2928 Operating Systems
- 5N0783 Database Methods
- 5N0580 Mobile Technologies

### Course

## Computer Science (Common Entry) LM121

### Specific Entry Requirements

Must possess 5 distinctions which must include the following essential modules/components.

In addition students should have achieved a distinction

in 5N1833 (Mathematics) OR 5N0556/5S2246 (Maths for STEM) OR 5N18396 Maths for Information Technology OR have achieved an O2/H6 in LCE Mathematics.”

### Essential Level 5/6 Major Award

- 5M1940 Computer Aided Design

### Essential Modules/Components:

No specific modules required

### Essential Level 5/6 Major Award

- 5M0536 Computer Systems and Networks

### Essential Modules/Components:

Five distinctions which must include two of the following:

- 5N0548 Computer Systems Hardware
- 5N2927 Programming and Design Principles
- 5N2929 Networking Essentials
- 5N2928 Operating Systems
- 5N0554 Computational Methods and Problem Solving
- 5N18396 Maths for Information Technology

### Essential Level 5/6 Major Award

- 5M0529 Software Development

### Essential Modules/Components:

Five distinctions which must include three of the following:

- 5N0541 Fundamentals of Object Oriented Programming
- 5N2772 Software Architecture
- 5N0783 Database Methods
- 5N2928 Operating Systems
- 5N2769 Software Testing
- 5N2927 Programming and Design Principles
- 5N0580 Mobile Technologies
- 5N1910 Web Authoring
- 5N1651 Games Analysis Design
- 5N18396 Maths for IT (Or the Leaving Certificate equivalent)

### Essential Level 5/6 Major Award

- 5M2146 Multimedia Production

### Essential Modules/Components:

Five distinctions which must include two of the following:

- 5N1300 Multimedia Project Development
- 5N1603 Computer 3D Modelling and Animation
- 5N1605 Digital Movie Processing

# QQI Pathways

- 5N1651 Games Analysis Design
- 5N1929 Computer Illustrated Graphics
- 5N1978 Graphic Design Skills

## Course

### Creative Media and Interaction Design LM122

#### Specific Entry Requirements

Must possess 5 distinctions which must include the following essential modules/components.

In addition students should have achieved a distinction in 5N1833 (Mathematics) OR 5N0556/5S2246 (Maths for STEM) OR 5N18396 Maths for Information Technology OR have achieved an O3/H7 in LCE Mathematics.

#### Essential Level 5/6 Major Award

- 5M1940 Computer Aided Design
- 5M2094 Photography

#### Essential Modules/Components:

- No specific modules required

#### Essential Level 5/6 Major Award

- 5M2146 Multimedia Production

#### Essential Modules/Components:

Five distinctions which must include three of the following:

- 5N0784 Design Skills
- 5N1299 Multimedia Authoring
- 5N1300 Multimedia Project Development
- 5N1603 Computer 3D Modelling and Animation
- 5N1605 Digital Movie Processing
- 5N1651 Games Analysis Design
- 5N1929 Computer Illustrated Graphics
- 5N1978 Graphic Design Skills

#### Essential Level 5/6 Major Award

- 5M5048 Creative Media

#### Essential Modules/Components:

Five distinctions which must include three of the following:

- 5N1651 Games Analysis Design
- 5N1929 Computer Illustrated Graphics
- 5N5029 3 Dimensional Computer Graphics
- 5N1270 Digital Photography
- 5N1438 Digital Editing

- 5N1603 Computer 3D Modelling and Animation
- 5N1978 Graphic Design Skills

#### Essential Level 5/6 Major Award

- 5M2208 Design

#### Essential Modules/Components:

Five distinctions which must include two of the following:

- 5N0784 Design Skills
- 5N1604 Computer Aided Draughting (2D)
- 5N1929 Computer Illustrated Graphics
- 5N1978 Graphic Design Skills

#### Essential Level 5/6 Major Award

- 5M2011 Music

#### Essential Modules/Components:

Five distinctions which must include two of the following:

- 5N1564 Audio Engineering
- 5N1606 Electronics
- 5N1900 Sound Engineering and Production
- 5N1978 Graphic Design Skills

## Course

### Biological and Chemical Sciences LM123

#### Specific Entry Requirements

Must possess 5 distinctions which must include the following essential modules/components.

In addition students should have achieved a distinction in 5N1833 (Mathematics) OR 5N0556/5S2246 (Maths for STEM) OR have achieved an O3/H7 in LCE Mathematics.

#### Essential Level 5/6 Major Award

- 5M3807 Laboratory Techniques

#### Essential Modules/Components:

Five distinctions which must include two of the following:

- 5N2751 Laboratory Skills
- 5N1460 Physics
- 5N2747 Chemistry
- 5N2746 Biology
- 5N0737 Microbiology
- 5N2748 Food Chemistry

#### Essential Level 5/6 Major Award

- M5267 Food Science



**Essential Modules/Components:**

Five distinctions which must include three of the following:

- 5N2751 Laboratory Skills
- 5N1460 Physics
- 5N2748 Food Chemistry
- 5N2747 Chemistry
- 5N2746 Biology
- 5N0737 Microbiology

**Essential Level 5/6 Major Award**

- 5M5028 Applied Ecology

**Essential Modules/Components:**

Five distinctions which must include the following:

- 5N2528 Plant Science
- 5N2746 Biology

**Course****Mathematics LM124****Specific Entry Requirements**

Must possess 5 distinctions which must include the following essential modules/components.

In addition students should have achieved a distinction in 5N1833/5S2246 (Mathematics) OR 5N0556 (Maths for STEM) OR have achieved an H3 in LCE Mathematics.

**Essential Level 5/6 Major Award**

- N/A

**Essential Modules/Components:**

- Any

**Course****Physics (Applied Physics or Mathematics & Physics) LM125****Specific Entry Requirements**

Must possess 5 distinctions which must include the following essential modules/components.

In addition students should have achieved a distinction in 5N1833 (Mathematics) OR 5N0556/5S2246 (Maths for STEM) OR have achieved an H4 in LCE Mathematics.

**Essential Level 5/6 Major Award**

- 5M3807 Laboratory Techniques

**Essential Modules/Components:**

Five distinctions which must include three of the following:

- 5N2751 Laboratory Skills
- 5N1460 Physics
- 5N2747 Chemistry
- 5N2746 Biology

**Essential Level 5/6 Major Award**

- 5M5267 Food Science

**Essential Modules/Components:**

Five distinctions which must include three of the following:

- 5N2751 Laboratory Skills
- 5N1460 Physics
- 5N2747 Chemistry
- 5N2746 Biology
- 5N0737 Microbiology
- 5N2748 Food Chemistry

**Essential Level 5/6 Major Award**

- 5M2061 Engineering Technology

**Essential Modules/Components:**

Five distinctions which must include two of the following:

- 5N1460 Physics
- 5N1606 Electronics
- 5N1638 Mechanics

**Course****BA in Irish Music (Audition required) LM131****Specific Entry Requirements**

Must possess 5 distinctions and pass the audition.

No specific essential modules/components are required.

**Essential Level 5/6 Major Award**

- Any

**Essential Modules/Components:**

- N/A

**Course****BA in Irish Dance (Audition required) LM132****Specific Entry Requirements**

Must possess 5 distinctions and pass the audition.

No specific essential modules/components are required.

# QQI Pathways

## Essential Level 5/6 Major Award

- Any

## Essential Modules/Components:

- N/A

## Course

### BA in Contemporary Dance (Audition required) LM133

## Specific Entry Requirements

Must possess 5 distinctions and pass the audition.

No specific essential modules/components are required.

## Essential Level 5/6 Major Award

- Any

## Essential Modules/Components:

- N/A

## Course

### BA in Voice (Audition required) LM134

## Specific Entry Requirements

Must possess 5 distinctions and pass the audition.

No specific essential modules/components are required.

## Essential Level 5/6 Major Award

- Any

## Essential Modules/Components:

- N/A

## Course

### BA in World Music (Audition required) LM135

## Specific Entry Requirements

Must possess 5 distinctions and pass the audition.

No specific essential modules/components are required.

## Essential Level 5/6 Major Award

- Any

## Essential Modules/Components:

- N/A

## Course

### General Nursing LM150

## Specific Entry Requirements

Must possess 5 distinctions which must include the following essential modules/components.

## Essential Level 5/6 Major Award

- DCHSN or 5M4349 Nursing Studies
- DCHSX or 5M4468 Community & Health Services
- DHSXX or 5M4339 Healthcare Support

## Essential Modules/Components:

Five distinctions which must include the following:

- D20001 or 5N0749 Anatomy and Physiology
- D20012 or 5N4325 Introduction to Nursing
- D20032 or 5N1279 Human Growth Development or
- C20006 or 5N2746 Biology

## Course

### Mental Health Nursing LM152

## Specific Entry Requirements

Must possess 5 distinctions which must include the following essential modules/components.

## Essential Level 5/6 Major Award

- DCHSN or 5M4349 Nursing Studies
- DCHSX or 5M4468 Community & Health Services
- DHSXX or 5M4339 Healthcare Support

## Essential Modules/Components:

Five distinctions which must include the following:

- D20001 or 5N0749 Anatomy and Physiology
- D20012 or 5N4325 Introduction to Nursing
- D20032 or 5N1279 Human Growth Development or
- C20006 or 5N2746 Biology

## Course

### Intellectual Disability Nursing LM154

## Specific Entry Requirements

Must possess 5 distinctions which must include the following essential modules/components.

## Essential Level 5/6 Major Award

- DCHSN or 5M4349 Nursing Studies
- DCHSX or 5M4468 Community & Health Services
- DHSXX or 5M4339 Healthcare Support

**Essential Modules/Components:**

Five distinctions which must include the following:

- D20001 or 5N0749 Anatomy and Physiology
- D20012 or 5N4325 Introduction to Nursing
- D20032 or 5N1279 Human Growth Development or
- C20006 or 5N2746 Biology

**Course**

**Midwifery LM156**

**Specific Entry Requirements**

Must possess 5 distinctions which must include the following essential modules/components.

**Essential Level 5/6Major Award**

- DCHSN or 5M4349 Nursing Studies
- DCHSX or 5M4468 Community & Health Services
- DHSXX or 5M4339 Healthcare Support

**Essential Modules/Components:**

Five distinctions which must include the following:

- D20001 or 5N0749 Anatomy and Physiology
- D20012 or 5N4325 Introduction to Nursing
- D20032 or 5N1279 Human Growth Development or
- C20006 or 5N2746 Biology

**Course**

**Equine Science LM180**

**Specific Entry Requirements**

Must possess 5 distinctions which must include the following essential modules/components.

In addition students should have achieved a distinction in 5N1833 (Mathematics) OR 5N0556/5S2246 (Maths for STEM) OR have achieved an F6/O6/H7 in LCE Mathematics.

**Essential Level 5/6Major Award**

- 5M3807 Laboratory Techniques

**Essential Modules/Components:**

Five distinctions to include two of the following:

- 5N2751 Laboratory Skills
- 5N2747 Chemistry
- 5N2746 Biology
- 5N0737 Microbiology
- 5N0749 Anatomy and Physiology

**Essential Level 5/6Major Award**

- 5M2768 Animal Care

**Essential Modules/Components:**

Five distinctions to include two of the following:

- 5N0750 Animal Anatomy and Physiology
- 5N0753 Animal Welfare
- 5N2746 Biology
- 5N1363 Veterinary Assisting Skills

**Essential Level 5/6Major Award**

- 5M3371 Horsemanship

**Essential Modules/Components:**

Five distinctions to include two of the following:

- 5N3359 Sport Horse Riding
- 5N3360 Equine Anatomy and Physiology
- 5N3363 Equine Nutrition
- 5N1354 Bookkeeping Manual and Computerised

**Essential Level 5/6Major Award**

- 6M5153 Animal Science

**Essential Modules/Components:**

Five distinctions to include two of the following:

- 6N5985 Veterinary Nursing Pharmacy
- 6N5926 Medical Veterinary Nursing

**Essential Level 5/6Major Award**

- 6M3507 Equine Breeding

**Essential Modules/Components:**

Five distinctions to include:

- 5N1833 Mathematics
- 5N0556 Maths for STEM
- 6M3507 / 6M3505 (or F6/O6/H7 in LCE Maths)

**Essential Level 5/6Major Award**

- 6M3505 Horsemanship

**Essential Modules/Components:**

Five distinctions to include:

- 5N1833 Mathematics
- 5N0556 Maths for STEM
- 6M3507 / 6M3505 (or F6/O6/H7 in LCE Maths)

5 Distinctions which must include a distinction in

- 5N1833 or 5N0556 (or F6/O6/H7 in LCE Maths)

# Notes

A series of horizontal dotted lines for writing notes.





[ul.ie](http://ul.ie)

[#StudyAtUL](https://twitter.com/StudyAtUL)